

**1 in 8 women**





**LIKE**

Life

Intelligence

Knowledge

Entrepreneurship

**Biomedical  
Engineering**

**Design  
Human Computer  
Interaction**



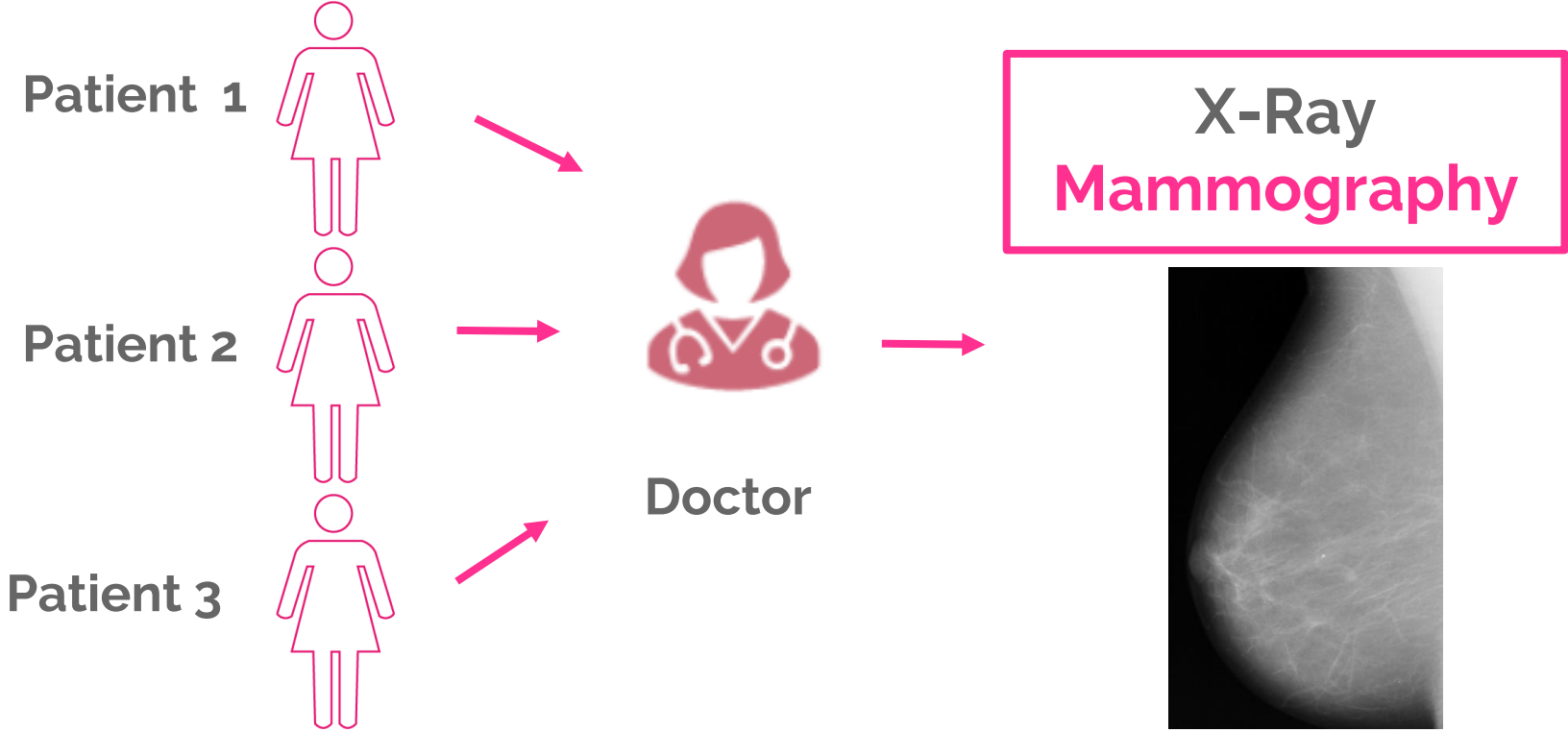
---

# INNOVATIVE MAMMOGRAPHY TOOLKIT

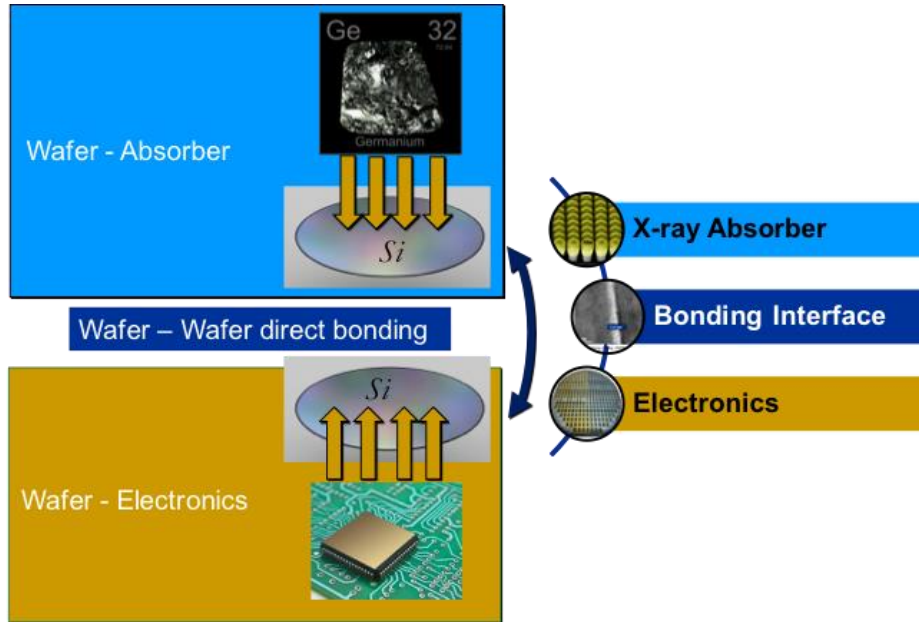


CERN MEDICAL TECHNOLOGY HACKATHON 2018

---



# G-Ray technology



Reduced health risk

Highest diagnostic quality and efficiency

Better spatial resolution and contrast ratio

Reduced radiation dose absorption

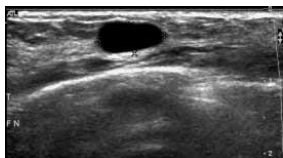
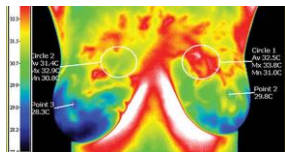
The background is a soft, abstract watercolor wash. It features a mix of pastel colors: light pink, pale yellow, and muted purple, all blended together in a textured, painterly style. The colors are most concentrated in the upper and right portions of the frame, with the word 'SOLUTION' appearing in the lower-left area.

**SOLUTION**

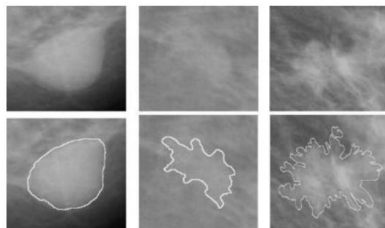
## Complementary Techniques

## Segmentation

## Selection of suspicious areas



## Personalized Mammogram



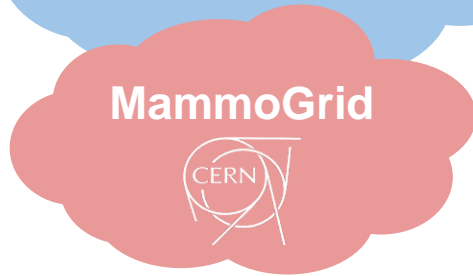
Higher quality in suspicious areas

## Data analysis

## Result









**BENEFITS**

# Benefits

**Customized  
Treatment**

**Smart  
decision  
suggestion**

**Lower  
dosage**

**Tool for  
training  
professionals**



**What we need?**

# What we need



**Medical  
expertise**



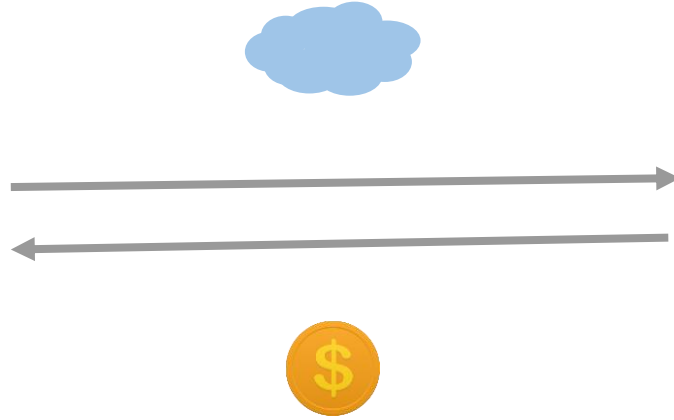
**CERN  
expert**



**Hardware  
expert**

# BUSINESS PLAN

# Business Plan



The background is a soft, textured watercolor wash. It features a mix of colors: a large area of light pink and pale yellow on the left and top, transitioning into a deep, muted purple and blue on the right and bottom. The colors are blended together, creating a dreamy, ethereal atmosphere.

**NEXT STEPS**



# Next Steps





**Lower dosage**

**Customized  
screening**

**Smart decision  
proposal**