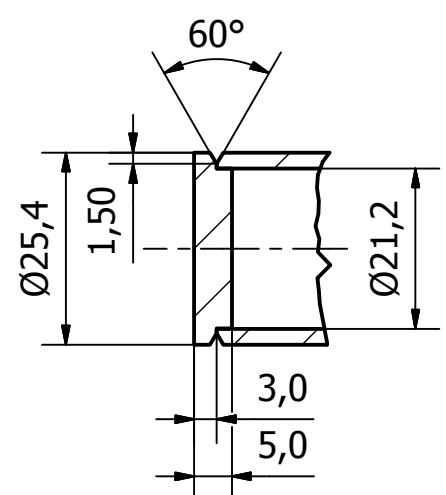
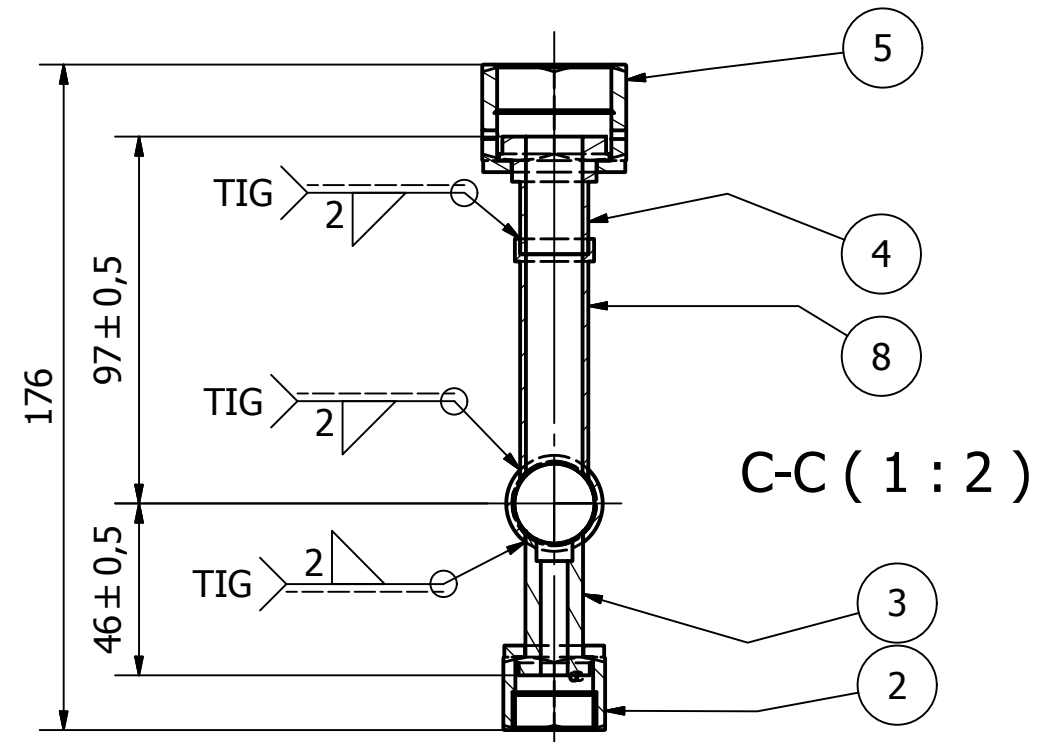


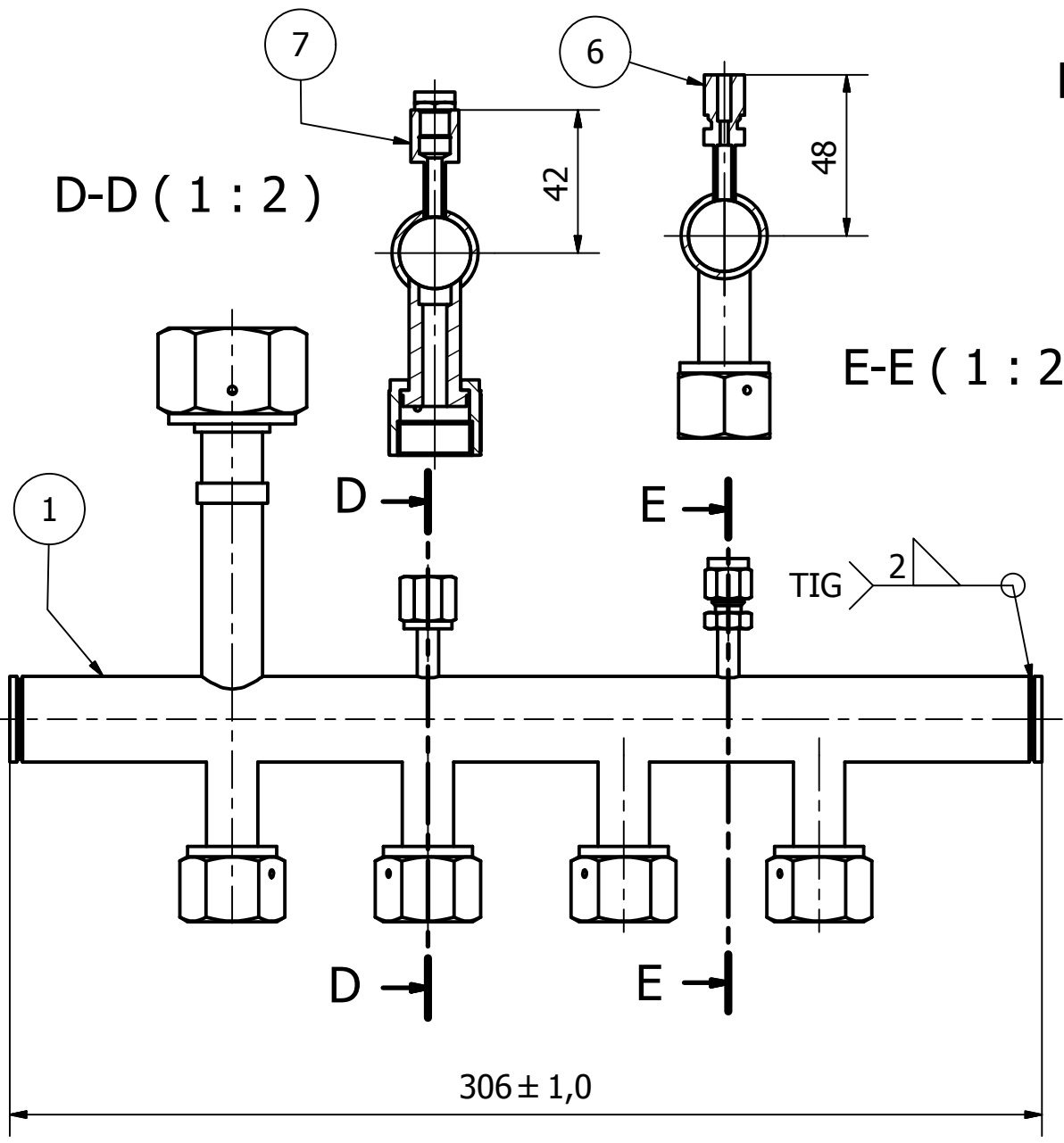
PARTS LIST			
ITEM	QTY	PART NUMBER	DESCRIPTION
1	1	SS-T16-S-083	Corpo centrale
2	4	SS-8-VCR-1	Swagelok
3	4	SS-6-VCR-3	Swagelok
4	1	6LV-12-VCR-3S-18MTB7	Swagelok
5	1	SS-12-VCR-1	Swagelok
6	1	SS--MO-R-4	Swagelok
7	1	SS-4-Ta-7-2-RP	Swagelok
8	1	Connessione_prolunga_1	AISI 316L
9	2	Disco_chiusura	AISI 316L



H (1 : 1)



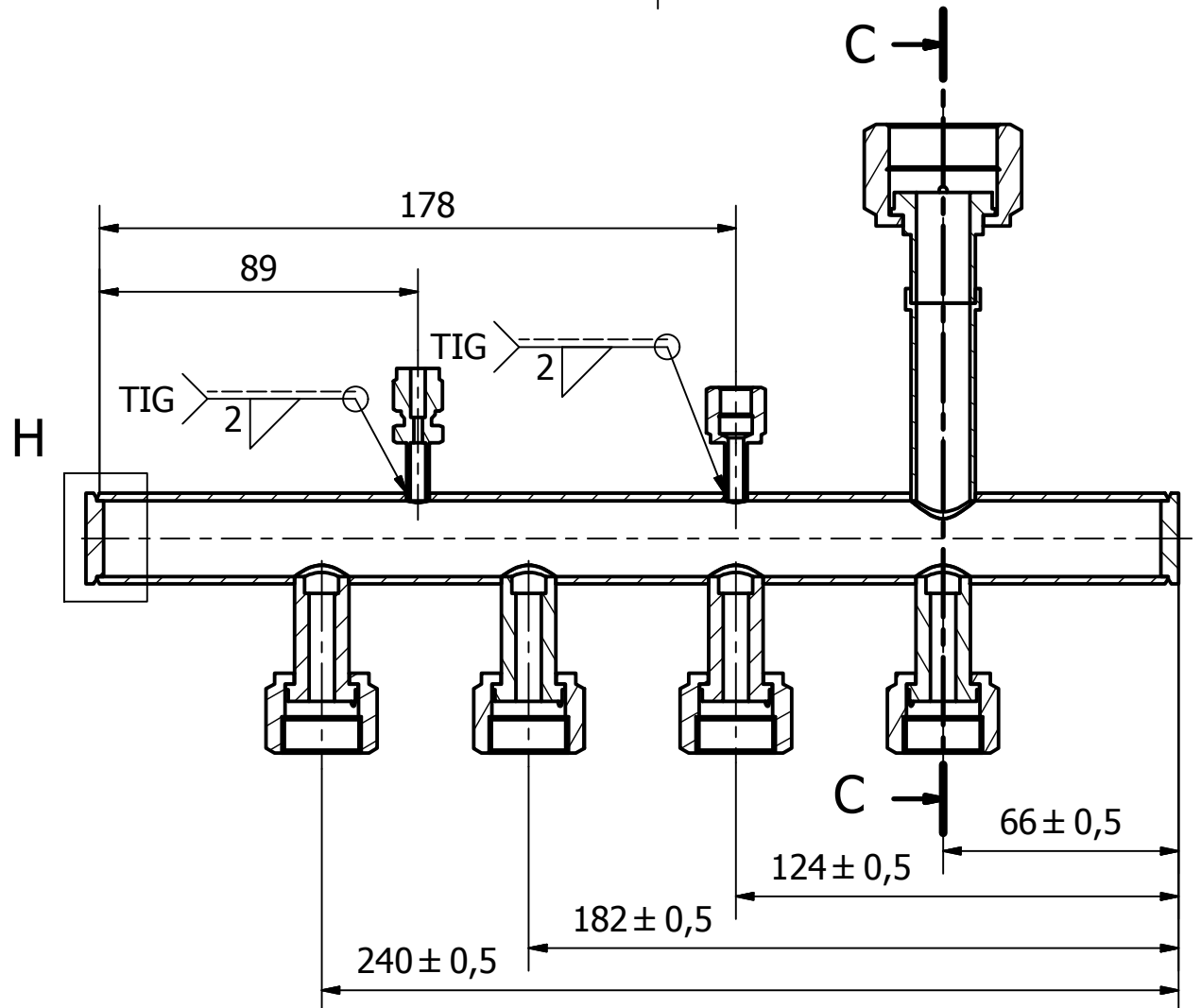
C-C (1 : 2)



D-D (1 : 2)

E-E (1 : 2)

A-A (1 : 2)



H

NOTE:  
Tested to 200 bar  
UHV standard cleaning

All components are AISI 316L  
All dimensions tolerances not indicated, are related to  
norme UNI 5307-63 - Degree of precision: medium

Designed by gesmundo	Checked by	Approved by	Date	Date 18/10/2017
Assieme collettore CO2			LHCB - CO2	
			LB_00.05.00	Edition Sheet 1 / 1