



Markus Nordberg  
Head of Resources Development  
Development and Innovation

# CERN Ideasquare

## INTRODUCTION

Porto&NTUA 8, 2018



# IDEASQUARE IN BRIEF

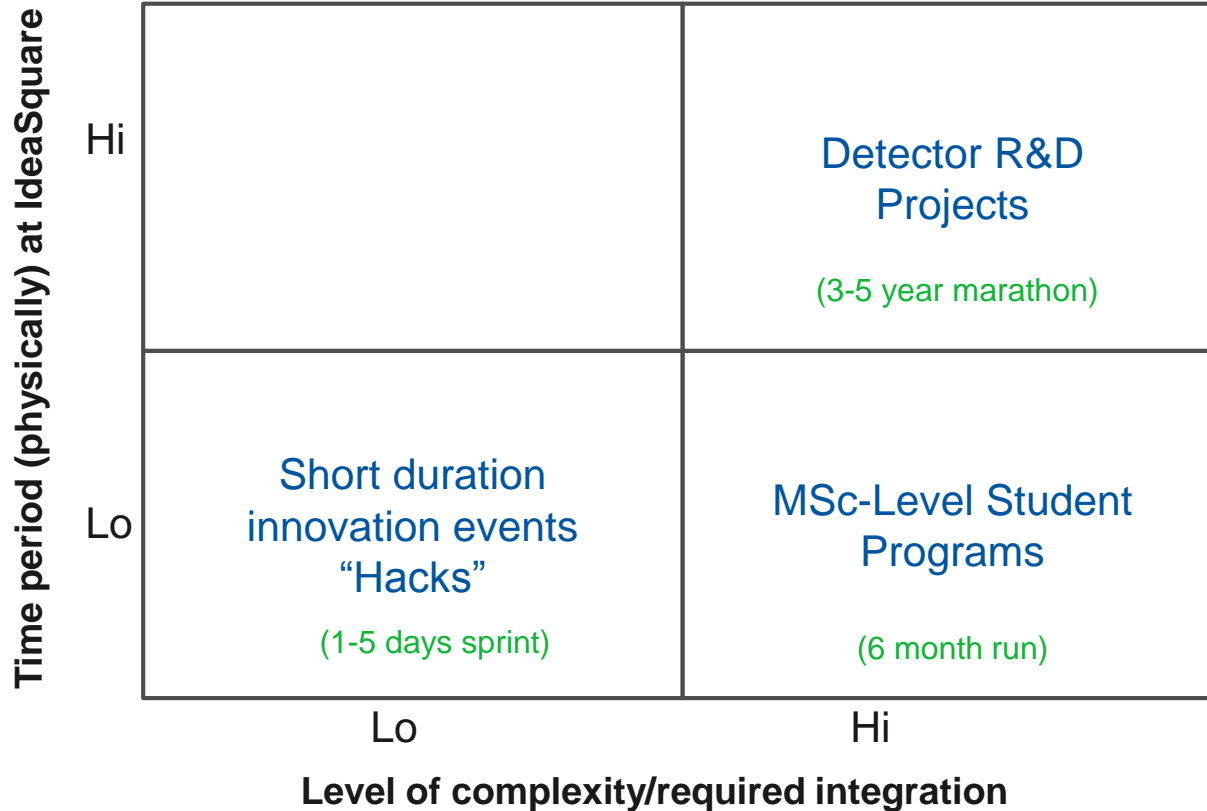
“Ideasquare is an Experiment that brings together researchers, engineers, industrial partners and cross-disciplinary student teams to work together on detector upgrade R&D technologies. The dual purpose is to co-develop new technologies for research purposes and create a fruitful environment for socially and globally relevant new product ideas and innovation.”

# IDEASQUARE IS

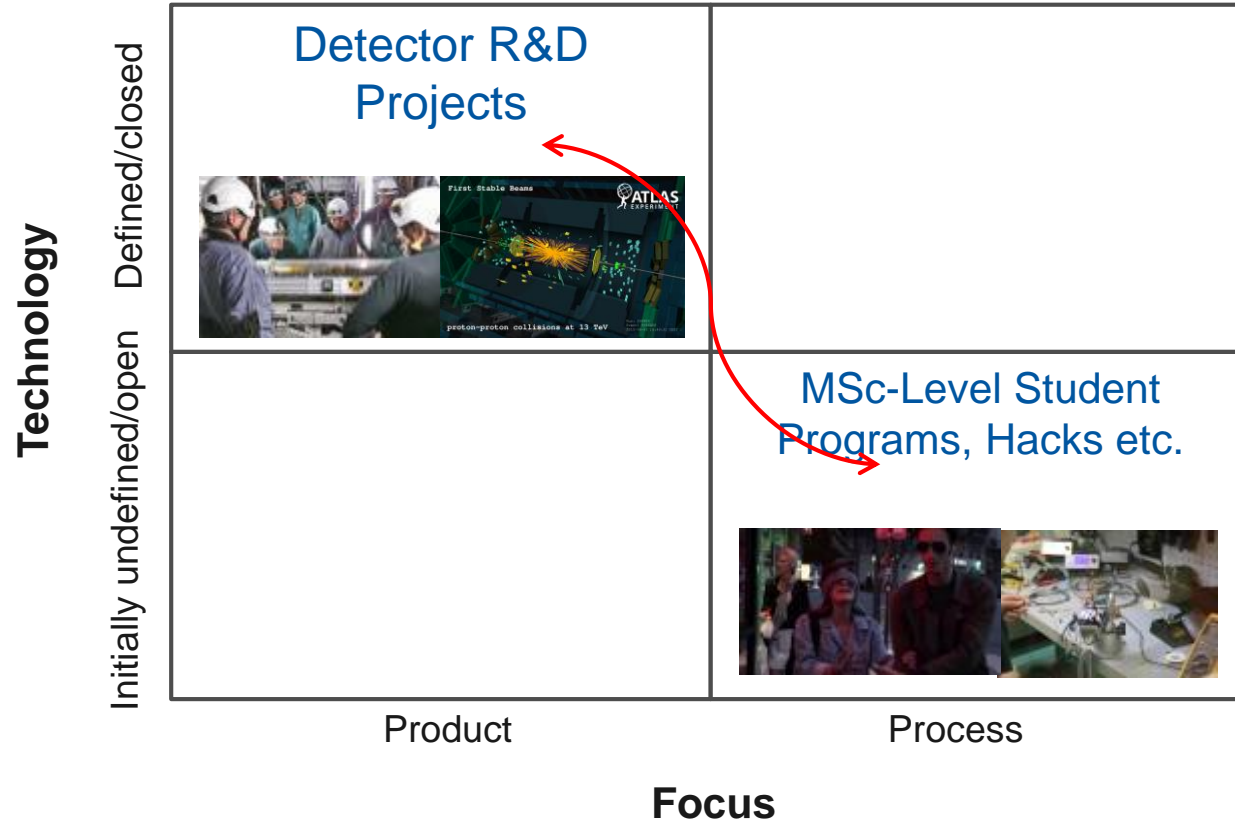
- Project with a dedicated building, hosting:
  - Detector upgrade R&D projects
  - Innovation events, workshops, hackathons
  - Multidisciplinary master level student programs
- ...to prototype, test and iterate new forms of collaboration and co-creation in the areas of Research, Education and Technology - **RET**



# HOW DO THESE PROJECTS DIFFER?



# WHAT IS THE MOST INTERESTING LINK FOR NEW INNOVATION?

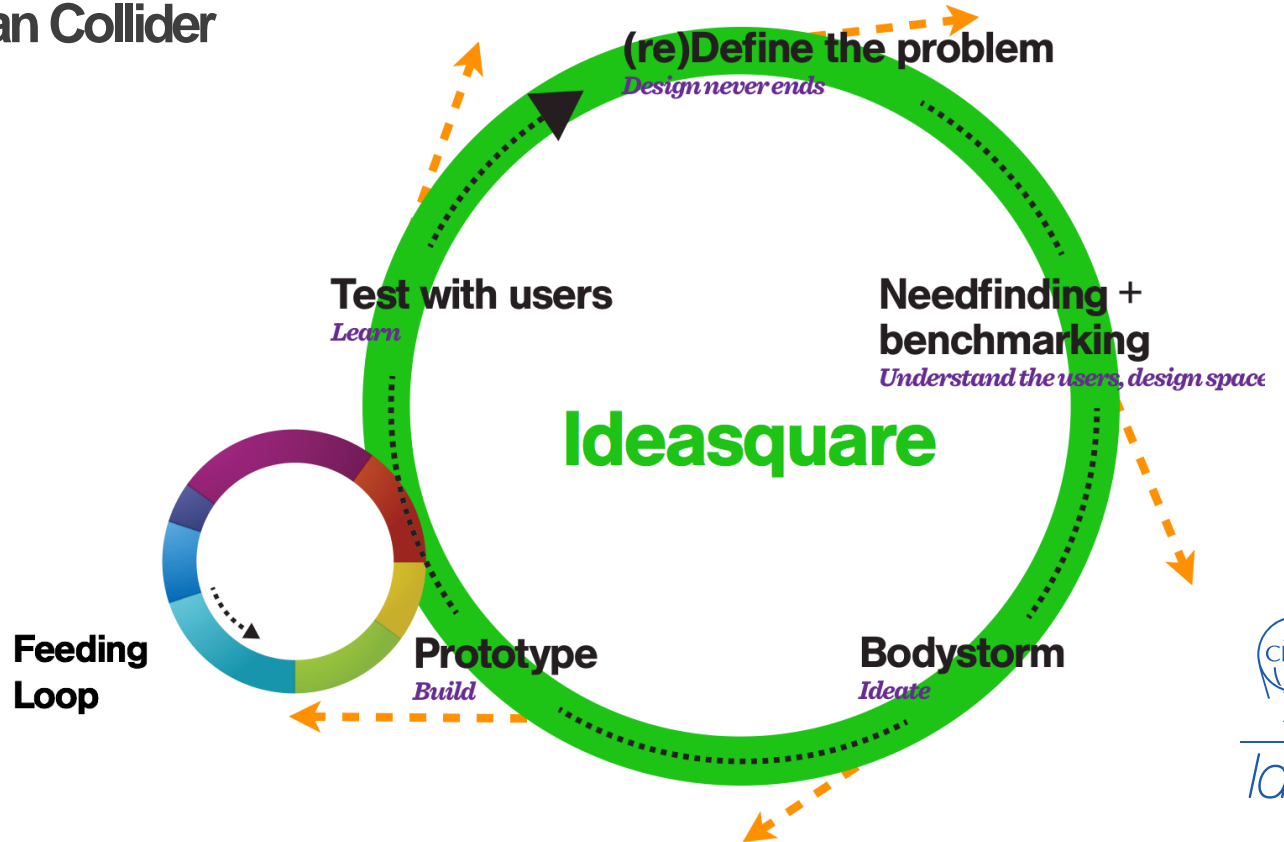


# HOW DOES IT WORK?

- Bringing different people together. Empowering them. Putting people first.
  1. Information doesn't radiate (communication deprived at 4m distance, goes to nearly zero at 20m) (TJ Allen, 1976)
  2. Single disciplinary teams do not radiate (single mindset leads thus far, but not beyond the rainbow)
- People from different backgrounds are amazed by each others skills... but only when they see them!
- Innovation is 1% about ideas, 99% execution & iteration: finding ways in which people can collaborate and co-create efficiently

# IDEASQUARE

The Large Human Collider



Idea<sup>s</sup>

# IDEASQUARE OUTPUT

- Education of future scientists and innovators
- Creating talent for *both* basic research and entrepreneurship (iterative prototyping, new business concepts)
- Sharing of ideas, spaces and resources improved in and between versatile development projects in a high-tech environment
- Societal value from basic research
- Shared experimental data on innovation processes
  - (<http://cij-ei.web.cern.ch/cij-ei/>)
- Demonstrator for ATTRACT ([www.attract-eu.org](http://www.attract-eu.org)) to create local entrepreneurial ecosystems using centers like CERN as engines of innovation (collaboration with prof. E. Autio/IC)



# BUILDING SAFETY B3179

- In all inside areas of Building 3179 smoking is strictly forbidden.
- In Point1 areas (nearby Ideasquare) alcoholic beverages are strictly forbidden.
- Working is possible 24/7 with CERN access card, sleeping is prohibited in all CERN buildings.
- Eating, drinking, coffee breaks are encouraged in the kitchen area.
- Cameras, photos, posting in social media are highly encouraged :)



**EVACUATION**

**A l'audition du signal**  
When the alarm rings

**Fermez portes et fenêtres**  
Close doors and windows

**Suivez le balisage**  
Follow the signs

**N'utilisez pas l'ascenseur**  
Do not use the lift

**Se rendre au point de rassemblement**  
Report to the assembly point



**CONSIGNE d'URGENCE / EMERGENCY PROCEDURE**

**BATIMENT 3179- Etage R / BUILDING 3179 - Floor R**



**Emergency assembly point is located next to the Point1 access gate.**



**INCENDIE/FIRE**

**112 ou 7 44 44**

**Donnez l'alarme**  
Set off the alarm

**Prévenez les autres personnes**  
Inform others

**Fermez portes et fenêtres**  
Close doors and windows

**N'utilisez pas l'ascenseur**  
Do not use the lift

**Combattez le feu**  
Start fighting the fire

**Extincteur / Fire Extinguisher**

**Alarme d'évacuation / Evacuation alarm**

**Voie d'évacuation / Escape route**

**Sortie de secours / Emergency exit**



# In case of an emergency

- If needed, press Fire Alarm (see map on next slide)
- If electric danger present, press Emergency Stop switch - located in each workshop area right next to the door
- Contact Fire Brigade, tel. 74444
- Go to the assembly point next to the Point 1 car gate, stay there until Fire Brigade gives you permission to leave.
- Notify immediately:
  - TSO Johann Poirot, [johann.poirot@cern.ch](mailto:johann.poirot@cern.ch), tel. 168883
  - Markus Nordberg, [markus.nordberg@cern.ch](mailto:markus.nordberg@cern.ch), tel. 164452

# EVACUATION

-  A l'audition du signal  
When the alarm rings
-  Fermez portes et fenêtres  
Close doors and windows
-  Suivez le balisage  
Follow the signs
-  N'utilisez pas l'ascenseur  
Do not use the lift
-  Se rendre au point de rassemblement  
Report to the assembly point

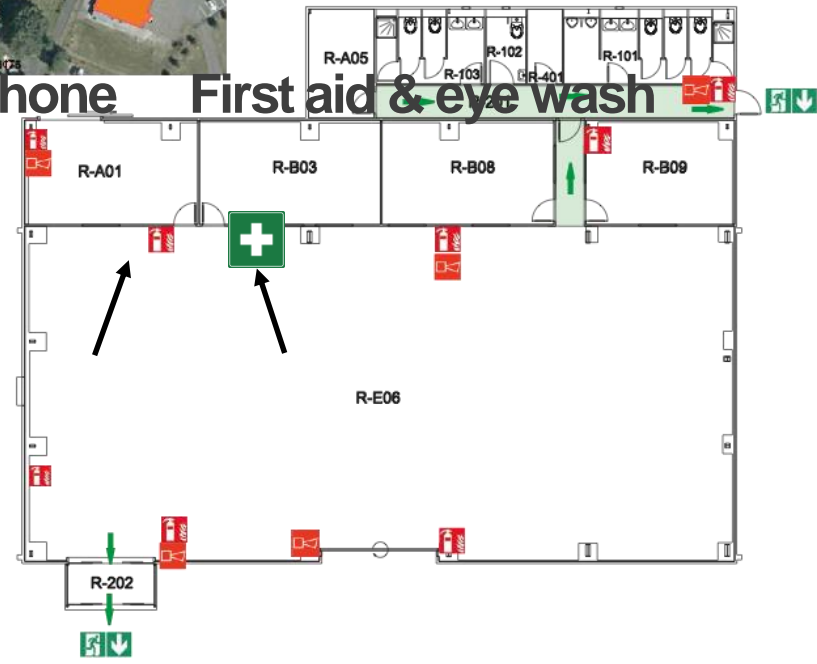


# CONSIGNE d'URGENCE / EMERGENCY PROCEDURE

## BATIMENT 3179- Etage R / BUILDING 3179 - Floor R







Phone First aid & eye wash



# INCENDIE/FIRE

-  112 ou 7 44 44
-  Donnez l'alarme  
Set off the alarm
-  Prévenez les autres personnes  
Inform others
-  Fermez portes et fenêtres  
Close doors and windows
-  N'utilisez pas l'ascenseur  
Do not use the lift
-  Combattez le feu  
Start fighting the fire

-  Extincteur / Fire Extinguisher
-  Alarme d'évacuation  
Evacuation alarm
-  Voie d'évacuation / Escape route
-  Sortie de secours  
Emergency exit

Date:11.12.2014



EDMS:1454499

# WORKING AREA POLICY B3179

- Safety is first priority!
- In laboratory areas:
  - Machinshop 3179-R-A01
  - Electroshop 3179-R-B03 and
  - 3D Studio 3179-1-D01
- eating and drinking are strictly forbidden.
- For grey room (Light Lab 3179-R-B08) and dark room (3179-R-A06) areas access is restricted to authorised personnel only.



- Free to use
- Work under supervision
- Restricted area



# Keeping places tidy

- This is a work environment, please respect our common workspace.
- For CERN ways of working, see CERN Code of Conduct.
- **Please, please:**
  - Bring all coffee cups, plates, dishes to kitchen, put them in the machine.
  - Help collaboratively to clean up the space at the end of the day.
  - Thank you!!



*All you need is*

~~..Love~~ PHYSICS

*..Design*

*..Business*

*..and Engineering.*

Questions? Comments?

Contact information:

Email

Skype

Let's have a cup of coffee and make it happen!



Idea<sup>s</sup>