

Welcome to the LHCb Online System Installer

- **Introduction**
- Destination Select
- Installation Type
- Installation
- Summary

You will be guided through the steps necessary to install this software.

Niko Neufeld
Installation Review May 2018

Go Back

Continue

Welcome to the LHCb Online System Installer

- **Introduction**
- Destination Select
- Installation Type
- Installation
- Summary

You will be guided through the steps necessary to install this software.

- Intro (this talk)
- Paolo: Subdetector commissioning & Online
- Rainer: Online commissioning
- Federico: LHCb commissioning

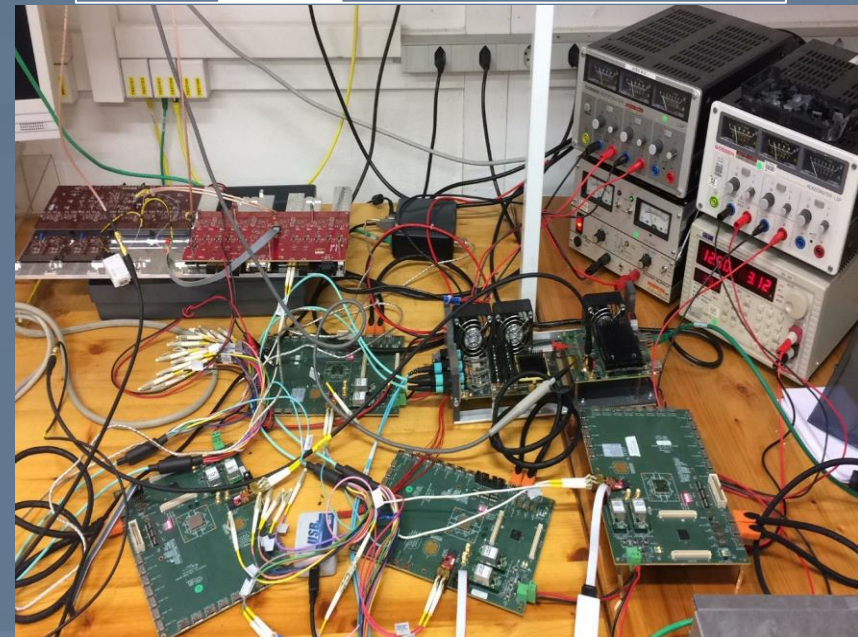
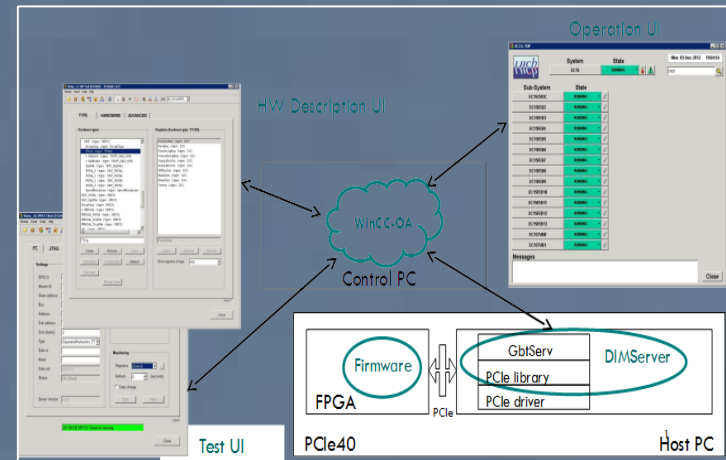
Go Back

Continue

Major mile-stones for the Online

- Modular data-centre delivered in 3 batches: Nov 2018, Mar 2019, Nov 2019
- PCIe40s available by end 2018 (about 80 pieces)
- Long distance optical fibres ready July 2019 (**tbc**)
 - SD-DAQ commissioning can start then in Sep 2019 with full connectivity for ECS, TFC and DAQ (not necessarily full band-width, but with event-building)
- Tender for event-builder (network + servers) in late 2019 / early 2020
- Tender for final farm late 2020

- Old ECS (CAN, SPECS, CreditcardPCs) will remain available as long as necessary. Physical dismantling triggered by SDs
- New ECS (GBT based) will be available in production from Sep 09 (with the long-distance cables)
 - Mobile racks (1 - 2 planned) in UX85B from 2019
- ECS for CAN/ELMB and power-supplies and other custom-slow control systems (RICH lasers, Calo rad-source) **will remain in D2 and D3**. No re-organization is foreseen as this will cause a massive amount of work, not in any plan (re-cabling!)



And in March 2021...

