

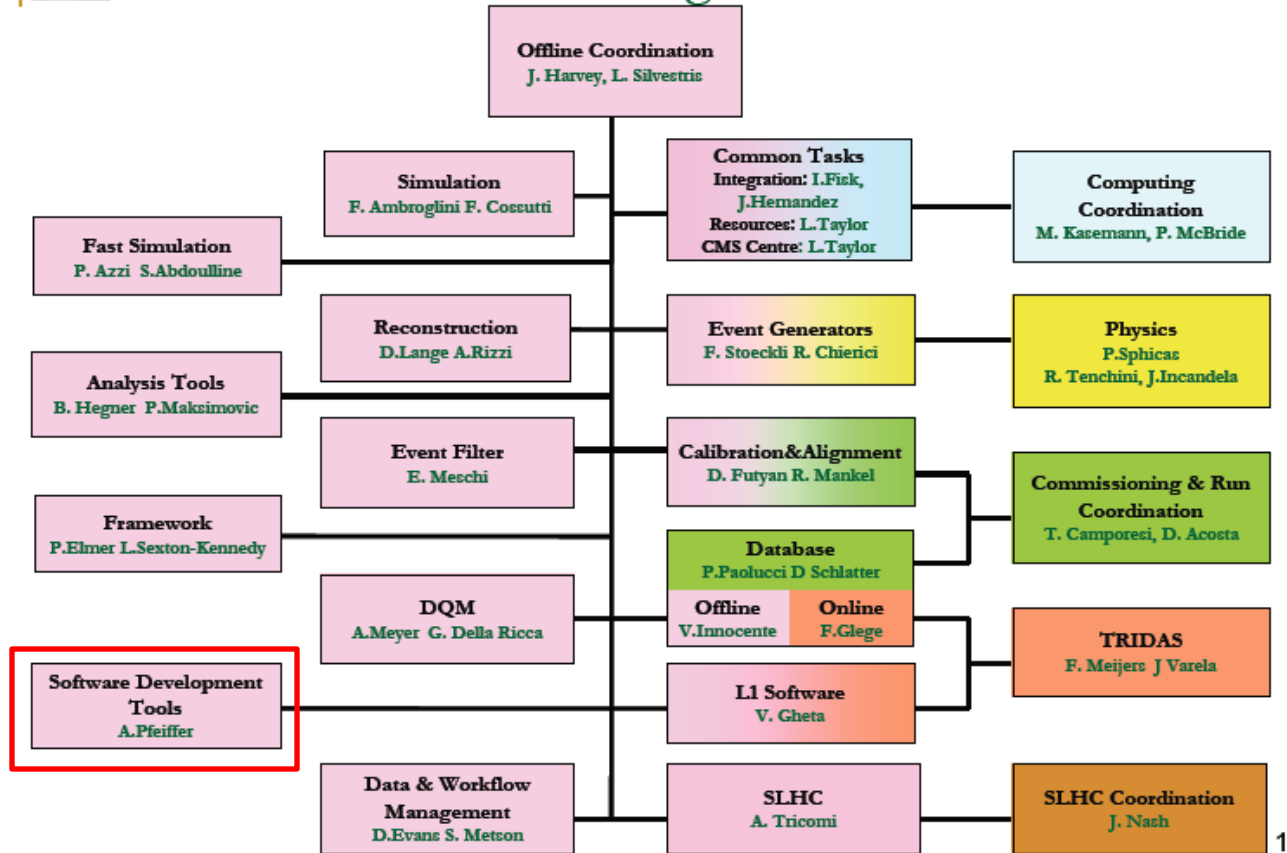


Development of Integration Build

University of Seoul
Department of Physics
Hyunyong KIM



2009 Offline Organization Chart





- CMSSW Integration Builds
 - A lots of packages.
 - Daily update.
- iCMS → offline → Development → releases → Integration Builds

Offline projects		
<p>Core Software</p> <p>FRAMEWORK</p> <ul style="list-style-type: none"> ▪ Framework and EDM Detector description <p>DATA AND WORKFLOW MANAGEMENT TOOLS</p> <ul style="list-style-type: none"> ▪ Data Management ▪ BOSS CRAB Dashboard DBS DLS Frontier JobRobot PhEDEx ProdAgent <p>HLT AND DQM FRAMEWORK</p> <ul style="list-style-type: none"> ▪ Event filter Online Selection Data Quality Monitoring 	<p>Physics Software</p> <p>SIMULATION</p> <ul style="list-style-type: none"> ▪ Generators Full simulation (G4) Fast simulation <p>L1 SOFTWARE</p> <ul style="list-style-type: none"> ▪ L1 software <p>CALIBRATION AND ALIGNMENT</p> <ul style="list-style-type: none"> ▪ Calibration / Alignment <p>RECONSTRUCTION</p> <ul style="list-style-type: none"> ▪ Reconstruction <p>ANALYSIS TOOLS</p> <ul style="list-style-type: none"> ▪ Physics Tools ▪ IGUANA Visualization 	<p>Development</p> <p>TOOLS AND INFRASTRUCTURE</p> <ul style="list-style-type: none"> ▪ Tools task ▪ SCRAM Tag collector Ignominy ▪ CERN cvs help cvs browser ▪ doxygen LXR ▪ Code rules <p>RELEASES</p> <ul style="list-style-type: none"> ▪ Releases Release policy ▪ Installation Distribution policy ▪ <u>Integration builds</u>



CMSSW integration builds

This page shows the build results for the CMSSW Integration Builds (formerly known as 'nightly').

Hovering with the mouse over a link for the build or relval will show up a tooltip summarising the info. The tooltip will go away after 5 sec, or if you click on the "close" button (top right).

As there are usually three RelVals which run into a timeout, the threshold for "green" RelVals is three.

NOTE: As of Mon, Sep 14, 18:00 the Python errors are gone in the 3.3 cycle, so we flag builds as "failed" if there are any python errors. This applies to 3.3.X and above (3.1 and 3.2 cycles are not affected).

Status of the builds

Release cycle 3.1 -- [back to top of page](#)

day	IB	builds	PyRelVals	Q/A page
mon	CMSSW_3_1_X_2009-09-21-1900	slc4_ia32_gcc345	16 RVs failed', CLOSEBTN, true, FOLLOWMOUSE, false, DURATION, 5000)" > slc4_ia32_gcc345 217 RVs passed	Q/A info
tue	CMSSW_3_1_X_2009-09-22-0900	slc4_ia32_gcc345	3 RVs failed', CLOSEBTN, true, FOLLOWMOUSE, false, DURATION, 5000)" > slc4_ia32_gcc345 230 RVs passed	Q/A info
tue	CMSSW_3_1_X_2009-09-22-2000	slc4_ia32_gcc345	3 RVs failed', CLOSEBTN, true, FOLLOWMOUSE, false, DURATION, 5000)" > slc4_ia32_gcc345 230 RVs passed	Q/A info
wed	CMSSW_3_1_X_2009-09-23-1900	slc4_ia32_gcc345	3 RVs failed', CLOSEBTN, true, FOLLOWMOUSE, false, DURATION, 5000)" > slc4_ia32_gcc345 230 RVs passed	Q/A info
fri	CMSSW_3_1_X_2009-09-18-1200	slc4_ia32_gcc345	3 RVs failed', CLOSEBTN, true, FOLLOWMOUSE, false, DURATION, 5000)" > slc4_ia32_gcc345 230 RVs passed	Q/A info
sat	CMSSW_3_1_X_2009-09-19-1200	slc4_ia32_gcc345	3 RVs failed', CLOSEBTN, true, FOLLOWMOUSE, false, DURATION, 5000)" > slc4_ia32_gcc345 230 RVs passed	Q/A info
sun	CMSSW_3_1_X_2009-09-20-0900	slc4_ia32_gcc345	84 RVs failed', CLOSEBTN, true, FOLLOWMOUSE, false, DURATION, 5000)" > slc4_ia32_gcc345 0 RVs passed	Q/A info
sun	CMSSW_3_1_X_2009-09-20-1900	slc4_ia32_gcc345	16 RVs failed', CLOSEBTN, true, FOLLOWMOUSE, false, DURATION, 5000)" > slc4_ia32_gcc345 217 RVs passed	Q/A info

passed warning error



- <http://www.cms-kr.org/twiki/bin/view/Computing/IBQA>
- New interface added (Package Dependency)
 - Dropdown menu for the text information
- Histogram for the text information
 - Timing, Memory, FileSize information
 - Log file for checking Python Configuration files



```

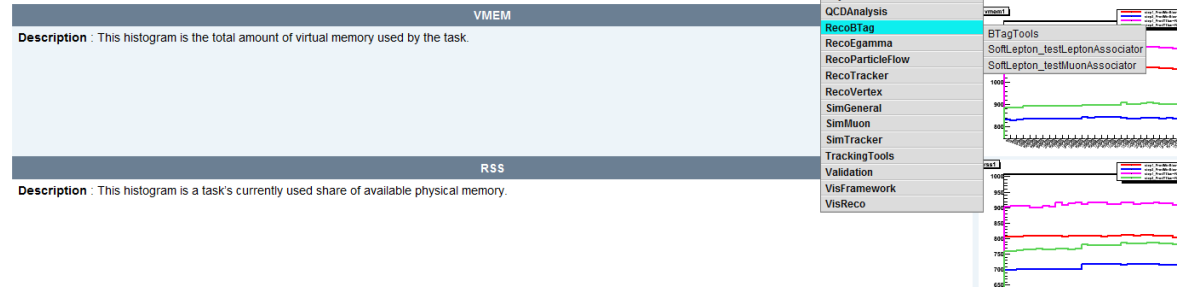
34. Alignment/CommonAlignmentProducer/plugins
Alignment/CommonAlignmentProducer/CommonAlignmentProducerSelectors
Alignment/MuonAlignment/test
Alignment/MuonAlignment_AlignmentMuonAlignment_test
Alignment/MuonAlignment_MisalignedMuonProducer
Alignment/MuonAlignment_MuonGeometryArrange
Alignment/MuonAlignment_MuonGeometryDBconverter
Alignment/SurveyAnalysis
Alignment/TrackHitFilter
Alignment/TrackerAlignment/plugins
Alignment/TrackerAlignment/test
Alignment/TrackerAlignment_AlignmentTrackerAlignmentPlugin
Alignment/TrackerAlignment_AlignmentTrackerAlignment_test
CalibTracker/SIPixelErrorEstimation
CalibTracker/SIPixelLorentzAngle
DDMSiStripCommissioningSources/plugins/tracking
DDMSiStripCommissioningSources_plugins/trackingSourcesTracking
DDMTrackingMonitor
DataFormats/RoadSearchSeed
EventFilter/Cosmics
FastSimulation/MaterialEffects
FastSimulation/ParticleDecay
FastSimulation/ParticlePropagator/plugins
FastSimulation/ParticlePropagator_FastSimulationParticlePropagatorPlugin
FastSimulation/Tracking_testTrackingIterations
PhysicsTools/PatUtils
QCDAnalysis/ChargedHadronSpectra/test
RecoBTag/BTagTools
RecoBTag/SoftLepton_testLeptonAssociator
RecoBTag/SoftLepton_testMuonAssociator
RecoEgamma/PhotonIdentification/plugins
RecoEgamma/PhotonIdentification_RecoEgammaPhotonIdentificationPlugins
RecoParticleFlowPTTracking_RecoParticleFlowPTTrackingPlugins
RecoTracker/MeasurementDet
RecoTracker/RoadMapESource
RecoTracker/RoadMapESource/test
RecoTracker/RoadMapESource_RoadPainter
RecoTracker/RoadMakerESProducer
RecoTracker/RoadMapRecord/test
    
```

• Metrics ALL (Please, Mouse over)

1 2 3 4 5 6 7 8 9 10 11 12 13 14 15 16 17 18 19 20 21 22 23 24 25 26 27 28 29 30 31 32 33 34 35 36 37 38 39 40 41 42

Timing/Memory/FileSize information

- Using the timing/memory services on the Production MinBias and TBar ReIvals (1 and 2 in cmsDriver_standard_hit.txt). File size as reported by
- Timing/Memory result (Click : Large, DoubleClick : Small)





Timing



step1_ProdMinBias+RECOPROD1

release	nevt	vmem.
CMSSW_3_3_X_2009-09-04-0200	99	1059.84
CMSSW_3_3_X_2009-09-04-1300	99	1062.81
CMSSW_3_3_X_2009-09-05-0100	99	1064.71
CMSSW_3_3_X_2009-09-05-1300	99	1064.89
CMSSW_3_3_X_2009-09-06-1600	99	1062.96
CMSSW_3_3_X_2009-09-07-1300	99	1062.87
CMSSW_3_3_X_2009-09-08-0100	99	1065.15
CMSSW_3_3_X_2009-09-08-1300	99	1064.87
CMSSW_3_3_X_2009-09-09-0100	99	1065.23
CMSSW_3_3_X_2009-09-09-1300	99	1064.91
CMSSW_3_3_X_2009-09-10-0100	99	1064.38
CMSSW_3_3_X_2009-09-10-1700	99	1064.69
CMSSW_3_3_X_2009-09-12-0100	99	1064.44
CMSSW_3_3_X_2009-09-12-1700	99	1064.61
CMSSW_3_3_X_2009-09-13-1700	99	1064.88
CMSSW_3_3_X_2009-09-14-1300	99	1064.44
CMSSW_3_3_X_2009-09-15-0100	99	1064.43
CMSSW_3_3_X_2009-09-15-1300	99	1065.04
CMSSW_3_3_X_2009-09-16-0100	99	1064.61
CMSSW_3_3_X_2009-09-16-1500	99	1065.09
CMSSW_3_3_X_2009-09-17-0100	99	1065.04
CMSSW_3_3_X_2009-09-17-1700	99	1065.75
CMSSW_3_3_X_2009-09-18-0100	99	1061.87
CMSSW_3_3_X_2009-09-18-1400	99	1061.87
CMSSW_3_3_X_2009-09-19-0100	99	1057.52
CMSSW_3_3_X_2009-09-19-1300	99	1057.72
CMSSW_3_3_X_2009-09-20-0100	99	1057.66
CMSSW_3_3_X_2009-09-20-1100	99	1057.70
CMSSW_3_3_X_2009-09-21-0100	99	1057.96
CMSSW_3_3_X_2009-09-22-0100	99	1057.98
CMSSW_3_3_X_2009-09-23-0100	99	1065.02
CMSSW_3_3_X_2009-09-23-1300	99	1065.02

step2_ProdMinBias+RECOPROD1

release	nevt	vmem.
CMSSW_3_3_X_2009-09-04-0200	99	832.62
CMSSW_3_3_X_2009-09-04-1300	99	833.82
CMSSW_3_3_X_2009-09-05-0100	99	833.62
CMSSW_3_3_X_2009-09-05-1300	99	833.76
CMSSW_3_3_X_2009-09-06-1600	99	834.36
CMSSW_3_3_X_2009-09-07-1300	99	833.91
CMSSW_3_3_X_2009-09-08-0100	99	833.91
CMSSW_3_3_X_2009-09-08-1300	99	834.11
CMSSW_3_3_X_2009-09-09-0100	99	834.73
CMSSW_3_3_X_2009-09-09-1300	99	833.59
CMSSW_3_3_X_2009-09-10-0100	99	841.11
CMSSW_3_3_X_2009-09-10-1700	99	838.04
CMSSW_3_3_X_2009-09-12-0100	99	841.19
CMSSW_3_3_X_2009-09-12-1700	99	841.19
CMSSW_3_3_X_2009-09-13-1700	99	841.46
CMSSW_3_3_X_2009-09-14-1300	99	841.13
CMSSW_3_3_X_2009-09-15-0100	99	839.63
CMSSW_3_3_X_2009-09-15-1300	99	836.58
CMSSW_3_3_X_2009-09-16-0100	99	836.62
CMSSW_3_3_X_2009-09-16-1500	99	837.11
CMSSW_3_3_X_2009-09-17-0100	99	839.87
CMSSW_3_3_X_2009-09-17-1700	99	837.09
CMSSW_3_3_X_2009-09-18-0100	99	833.43
CMSSW_3_3_X_2009-09-18-1400	99	837.44
CMSSW_3_3_X_2009-09-19-0100	99	835.99
CMSSW_3_3_X_2009-09-19-1300	99	833.35
CMSSW_3_3_X_2009-09-20-0100	99	837.02
CMSSW_3_3_X_2009-09-20-1100	99	837.61
CMSSW_3_3_X_2009-09-21-0100	99	836.63
CMSSW_3_3_X_2009-09-22-0100	99	836.03
CMSSW_3_3_X_2009-09-23-0100	99	839.19
CMSSW_3_3_X_2009-09-23-1300	99	837.38

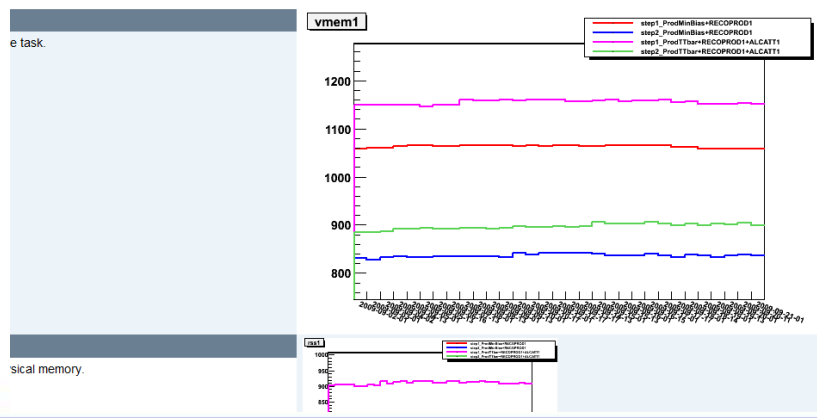
step1_ProdTTbar+RECOPROD1+ALCATT1

release	nevt	vmem.
CMSSW_3_3_X_2009-09-04-0200	99	1150.08
CMSSW_3_3_X_2009-09-04-1300	99	1150.14
CMSSW_3_3_X_2009-09-05-0100	99	1148.55
CMSSW_3_3_X_2009-09-05-1300	99	1146.42
CMSSW_3_3_X_2009-09-06-1600	99	1150.27
CMSSW_3_3_X_2009-09-07-1300	99	1149.20
CMSSW_3_3_X_2009-09-08-0100	99	1160.87
CMSSW_3_3_X_2009-09-08-1300	99	1157.59
CMSSW_3_3_X_2009-09-09-0100	99	1158.31
CMSSW_3_3_X_2009-09-09-1300	99	1160.12
CMSSW_3_3_X_2009-09-10-0100	99	1158.03
CMSSW_3_3_X_2009-09-10-1700	99	1160.54
CMSSW_3_3_X_2009-09-12-0100	99	1159.51
CMSSW_3_3_X_2009-09-12-1700	99	1159.51
CMSSW_3_3_X_2009-09-13-1700	99	1156.50
CMSSW_3_3_X_2009-09-14-1300	99	1156.74
CMSSW_3_3_X_2009-09-15-0100	99	1158.86
CMSSW_3_3_X_2009-09-15-1300	99	1159.44
CMSSW_3_3_X_2009-09-16-0100	99	1156.34
CMSSW_3_3_X_2009-09-16-1500	99	1158.75
CMSSW_3_3_X_2009-09-17-0100	99	1158.16
CMSSW_3_3_X_2009-09-17-1700	99	1159.40
CMSSW_3_3_X_2009-09-18-0100	99	1155.61
CMSSW_3_3_X_2009-09-18-1400	99	1156.10
CMSSW_3_3_X_2009-09-19-0100	99	1151.23
CMSSW_3_3_X_2009-09-19-1300	99	1151.39
CMSSW_3_3_X_2009-09-20-0100	99	1151.24
CMSSW_3_3_X_2009-09-20-1100	99	1153.40
CMSSW_3_3_X_2009-09-21-0100	99	1151.65
CMSSW_3_3_X_2009-09-22-0100	99	1151.73
CMSSW_3_3_X_2009-09-23-0100	99	1155.96
CMSSW_3_3_X_2009-09-23-1300	99	1157.86

step2_ProdTTbar+RECOPROD1+ALCATT1

release	nevt	vmem.
CMSSW_3_3_X_2009-09-04-0200	99	865.97
CMSSW_3_3_X_2009-09-04-1300	99	892.08
CMSSW_3_3_X_2009-09-05-0100	99	892.04
CMSSW_3_3_X_2009-09-05-1300	99	893.38
CMSSW_3_3_X_2009-09-06-1600	99	891.16
CMSSW_3_3_X_2009-09-07-1300	99	891.78
CMSSW_3_3_X_2009-09-08-0100	99	893.93
CMSSW_3_3_X_2009-09-08-1300	99	893.64
CMSSW_3_3_X_2009-09-09-0100	99	892.23
CMSSW_3_3_X_2009-09-09-1300	99	893.64
CMSSW_3_3_X_2009-09-10-0100	99	897.48
CMSSW_3_3_X_2009-09-10-1700	99	895.34
CMSSW_3_3_X_2009-09-12-0100	99	895.67
CMSSW_3_3_X_2009-09-12-1700	99	896.60
CMSSW_3_3_X_2009-09-13-1700	99	896.07
CMSSW_3_3_X_2009-09-14-1300	99	896.67
CMSSW_3_3_X_2009-09-15-0100	99	906.88
CMSSW_3_3_X_2009-09-15-1300	99	902.16
CMSSW_3_3_X_2009-09-16-0100	99	902.18
CMSSW_3_3_X_2009-09-16-1500	99	902.73
CMSSW_3_3_X_2009-09-17-0100	99	907.04
CMSSW_3_3_X_2009-09-17-1700	99	903.18
CMSSW_3_3_X_2009-09-18-0100	99	899.53
CMSSW_3_3_X_2009-09-18-1400	99	902.34
CMSSW_3_3_X_2009-09-19-0100	99	898.67
CMSSW_3_3_X_2009-09-19-1300	99	903.14
CMSSW_3_3_X_2009-09-20-0100	99	901.43
CMSSW_3_3_X_2009-09-20-1100	99	903.70
CMSSW_3_3_X_2009-09-21-0100	99	899.54
CMSSW_3_3_X_2009-09-22-0100	99	903.88
CMSSW_3_3_X_2009-09-23-0100	99	891.00
CMSSW_3_3_X_2009-09-23-1300	99	890.89

RelVals (1 and 2 in cmsDriver_standard_hit.txt). File size as reported by operating system.





```
Package: DOM_HcalMonitorModule
missing file : DOM/HcalMonitorModule/python/Hcal_FrontierConditions_GRUIMM_cff.py
missing file : DOM/HcalMonitorModule/python/Hcal_FrontierConditions_GRUIMM_ORCON_cff.py
missing file : DOM/HcalMonitorModule/python/Hcal_FrontierConditions_GREEN_cff.py
missing file : DOM/HcalMonitorModule/python/LumiblockFilter_cfi.py
missing file : DOM/HcalMonitorModule/python/HcalMonitorModule_live_cfi.py
missing file : DOM/HcalMonitorModule/python/Hcal_FrontierConditions_cff.py
missing file : DOM/HcalMonitorModule/python/Hcal_FrontierConditions_GREEN_ORCON_cff.py
```

```
Package: EventFilter_CSCRawToDigi
update needed : EventFilter/CSCRawToDigi/python/cscPacker_cfi.py
```

```
Package: GeneratorInterface_CosmicMuonGenerator
missing file : GeneratorInterface/CosmicMuonGenerator/python/CMSCGENproduce_cfi.py
```

```
Package: Validation_Generator
missing file : Validation/Generator/python/analyze_cfi.py
missing file : Validation/Generator/python/Zmjj_MadGraph__1_8_4_orig_cfi.py
missing file : Validation/Generator/python/Higgs_herwig_cfi.py
missing file : Validation/Generator/python/Zmjj_MadGraph__1_8_4_new_cfi.py
missing file : Validation/Generator/python/Higgs_pythia6_cfi.py
```

```
Package: Validation_RecoJets
missing file : Validation/RecoJets/python/PartonClosure_cfi.py
missing file : Validation/RecoJets/python/calibrationMono_cff.py
missing file : Validation/RecoJets/python/PartonClosure_icone5_cff.py
missing file : Validation/RecoJets/python/CompareCalibs_cfi.py
missing file : Validation/RecoJets/python/CompareCalibs_icone5_cff.py
missing file : Validation/RecoJets/python/GenJetClosure_icone5_cff.py
missing file : Validation/RecoJets/python/GenJetClosure_cfi.py
missing file : Validation/RecoJets/python/CompareCalibs_cff.py
missing file : Validation/RecoJets/python/calibrationFact_cff.py
```

Found a total of 5 problematic packages and 23 files.

Log file for checking Python Configuration files

- Log file for checking Python Configuration files pyCfgCheck

