

# BGC CERN Update

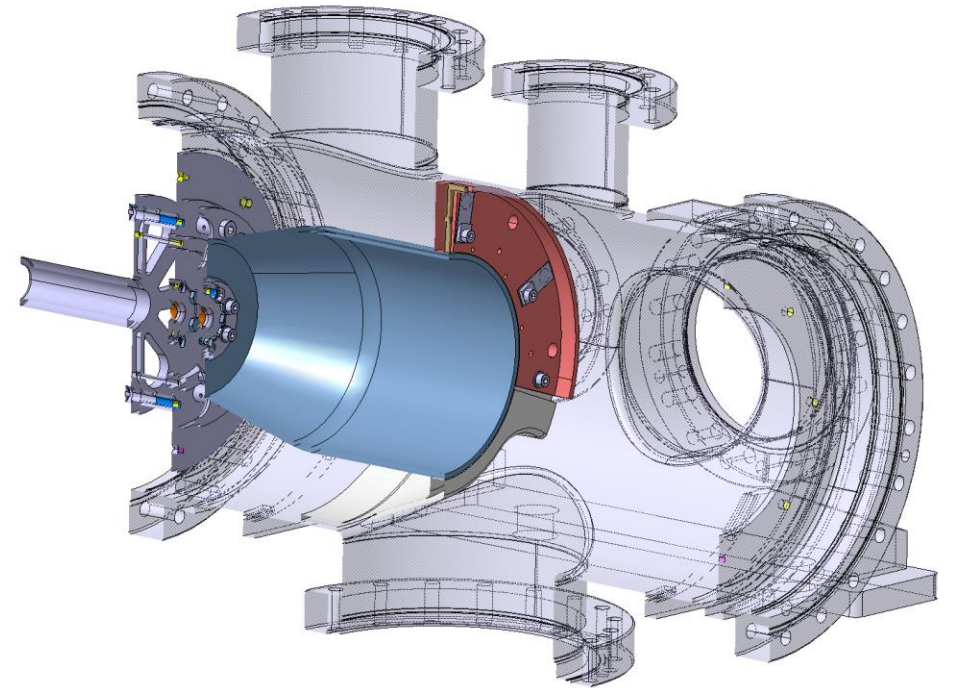
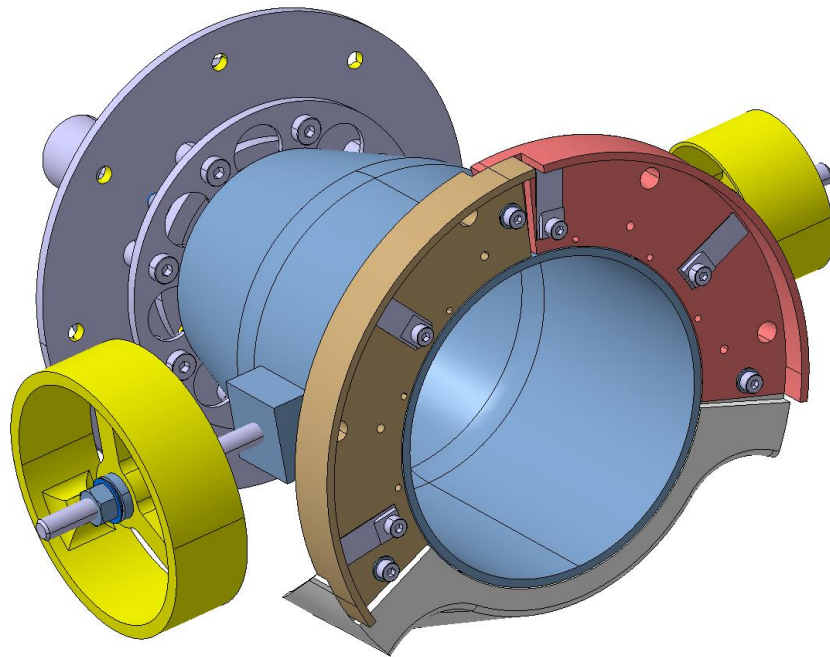
Tom Dodington, BE-BI-ML

19.01.2017

# Gas Volume Partition

Idea to separate pumping between skimmer 1 & 2  
Secondary design now complete by CERN Design Office

*ST0923983\_01*



*Candy Capelli, EN-MME*

# Optical Holder

Addressed issues discussed with Serban  
Drawings complete, need final signatures

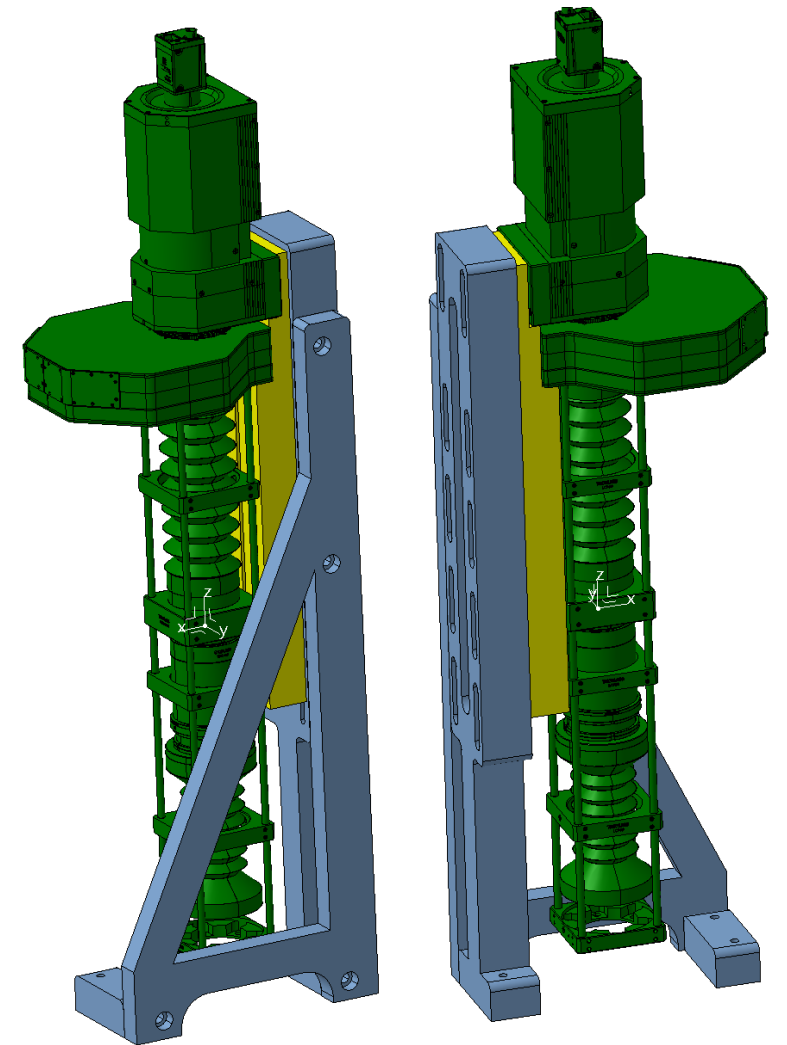
Available now:

[Optical Support](#)

[Optical Gantry A](#)

[Optical Gantry B](#)

[Optical Gantry C](#)



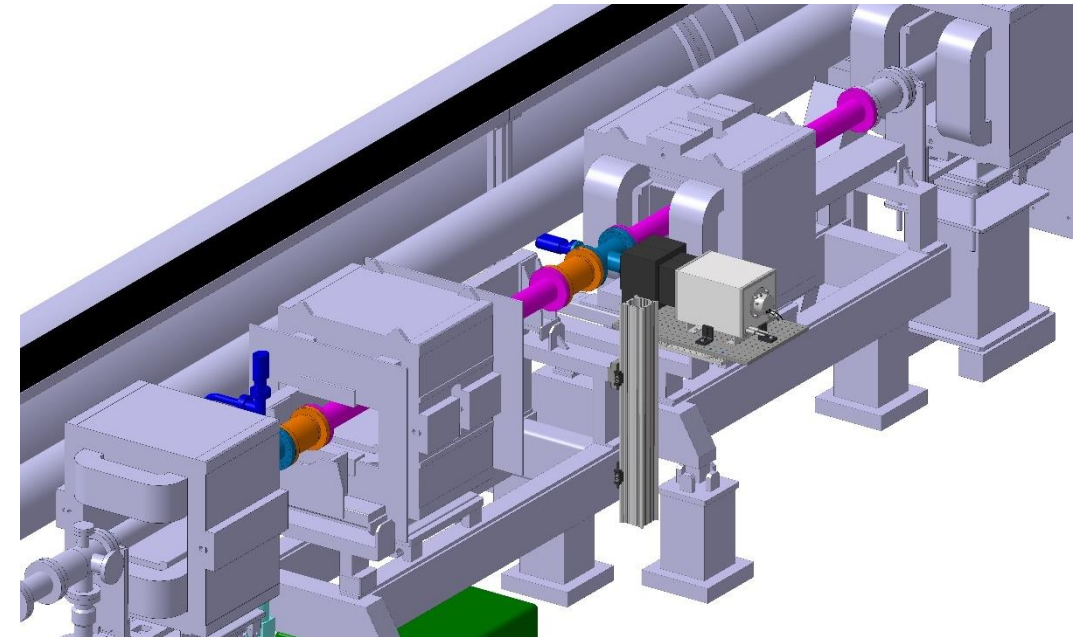
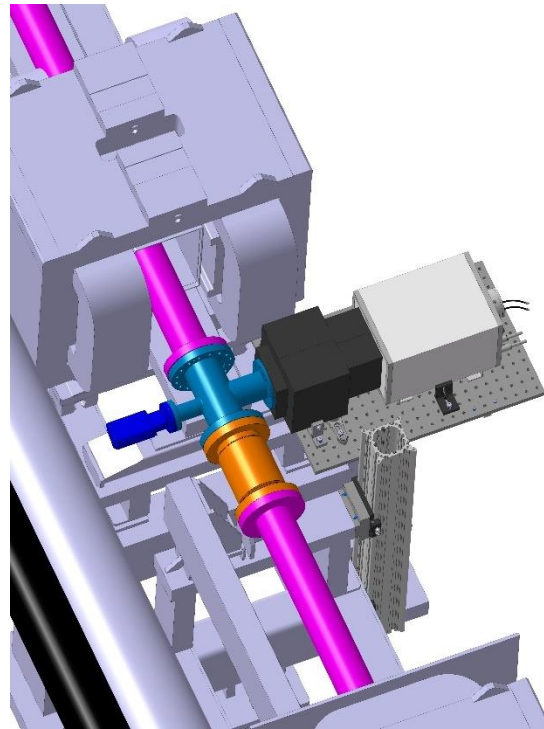
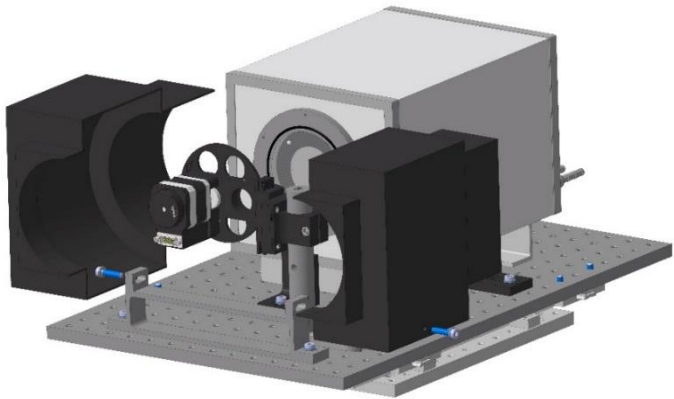
ST0916376\_01

# Fluorescence Monitor Optics

BI-ML colleague, Alexandre Mariet, has made design for optics installation.

- Photon Counter, Filter Wheels, light shield, mechanical support.

No floor drilling, next steps to produce light shield and support components.





# Hole Manufacture

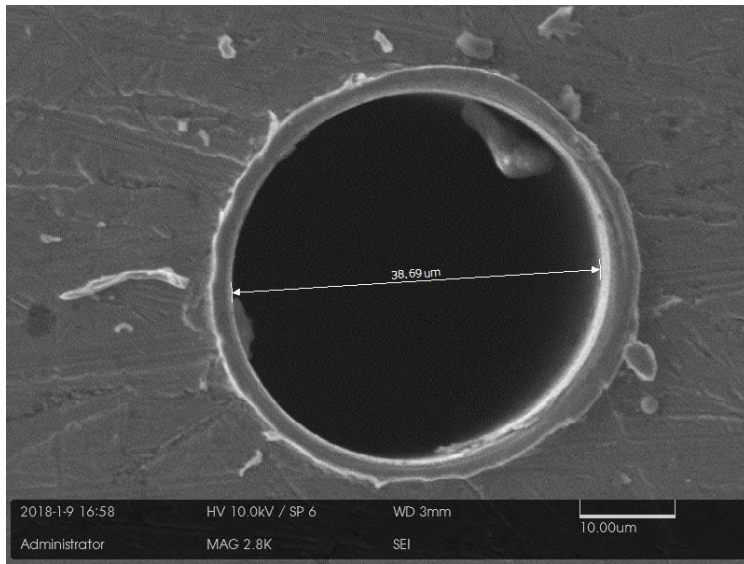
20um laser drilled hole completed

30um machined hole drill bits being manufactured

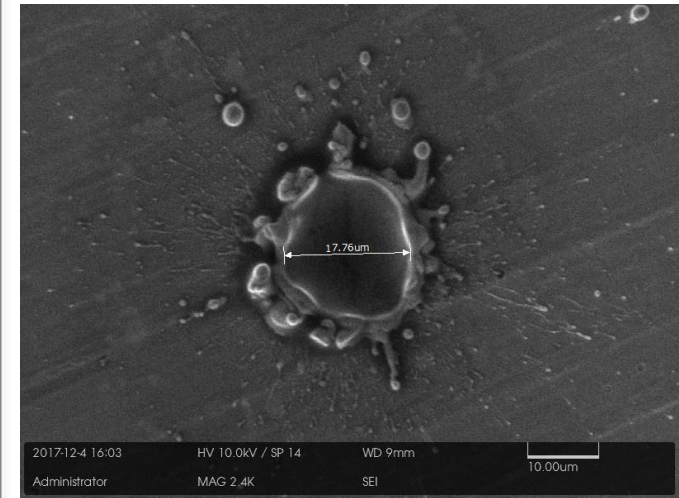
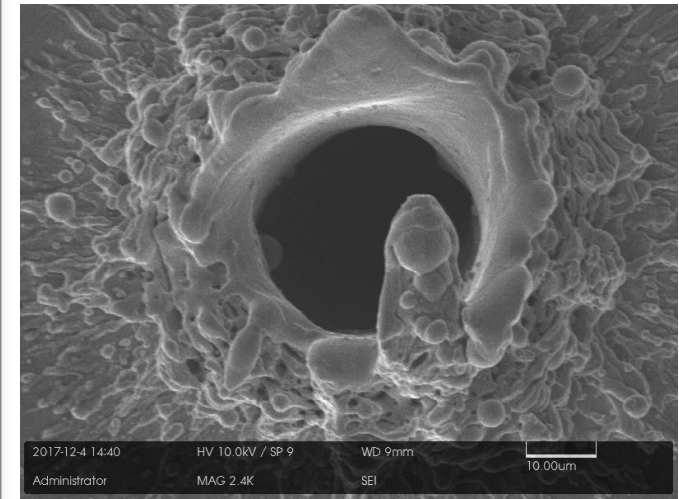
Both 250&350 um drill lengths

No breakages!

Propose to use this for nozzle manufacture



*30um hole, mechanically drilled*



*20um hole, laser machined*

Scitech, Rutherford Appleton Laboratories, UK

# Pfeiffer TurboPumps

Arrived 12 January

Checked contents:

- 3\* HiPace 300l/s kits
- 3\* HiPace 700l/s kits
- 1\* DN200/DN160 reducer flange

*CH plugs, order UK C13 power cables*

Will dispatch from CERN today.



# Nozzle Manufacture

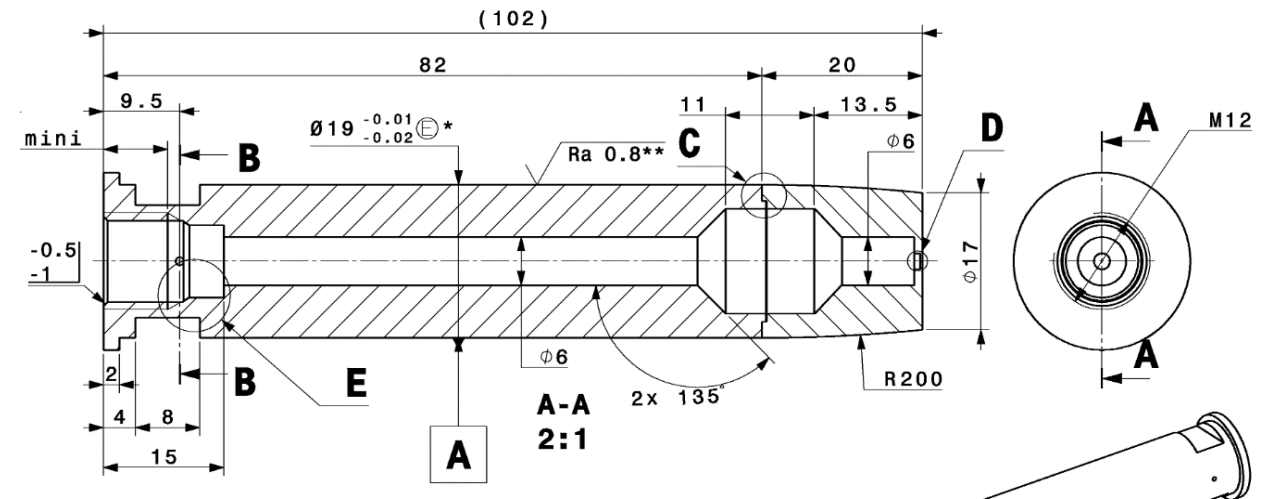
All parts manufactured at Scitech, *Rutherford Appleton Labs, UK*

*Now the welding and drilling remain.*

Test welds taking place this week

Based on hole drilling we will use mechanical drill for 30um holes.

Hope to receive by **end of January**





[home.cern](http://home.cern)