

# **Berichtswesen im Bereich Transport Fahrzeuge, Krananlagen und Aufzüge am CERN**

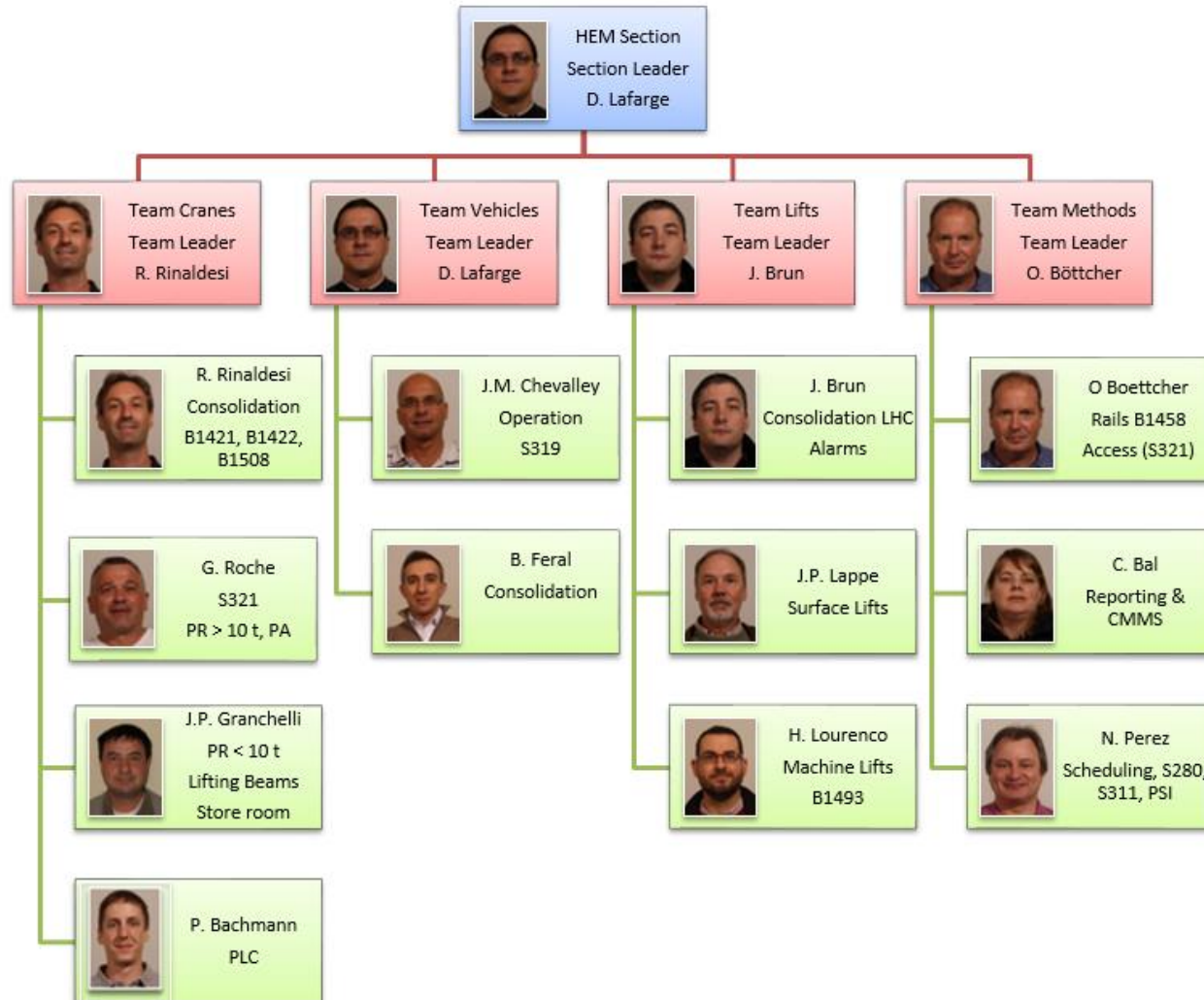
Infor EAM User Group Meeting DACH and Research Organisations

Oliver Böttcher / EN-HE-HEM - 08/12/2017



ENGINEERING  
DEPARTMENT

# EN-HE-HEM Handling Equipment Management Section

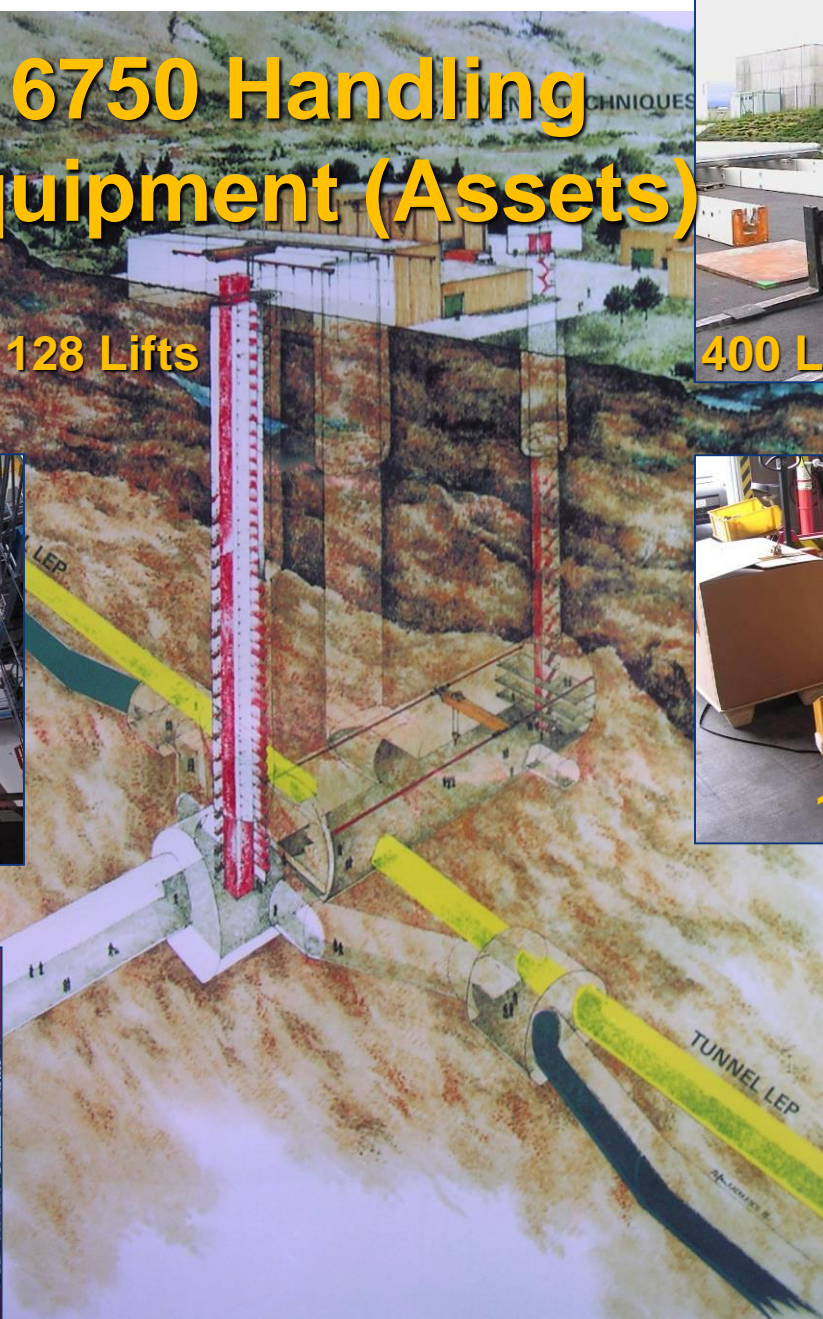




# 6750 Handling Equipment (Assets)



128 Lifts



All data are approximate values

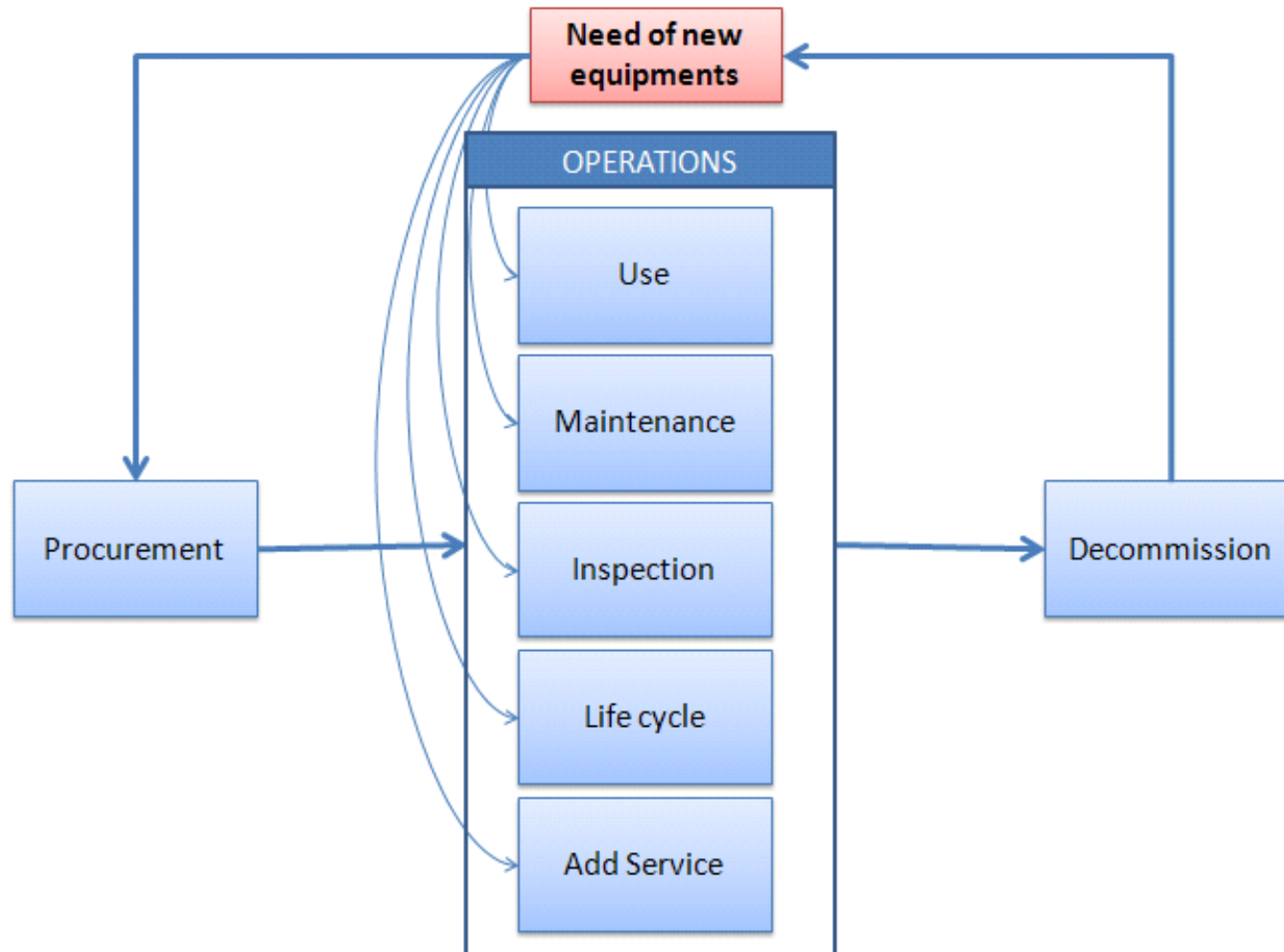
# Safety implementation at CERN

- “All executive tasks aimed at ensuring the Safety of personnel and equipment shall be the sole responsibility of the Departments, ... .”
- SR-M Safety Regulation for Mechanical Equipment
  - Departments have full responsibility for commissioning, use authorisation, correct utilisation and for the safety file and have to stop the equipment, should its Safety not be ensured!
- GSI-M1 General Safety Instruction for Standard Equipment
  - Departments have to ensure technical conformity and
  - must respect the instructions and responsibilities for safe use and operation!

(taken from DG/SC-DI/MB/ma/2006-018 (17.11.2006) / SR-M and GSI-M1 (14.4.2008))



# Handling Equipment Life-cycle Process



# HM Activities 2010 – Report example

- Overview about number of interventions, worked hours and costs related to different type of services

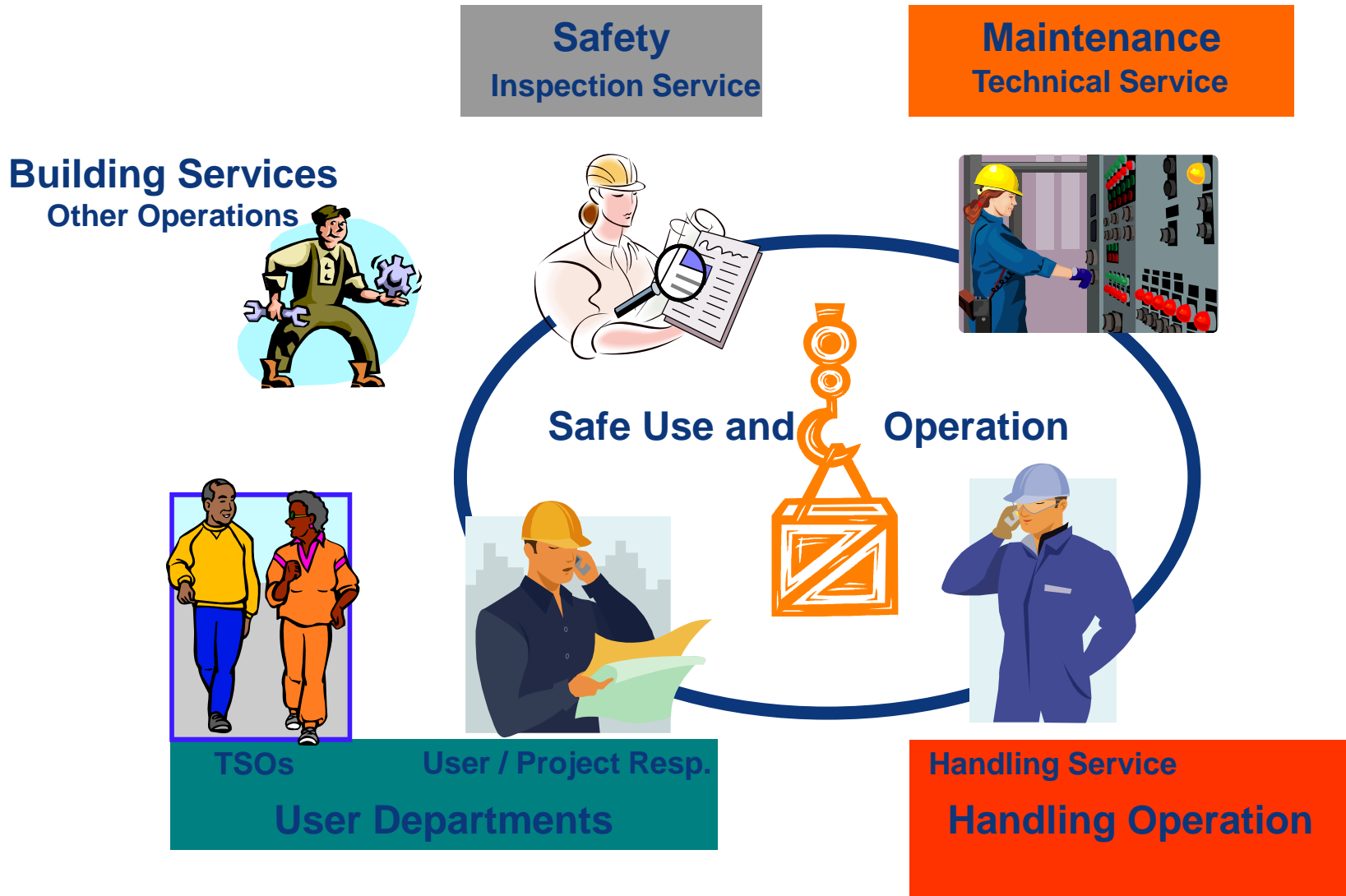
|  | Cranes       |               |              | Vehicles     |              |              |
|--|--------------|---------------|--------------|--------------|--------------|--------------|
|  | Interv.      | hours         | KCHF         | Interv.      | hours        | KCHF         |
| <b>Technical Service</b>                                     |              |               |              |              |              |              |
| Standard Maintenance Service (Fixcost + PRV, CD, CR, CA, T1) | 1,060        | 5,814         | 1,125        | 1,200        | 5,300        | 650          |
| Assistance to Periodic Insp.                                 | 550          | 500           | 20           |              |              |              |
| Consolidation works (asbestos and electronics etc. - CA)     | 50           | 1,500         | 92           |              |              |              |
| Components overhaul (CR)                                     | 11           | 1,500         | 102          | 15           | 2,000        | 334          |
| Heavy repairs (CR)   | 6            | 2,400         | 200          |              |              |              |
| Complete renovation (CA)                                     | 4            | 3,000         | 796          |              |              |              |
| Replacement of equipment                                     | 11           | 1,700         | 883          |              |              |              |
| New equipment  | 2            | 320           | 215          | 28           |              | 1,600        |
| <b>Total</b>   | <b>1,694</b> | <b>16,734</b> | <b>3,433</b> | <b>1,243</b> | <b>7,300</b> | <b>2,584</b> |

Infor EAM

Other

- Different databases tools need to be consulted
  - Getting an overview about realized services and resources is redundant and timetaking work
- We intend to integrate project management into Infor EAM

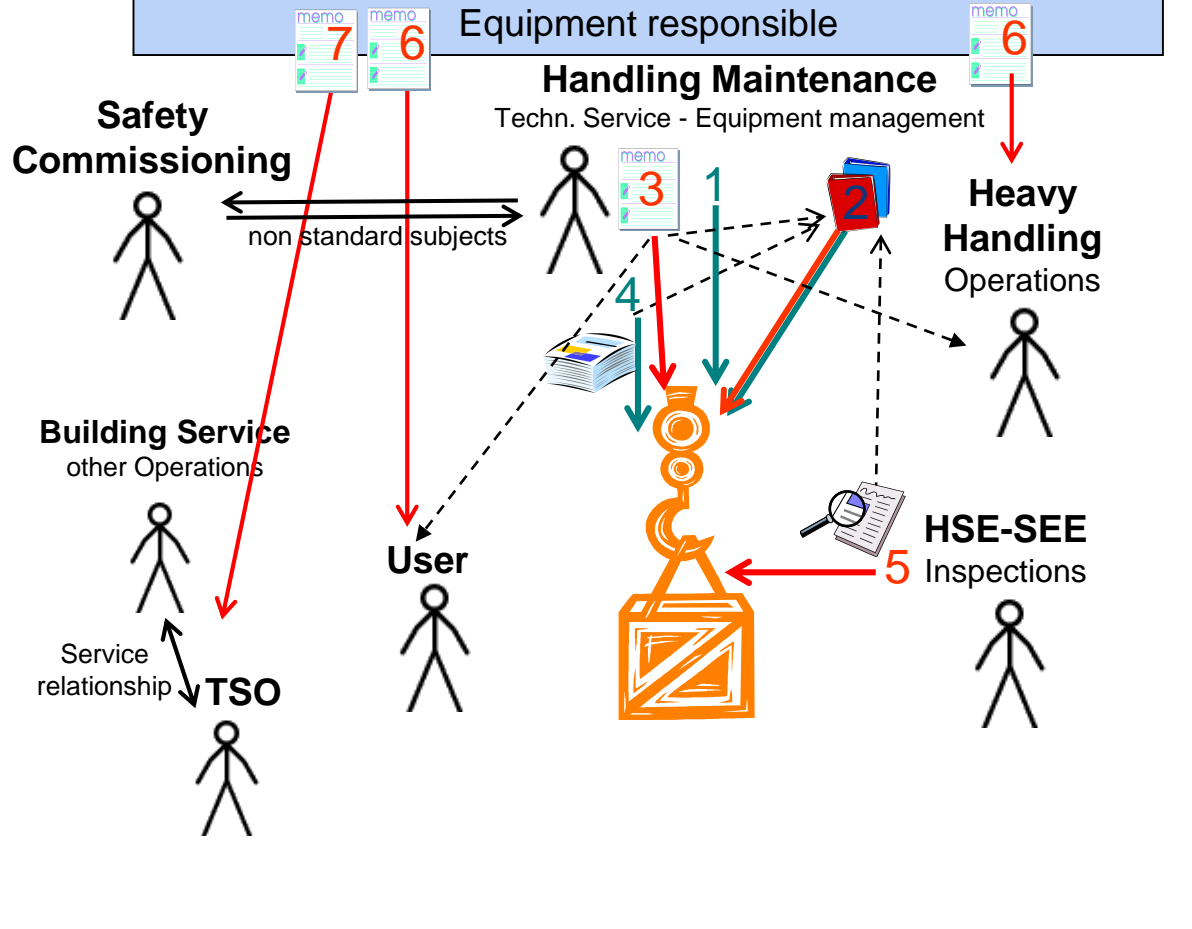
# Handling Equipment Stakeholders at CERN



# HEM Document Handling

## EN-HE-HEM Handling Equipment Management

Equipment responsible



1. Procurement + Installation (HEM)
2. Safety file: Risk analysis, Certificates, Techn., Maintenance + Insp. doc., ... (HEM)
3. Commissioning + Use authorisation + Stop + re-commissioning (HEM)
4. Maintenance service (HEM)
5. Inspections + Reports (HSE)
6. Operators authorisation (HEM)
7. Use of lifting equipment for other purpose (risk analysis HEM)

→ We intend to integrate case and document management tools in EAM to properly follow-up observations, situations and safety related processes





ENGINEERING  
DEPARTMENT

Merci