

# Site Status Board

*Site Monitoring from the VO perspective*

**Jacobo Tarragón**

**Pablo Saiz, J. Andreeva, M. Devesas Campos, R. Rocha**

*CERN :: IT :: Experiment Support*

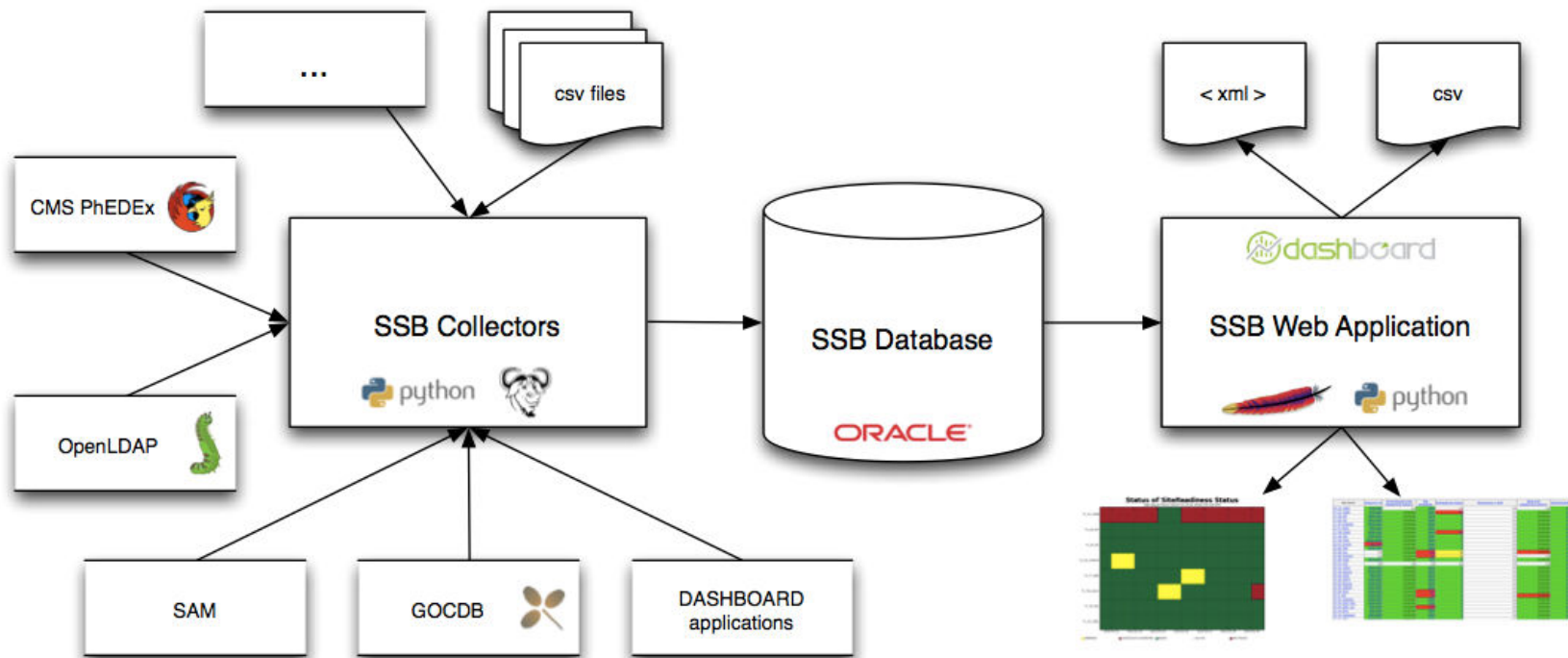
***5<sup>th</sup> User Forum, Uppsala***

***12 April 2010***

- **Single entry point for site performance monitoring picture from the perspective of the particular VO**
- **Performance is based on metrics defined by the VO**
- **The system should be very flexible and customizable (adding/deleting metrics, increasing/decreasing criticality of metrics, combining several metrics in a single one, creating alternative views)**
- **Straight forward navigation to the primary information source**
- **All information should be available in machine-readable format in order to be consumed by other applications (fabrics monitoring, etc...)**
- **History and metric evolution needs to be kept**



- **Developed under CMS request**
  - computing shifts
  - site commissioning
  - space monitoring
- **Also widely used by LHCb**
  - job monitoring
  - space monitoring
- **In evaluation by**
  - **ATLAS**
  - **ALICE**
- **100-150 unique visitors access SSB application daily just in CMS VO**
- **Over 170 different metrics stored for the four experiments**

- **Web application for site monitoring**
- **Sites are represented according to VO specific metrics**
- **Adding and editing metrics is easy**
- **Metrics can have different sources**
  - CSV files providing the values
  - Specific data collectors (BDII, PhEDEx, SAM...)
- **Configurable views for the different user profiles**
- **Keeps data history**

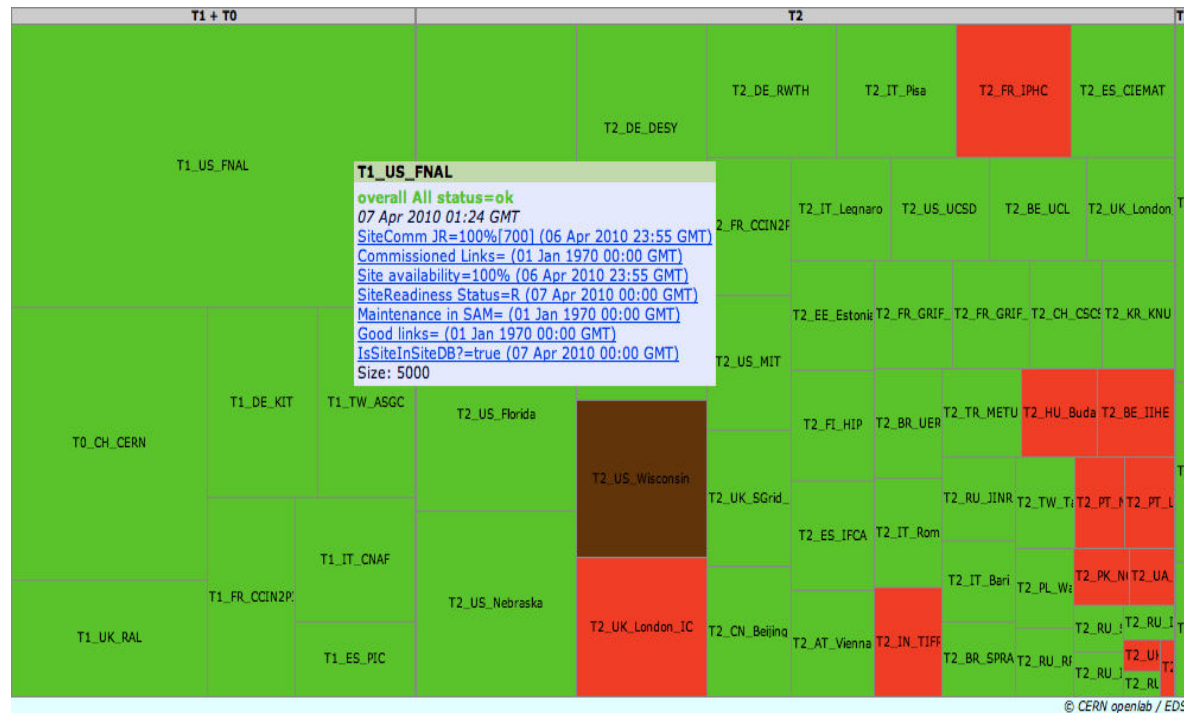


- A metric can be any relevant information for the experiment
  - *Data transfers, SAM results, BDII visibility, Maintenance info...*
- Metrics use a color code and value to represent their status
- Site global status depends on metrics marked as critical
- Metric criticality can be redefined at any time
- Combination of metrics
  - **OK** if all metrics are OK
  - **warning** if at least one metric is in warning but none is failing
  - **error** if at least one metric is failing but none is in maintenance
  - **maintenance** if at least one metric is under maintenance

T0 +T1	T2			
✓ <a href="#">T0_CH_CERN</a>	✓ <a href="#">T2_BE_UCL</a>	● <a href="#">T2_AT_Vienna</a>	✓ <a href="#">T2_BE_IJHE</a>	
✓ <a href="#">T1_CH_CERN</a>	✓ <a href="#">T2_CH_CSCS</a>	● <a href="#">T2_BR_SPRACE</a>	✓ <a href="#">T2_BR_UERJ</a>	
✓ <a href="#">T1_DE_KIT</a>	✓ <a href="#">T2_DE_RWTH</a>	✓ <a href="#">T2_CN_Beijing</a>	✓ <a href="#">T2_DE_DESY</a>	
✓ <a href="#">T1_ES_PIC</a>	✓ <a href="#">T2_ES_IFCA</a>	● <a href="#">T2_EE_Estonia</a>	✓ <a href="#">T2_ES_CIEMAT</a>	
✓ <a href="#">T1_FR_CCIN2P3</a>	✓ <a href="#">T2_FR_GRIF_IRFU</a>	✓ <a href="#">T2_FL_HIP</a>	✓ <a href="#">T2_FR_CCIN2P3</a>	
✓ <a href="#">T1_IT_CNAF</a>	✓ <a href="#">T2_HU_Budapest</a>	✓ <a href="#">T2_FR_GRIF_LLRL</a>	✓ <a href="#">T2_FR_IPHC</a>	
✓ <a href="#">T1_TW_ASGC</a>	✓ <a href="#">T2_IT_Legnaro</a>	✓ <a href="#">T2_IN_TIFR</a>	● <a href="#">T2_IT_Bari</a>	
✓ <a href="#">T1_UK_RAL</a>	✓ <a href="#">T2_KR_KNU</a>	✓ <a href="#">T2_IT_Pisa</a>	✓ <a href="#">T2_IT_Rome</a>	
✓ <a href="#">T1_US_FNAL</a>	✓ <a href="#">T2_PT_NCG_Lisbon</a>	✓ <a href="#">T2_PL_Warsaw</a>	✓ <a href="#">T2_PT_LIP_Lisbon</a>	
	✓ <a href="#">T2_RU_ITEP</a>	✓ <a href="#">T2_RU_IHEP</a>	✓ <a href="#">T2_RU_INR</a>	
	✓ <a href="#">T2_TR_METU</a>	✓ <a href="#">T2_RU_JINR</a>	✓ <a href="#">T2_RU_SINP</a>	
	✓ <a href="#">T2_UK_London_Brunel</a>	✓ <a href="#">T2_TW_Taiwan</a>	✓ <a href="#">T2_UA_KIPT</a>	
	✓ <a href="#">T2_UK_SGrid_RALPP</a>	✓ <a href="#">T2_UK_London_IC</a>	✓ <a href="#">T2_UK_SGrid_Bristol</a>	
	✓ <a href="#">T2_US_MIT</a>	✓ <a href="#">T2_US_Caltech</a>	✓ <a href="#">T2_US_Florida</a>	
	✓ <a href="#">T2_US_UCSD</a>	✓ <a href="#">T2_US_Nebraska</a>	✓ <a href="#">T2_US_Purdue</a>	
		✓ <a href="#">T2_US_Wisconsin</a>		
T2 waiting room				
T3				

- Sites are arranged by groups
- Status is calculated from metrics defined as critical by VO
- Icon represents current status
  - ✓ ✓ ● ● ●
- Site maintenance information 
- Links to support tickets when site under investigation 

- Site color represents global or metric status
- Weight sites by *job slots, disk space, site size or tier number*

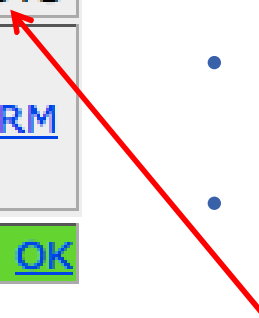




Site Name	SiteComm JR	Commissioned Links (expand this column)	Site availability	SiteReadiness Status	Maintenance in SAM	Good links (expand this column)	IsSiteInSiteDB?
T0_CH_CERN	94%(300)	n/a	100%	n/a	n/a	n/a	true
T1_CH_CERN	94%(300)	combined	100%	NB	n/a	combined	true
T1_DE_KIT	100%(300)	combined	100%	R	n/a	combined	true
T1_ES_PIC	100%(400)	combined	100%	R	n/a	combined	true
T1_FR_CCIN2P3	100%(300)	combined	100%	R	n/a	combined	true
T1_IT_CNAF	99%(300)	combined	100%	R	n/a	combined	true
T1_TW_ASGC	100%(100)	combined	100%	NB	n/a	combined	true
T1_UK_RAL	100%(300)	combined	100%	R	n/a	combined	true
T1_US_FNAL	100%(1000)	combined	100%	R	n/a	combined	true
T2_AT_Vienna	57%(100)	combined	100%	R	n/a	combined	true
T2_BE_IIHE	100%(400)	combined	100%	R	n/a	combined	true
T2_BE_UCL	n/a	combined	20%	W	n/a	combined	true
T2_BR_SPRACE	n/a	combined	0%	W	n/a	n/a	true
T2_BR_UERJ	100%(300)	combined	84%	R	n/a	combined	true
T2_CH_CAF	n/a	n/a	n/a	n/a	n/a	n/a	true
T2_CH_CSCS	100%(300)	combined	100%	R	n/a	combined	true
T2_CN_Beijing	100%(400)	combined	100%	R	n/a	combined	true
T2_DE_DESY	98%(400)	combined	100%	R	n/a	combined	true
T2_DE_RWTH	100%(600)	combined	100%	R	n/a	combined	true
T2_EE_Estonia	100%(500)	combined	100%	R	n/a	combined	true
T2_ES_CIEMAT	100%(300)	combined	100%	R	n/a	combined	true
T2_ES_IFCA	100%(400)	combined	72%	R	n/a	combined	true
T2_FI_HIP	100%(300)	combined	0%	R	n/a	combined	true
T2_FR_CCIN2P3	100%(500)	combined	100%	R	n/a	combined	true
T2_FR_GRIF_IRFU	100%(600)	combined	100%	R	n/a	combined	true
T2_FR_GRIF_LLR	85%(700)	combined	72%	R	n/a	combined	true
T2_FR_IPHC	98%(500)	combined	100%	R	n/a	combined	true
T2_HU_Budapest	100%(600)	combined	100%	R	n/a	combined	true
T2_IN_TIFR	100%(300)	combined	100%	R	n/a	combined	true

Site Name	<a href="#">SiteComm JR</a>
<a href="#">T0_CH_CERN</a>	94%(300)

Site Name	SAM TESTS	
	<a href="#">CE</a>	<a href="#">SRM</a>
<a href="#">T1_DE_KIT</a>	OK	OK



- Each column represents a metric
- Metric values can link to details
- Columns can be grouped, even from different sources
- Site and column names link to metric history
- Moving cursor over the header of the column results in showing the time stamp of latest update

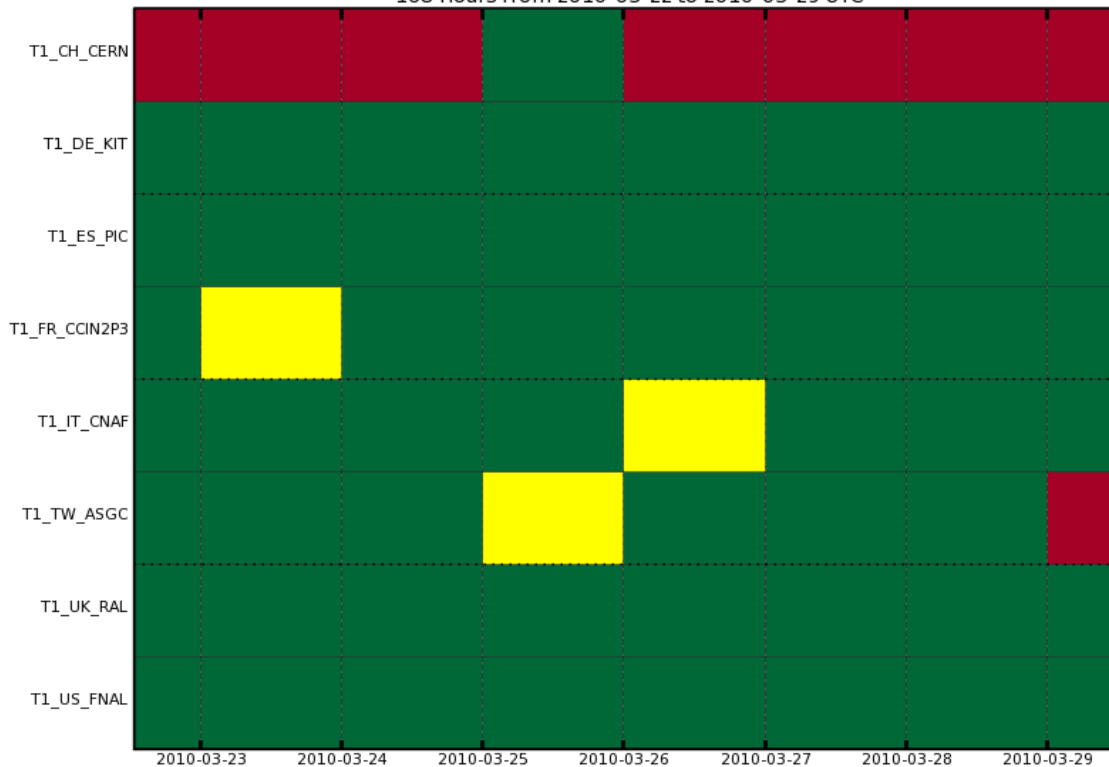
Site Name	Space Monitoring								Combined Space Monitoring (expand this column)
	Pledged, TB	subscription, TB	on site(phedex), TB	on site(DBS), TB	custodial subscription, TB	custodial on site, TB	Available BDII space	BDII used space	
T1_ES_PIC	1065	0.14	392.0	624.10	367.85	367.22	1650.42	13.04	combined
T1_FR_CCIN2P3	1535	85.43	616.7	893.96	809.82	790.95	1242.56	205.99	combined
T1_IT_CNAF	525	2.39	509.2	1057.65	789.17	787.02	1890.78	0.00	combined
T1_TW_ASGC	1080	6.54	243.4	258.25	171.47	170.92	49.28	125.20	combined

- Multiple metrics can be combined in one value
- Dynamic result. Refresh rate is defined by VO users individually for every column

- **Time range configurable**
- **Display one or multiple sites**
- **Plots are clickable to see metric details**
- **Display all values or just value changes**
- **Force metrics to update information**
- **Discard current data**

## Status of SiteReadiness Status

168 Hours from 2010-03-22 to 2010-03-29 UTC



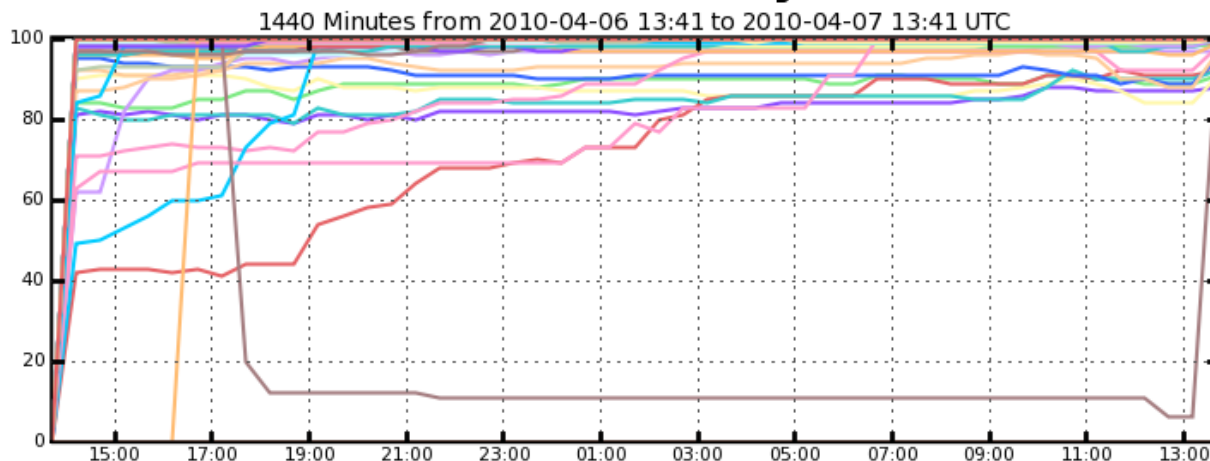
Time period

Sites

Display the values

■ WARNING    
 ■ SCHEDULED-DOWNTIME    
 ■ READY    
 ■ No Info    
 ■ NOT-READY

## Values of Analysis



- |                             |                           |                          |                           |
|-----------------------------|---------------------------|--------------------------|---------------------------|
| T2_BR_UERJ (100.00)         | T2_US_Purdue (99.00)      | T2_FI_HIP (100.00)       | T2_UK_SGrid_RALPP (99.00) |
| T2_BE_UCL (100.00)          | T2_DE_RWTH (100.00)       | T2_DE_DESY (100.00)      | T2_US_Caltech (99.00)     |
| T2_UK_London_Brunel (99.00) | T2_IT_Pisa (100.00)       | T2_EE_Estonia (99.00)    | T2_IN_TIFR (100.00)       |
| T2_TW_Taiwan (100.00)       | T2_US_Florida (100.00)    | T2_FR_GRIF_IRFU (100.00) | T2_UK_London_IC (100.00)  |
| T2_IT_Bari (100.00)         | T2_US_Nebraska (100.00)   | T2_ES_CIEMAT (100.00)    | T2_FR_CCIN2P3 (6.00)      |
| T2_US_UCSD (100.00)         | T2_PT_NCG_Lisbon (100.00) | T2_RU_IHEP (100.00)      | T2_PL_Warsaw (100.00)     |
| T2_US_Wisconsin (98.00)     | T2_CN_Beijing (100.00)    | T2_US_MIT (99.00)        | T2_BR_SPRACE (98.00)      |
| T2_CH_CSCS (99.00)          | T2_FR_GRIF_LLR (99.00)    | T2_ES_IFCA (98.00)       | T2_FR_IPHC (99.00)        |
| T2_IT_Legnaro (96.00)       | T2_RU_JINR (99.00)        | T2_IT_Rome (98.00)       | T2_BE_IHE (98.00)         |
| T2_AT_Vienna (98.00)        | T2_RU ITEP (92.00)        | T2_TR_METU (97.00)       | ... plus 7 more           |

Total: 4,531 , Average Rate: 0.05 /s

## Existing views

View	Columns	Actions
<a href="#">default</a>	all non-debug	
<a href="#">commission</a>	SiteComm JR,Commissioned Links,Site availability,Good links,IsSiteInSiteDB?,Maintenance in SAM,SiteReadiness Status	<a href="#">modify</a> <a href="#">remove</a>
<a href="#">expert</a>	Pledged, TB,Pledged slots,SiteSize	<a href="#">modify</a> <a href="#">remove</a>
<a href="#">space</a>	on site(phedex), TB,on site(DBS), TB,Pledged, TB,onsite(Russia), TB,custodial subscription, TB,Combined Space Monitoring,subscribed(Russia), TB,custodial on site, TB,BDII used space,Available BDII space,subscription, TB	<a href="#">modify</a> <a href="#">remove</a>
<a href="#">maint</a>	OSG downtime,Savannah,Maintenance in SAM,GOC downtime,Savannah CMS,Savannah manual,SAM Maintenance 2,Under investigation,Maintenance,CIC downtime	<a href="#">modify</a> <a href="#">remove</a>
<a href="#">transfers</a>	# Links,To T0,In rate,To_T3_phedex,To_T0_phedex,In_rate_phedex,Transfer rate,To_T2_phedex,To_T1_phedex,Out_rate_phedex,Transfer_rate_phedex,To T3,To T2,To T1,Out rate	<a href="#">modify</a> <a href="#">remove</a>
<a href="#">jobrobot_debug</a>	JobRobot_24h,JobRobot_1h	<a href="#">modify</a> <a href="#">remove</a>
<a href="#">storage</a>	on site(DBS), TB,Pledged disk,Used tape,PhEDEx non-custodial,Pledged tape,Used disk,PhEDEx coming,Free tape,Free disk,Savannah CMS	<a href="#">modify</a> <a href="#">remove</a>
<a href="#">test</a>	CE,Analysis	<a href="#">modify</a> <a href="#">remove</a>
<a href="#">develop</a>		<a href="#">modify</a> <a href="#">remove</a>

## Add new view:

 [Create View](#)

- Users with special privileges can create custom views and define which metrics to include
- Views can be modified or removed without data loss

- CMS Site Commission view

Site Name	SiteComm JR	Commissioned Links (expand this column)	Site availability	SiteReadiness Status	Maintenance in SAM	Good links (expand this column)	IsSiteInSiteDB?
<a href="#">T0_CH_CERN</a>	94%(300)	n/a	100%	n/a	n/a	n/a	true
<a href="#">T1_CH_CERN</a>	94%(300)	combined	100%	NR	n/a	combined	true
<a href="#">T1_DE_KIT</a>	100%(300)	combined	100%	R	n/a	combined	true
<a href="#">T1_ES_PIC</a>	100%(400)	combined	100%	R	n/a	combined	true
<a href="#">T1_FR_CCIN2P3</a>	100%(300)	combined	100%	R	n/a	combined	true

- ATLAS disclosed GRID view

Site Name	SRM SAM 48h	DDM 12h	DDM 48h	Ganga Robot 24h	Maintenance in SAM
<a href="#">AGLT2</a>	100	100	100	100	3 SRMv2 up. 3 CE up.
<a href="#">ALBERTA-LCG2</a>	n/a	n/a	n/a	n/a	All services in maint
<a href="#">Australia-ATLAS</a>	100	100	100	47	3 SRMv2 up. 3 CE up.
<a href="#">BEIJING-LCG2</a>	96	100	100	48	2 LFC_L up. 2 LFC up. 3 CE up. 3 SRMv2 up.
<a href="#">BNL-ATLAS</a>	97	100	100	100	3 SRMv2 up. 1 FTS up. 6 CE up. 2 LFC up. 2 LFC_L up.
<a href="#">BU_ATLAS_Tier2</a>	100	100	99	100	3 SRMv2 up. 3 CE up.



## Column Information

Column Name

Column Description

Column URL  If you want to have a link from the column header, put it here

Column Group

Column Critical  This metric contributes to the overall color of the site

Column debug  Keep this box if you don't want the column in the general view

## Column Source

**set a data source URL if you want to provide the data**

Data source  This page will be downloaded, and it should contain the status of the sites for this test<sup>1</sup>

**- or define a collector to do it -**

Uses Collector  Use a specific collector instead of downloading the data source

Collector name  If *Uses Collector* is set, this plugin will be used for collecting the data

Column frequency  Number of seconds that the collector should wait before getting the data again. If *Uses Collector* is not set, the data source will be fetched with the default interval (600s)

Add column

- Provide basic information
- Provide a data URI or set a collector to retrieve the values
- Column criticality (to calculate the site global status)
- Debug columns won't show in the main table
- Restricted to users with special privileges
- Define frequency of column update

Marking the site **T1\_DE\_FZK** under investigation

Click [here](#) to see the current Savannah tickets for this site. Then, fill the form below to mark the site as 'under investigation' in the Site Status Board

Type of ticket	<input type="text" value="Savannah support"/>
Ticket Number	<input type="text"/>
Description	<input type="text"/>
<input type="button" value="Add ticket"/>	

- **Savannah integration**
- **Tickets can be manually or automatically closed**
- **History of all site issues**
- **Easily extendible to other systems using new metrics**

**Add new SSB administrator:**

Certificate string:

E-mail:

- Administration actions require login
- x509 Security
- Privileged users must access using personal certificate

- **What?**
  - Easy overview of site status
  - Access to investigation and maintenance information
  - Flexibility
- **How?**
  - Multiple data sources
  - Column grouping and combination
  - Customized alternative views
- **Who?**
  - VO users involved in the computing activities

- **Dashboard**
  - <http://dashboard.cern.ch>
- **CMS production SSB**
  - <http://dashb-ssb.cern.ch/ssb.html>
- **CMS development SSB**
  - <http://dashb-ssb-devel.cern.ch>
- **LHCb production SSB**
  - <http://dashb-lhcb-ssb.cern.ch>
- **ATLAS evaluation SSB**
  - <http://dashb-atlas-ssb.cern.ch>
- **ALICE evaluation SSB**
  - <http://dashb-alice-ssb.cern.ch>