

EGI-InSPIRE: Technology and interaction with external providers

Michael Gronager, PhD

NDGF Director

April 13th, 2010, EGEE-UF5, Uppsala

Technology: EGEE vs EGI

- EGEE-III

- Middleware engineering by JRA1
- Integration, Testing and certification by SA3

- EGI-InSPIRE

- Middleware engineering by external providers
- Integration, Testing and certification by a collaboration between EP and EGI SA2
- Operational Tools by JRA1

Technology: EGEE vs EGI

- EGEE-III

- Middleware engineering by JRA1
- Integration, Testing and certification by SA3

- EGI-InSPIRE

- Middleware engineering by **external providers**
- Integration, Testing and certification by a collaboration between EP and EGI SA2
- Operational Tools by JRA1

External Providers

- EMI: European Middleware Project
- IGE: Initiative for Globus in Europe
- Others...



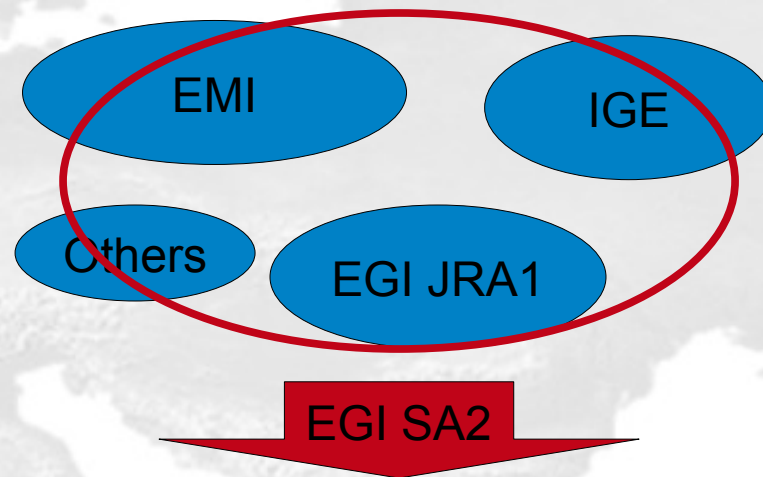
EMI

IGE

Others

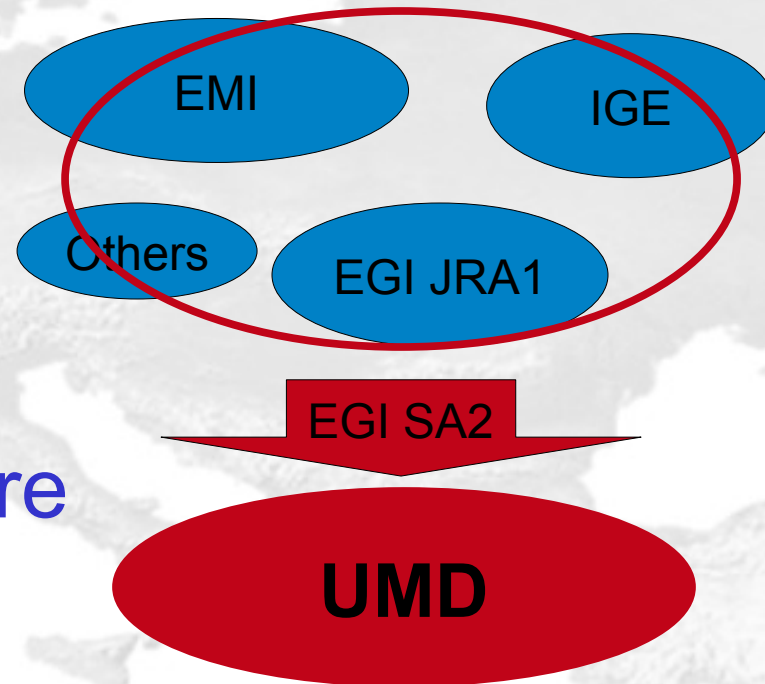
External Providers

- EMI: European Middleware Project
- IGE: Initiative for Globus in Europe
- Others...



External Providers

- EMI: European Middleware Project
- IGE: Initiative for Globus in Europe
- Others...



- Unified Middleware Distribution

SA2: Provisioning the Software Infrastructure

- To ensure a high quality middleware distribution composed from the best middleware providers
- To collect and coordinate the users requirements and feed it back to the software providers
- To support users and sites in the deployment of services

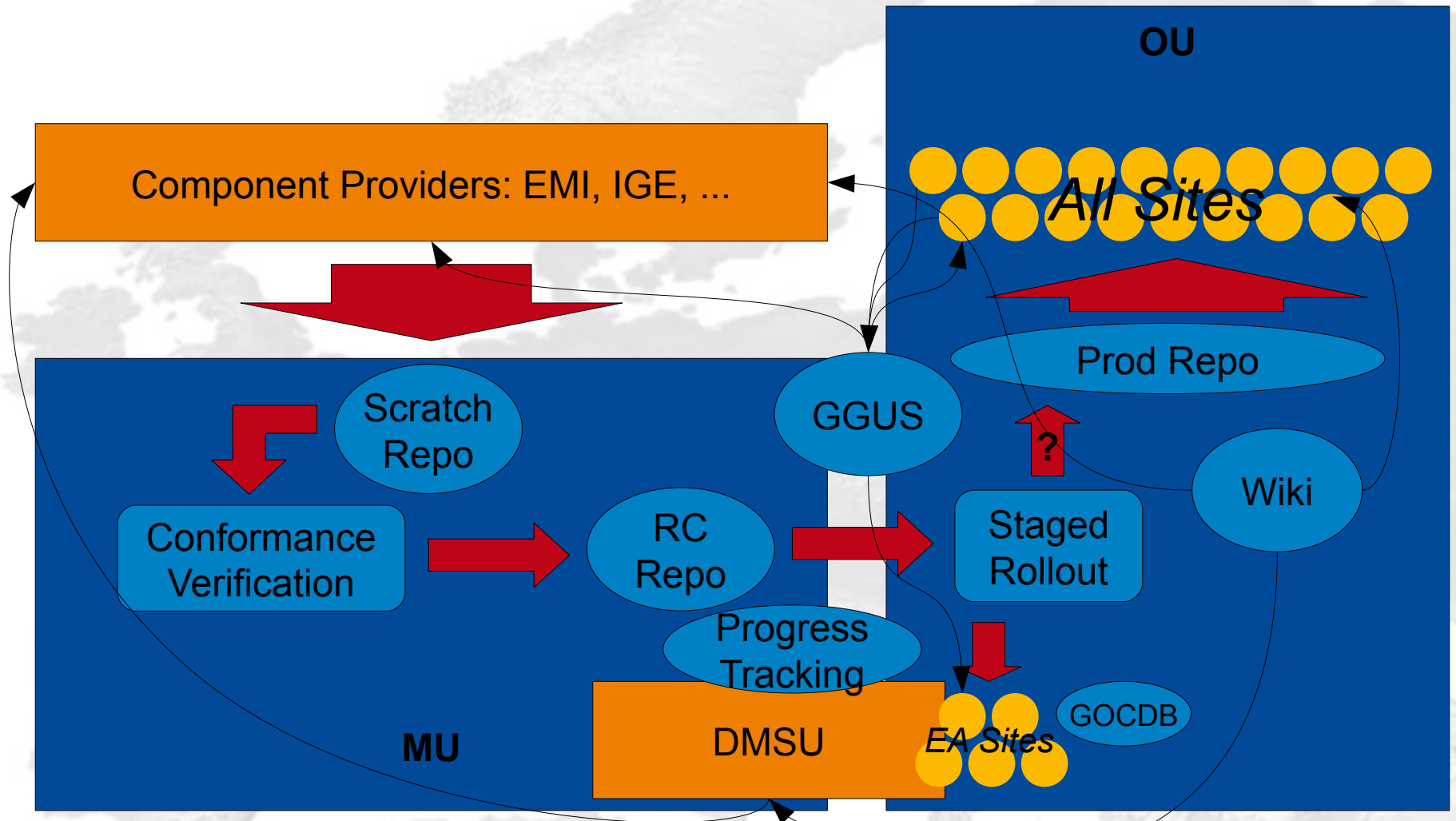
Releases X.Y.z

- Major (X) releases (~ 1-2 yearly):
 - New services
 - Might *not* be backwards compatible
- Minor (Y) releases (~1-2 monthly):
 - New functionality
 - Backwards compatible
- Revision and emergency releases:
 - Bug fixes only – by Software Provider or Deployed Middleware Support Unit
 - Backwards compatible

Repositories

- Contains UMD releases
 - Grouped into components
 - Binaries (rpm, deb)
 - **Multiple platforms**
 - Source
- (Write) Access controlled pr external software provider

The flow of a component



The flow of a component

- M/W rollout

- RC from Software Providers are tried on Early Adapter sites - *in production*

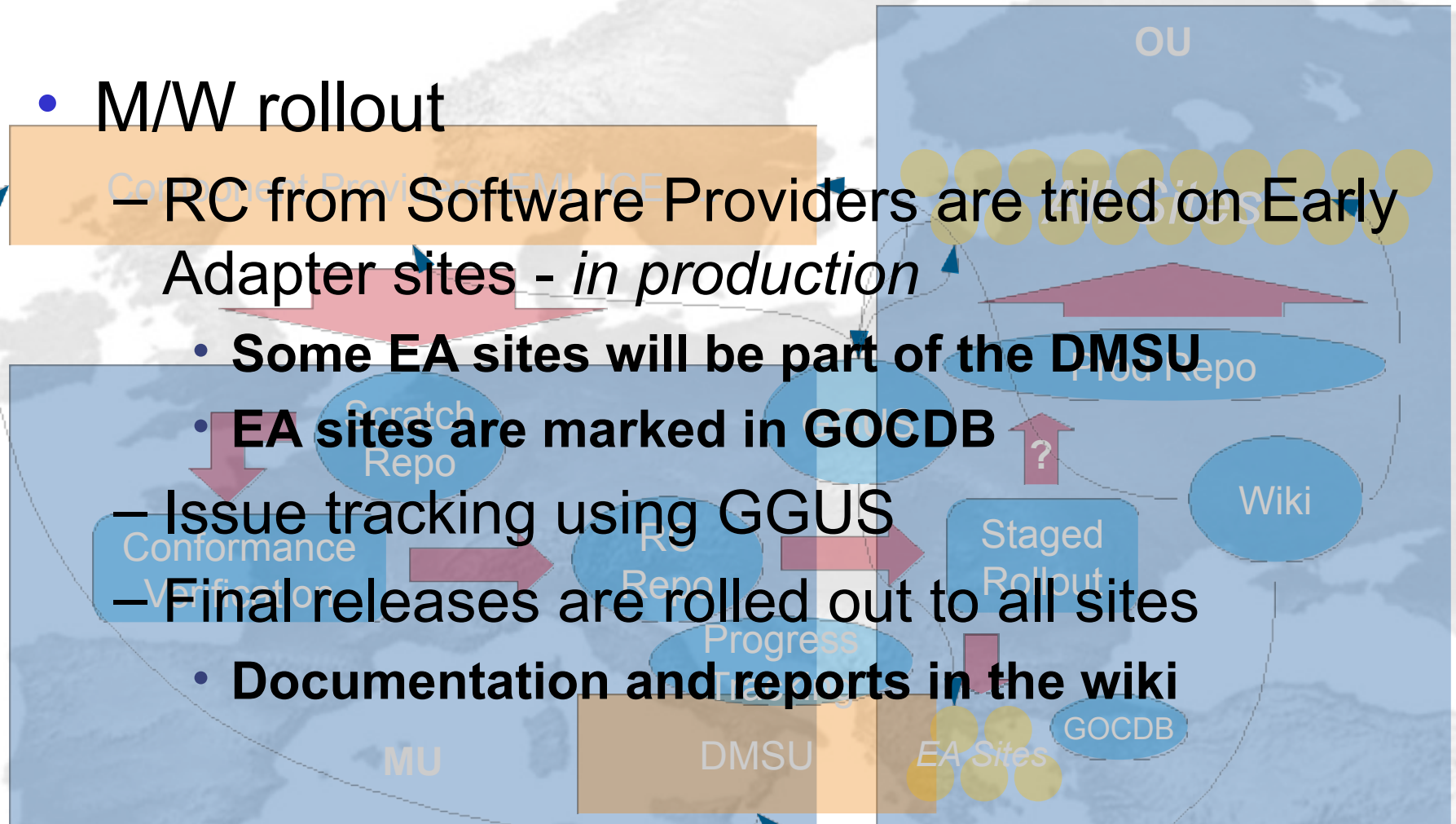
- Some EA sites will be part of the DMSU

- EA sites are marked in GOCDB

- Issue tracking using GGUS

- Final releases are rolled out to all sites

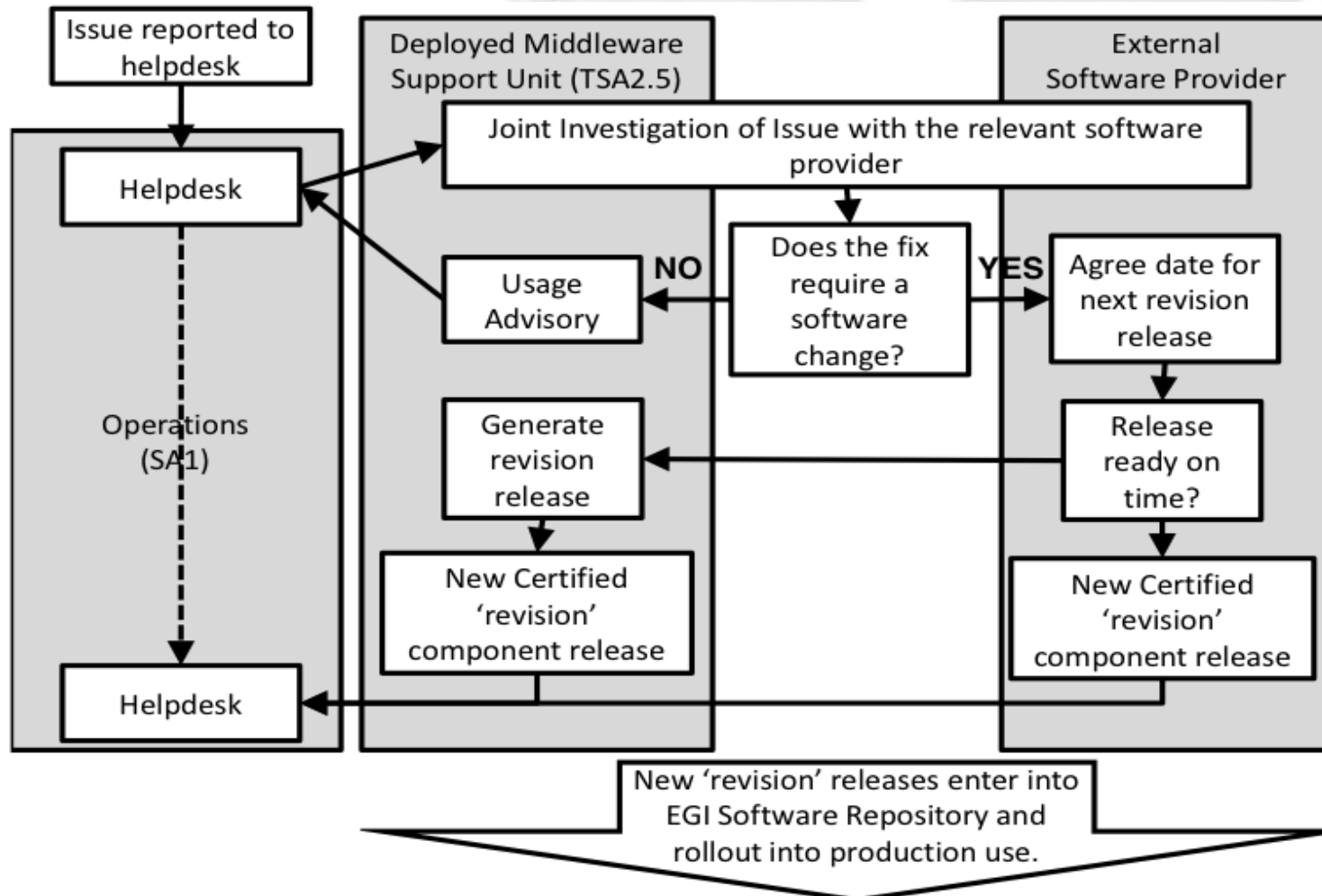
- Documentation and reports in the wiki



MW Support

- Operation, SA1, is the 1st level support
 - Assist in deployment and configuration
- Deployed Middleware Support Unit, DMSU, TSA2.5, is 2nd level support
 - Assist and provide configuration tweaks and e.g. site specific patches
- External SPs are 3rd level support
 - Debug and resolve reported bugs
- Issue tracking through GGUS

Support Issue workflow



Interfaces to SPs

- **Technology Coordination Board**
 - Forum for strategic technology guidance with members representing:
 - **EGI.eu technical team**
 - **Prime External Sps**
 - **Users aka supported Virtual Research Communities**
 - **Resource Providers**
- Service Level Agreements
- 2nd to 3rd level support interface

Interfaces to SPs

- Technology Coordination Board
- **Service Level Agreements**
 - Purpose:
 - **To declare the rights and responsibilities between EGI.eu and the Software Provider for a particular component.**
 - **To ensure a high level of synergy between independent projects.**
 - Negotiated and Monitored in the MCB
- 2nd to 3rd level support interface

Interfaces to SPs

- Technology Coordination Board
- Service Level Agreements
- **2nd to 3rd level support interface**
 - Day to day interface for support issues
 - Second level support, the DMSU, provides a flexible interface between independent projects

Summary

- The goal is to provide a high quality middleware distribution for the success of European e-Science
- Compared to EGEE we now rely mainly on external software providers
- An important step towards sustainability
- The success of this depend on:
 - High degree of synergy between the projects via SLAs and the TCB
 - Appropriate flexibility via in house competence and guidance via the DMSU