

The Individual Fellowships (IF) of the Marie Skłodowska-Curie Actions (MSCA)

Geneva, 15 March 2018

Sibylla Martinelli, Euresearch

Introduction



Introduction



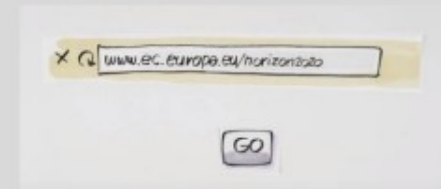
Horizon
2020

Marie
€ CH

The
MSCA

Horizon

2020



X ↻ www.ec.europa.eu/horizon2020

GO





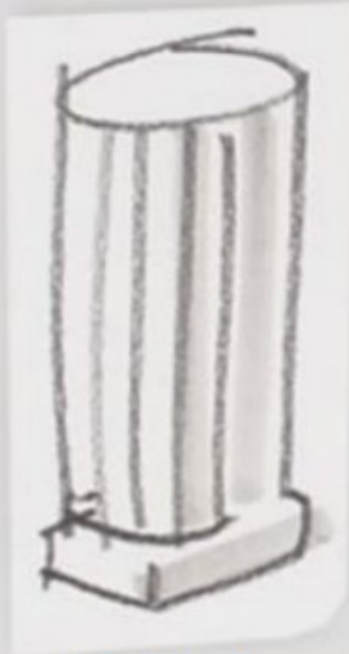
Horizon 2020

THE EU programme for
research and innovation

Horizon 2020

Spanning seven years (2014 - 2020) and with a budget of nearly €80 billion, it is the biggest EU research and innovation funding programme ever. It is part of the multi-annual financial framework and implemented via multi-annual work programmes.

Horizon 2020



'Excellent
Science'



'Industrial
Leadership'

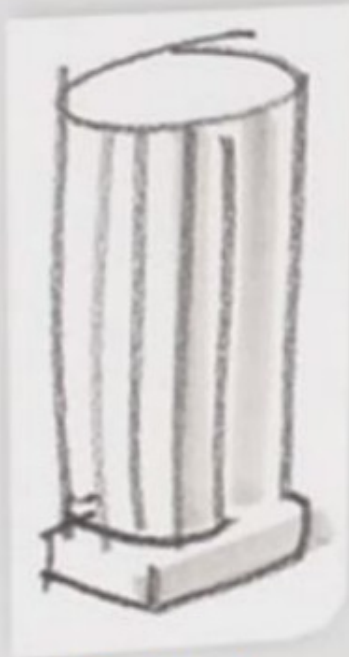


'Societal
Challenges'



'Excellent Science'

Horizon 2020



'Excellent
Science'



'Industrial
Leadership'

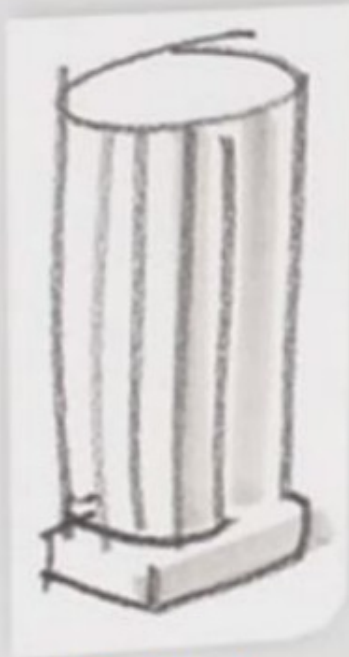


'Societal
Challenges'



'Industrial Leadership'

Horizon 2020



'Excellent
Science'



'Industrial
Leadership'

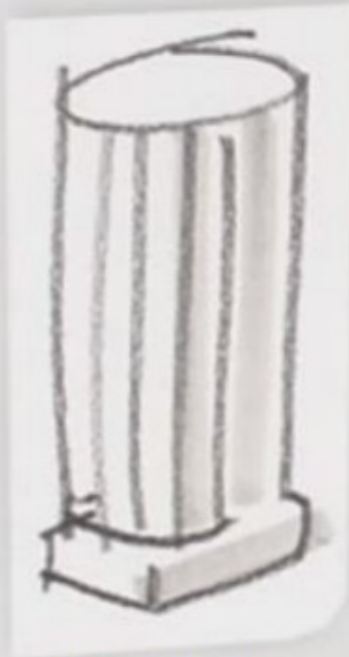


'Societal
Challenges'



'Societal Challenges'

Horizon 2020



'Excellent
Science'

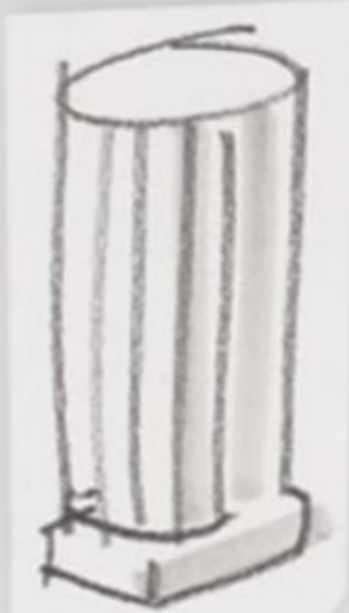


'Industrial
Leadership'



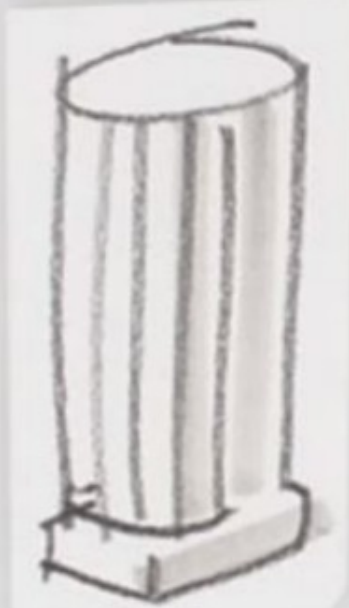
'Societal
Challenges'

The 'Excellent Science' Pillar



Activities under this Pillar aim to reinforce and extend the excellence of the Union's science base, ensure a steady stream of world-class researchers to Europe and consolidate the European Research Area to make the Union's research and innovation system more competitive on a global scale.

The 'Excellent Science' Pillar



European Research Council (ERC)

funding frontier research with excellence
being the sole criterion for funding

Marie Skłodowska-Curie Actions (MSCA)

offering support for training and career
development to researchers

Future and emerging technologies (FET)

helping to make Europe the best possible
environment for responsible and dynamic
cooperation on new and future technologies

Research infrastructure (RI)

helping to pool resources for large-scale
projects and providing researchers with
access to state-of-the-art infrastructure

European Research Council (ERC)

funding frontier research with excellence
being the sole criterion for funding

Marie Skłodowska- Curie Actions (MSCA)

offering support for training and career
development to researchers

Future and emerging technologies (FET)

helping to make Europe the best possible environment for responsible and dynamic cooperation on new and future technologies

Research infrastructure (RI)

helping to pool resources for large-scale
projects and providing researchers with
access to sota infrastructure

The 'Industrial Leadership' Pillar



This pillar aims to speed up development of the technologies and innovations that will underpin tomorrow's businesses and help innovative European SMEs to grow into world-leading companies.

The 'Industrial Leadership' Pillar

Leadership in Enabling and Industrial Technologies (LEIT):

NMBP, ICT, Space

supporting ground-breaking technologies in innovation



Access to Risk Finance

helping innovative companies access financing for high-risk ideas or development through loans and guarantees

SME Instrument

providing support to help SMEs assess the market viability of their ideas at high-risk stage and help them develop these ideas further

Leadership in Enabling and Industrial Technologies (LEIT):

NMBP, ICT, Space

supporting ground-breaking technologies in innovation



SME Instrument

providing support to help SMEs assess the market viability of their ideas at high-risk stage and help them develop these ideas further

Access to Risk Finance

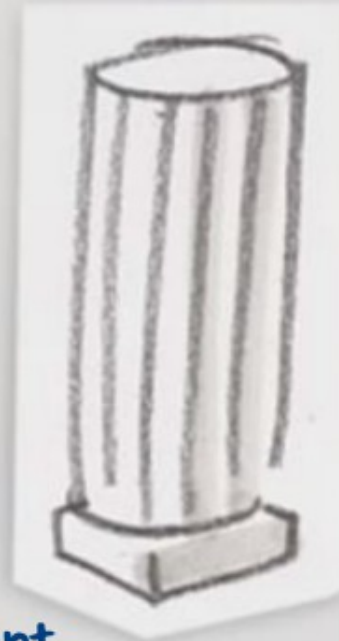
helping innovative companies access financing
for high-risk ideas or development through
loans and guarantees

The 'Industrial Leadership' Pillar

Leadership in Enabling and Industrial Technologies (LEIT):

NMBP, ICT, Space

supporting ground-breaking technologies in innovation



Access to Risk Finance

helping innovative companies access financing for high-risk ideas or development through loans and guarantees

SME Instrument

providing support to help SMEs assess the market viability of their ideas at high-risk stage and help them develop these ideas further

The 'Societal Challenges' Pillar

The EU has identified 7 priority challenges where targeted investment in research and innovation can have a real impact benefitting the citizen.

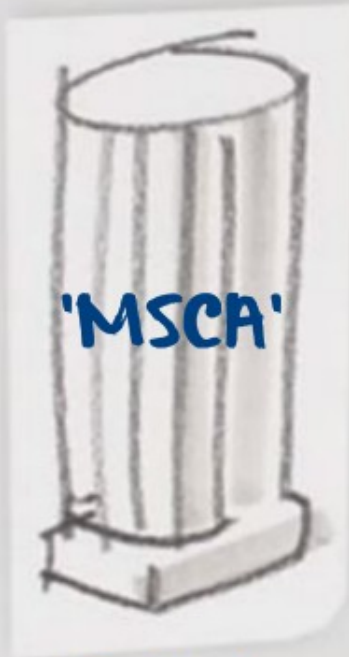


The 'Societal Challenges' Pillar

- 1 Health
- 2 Food/Bio
- 3 Energy
- 4 Transport
- 5 Climate
- 6 Europe in a Changing World
- 7 Secure Societies



Horizon 2020



'Excellent
Science'



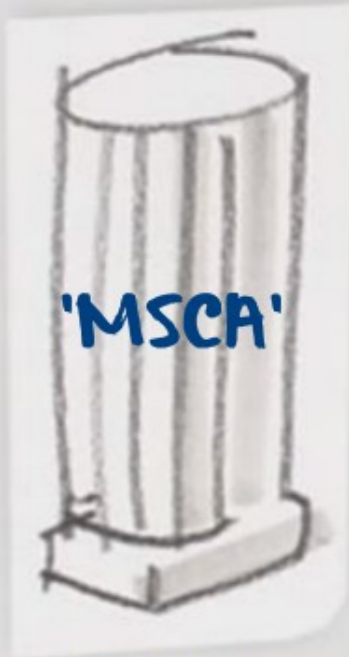
'Industrial
Leadership'



'Societal
Challenges'

'MSCH'

Horizon 2020



'Excellent
Science'



'Industrial
Leadership'



'Societal
Challenges'

Marie

£ CH

Marie Skłodowska-Curie

'After all, science is essentially international, and it is only through lack of the historical sense that national qualities have been attributed to it.'

Marie Curie

Swiss Status in #2020

- From 1 January 2017 onward Switzerland is again fully associated to #2020
- No restrictions on participation for Swiss researchers and institutions



The MSCA

MSCA in a Nutshell





MSCA Objectives

'Ensure the optimum development and dynamic use of Europe's intellectual capital in order to generate new skills, knowledge and innovation'

MSCA Objectives

- Provide funding for excellent researchers
- Encourage mobility across borders and sectors
- Foster collaboration among individuals and institutions

Budget 2014-2020: € 6 162 million

5 different MSC Actions

Host-driven:



ITN

bringing together universities, research institutes and other sectors from across the world to train researchers to doctoral level. Competitively selected joint research training and/or doctoral programmes are supported, which are implemented by European partnerships of universities, research institutions, and non-academic organisations.



COFUND

offering additional funding to regional, national and international programmes for research training and career development. COFUND programmes encourage the movement of researchers across borders and provide good working conditions. The scheme can support doctoral and fellowship programmes.

RISE



supporting short-term mobility of research and innovation staff of all career levels, including also administrative and technical staff. It is open to partnerships of universities, research institutions, and non-academic organisations both within and beyond Europe. In worldwide partnerships, academia-to-academia exchanges are permitted.

CSA:

NIGHT

Europe-wide public event to stimulate interest in research careers, especially among young people. The activities are focused on the general public and might take various forms such as hands-on experiments, science shows, debates, competitions or quizzes. The NIGHT takes place yearly, typically on the last Friday of the month of September.

Individual-driven:



IF

providing opportunities to researchers of any nationality to acquire and transfer new knowledge and to work on research and innovation in Europe (EU Member States and Horizon 2020 Associated Countries) and beyond.



ITN

bringing together universities, research institutes and other sectors from across the world to train researchers to doctorate level.. Competitively selected joint research training and/or doctoral programmes are supported, which are implemented by European partnerships of universities, research institutions, and non-academic organisations.

5 different MSC Actions

Host-driven:



ITN

bringing together universities, research institutes and other sectors from across the world to train researchers to doctoral level. Competitively selected joint research training and/or doctoral programmes are supported, which are implemented by European partnerships of universities, research institutions, and non-academic organisations.



COFUND

offering additional funding to regional, national and international programmes for research training and career development. COFUND programmes encourage the movement of researchers across borders and provide good working conditions. The scheme can support doctoral and fellowship programmes.



RISE

supporting short-term mobility of research and innovation staff of all career levels, including also administrative and technical staff. It is open to partnerships of universities, research institutions, and non-academic organisations both within and beyond Europe. In worldwide partnerships, academia-to-academia exchanges are permitted.

CSA:

NIGHT

Europe-wide public event to stimulate interest in research careers, especially among young people. The activities are focused on the general public and might take various forms such as hands-on experiments, science shows, debates, competitions or quizzes. The NIGHT takes place yearly, typically on the last Friday of the month of September.

Individual-driven:



IF

providing opportunities to researchers of any nationality to acquire and transfer new knowledge and to work on research and innovation in Europe (EU Member States and Horizon 2020 Associated Countries) and beyond.



COFUND

offering additional funding to regional, national and international programmes for research training and career development. COFUND programmes encourage the movement of researchers across borders and provide good working conditions. The scheme can support doctoral and fellowship programmes.

5 different MSC Actions

Host-driven:



ITN

bringing together universities, research institutes and other sectors from across the world to train researchers to doctoral level. Competitively selected joint research training and/or doctoral programmes are supported, which are implemented by European partnerships of universities, research institutions, and non-academic organisations.



COFUND

offering additional funding to regional, national and international programmes for research training and career development. COFUND programmes encourage the movement of researchers across borders and provide good working conditions. The scheme can support doctoral and fellowship programmes.

RISE



supporting short-term mobility of research and innovation staff of all career levels, including also administrative and technical staff. It is open to partnerships of universities, research institutions, and non-academic organisations both within and beyond Europe. In worldwide partnerships, academia-to-academia exchanges are permitted.

CSA:

NIGHT

Europe-wide public event to stimulate interest in research careers, especially among young people. The activities are focused on the general public and might take various forms such as hands-on experiments, science shows, debates, competitions or quizzes. The NIGHT takes place yearly, typically on the last Friday of the month of September.

Individual-driven:



IF

providing opportunities to researchers of any nationality to acquire and transfer new knowledge and to work on research and innovation in Europe (EU Member States and Horizon 2020 Associated Countries) and beyond.

RISE



supporting short-term mobility of research and innovation staff at all career levels, including also administrative and technical staff. It is open to partnerships of universities, research institutions, and non-academic organisations both within and beyond Europe. In worldwide partnerships, academia-to-academia exchanges are permitted.

5 different MSC Actions

Host-driven:



ITN

bringing together universities, research institutes and other sectors from across the world to train researchers to doctoral level. Competitively selected joint research training and/or doctoral programmes are supported, which are implemented by European partnerships of universities, research institutions, and non-academic organisations.



COFUND

offering additional funding to regional, national and international programmes for research training and career development. COFUND programmes encourage the movement of researchers across borders and provide good working conditions. The scheme can support doctoral and fellowship programmes.



RISE

supporting short-term mobility of research and innovation staff of all career levels, including also administrative and technical staff. It is open to partnerships of universities, research institutions, and non-academic organisations both within and beyond Europe. In worldwide partnerships, academia-to-academia exchanges are permitted.

CSA:

NIGHT

Europe-wide public event to stimulate interest in research careers, especially among young people. The activities are focused on the general public and might take various forms such as hands-on experiments, science shows, debates, competitions or quizzes. The NIGHT takes place yearly, typically on the last Friday of the month of September.

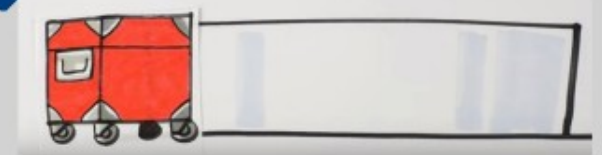
Individual-driven:



IF

providing opportunities to researchers of any nationality to acquire and transfer new knowledge and to work on research and innovation in Europe (EU Member States and Horizon 2020 Associated Countries) and beyond.

NIGHT



Europe-wide public event to stimulate interest in research careers, especially among young people. The activities are focused on the general public and might take various forms such as hands-on experiments, science shows, debates, competitions or quizzes. The NIGHT takes place yearly, typically on the last Friday of the month of September.

5 different MSC Actions

Host-driven:



ITN

bringing together universities, research institutes and other sectors from across the world to train researchers to doctoral level. Competitively selected joint research training and/or doctoral programmes are supported, which are implemented by European partnerships of universities, research institutions, and non-academic organisations.



COFUND

offering additional funding to regional, national and international programmes for research training and career development. COFUND programmes encourage the movement of researchers across borders and provide good working conditions. The scheme can support doctoral and fellowship programmes.



RISE

supporting short-term mobility of research and innovation staff of all career levels, including also administrative and technical staff. It is open to partnerships of universities, research institutions, and non-academic organisations both within and beyond Europe. In worldwide partnerships, academia-to-academia exchanges are permitted.

CSA:

NIGHT

Europe-wide public event to stimulate interest in research careers, especially among young people. The activities are focused on the general public and might take various forms such as hands-on experiments, science shows, debates, competitions or quizzes. The NIGHT takes place yearly, typically on the last Friday of the month of September.

Individual-driven:



IF

providing opportunities to researchers of any nationality to acquire and transfer new knowledge and to work on research and innovation in Europe (EU Member States and Horizon 2020 Associated Countries) and beyond.



IF

providing opportunities to researchers of any nationality to acquire and transfer new knowledge and to work on research and innovation in Europe (EU Member States and Horizon 2020 Associated Countries) and beyond

5 different MSC Actions

Host-driven:



ITN

bringing together universities, research institutes and other sectors from across the world to train researchers to doctoral level. Competitively selected joint research training and/or doctoral programmes are supported, which are implemented by European partnerships of universities, research institutions, and non-academic organisations.



COFUND

offering additional funding to regional, national and international programmes for research training and career development. COFUND programmes encourage the movement of researchers across borders and provide good working conditions. The scheme can support doctoral and fellowship programmes.

RISE



supporting short-term mobility of research and innovation staff of all career levels, including also administrative and technical staff. It is open to partnerships of universities, research institutions, and non-academic organisations both within and beyond Europe. In worldwide partnerships, academia-to-academia exchanges are permitted.

CSA:

NIGHT

Europe-wide public event to stimulate interest in research careers, especially among young people. The activities are focused on the general public and might take various forms such as hands-on experiments, science shows, debates, competitions or quizzes. The NIGHT takes place yearly, typically on the last Friday of the month of September.

Individual-driven:



IF

providing opportunities to researchers of any nationality to acquire and transfer new knowledge and to work on research and innovation in Europe (EU Member States and Horizon 2020 Associated Countries) and beyond.

5 different MSC Actions

Host-driven:



ITN

Bringing together universities, research institutes and other sectors from across the world to train researchers to doctoral level. Competitively selected joint research training and/or doctoral programmes are supported, which are implemented by European partnerships of universities, research institutions, and non-academic organisations.



COFUND

Offering additional funding to regional, national and international programmes for research training and career development. COFUND programmes encourage the movement of researchers across borders and provide good working conditions. The scheme can support doctoral and fellowship programmes.

RISE



Supporting short-term mobility of research and innovation staff of all career levels, including also administrative and technical staff. It is open to partnerships of universities, research institutions, and non-academic organisations both within and beyond Europe. In worldwide partnerships, academia-to-academia exchanges are permitted.

CSA:

NIGHT



Europe-wide public event to stimulate interest in research careers, especially among young people. The activities are focused on the general public and might take various forms such as hands-on experiments, science shows, debates, competitions or quizzes. The NIGHT takes place yearly, typically on the last Friday of the month of September.

Individual-driven:



IF

Providing opportunities to researchers of any nationality to acquire and transfer new knowledge and to work on research and innovation in Europe (EU Member States and Horizon 2020 Associated Countries) and beyond.

The Individual Fellowships (IF) of the Marie Skłodowska-Curie Actions (MSCA)

Geneva, 15 March 2018

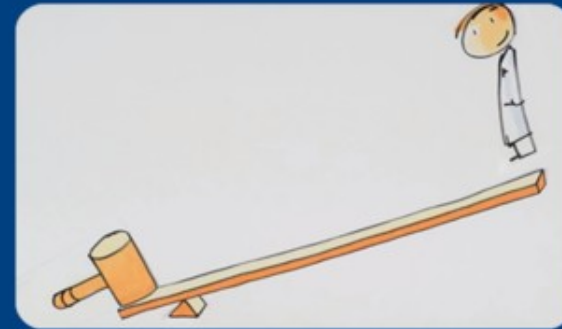
Sibylla Martinelli, Euresearch

Introduction



Individual Fellowships

(IF)



2 Types
of IF

For
whom?

What
is funded?

How
to apply?

Funded
Projects

2 Types of IF

European vs. Global Fellowship

European & Global Fellowships

- Individual, trans-national fellowships awarded to the most promising experienced researchers
- Focus on career development & training

Not just a regular research project!

European Fellowship

These Fellowships are held in the EU or associated countries and last for one to two years.

- open to researchers moving within Europe, as well as those coming in from other parts of the world
- can restart a research career after a break
- can help researchers coming back to Europe find a new position



Global Fellowship

These Fellowships fund positions outside EU for researchers based in the EU or associated countries.

- last between two and three years
- the researcher has to come back for one year to an organisation based in the EU or associated countries



European & Global Fellowships

can include secondments of 1-6 months!



For
whom ?

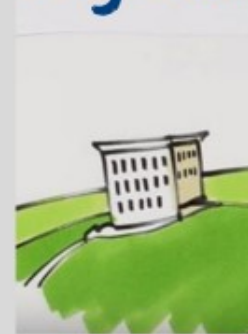
Experienced Researchers

- The IF is for experienced researchers from across the world
- Applicants need a doctoral degree or at least four years' full-time research experience by the time of the call deadline



Host

Possible hosts are Institutions active in research and research training: Universities, public and private research institutes, IEIOs & international Organisations



Mobility Rule



'The researcher shall not have resided or carried out their main activity in the country of their future host organisation for more than 12 month in the 3 years prior to the relevant deadline for submission of proposals.'

What is
funded ?

All Areas of Research

MSCA Fellows come from a wide variety of disciplines
- from physics to linguistics, and from health sciences
to mathematical modelling.

Evaluation is done in 8 panels:
(CHE, SOC, ECO, ENG, ENV, LIF, MAT, PHY)

Funding covers...



...living, mobility and family costs.

In addition, the EU contributes to the training, networking and research costs of the fellow, as well as to the management and indirect costs of the project. The grant is awarded to the host organisation.

Funding covers...

Researcher Unit Costs [€/month]:

Living Allowance: 4'650

Mobility Allowance: 600

Family Allowance: 500



Institutional Unit Costs [€/month]

Research, Training & Networking Costs: 800

Management and Indirect Costs: 650



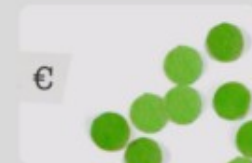
- Country correction coefficient applied to Living Allowance
- Most countries tax the income!

Researcher Unit Costs [€/month]:

Living Allowance: 4'650

Mobility Allowance: 600

Family Allowance: 500



Funding covers...

Researcher Unit Costs [€/month]:

Living Allowance: 4'650

Mobility Allowance: 600

Family Allowance: 500



Institutional Unit Costs [€/month]

Research, Training & Networking Costs: 800

Management and Indirect Costs: 650



- Country correction coefficient applied to Living Allowance
- Most countries tax the income!

Institutional Unit Costs [€/month]

Research, Training & Networking Costs: 800

Management and Indirect Costs: 650



Funding covers...

Researcher Unit Costs [€/month]:

Living Allowance: 4'650

Mobility Allowance: 600

Family Allowance: 500



Institutional Unit Costs [€/month]

Research, Training & Networking Costs: 800

Management and Indirect Costs: 650



- Country correction coefficient applied to Living Allowance
- Most countries tax the income!

Funding covers...

Example: Someone without family obligations is going to a host institution in Germany for 2 years.



Researcher costs			Institutional cost	
Living Allowance	Mobility Allowance	Family Allowance	Research, training and networking costs	Management and indirect costs
4650€ x 24 x 0.988	600€ x 24	n/a	800€ x 24	650€ x 24
110'260.80€	14'400€	0€	19'200€	15'600€

Total Researcher Costs: €124'660.8

Total Institutional Costs: €34'800

Total: €159'460.8

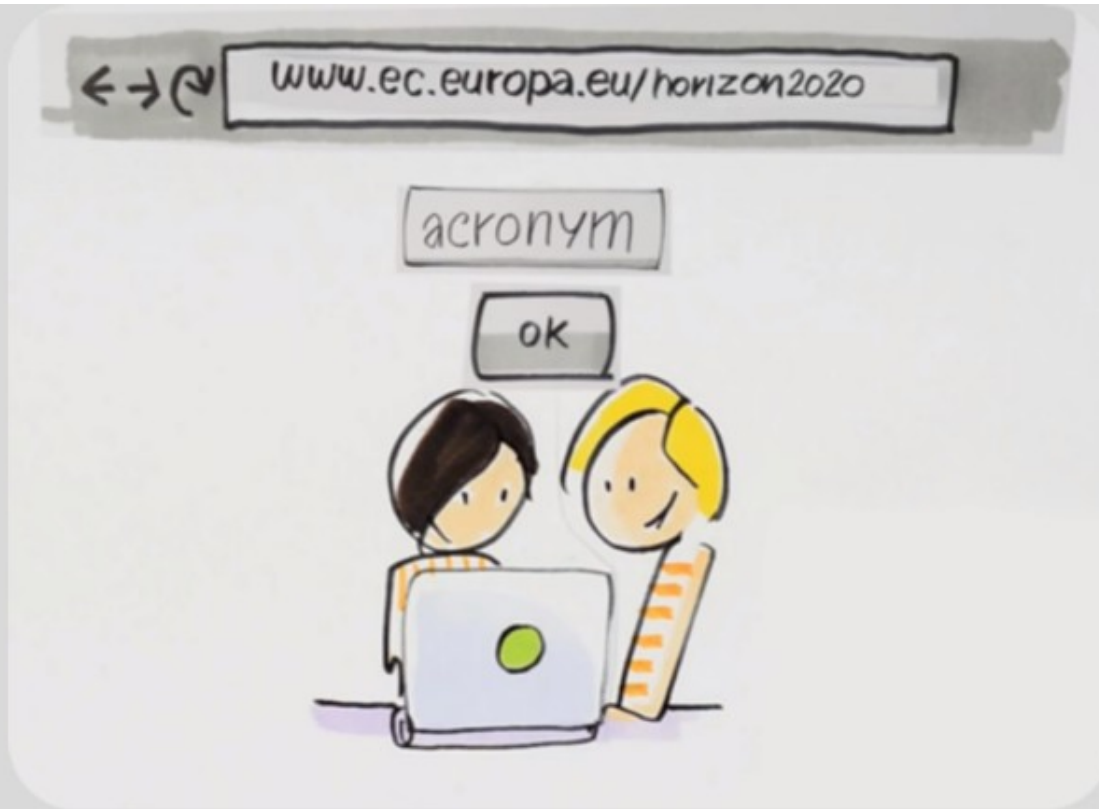
How to
apply ?

How to get started?

Calls are published on the Participant Portal, the single-entry point for research and innovation programmes run by the EU.



<http://ec.europa.eu/research/participants/portal/desktop/en/opportunities/index.html>



<http://ec.europa.eu/research/participants/portal/desktop/en/opportunities/index.html>

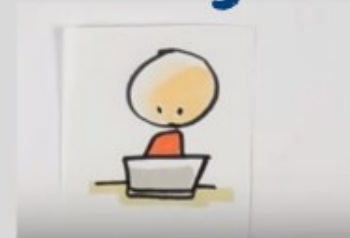
How to get started?

The Participant Portal will guide you through the process of preparing and submitting a proposal.

How to apply?

You submit a research proposal, including your CV.

The proposal is usually written jointly by the researcher and the chosen host organisation(s).



How to apply?

All necessary information and a template can be found on the Participant Portal:



<https://ec.europa.eu/research/participants/portal/desktop/en/opportunities/h2020/topics/mca-if-2018.html>

RESEARCH & INNOVATION
Participant Portal

European Commission > Research & Innovation > Participant Portal > Opportunities

HOME FUNDING OPPORTUNITIES HOW TO PARTICIPATE PROJECTS & RESULTS EXPERTS SUPPORT LOGIN REGISTER

EU Programmes 2014-2020

search topics

updates

Calls

H2020

3rd Health Programme

Asylum, Migration and Integration Fund

Consumer Programme

COSME

European Statistics Programme

Hercules III Programme

Internal Security Fund - Borders

Internal Security Fund - Police

Justice Programme

Pilot Projects & Preparatory Actions

Promotion of Agricultural Products

Research Fund for Coal & Steel

Horizon 2020

Horizon 2020
Pillar: Excellent Science
Work Programme Part: H2020-2018-2020
Work Programme Part: Marie Skłodowska-Curie actions
Call : H2020-MSCA-IF-2018

H2020 website

Call budget overview

TOPIC : Individual Fellowships

Topic identifier: MSCA-IF-2018
Publication date: 27 October 2017

Types of action: MSCA-IF-GF Global Fellowships
MSCA-IF-EF-ST Standard European Fellowships
MSCA-IF-EF-SE Society and Enterprise panel
MSCA-IF-EF-RJ Reintegration panel
MSCA-IF-EF-CAR Career Restart panel

DeadlineModel: single-stage
Planned opening date: 12 April 2018
Deadline: 12 September 2018 17:00:00
Time Zone : (Brussels time)

Topic Description + More

Objective:
The goal of the Individual Fellowships is to enhance the creative and innovative potential of experienced researchers, wishing to diversify their individual competence in terms of skill acquisition through

Topic conditions and documents + More

1. **Eligible countries:** described in [Annex A of the Work Programme](#).
A number of non-EU/non-Associated Countries that are not automatically eligible for funding have made specific provisions for making funding available for their participants in Horizon 2020 projects. See the

<https://ec.europa.eu/research/participants/portal/desktop/en/opportunities/h2020/topics/msca-if-2018.html>

National Contact Points

The network of National Contact Points (NCPs) is the main structure to provide guidance, practical information and assistance on all aspects of participation in Horizon 2020. NCPs are also established in many **non-EU** and **non-associated** countries ("third countries").

Search for:

Select the country -----Member states----- Austria Belgium	All functions Coordinator Legal and Financial SMEs	SEARCH
Sort by <input type="radio"/> Country <input checked="" type="radio"/> Contact name <input type="radio"/> Most recent <input type="radio"/> Organisation		

http://ec.europa.eu/research/participants/portal/desktop/en/support/national_contact_points.html

Research Enquiry Service

Research Enquiry Service. Ask your questions about any aspect of European research in general - and the EU Research Framework Programmes in particular.

Research Enquiry Service

Do you have a question about research in Europe? Would you like to know more about FP7 and Horizon 2020, the EU's main research funding instruments?

Are you looking for information on calls for research proposals?

Please use the form below to submit your question. You can also check our [FAQs](#); they contain a lot of useful information.

If your question is about a call for proposals, please submit your query at least two weeks before the respective call deadline, to allow us enough time to answer.

The helpdesk does not provide help on the use of the IT systems of the Participant Portal, e.g. forgotten passwords, access rights and roles, technical aspects of submission of proposals or reports etc. For such questions please contact the [IT helpdesk](#).



(*) = fields you must fill in

Gender

First name*

Last name*

E-mail address*

Confirm E-mail*

Nationality*

Country of residence*

Organisation name*

A service provided by the
Europe Direct Contact Centre



General questions are answered quickly by Europe Direct while more specialised questions are forwarded to the relevant people in the European Commission, logged and their status tracked to ensure a reply.

<http://ec.europa.eu/research/index.cfm?pg=enquiries>

Funded Projects



EMIGRATE

Project ID: 749463

Funded under:

[H2020-EU.1.3.2. - Nurturing excellence by means of cross-border and cross-sector mobility](#)

Exploring Microbial networking in pesticides biodeGRAdation: novel inocula and biocatalysts for biodepuration of agro-industrial Effluents

From 2017-07-01 to 2019-06-30, ongoing project

Project details

Total cost: EUR 152 653,20	Topic(s): MSCA-IF-2016 - Individual Fellowships
EU contribution: EUR 152 653,20	Call for proposal: H2020-MSCA-IF-2016 See other projects for this call
Coordinated in: Greece	Funding scheme: MSCA-IF-EF-RI - RI – Reintegration panel

Objective

Pesticides constitute priority pollutants for natural resources. Microbes, mostly in the form of microbial consortia are pivotal in the in situ pesticide biodegradation. EMIGRATE aims to investigate the complex interactions driving the coherence and biodegradation capacity of natural bacterial consortia, and through this, enable the production of biotechnological and bioengineering tools for novel environmental clean-up strategies. A microbial consortium degrading the fungic...



Coordinator

PANEPISTIMIO THESSALIAS
ARGONAFTON FILELLINON
38221 VOLOS
Greece

Greece



EU contribution: EUR 152 653,20

Activity type: Higher or Secondary Education Establishments

[Contact the organisation](#)



Voic

Projec

Funder

[H2020-](#)

Voices of Be Netherlands

From 2017-09-01

Project deta

Total cost: EUR 177 598,80
EU contributi EUR 177 598,80
Coordinated i Netherlands

Objective

Youth radicalizatio carry important ir educational conte by youth. In addit words and actions

Coordinator

UNIVERSITEIT LE
RAPENBURG 7C
2311 EZ LEIDE
Netherlands

Activity type:

[Contact the org](#)



Voices of Belonging

Project ID: 752550

Funded under:

[H2020-EU.1.3.2. - Nurturing excellence by means of cross-border and cross-sector mobility](#)

Voices of Belonging: Minority Identities, Language and Education in the Netherlands

From 2017-09-01 to 2019-08-31, ongoing project

Project details

Total cost:

EUR 177 598,80

EU contribution:

EUR 177 598,80

Coordinated in:

Netherlands

Topic(s):

[MSCA-IF-2016 - Individual Fellowships](#)

Call for proposal:

H2020-MSCA-IF-2016 [See other projects for this call](#)

Funding scheme:

MSCA-IF-EF-CAR - CAR - Career Restart panel

Objective

Youth radicalization is potential triggered by a sense of disconnect from society, and experiences of belonging carry important implications for youth identity formation. Language ideologies, policies, and practices in educational contexts send messages for youth regarding their belonging and/or value in society: the voices heard by youth. In addition, youth communicate their sense of belonging and the belonging of others through their words and actions, including their lang...

Coordinator

UNIVERSITEIT LEIDEN
RAPENBURG 70
2311 EZ LEIDEN
Netherlands

Netherlands

EU contribution: EUR 177 598,80

Activity type: Higher or Secondary Education Establishments

[Contact the organisation](#)

Success Stories

Can be found here:

https://ec.europa.eu/research/mariecurieactions/resources/success-stories_en

Success Stories
Related to Marie Skłodowska Curie Actions

- Thinking big: Czech success story**
SciMPro is a COPURE Marie Curie project, a regional grant programme backed by European funding set up to attract skilled researchers to the South Moravian Region.
Published on 09/03/2017
- Let the children roam free**
German scientist, Michaela Schmidt, believes that her findings could change our understanding of childhood asthma and lead to new treatments for the potentially fatal condition.
Published on 21/03/2017
- Getting rid of weeds: Bins or pesticides?**
Peter Tóth aimed at "understanding the broomrape 'language'" and finding out how they involuntarily communicate with their natural enemy, the *Phytomyza Chelidoniumis*.
Published on 24/03/2017
- More sugar, less cancer**
Stine Wålenga is helping to pioneer a new treatment that could lead to a breakthrough in the fight against brain cancer.
Published on 20/03/2017
- Tackling food quality and safety globally**
An international EU-funded partnership is leading the way in food quality and safety.
Published on 20/03/2017
- Radiography of the Past**
The Marie Curie Industry-Academia Partnerships and Pathways project SHROUNDS studies "non-destructive" approaches to complex archaeological sites.
Published on 20/03/2017

Success Stories

Related to Marie Skłodowska-Curie Actions



Thinking big: Czech success story

SoMoPro is a COFUND Marie Curie project, a regional grant programme backed by European funding set up to attract skilled researchers to the South Moravian Region.

Published on 04/01/2018



Let the children roam free

German scientist, Michaela Schedel, believes that her findings could change our understanding of childhood asthma and lead to new treatments for the potentially fatal condition.

Published on 21/12/2017



Getting rid of weeds: flies or pesticides?

Peter Tóth aimed at "understanding the broomrapes' language" and finding out how they involuntarily communicate with their natural enemy, the *Phytomyza Orobanchia* flies.

Published on 21/12/2017



More sugar, less cancer

Milo Malanga is helping to pioneer a new treatment that could lead to a breakthrough in the fight against brain cancer.

Published on 20/12/2017



Tackling food quality and safety genetically

An international EU-funded partnership is leading the way in food quality and safety.

Published on 20/12/2017



Radiography of the Past

The Marie Curie Industry-Academia Partnerships and Pathways project RADIO-PAST, studies "non-destructive" approaches to complex archaeological sites.

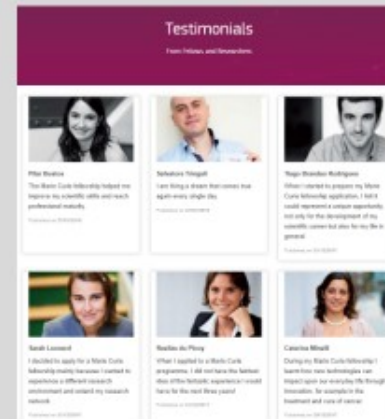
Published on 20/12/2017

SS-

Testimonials

Can be found here:

https://ec.europa.eu/research/mariecurieactions/resources/testimonials_en



Testimonials

From Fellows and Researchers



Pilar Bustos

The Marie Curie fellowship helped me improve my scientific skills and reach professional maturity.

Published on 27/01/2018



Salvatore Tringali

I am living a dream that comes true again every single day.

Published on 27/01/2018



Tiago Brandao Rodrigues

When I started to prepare my Marie Curie fellowship application, I felt it could represent a unique opportunity, not only for the development of my scientific career but also for my life in general.

Published on 21/12/2017



Sarah Leonard

I decided to apply for a Marie Curie fellowship mainly because I wanted to experience a different research environment and extend my research network.

Published on 21/12/2017



Raelize du Plooy

When I applied to a Marie Curie programme, I did not have the faintest idea of the fantastic experience I would have for the next three years!

Published on 21/12/2017



Caterina Minelli

During my Marie Curie fellowship I learnt how new technologies can impact upon our everyday life through innovation, for example in the treatment and cure of cancer.

Published on 20/12/2017

The Individual Fellowships (IF) of the Marie Skłodowska-Curie Actions (MSCA)

Geneva, 15 March 2018

Sibylla Martinelli, Euresearch

Introduction



Further Information



Timeline

Support
& Help

Euresearch

Timeline



MSCA 2018 Calls

ITN

open: 12 Oct 17
closed: 17 Jan 18

RISE

open: 22 Nov 17
closed: 21 March 18

IF

open: 12 April 18
closed: 12 Sept 18

COFUND

open: 12 April 18
closed: 27 Sept 18



ITN

open: 12 Oct 17

closed: 17 Jan 18

RIS

18

RISE

open
close

open: 22 Nov 17

closed: 21 March 18

IF

op
cl

open: 12 April 18

closed: 12 Sept 18

COFUND

open: 12 April 18

closed: 27 Sept 18

MSCA 2018 Calls

ITN

open: 12 Oct 17
closed: 17 Jan 18

RISE

open: 22 Nov 17
closed: 21 March 18

IF

open: 12 April 18
closed: 12 Sept 18

COFUND

open: 12 April 18
closed: 27 Sept 18



Individual Fellowships

Call Opening:

12 April 2018

Call Deadline:

12 September 2018

Eligibility check:

September 2018

Evaluation:

October - November 2018

Launch Grant preparation:

1st half February 2018

Starting dates:

March 2019 - September 2020



Support
& Help

Important Documents



MSCA Work Programme 2018-2020

£

MSCA Guides for Applicants
(per Action / per year)





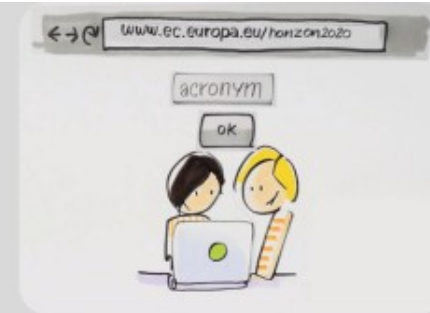
EN

Horizon 2020

Work Programme 2018-2020

3. Marie Skłodowska-Curie actions

Links



-Participant Portal:

<http://ec.europa.eu/research/participants/portal/desktop/en/home.html>

-Marie Skłodowska-Curie actions website:

<http://ec.europa.eu/research/mariecurieactions>

-EURAXESS: <http://ec.europa.eu/euraxess/>

-The European Commission's Horizon 2020 Enquiry service:

<http://ec.europa.eu/research/index.cfm?pg=enquiries>

-National Contact Points: http://ec.europa.eu/research/participants/portal/desktop/en/support/national_contact_points.html

-FAQ Blog: <http://mariecurieactions.blogspot.ch/>

Events 2018

- IF Webinar on 24 April
- IF Applicants' Training on 14 June in Berne
- IF Applicants' Training on 5 July in Geneva
- IF Prescreening Day on 5 September in Geneva



www.euresearch.ch/events

Euresearch

The Euresearch Network



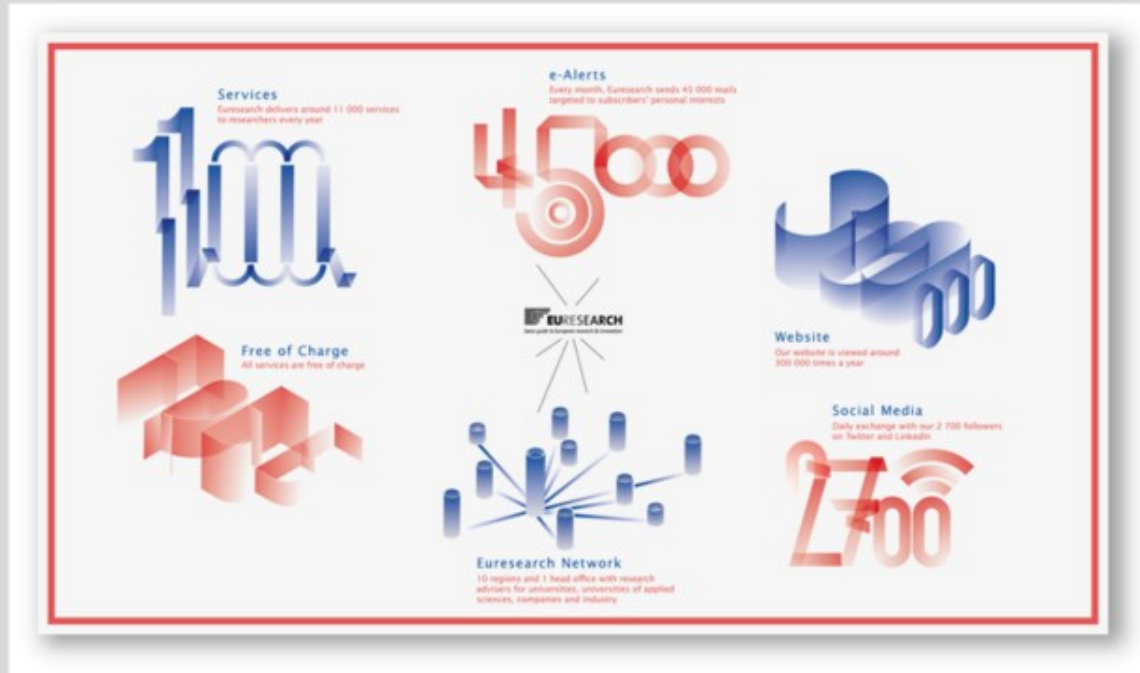
<https://www.euresearch.ch/en/about-euresearch/>

The Euresearch Network



We inform, we advise & we connect

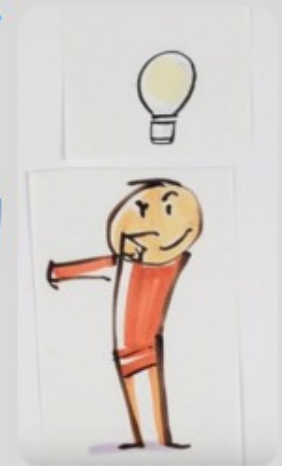
Euresearch Services



We inform, we advise & we connect

How to get started ?

- Profile yourself on the Euresearch Website:
<https://www.euresearch.ch/en/registration/>
- Check Euresearch and EC website regularly
- Use info channels offering automatic info feed (newsletter, social media, e-alerts)



Contact Details

MSCA Contact Points at Euresearch

Dr. Isabelle Spühler & Dr. Sibylla Martinelli

msca@euresearch.ch

031/ 380'60'11

www.euresearch.ch/contacts



Thank you!

The Individual Fellowships (IF) of the Marie Skłodowska-Curie Actions (MSCA)

Geneva, 15 March 2018

Sibylla Martinelli, Euresearch

Introduction

