



# Learning & Development @ CERN

# Learning & Development @ CERN



Training

Excellence

Knowledge

Expertise

Learning

Leadership

Teaching

Development

Motivation

Passion

Competencies

Coaching

# Learning & Development @ CERN





**RESEARCH  
EDUCATION**

Development  
Learning  
Training

**TECHNOLOGY  
COLLABORATION**

# Learning & Development @ CERN

WHY



Sponsored at the **highest level of CERN**, learning is positioned as a **strategic activity** for achieving the mission of the Organization

# Learning & Development goals

WHY

HIGHLY  
QUALIFIED AND  
MOTIVATED  
WORKFORCE

CORE &  
LEADERSHIP  
COMPETENCIES

CERN  
VALUES

COHERENT  
APPROACH

EQUITABLE  
ACCESS

# Which category of personnel can benefit from learning and development ?

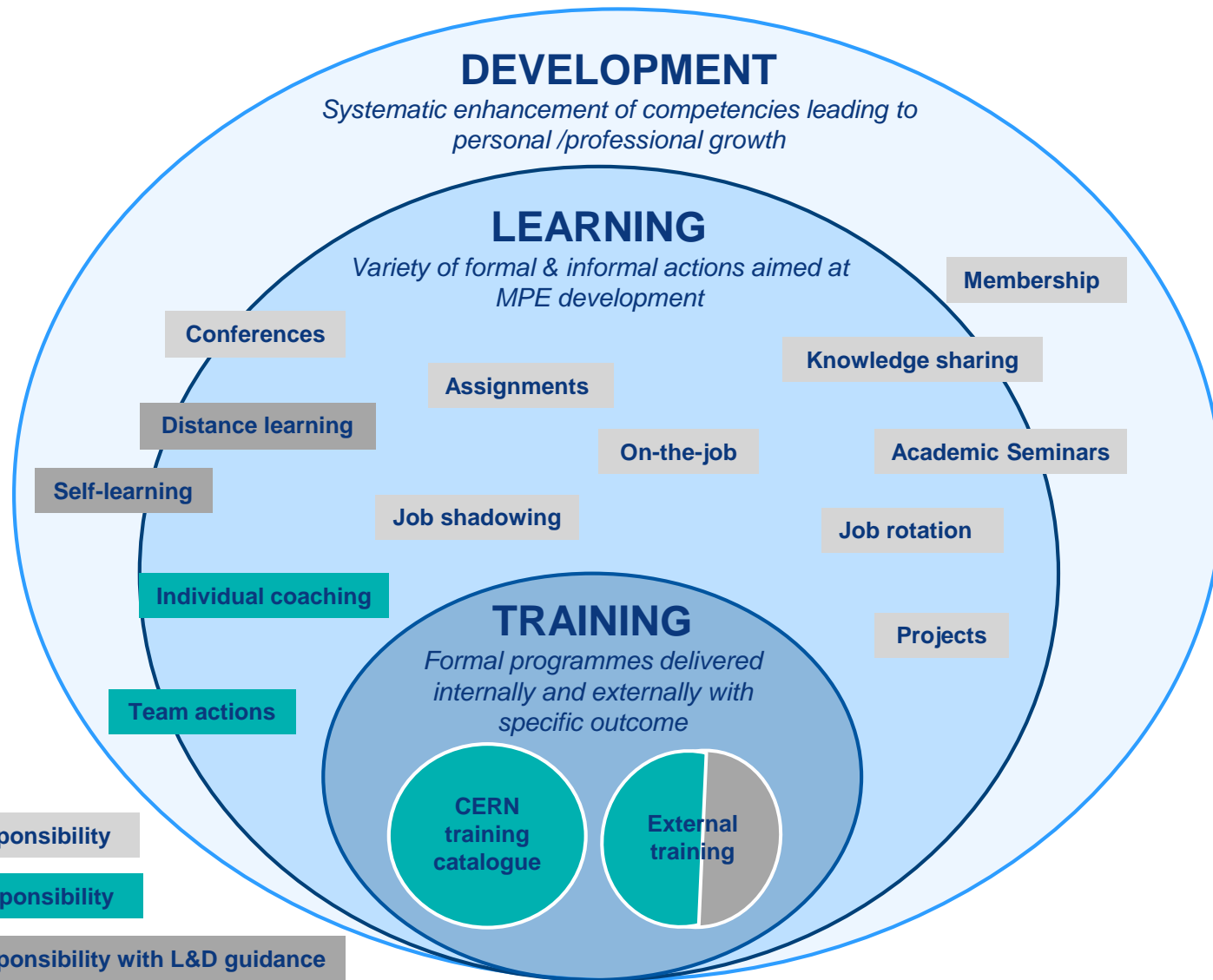
WHO



**All categories  
everybody can register**



# Diversity of learning opportunities **HOW**



# Learning priorities

HOW

## What does it mean ?

Mandatory to perform a function or a role in the Organization

AND / OR

Necessary to ensure a successful integration in the Organization and/or the local area

# Learning priorities

## What does it include?

- **Onboarding** programme
- **safety**-training and awareness programmes
- **technical** training improvement programmes
- **CERN office software** (EDH, HRT, etc)
- **basic language** training (English & French)
- **core leadership and supervisory** skills programmes
- **core communication** programmes
- **sensitization to diversity** issues in the workplace

# How to register ?

# FIRST OPTION

HOW

CERN Accelerating science

[Sign in](#) [Directory](#)



[About CERN](#)

[Students & Educators](#)

[Scientists](#)

[CERN community](#)

[English](#) [Français](#)



## CERN Updates

[Combatting cancer in challenging environments](#)

9 November

[Marie Skłodowska-Curie: more alive today than ever](#)

7 November

[How much does a kilogram weigh?](#)

2 November

[Past updates >](#)

Search this site

Search

**CLOUD BANANA** CLOUD, 13/11/2011 00:00

[view image](#)

A banana plot from the CLOUD experiment showing several particles growing from trace



# How to register ?

# SECOND OPTION

HOW

CERN Home > FAP Department

Welcome Margot Lea Josepha MONTASSINE



EDH

EDH

[Home](#) | [Tasks](#) | [Search](#) | [News](#) | [Settings](#) | [Whats New](#) | [Statistics](#) | [About](#) | [Help](#) | [Logout](#)

## Tasks



Other Tasks



Absence Request



Access Request



Catalogue - CERN  
Stores



GSM Subscription  
Request /  
Modification



Inter Departmental  
Transfer (TID)



Material Request  
(Stores)



Official Travel  
Request



Purchase Requisition  
(DAI)



Shipping Request  
(Expedition)



Training: Classroom  
(CTA)



Training: Online (SIR)



Transport Request  
(CERN Site)



## Searches



Documents Created  
By Me



Documents To Sign  
By Me



Search Documents



Stored Searches



# Internal learning expertise

HOW



# Your contacts – HR Learning Experts

WHO



# Your DTO\*

WHO

## International Relations

**RCS** KNOORS Nathalie

**IR** FROMM Christina

## Director General Units

**DG** MEICHTRY Lynda

## Health & Safety and Environmental unit

**HSE** WIJNANDS Thijs

## Pension Fund

**PF** MARME Ghislaine

## Accelerators and Technology

**BE** MONTESINOS Eric

**EN** CAPATINA Ofelia  
(NICQUEVERT Bertrand)

**TE -  
ATS** HOBGEN Georgina

## Finance and Human Resources

**FAP** KLEM Doreen

**HR** CHOY Aurelie

**IPT** LEONARD Anne-Laure

**SMB** ANGELINI Veronique

## Research & Computing

**IT** KWIATEK Michal

**TH** KNOORS Nathalie

**EP** KNOORS Nathalie

**RCS** KNOORS Nathalie

\*DTO = Departmental Training Officer



WHO

YOU

**Personal  
+ Professional growth  
= EXCELLENCE**

**WHY**

**WHAT**

**HOW**

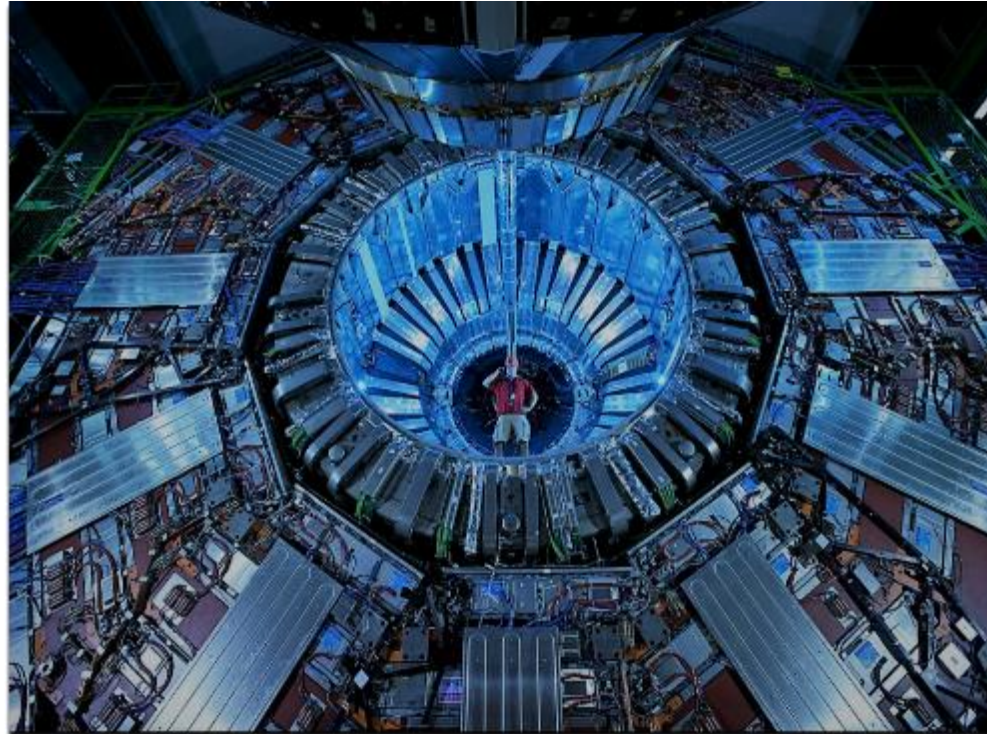
**me  
+ supervisor  
= PARTNERSHIP**

WHY

WHAT

HOW

# Ready to 'accelerate' your learning journey at CERN ?



**Thank you for your attention**