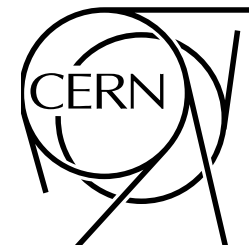
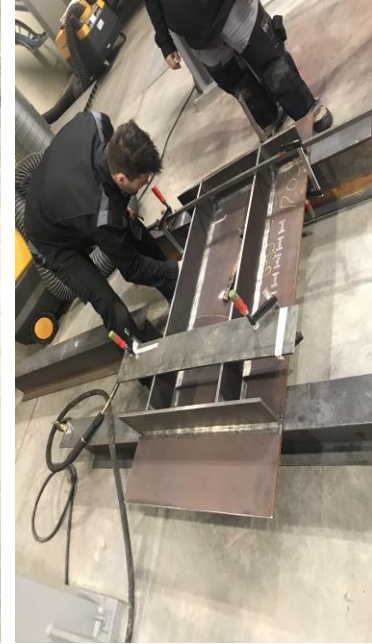
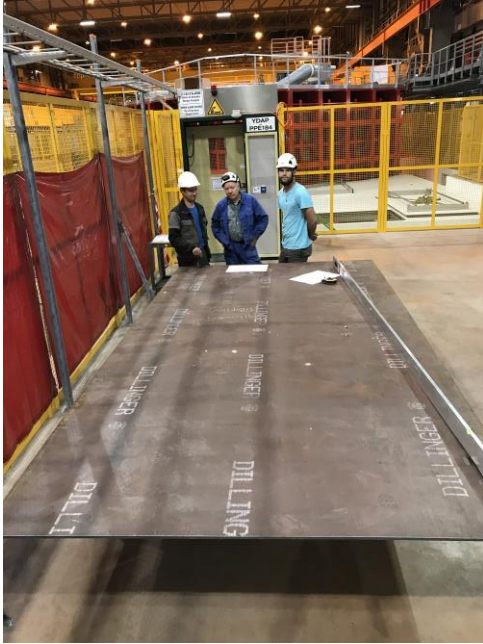


Cryostat warm structure destructive tests

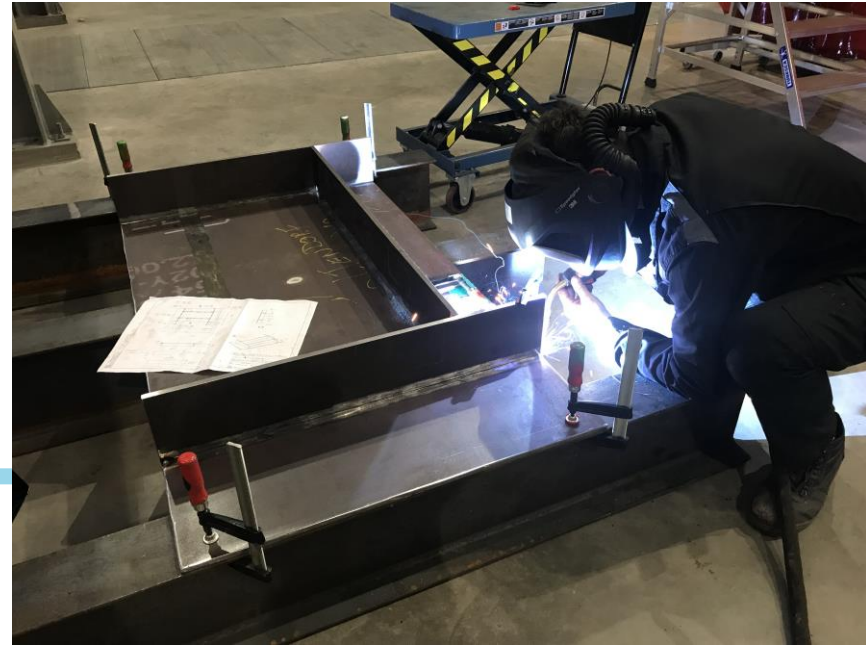
Dimitar MLADENOV - CERN EP/NU
LBNF Cryo Safety Panel Informal meeting
CERN, 30-31 January 2018



LBNF – Warm Skin - Tests



Welding tests



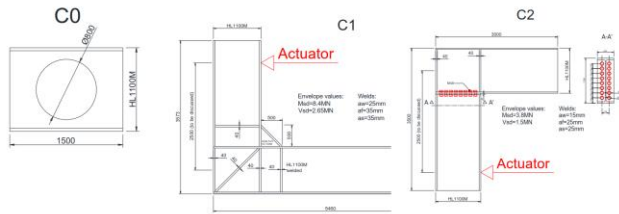
LBNF – Warm Skin - Tests



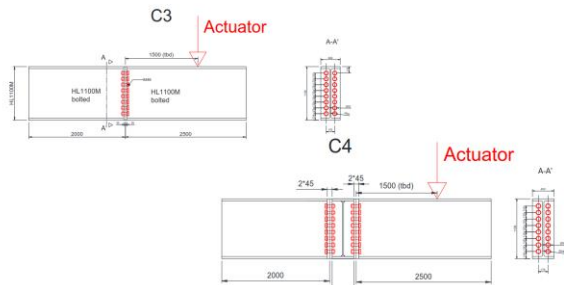
Loading tests

LBNF – Main Structure - Tests

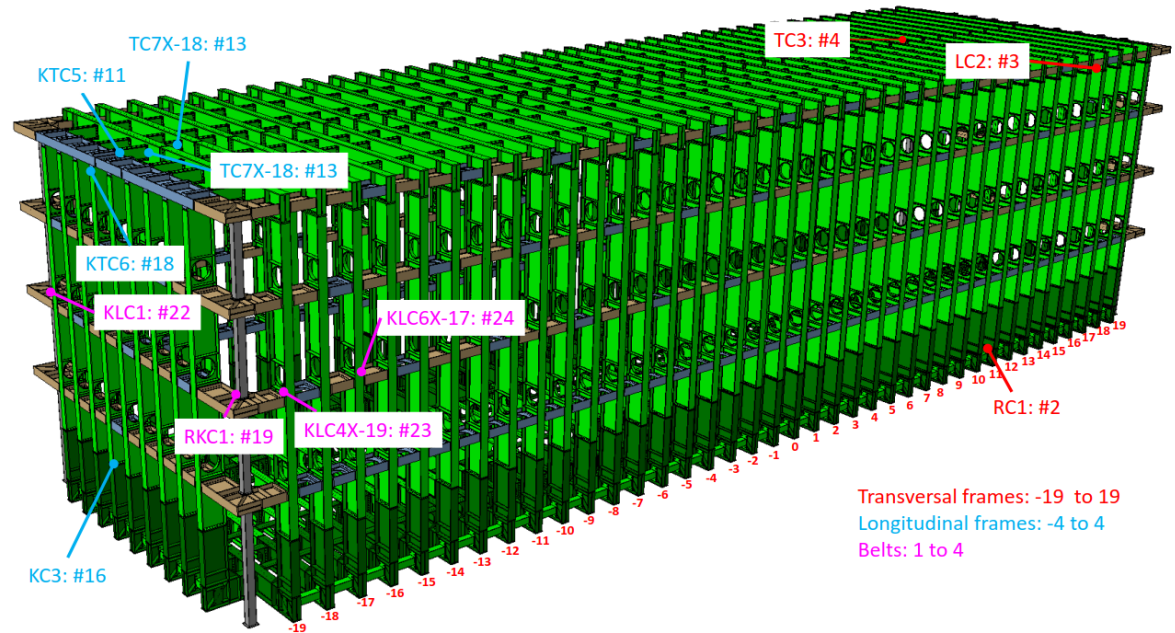
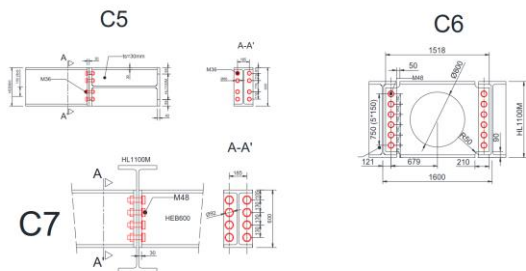
Geometries (being updated by UC)



Geometries (being updated by UC)

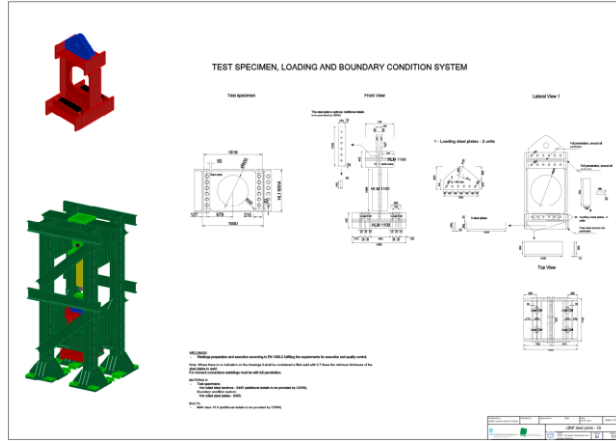
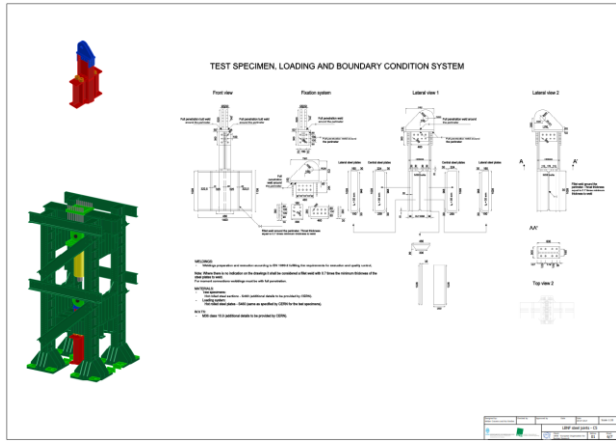
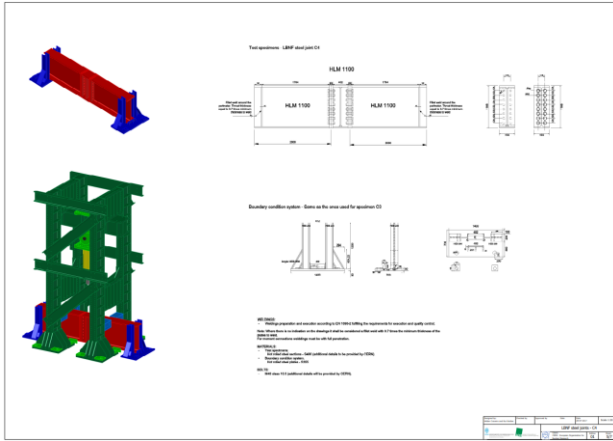
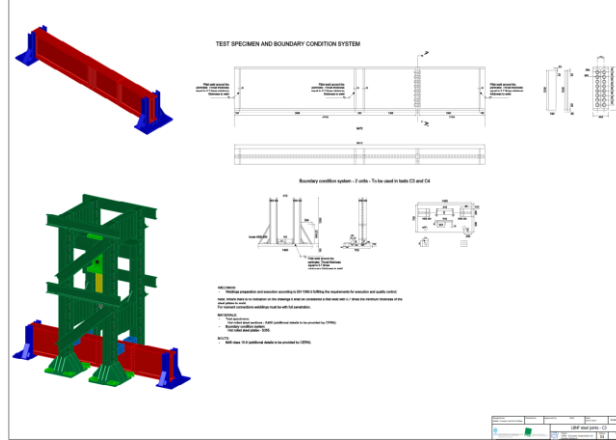
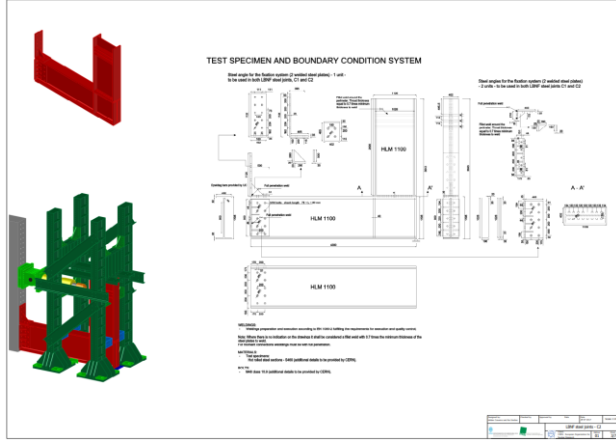
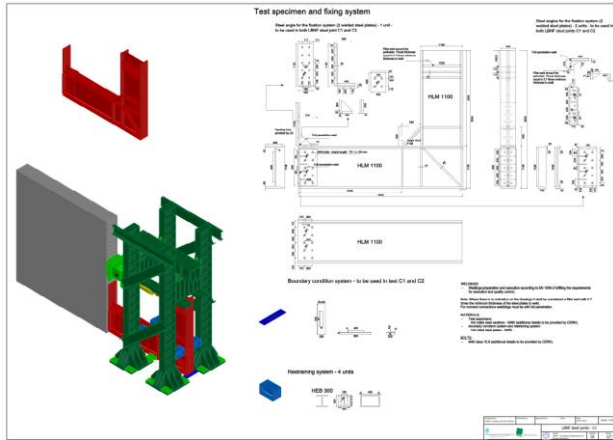


Geometries (being updated by UC)

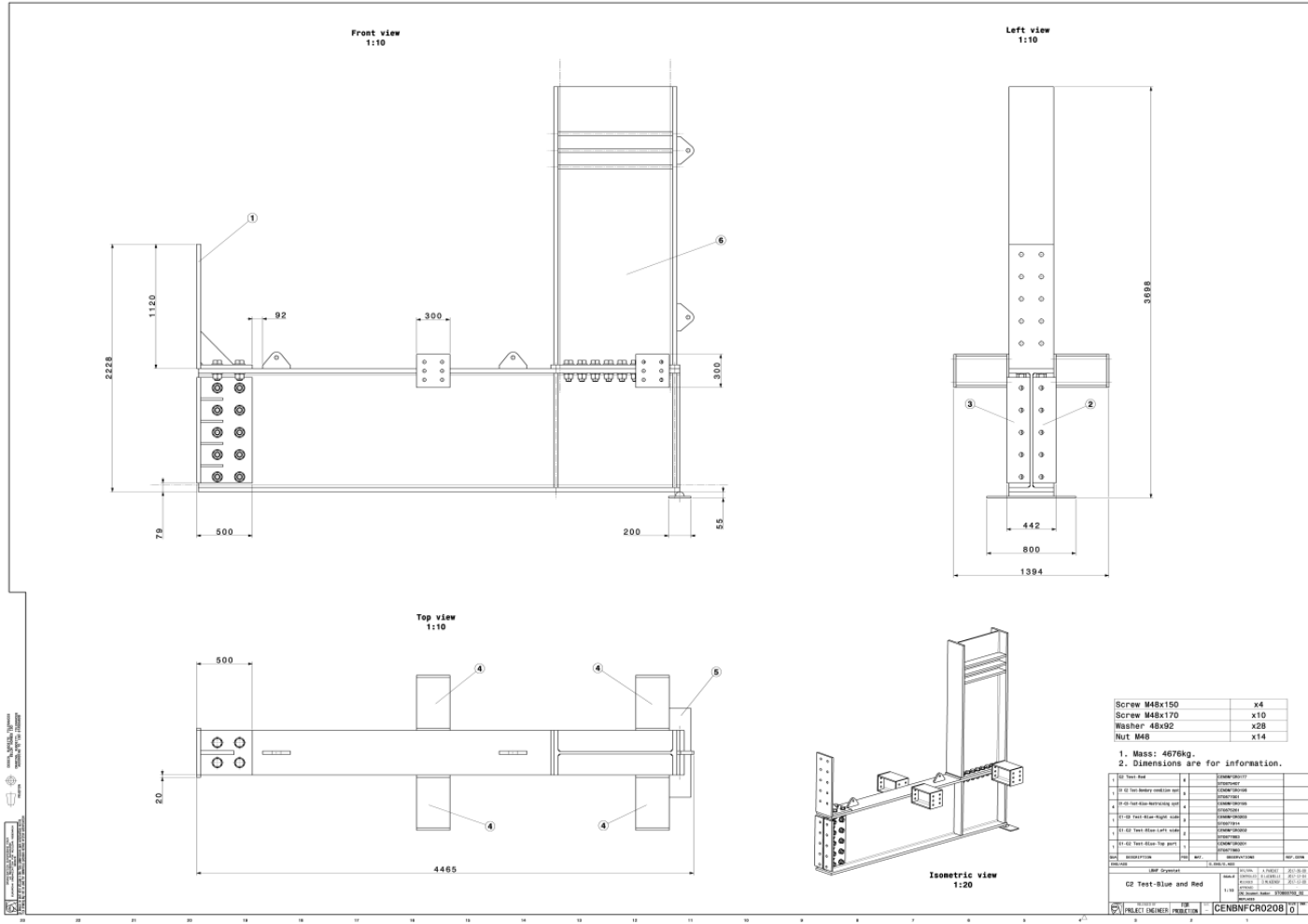


Transversal frames: -19 to 19
 Longitudinal frames: -4 to 4
 Belts: 1 to 4

LBNF – Main Structure - Tests



LBNF – Main Structure - Tests



LBNF – Main Structure - Tests



Thank you!