

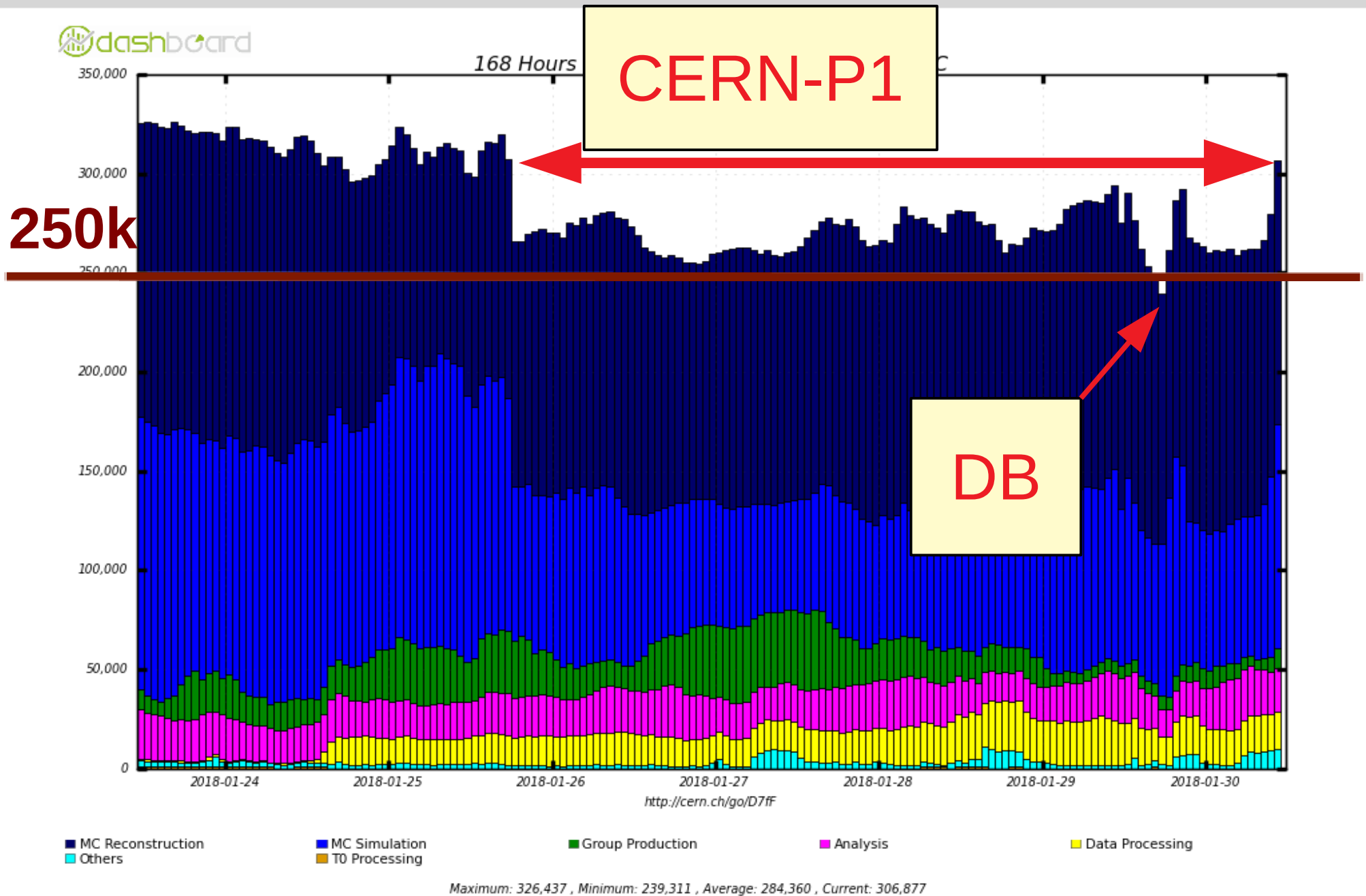
CRC/ADCoS report

Week: January 23 - 30

Petr Vokáč (CRC)

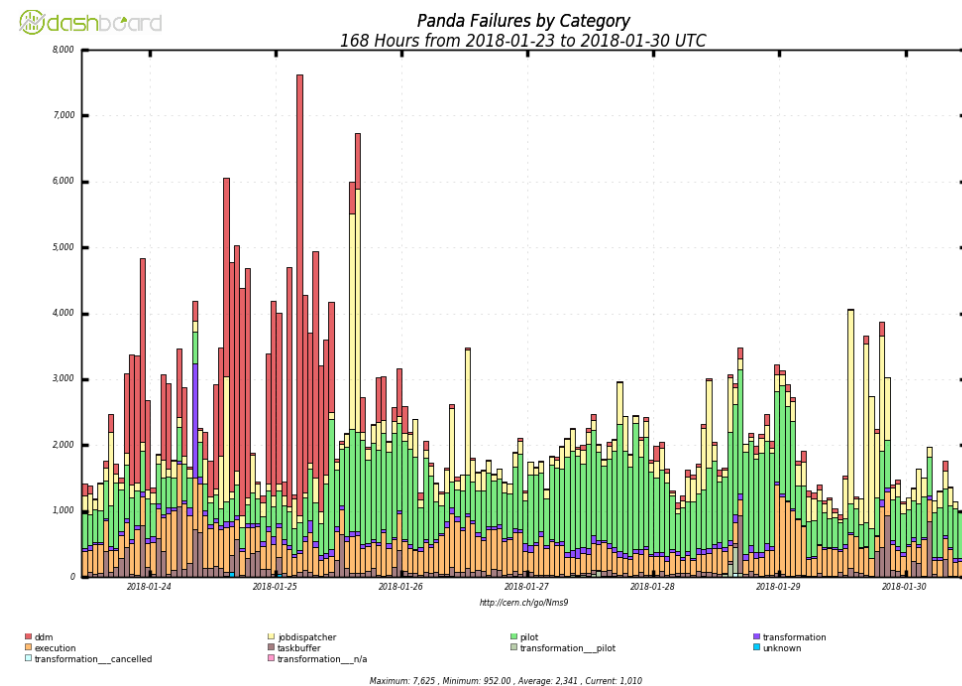
ADC Weekly meeting
30th July

Slots of running jobs



Production

- CERN machines reboot to apply kernel update
 - including critical services + wigner site on Wednesday
 - smooth – no major problems, services unavailable for few minutes
 - some of our services were in same availability zone
- CERN-P1 in downtime for cooling maintenance (~ 40k slots)
 - ES tests before downtime
 - switched back to grid+ES today
- WallClock issue – now fixed
 - jobs reporting wrong start time
 - protection implemented in aCT
- CERN database busy on Monday
 - slower rucio responses
 - communication with panda lost heartbeat



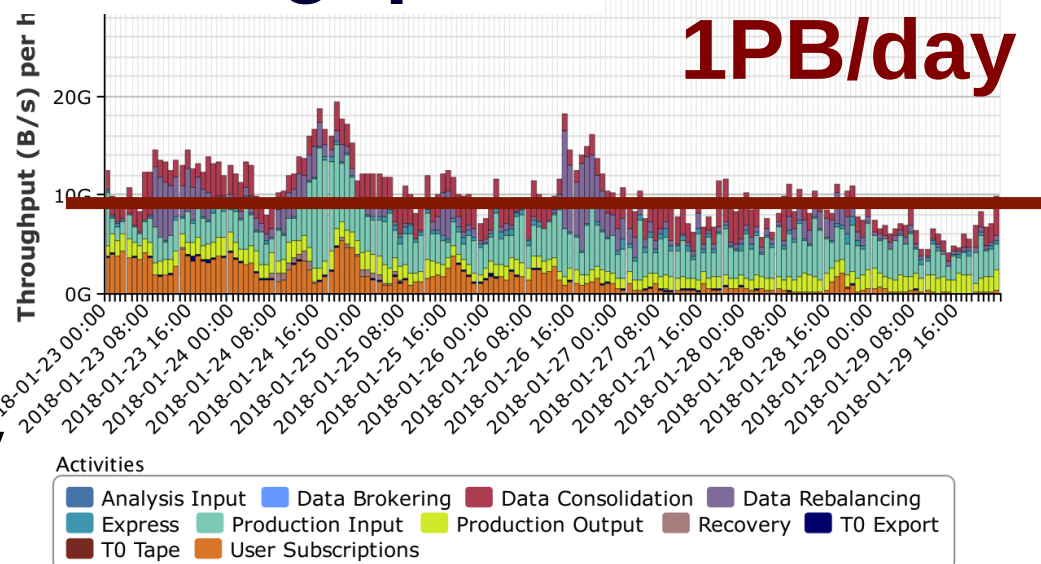
Data transfers & storage

- RAL FTS server issues
 - GGUS:133066,133092
 - started on Thursday with many queued requests for LUCILLE site – in downtime but not DDM blacklisted
 - still low transfer activity on Friday witch ~ 1M queued requests
 - jobs failing to transfer outputs
 - ND and IT cloud switched to CERN & BNL FTS
 - UK sites switched on Monday – AGIS bulk update UI not intuitive
 - problem with backend database
 - new production instance with clean db lcgft3.gridpp.rl.ac.uk

Throughput

input
30 00:00 UTC

1PB/day



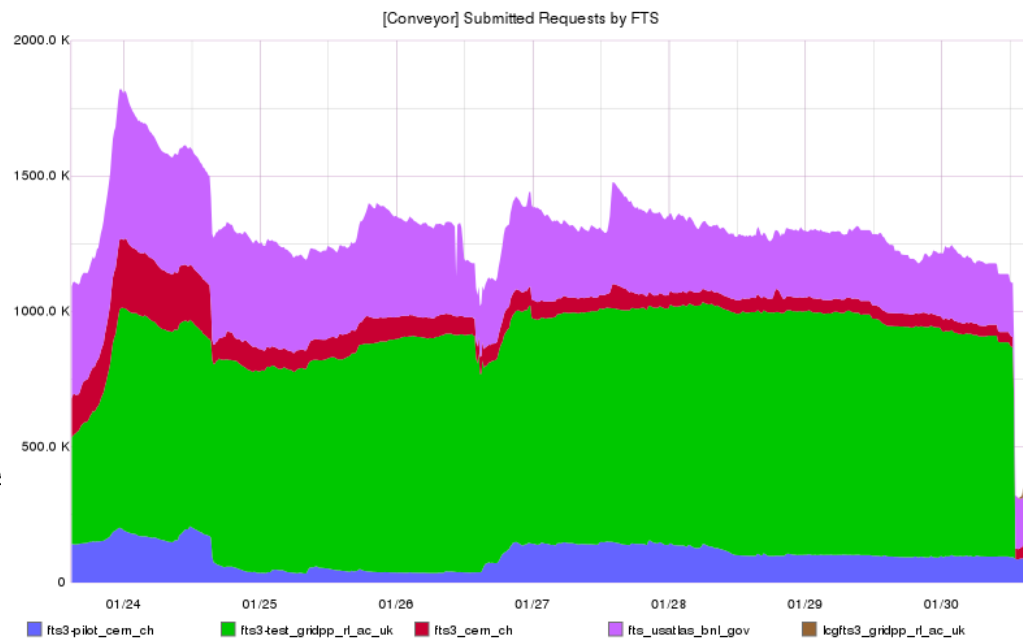
- RAL CASTOR

- dCache performance issues after building huge backlog caused deletion 600TB
- 15h to reindex database

Data transfers & storage

- RAL FTS server issues

- GGUS:133066,133092
- started on Thursday with many queued requests for LUCILLE site – in downtime but not DDM blacklisted
- still low transfer activity on Friday witch ~ 1M queued requests
- jobs failing to transfer outputs
- ND and IT cloud switched to CERN & BNL FTS
- UK sites switched on Monday – AGIS bulk update UI not intuitive
- problem with backend database
- new production instance with clean db lcgft3.gridpp.rl.ac.uk



- RAL CASTOR

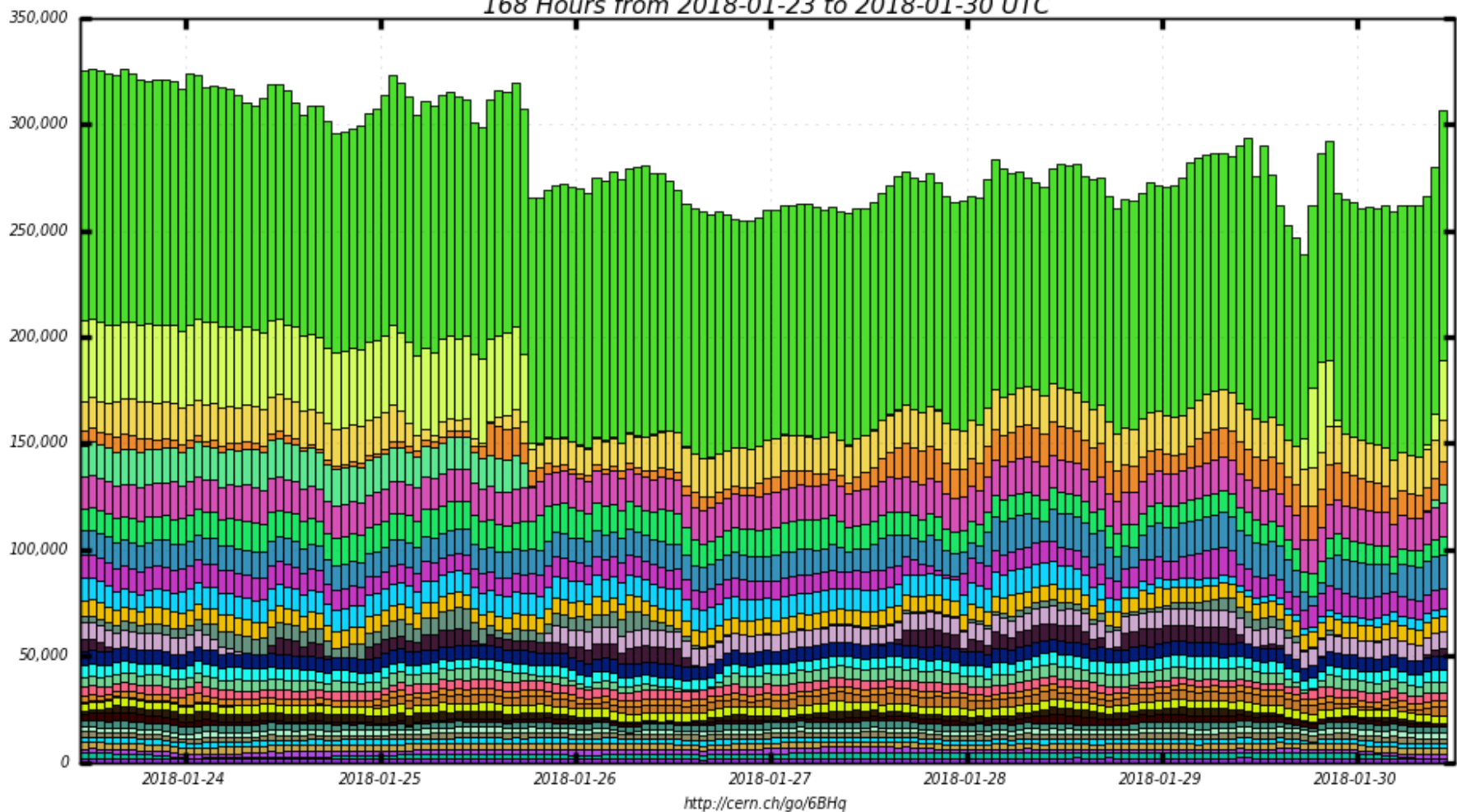
- performance issues after building huge backlog caused deletion 600TB
- 15h to reindex database

Data transfers & storage

- Tape buffers
 - currently no automatic transfers throttling
 - transfer failures & succeeds on retry
 - need manual DDM blacklisting if buffer become full
 - recent change in disk+tape replica storage policy
 - more transfers between sites
 - plan to develop automatic transfer based on information in rucio
- Dataset name length limit
 - rucio enforce convention by regex
 - enforced on whole name length
 - changed to enforce length without sub
 - AMI tags + tid + sub
 - sequence number reset to make names shorted
 - cycling-type with max 7 digits
 - ps2 database update fields with consistent length 255

BACKUP

Slots of Running Jobs 168 Hours from 2018-01-23 to 2018-01-30 UTC



- | | | | |
|-----------------------------|------------------------------|--------------------------|--------------------------|
| Rest | CERN-P1_DYNAMIC_MCORE_LOWMEM | CERN-PROD_TO_4MCORE | CERN-PROD-preprod_MCORE |
| CERN-P1_DYNAMIC_MCORE | BNL_PROD_MCORE | MWT2_MCORE | FZK-LCG2_UCORE |
| IN2P3-CC_MCORE | BOINC_MCORE | AGLT2_MCORE | HPC2N_MCORE |
| BU_ATLAS_Tier2_MCORE | LRZ-LMU_MUC_MCORE1 | SWT2_CPUB_MCORE | TOKYO_MCORE_ARC |
| SIGNET_MCORE | TRIUMF_MCORE_LOMEM | RRC-KI-T1_MCORE | CONNECT_ES_ODYSSEY_MCORE |
| DESY-HH_UCORE | RAL-LCG2-ECHO_MCORE | CA-SFU-T2_MCORE | LRZ-LMU_MCORE |
| UKI-NORTHGRID-MAN-HEP_MCORE | IAAS_MCORE | Taiwan-LCG2_MCORE | GRIF-IRFU_MCORE |
| CSCS-LCG2_MCORE | UNI-FREIBURG_MCORE | INFN-COSENZA-RECAS_MCORE | |

Maximum: 326,437 , Minimum: 239,311 , Average: 284,360 , Current: 306,877

