

2018 RD51 test beam

Three periods, 2 weeks in the first two (one of the in August), 1 week in the last one



SPS user schedule for 2018

schedule issue date: 07-Feb-2018

Version: 1.01 ■ LHC Exp. ■ PS/SPS Exp. ■ Other Exp. ■ INT Exp.

| | | Mar | | | Apr | | | Mai | | | Jun | | | Jul | | | Aug | | | Sep | | | Oct | | | Nov | | | Dec | | | | | | | | | | | | |
|------------|-------------|---------------------|----|-------------|------------------|---------------------|------------------|-----|--------------------|------------------|-----------------|----------------|---------------------------------|-----------------|---------------------|---------------|-----------|----------------|----------------|--------|-----------------|---------------|----------------|-----------------|--------------------|--------------------|---------------|------------------|--------------|------------|----------|---------------|--------|-------------|----------|----|----|----|----|----|----|
| Week | | 11 | 12 | 13 | 14 | 15 | 16 | 17 | 18 | 19 | 20 | 21 | 22 | 23 | 24 | 25 | 26 | 27 | 28 | 29 | 30 | 31 | 32 | 33 | 34 | 35 | 36 | 37 | 38 | 39 | 40 | 41 | 42 | 43 | 44 | 45 | 46 | 47 | 48 | 49 | 50 |
| Machine | | | | | | | | | | | | | | | | | | | | | | | | | August | | | 1 WEEK | | | | | | | | | | | | | |
| North Area | T2 - H2 | SPS & TT20 Setup 18 | | NA Setup 8 | HERD FIT 7 | NA62 GTK 7 | NA61 SHINE 14 | | Calice (Abul) 7 | TIC 7 | CMS HGCAL 14 | | ATLAS ZDC 7 | Calice (Abul) 7 | NA61 K BRG/V 7 | NA61 SHINE 21 | | AXIAL 7 | KLEVER 7 | EMMA 7 | CMS HGCAL 14 | | CMS HGCAL 14 | | Calice (Sdhal) 14 | HERD 7 | NA61 SHINE 7 | CMS HGCAL 14 | | NP02 2 | | NA61 SHINE 28 | | | | | | | | | |
| | T2 - H4 | SPS & TT20 Setup 18 | | NA Setup 8 | NA63 9 | CMS ECAL 7 | GIF RD51 14 | | NA64 Setup 7 | NA64 35 | | | CMS ECAL 7 | AIDA WP14 7 | SHIP Installation 7 | SHIP Muon 14 | | SHIP Chems 7 | GIF RD51 14 | | DeTau 7 | NP04 setup 7 | NP04 7 | CMS MTD 7 | NP04 14 | | CMS ECAL 7 | NP04 14 | | GIF RD51 7 | NP04 12 | RE29 DAMPC 7 | HERD 7 | ATLAS ZDC 7 | Calice 7 | | | | | | |
| | T4 - H6 | SPS & TT20 Setup 18 | | NA Setup 8 | Clic pio 7 | CMS Outer Tracker 9 | ATLAS ITK 14 | | ATLAS ITK Kartel 7 | RD42 7 | ALICE muons 7 | CERF 7 | CMS Outer Tracker / AIDA WP14 7 | Clic pio 7 | ATLAS HGTD 7 | ATLAS ITK 21 | | ATLAS AFP 14 | ATLAS ITK 14 | | ATLAS AFP 14 | ALICE muons 7 | RD42 7 | AIDA WP7 7 | ATLAS ITK Kartel 7 | ATLAS HGT Kartel 7 | CMS Tracker 7 | ATLAS Strip TA 7 | Chems 7 | | | | | | | | | | | | |
| | T4 - H8 | SPS & TT20 Setup 18 | | NA Setup 8 | TOTEM (+UA9) 9 | ATLAS HV-CMOS 7 | ATLAS HV-CMOS 14 | | LHCb 14 | ATLAS Tilecal 14 | ATLAS HV CMOS 7 | TOTEM (1008) 7 | ATLAS TRT 7 | LHCb 21 | | cryobea 7 | CMS ITK 7 | ALICE FOCAL 14 | TOTEM (1008) 7 | mu-e 7 | ATLAS HV CMOS 7 | FCCee 7 | TOTEM (1008) 7 | ATLAS HV CMOS 7 | CMS ITK 7 | LHCb 26 | | ATLAS Tilecal 14 | R2E (1008) 7 | HNX 14 | MUCLFN 7 | | | | | | | | | | |
| | T4 - K12 | SPS & TT20 Setup 18 | | NA Setup 8 | NA62 217 | | | | | | | | | | | | | | | | | | | | | | | | | | | | | | | | | | | | |
| | T6 - M2 | SPS & TT20 Setup 18 | | NA Setup 8 | NA58 COMPASS 217 | | | | | | | | | | | | | | | | | | | | | | | | | | | | | | | | | | | | |
| TT41 | AWAKE 21 | | | | AWAKE 21 | | | | AWAKE 21 | | | | AWAKE 21 | | | | | | | | | | | | | | | | | | | | | | | | | | | | |
| TT60 | HiradMat 14 | | | HiradMat 14 | | | HiradMat 14 | | | HiradMat 14 | | | HiradMat 14 | | | | | | | | | | | | | | | | | | | | | | | | | | | | |

For further information contact the PS/SPS-Coordinator. Email: Sps.Coordinator@cern.ch, Tel: +41 75 411 3845.

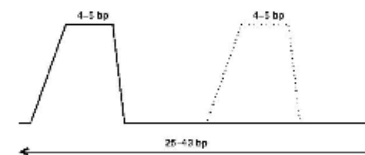
The latest version of the schedule are available here: <http://sps-schedule.web.cern.ch/sps-schedule/>

This schedule is synchronized with injector schedule v0.6.

No beam to the North Area during Technical Stops (TS), Coldex, UA9 and Machine Developments (MD).

For TS a RP cool down time is needed and will be announced in the days preceding the stop.

Submit your ISIEC at least 2 weeks before your allocated beam time using <https://ep-th-safety.web.cern.ch/isiec>



H4 activities.... interesting ,important with clear constraints....



SPS user schedule for 2018

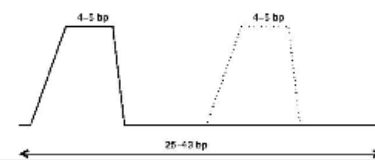
schedule issue date: 07-Feb-2018

Version: 1.01 ■ LHC Exp. ■ PS/SPS Exp. ■ Other Exp. ■ INT Exp.

| | | Mar | | | Apr | | | Mai | | | Jun | | | Jul | | | Aug | | | Sep | | | Oct | | | Nov | | | Dec | | | | | | | | | | | | | | | | | | | | | |
|------------|----------|---|----|------------|------------------|---------------------|------------------|-------------|------------------|-----------------|----------------|-------------|-----------|---------------|-------------|---------------------|----------------|-----------------|-------------|----------------|-----------------|-----------|----------------|------------------|--------------|--------------|------------|---------|-------------|---------|---------------|--------|-------------|----------|-------|-------|-------|-------|-------|-------|-------|--|--|--|--|--|--|--|--|--|
| Week | | 11 | 12 | 13 | 14 | 15 | 16 | 17 | 18 | 19 | 20 | 21 | 22 | 23 | 24 | 25 | 26 | 27 | 28 | 29 | 30 | 31 | 32 | 33 | 34 | 35 | 36 | 37 | 38 | 39 | 40 | 41 | 42 | 43 | 44 | 45 | 46 | 47 | 48 | 49 | 50 | | | | | | | | | |
| Machine | | <div style="display: flex; justify-content: space-between; font-size: small;"> UA9 TS1 Coldex UA9 TS2 Coldex Coldex RP </div> | | | | | | | | | | | | | | | | | | | | | | | | | | | | | | | | | | | | | | | | | | | | | | | | |
| North Area | T2 - H2 | SPS & TT20 Setup 18 | | NA Setup 8 | HERD FIT 7 | NA62 GTK 7 | NA61 SHINE 14 | | Calice | TIC | CMS HCAL 14 | | ATLAS ZDC | Calice (NA61) | NA61 K | NA61 SHINE 21 | | AXIAL | KLEVER | EMMA | CMS HGC 14 | | CMS HCAL (Sub) | | HERD | NA61 SHINE 7 | CMS HGC 14 | | NP02 14 | | NA61 SHINE 28 | | | | | | | | | | | | | | | | | | | |
| | T2 - H4 | SPS & TT20 Setup 18 | | NA Setup 8 | NA63 9 | CMS ECAL 7 | GIF RD51 14 | | NA64 Setup 7 | NA64 35 | | | CM ECAL | A | A | SHIP Installation 7 | SHIP Muon 14 | SHIP Chems 7 | GIF RD51 14 | | NP04 setup 7 | NP04 7 | MS ITD 14 | | NP04 14 | CMS ECAL 7 | NP04 14 | | GR RD 7 | NP04 12 | RE29 (IMP) 7 | HERD 7 | ATLAS ZDC 7 | Calice 7 | | | | | | | | | | | | | | | | |
| | T4 - H6 | SPS & TT20 Setup 18 | | NA Setup 8 | Clic plus 7 | CMS Outer Tracker 9 | ATLAS 14 | | ATLAS | ATLAS | ATLAS | CMS Outer | ATLAS | AIDA | ATLAS | ATLAS | ATLAS | ATLAS | ATLAS | ATLAS | ATLAS | ATLAS | ATLAS | ATLAS | ATLAS | ATLAS | AIDA WP7 7 | Katol 7 | ATLAS ATLAS | ATLAS | ATLAS | ATLAS | ATLAS | ATLAS | ATLAS | ATLAS | ATLAS | ATLAS | ATLAS | ATLAS | ATLAS | | | | | | | | | |
| | T4 - H8 | SPS & TT20 Setup 18 | | NA Setup 8 | TOTEM (+UA9) 9 | ATLAS 7 | ATLAS HV-CMOS 14 | LHCb 14 | ATLAS Tilecal 14 | ATLAS HV CMOS 7 | TOTEM (1000) 7 | ATLAS TRT 7 | LHCb 21 | cryobea 7 | CMS ITR 7 | ALICE FOCAL 14 | TOTEM (1000) 7 | ATLAS HV CMOS 7 | FCC 7 | TOTEM (1000) 7 | ATLAS HV CMOS 7 | CMS ITR 7 | LHCb 26 | ATLAS Tilecal 14 | R2E (1000) 7 | HNX 14 | NUCLEON 7 | | | | | | | | | | | | | | | | | | | | | | | |
| | T4 - K12 | SPS & TT20 Setup 18 | | NA Setup 8 | NA62 217 | | | | | | | | | | | | | | | | | | | | | | | | | | | | | | | | | | | | | | | | | | | | | |
| | T6 - M2 | SPS & TT20 Setup 18 | | NA Setup 8 | NA58 COMPASS 217 | | | | | | | | | | | | | | | | | | | | | | | | | | | | | | | | | | | | | | | | | | | | | |
| TT41 | | | | | AWAKE 21 | | | | | | | AWAKE 21 | | | | | | | AWAKE 21 | | | | | | | AWAKE 21 | | | | | | | | | | | | | | | | | | | | | | | | |
| TT60 | | | | | | | | HiradMat 14 | HiradMat 14 | | | | | | HiradMat 14 | HiradMat 14 | | | HiradMat 14 | | | | | | HiradMat 14 | | | | | | | | | | | | | | | | | | | | | | | | | |

For further information contact the PS/SPS-Coordinator. Email: Sps.Coordinator@cern.ch, Tel: +41 75 411 3845.

The latest version of the schedule are available here: <http://sps-schedule.web.cern.ch/sps-schedule/>
 This schedule is synchronized with injector schedule v0.6.
 No beam to the North Area during Technical Stops (TS), Coldex, UA9 and Machine Developments (MD).
 For TS a RP cool down time is needed and will be announced in the days preceding the stop.
 Submit your ISIEC at least 2 weeks before your allocated beam time using <https://ep-th-safety.web.cern.ch/isiec>



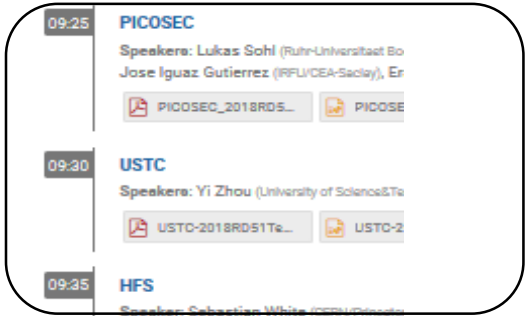
Possible requests to the SPS coordinator (priority in the order)

- October: Add one week
 - Eventually with the first week as parasitic
 - Installation
 - Parasitic in other beamlines
- April/May: Postpone 1 week
- August: move to July – to be discussed if it would really help some group in the collaboration

| | | | | | | | | | | | | | | | | |
|-----|----|----|-----|----|----|----|----|----|-----|----|----|----|----|--|--|-----|
| Aug | | | Sep | | | | | | Oct | | | | | | | Nov |
| 33 | 34 | 35 | 36 | 37 | 38 | 39 | 40 | 41 | 42 | 43 | 44 | 45 | 46 | | | |

| | | | | | | | | | | | | | |
|----------------------------|------------|--------------------|-----------|-----------------|--|-------------------|------------------|-------------------|------------------|-------------------|--|--------------------|--|
| F 51 4 | DsTau 7 | NP04 setup 7 | NP04 7 | CMS MTD 7 | | NP04 14 | CMS ECAL 7 | NP04 14 | GIF RD51 7 | NP04 12 | | RE29 DAMPE 7 | |
|----------------------------|------------|--------------------|-----------|-----------------|--|-------------------|------------------|-------------------|------------------|-------------------|--|--------------------|--|

| | | |
|-------|--|------------------|
| 09:05 | Trieste Speakers: Fulvio Tessarotto (INFN Trieste) Stefano Levorato (Universita e INFN Trieste) tessarotto_THGEM_... | OCTOBER |
| 09:10 | LNF Speakers: Gianfranco Morello (LNF), Gio Nazionali di Frascati (IT) TB_RWELL - LNF Gr... | APRIL/MAY |
| 09:15 | Kobe Speaker: Atsuhiko Ochi (Kobe University, J) Testbeam_u-PIC_18... Testbe... | APRIL/MAY AUGUST |
| 09:20 | SCREAM Speakers: Dan Shaked (Weizmann Institute Bressler (Weizmann Institute of Science (IL)) 2018_02_21_TBPla... | Potentially ALL |
| 09:25 | PICOSEC Speakers: Lukas Sohl (Ruhr-Universitaet Bo Jose Iguaz Gutierrez (RFL/CEA-Saclay), Er PICOSEC_2018RDS... PICOSE | Potentially ALL |
| 09:30 | USTC Speakers: Yi Zhou (University of Science&Te USTC-2018RDS1Te... USTO-2 | Potentially ALL |
| 09:35 | HFS Speaker: Sebastian White (CERN/University) | Potentially ALL |
| 09:40 | FTM Speaker: Piet Verwilligen (Universita e INFN) | AUGUST OCTOBER |
| 09:45 | R-PHI Speakers: Georgios Fanourakis (Nat. Cen | Potentially ALL |
| 09:50 | GDD/ESS VMM Speaker: Michael Lupberger (CERN) RDS1_Min/Weak_Fe... | Potentially ALL |
| 09:55 | Small Pad Resistive micromegas Speakers: Massimo Della Pietra (Univers (INFN - Sezione di Roma Tre) | |



Single setup

To be updated according to the today's meeting

FCC-ee detectors (P. Giacomelli)

- Dual Readout Calorimeter (RD52)
- GEM & μ rwell (muons detectors behind the calorimeter)
- End of beam line
- 3.5m needed

Still as an hypothetical request...

What you need to access the Test Beam

1. Valid CERN Dosimeter
2. CERN Badge + Validated Access to Counting/Control Room
3. Helmets and safety shoes for the experimental area



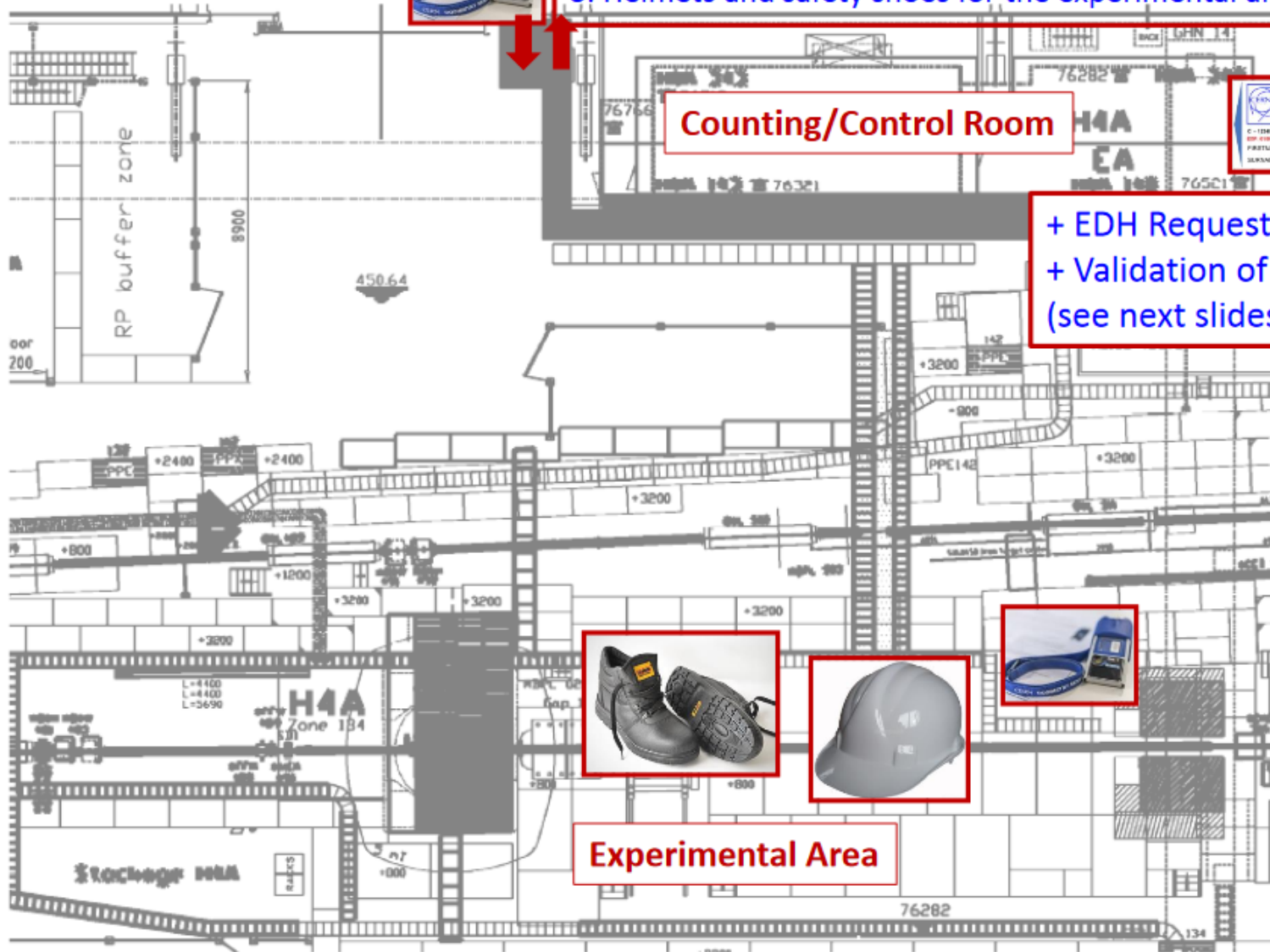
Counting/Control Room



+ EDH Request
+ Validation of the card
(see next slides)



Experimental Area



ACCESS TO THE CONTROL/COUNTING ROOM: To Be requested VIA EDH by each user

<https://edms.cern.ch/document/1421828/1>

Access Request (ACRQ)

Created by Michael JECKEL (EN-MEF-ESB) Tel: 79487 56710 on 29.07.2014

Requester: Michael JECKEL (EN-MEF-ESB) View user

Requester's CERN Status: STAF

Existing Access Line Item

| Item | Access Zone | Start Date | End Date | Justification |
|------|---------------------------|------------|----------|---------------|
| 1 | AD Target Surface Station | 12.06.2014 | | |
| 2 | Meeting room EHN1 (007) | 28.04.2014 | | |
| 3 | EHN1 access ramps (EH) | 14.03.2014 | | |
| 4 | Zone d'entreposage de | | | |
| 5 | EHN1 material doors (EH) | 10.10.2012 | | |
| 6 | NA S2 P2C beam (NA02 P2) | 06.08.2012 | | |
| 7 | NA S2 Control Room (NA) | 06.08.2012 | | |
| 8 | NA S2 Entry hall (NA02 E) | 06.08.2012 | | |
| 9 | Zone Patrol Rights (04g) | 06.06.2011 | | |
| 10 | Zone Patrol Rights (04g) | 06.06.2011 | | |
| 11 | Zone Patrol Rights (04g) | 06.06.2011 | | |

Line Item Editor

Access Site * MEYRN

Access Building * 157

Access Zone * 0157R-012 Control Room T9

Start Date 30.07.2014

End Date 15.08.2014

Justification * Test beam LHC

OK Cancel

End of test beam plus one week



Users are required to renew their access rights every 30 days by holding their card in front of an access control reader.



Hold your CERN card in front of the reader. A BLUE light will flash for up to 3 seconds - do not remove the card - while the data is being read/registered.



ROUGE or VERT reading / writing completed.

You can now use your card to open the electronic locks for which you have obtained authorisation.

http://gs-dep.web.cern.ch/es/content/Electronic_locks

Online Reader to validate your access in: R1, R2, R3, EHN1

Ref. To previous link for more info

See next slide for the references to our Counting/Control Room

Our Counting/Control Room

| SBA zone | Room number | User | Terminal | Phone | Barrack | Building / Office | Host Name |
|----------|---------------------------|------|----------|-------|---------|---------------------------|--------------------------------|
| H4-134 | 887/R-K47 | H4A | H4A | 76282 | HNA-348 | 887/1-A47 | cwo-hna348-h4a |
| | | | | | | | |

Line Item Editor ✕

Access Site *: ▾

Access Building *: ▾

Access Zone *: ▾ ? i

Start Date: ?

End Date: ?

Justification *: ?

End Date: 1 week more suggested

.. Or more if you are planning to come to several beam periods

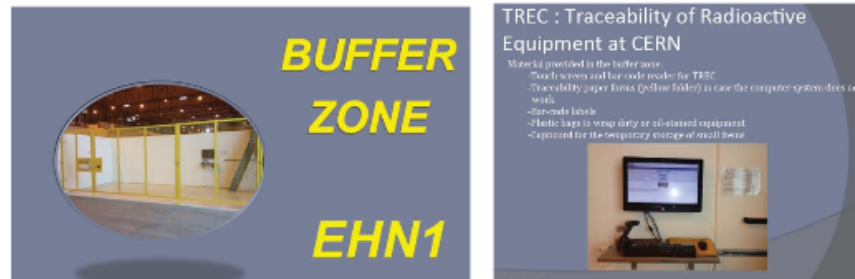
Material leaving the experimental area... just to keep in mind

any export of material from the CERN Experimental Area halls/buildings 157 (East Area), 193 (AD), 887 (EHN1), 888 (EHN2), 911 (ECN3) to an external destination must be:

registered in EDH using the Shipping Request form <https://edh.cern.ch/Document/SHIP>.

EDH Shipping Requests issued from the above mentioned areas (also for material declared as non-radioactive by the owner) are automatically forwarded to the relevant Radiation Protection Officer that will proceed with the compulsory radiological control before authorizing the transport.

Please note that this procedure also applies to material/goods belonging to external institutes as well as if the material is transported afterwards by the owner itself (e.g. CERN transport services not required in the EDH form).



We will take care of this but keep in mind that you cannot simply leave the area with your equipments without having RP check

New procedure, i.e. possible delay

<https://sps-schedule.web.cern.ch/sps-schedule/RadioProtectionDocuments/BufferzoneEHN1-english.pdf>