

Detectors.dat comparison for 2015-2017 files

Tomsk Polytechnic University

Konstantin Sharko

25 July 2018

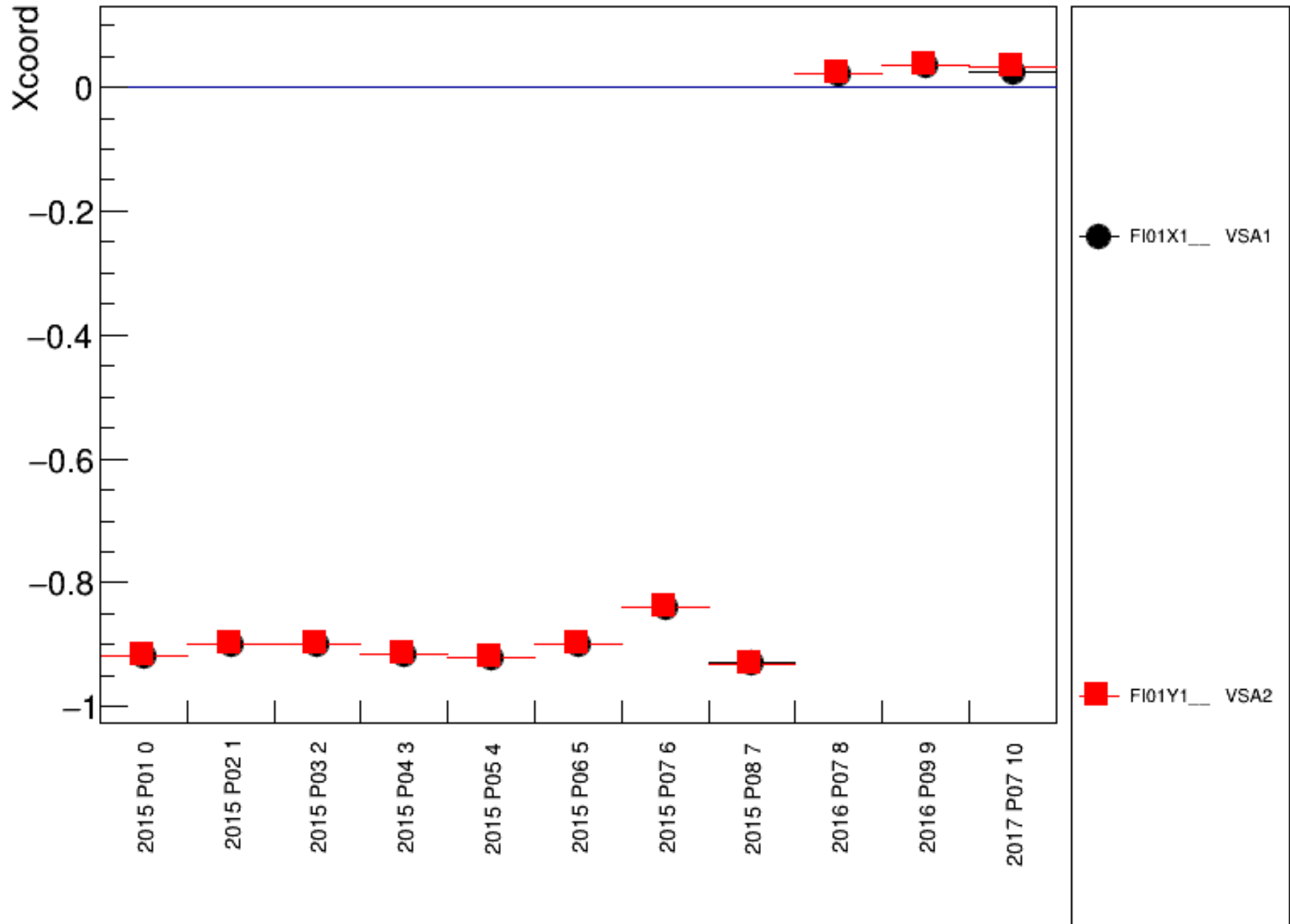
Used detectors.dat

detectors.259361.transv.dat	2015	P01	rev 1.8
detectors.260073.transv.dat	2015	P02	rev 1.8
detectors.260876.transv.dat	2015	P03	rev 1.8
detectors.261513.transv.dat	2015	P04	rev 1.11
detectors.262370.transv.dat	2015	P05	rev 1.2
detectors.263140.transv.dat	2015	P06	rev 1.8
detectors.263637.transv.dat	2015	P07	rev 1.6
detectors.264163.transv.dat	2015	P08	rev 1.7
detectors.274590.mu-.dat	2016	P07	rev 1.28
detectors.275536.mu-.dat	2016	P09	rev 1.25
detectors.280954.mu-.dat	2017	P07	rev 1.14

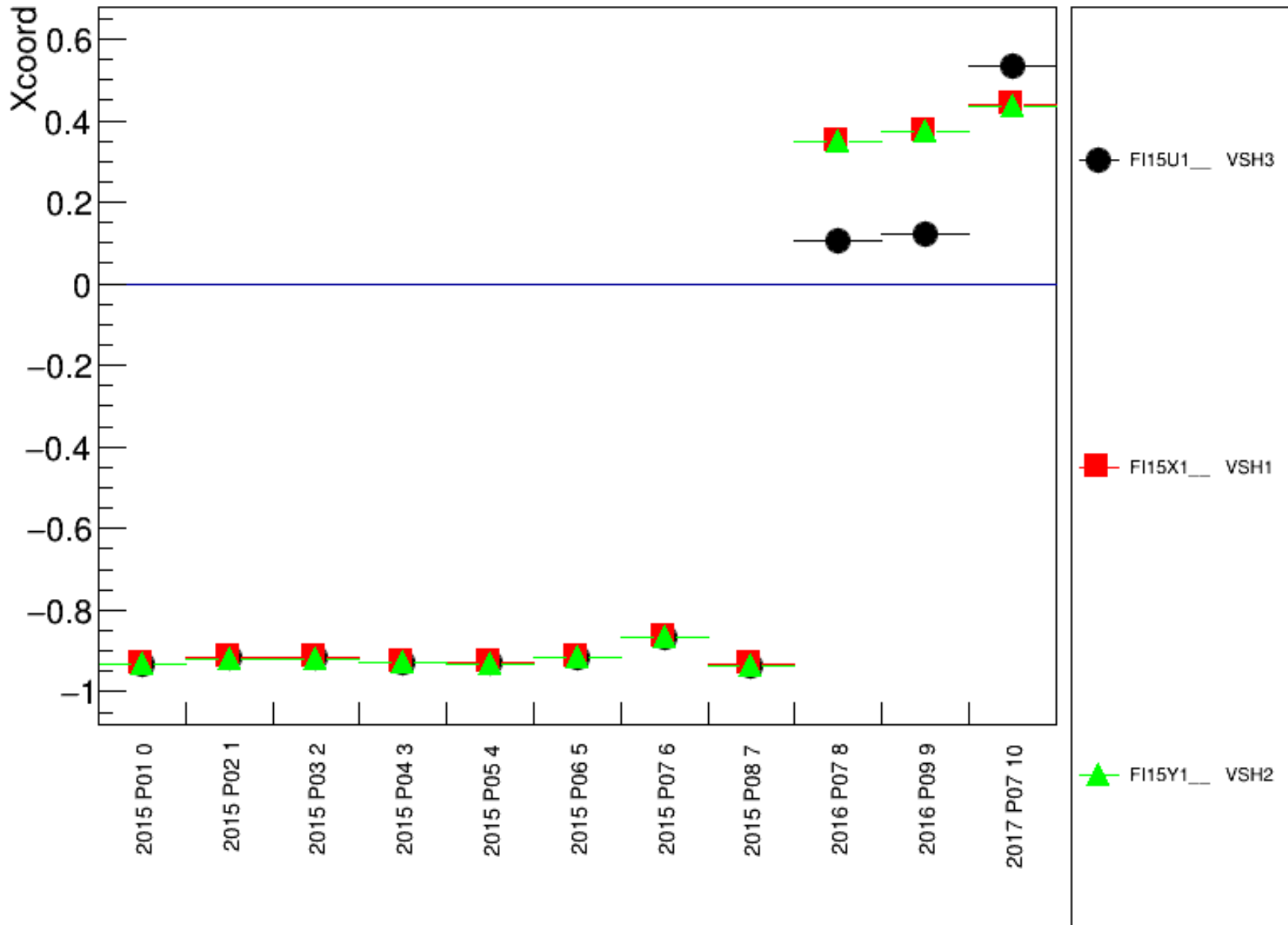
Used detectors.dat

- All .root and .png gfiles are available at [/afs/cern.ch/work/k/ksharko/public/datcompar/20180705](https://cern.ch/afs/cern.ch/work/k/ksharko/public/datcompar/20180705)
- All coordinate units are cm

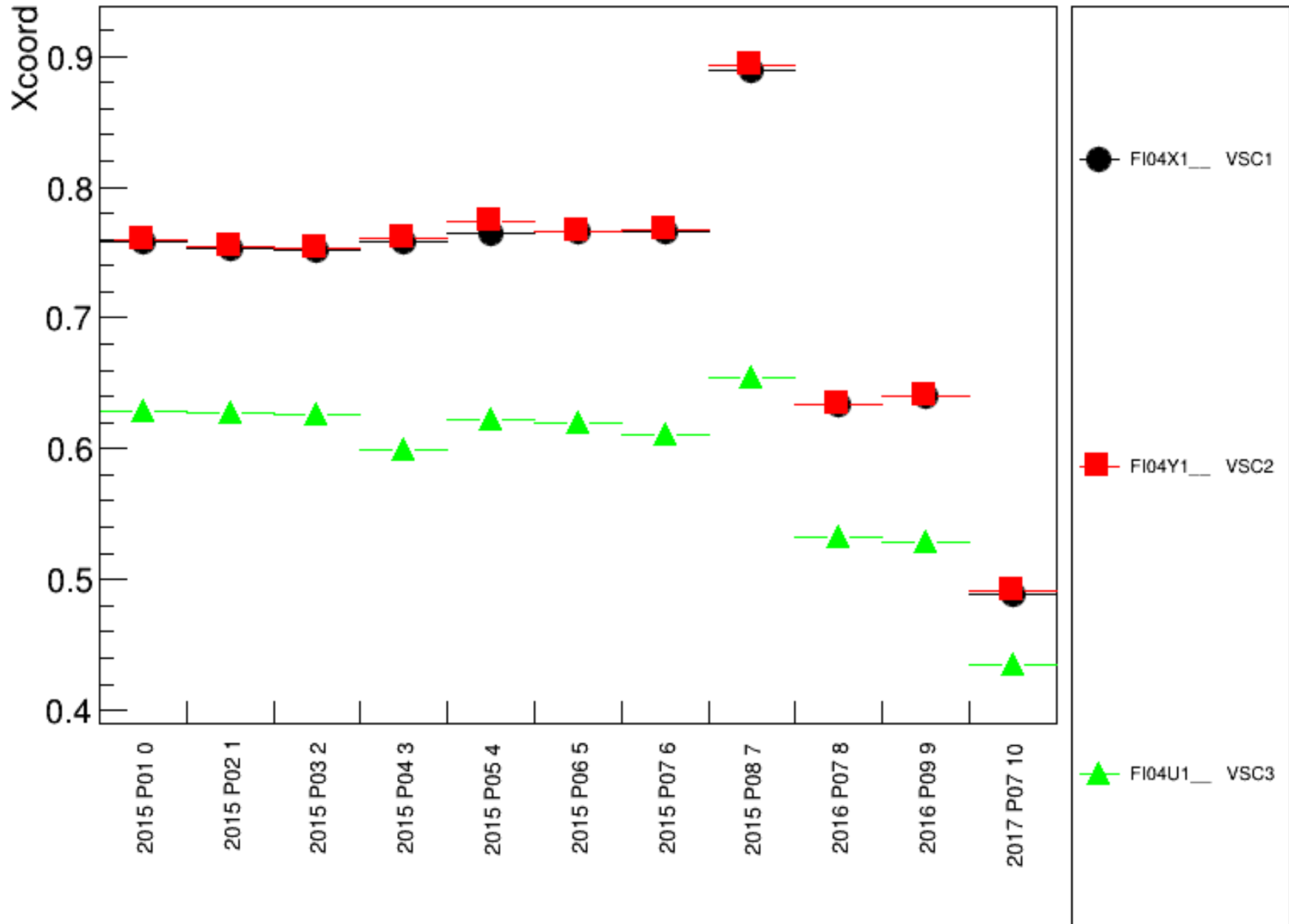
FI01, X



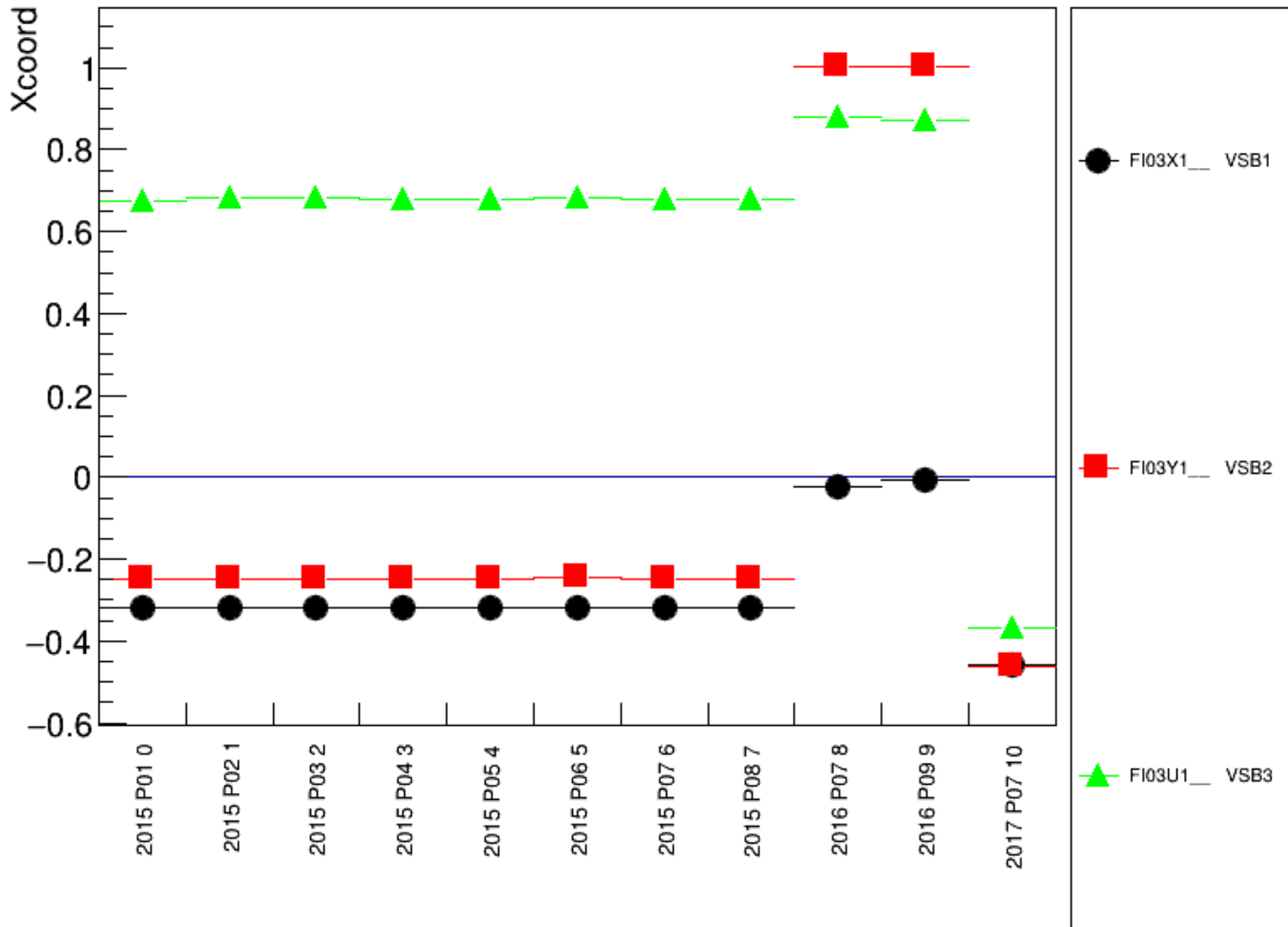
FI15, X



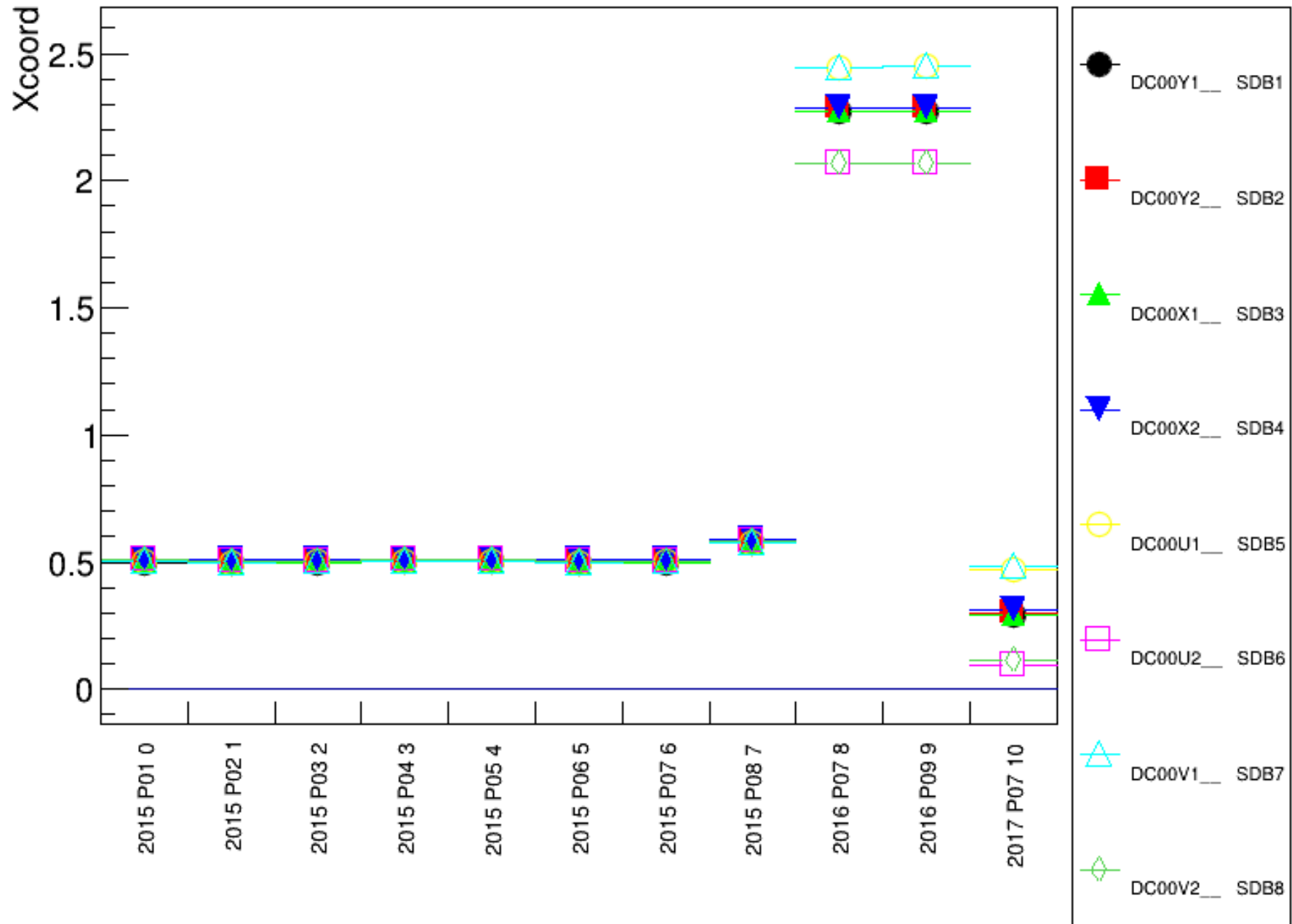
FI04, X



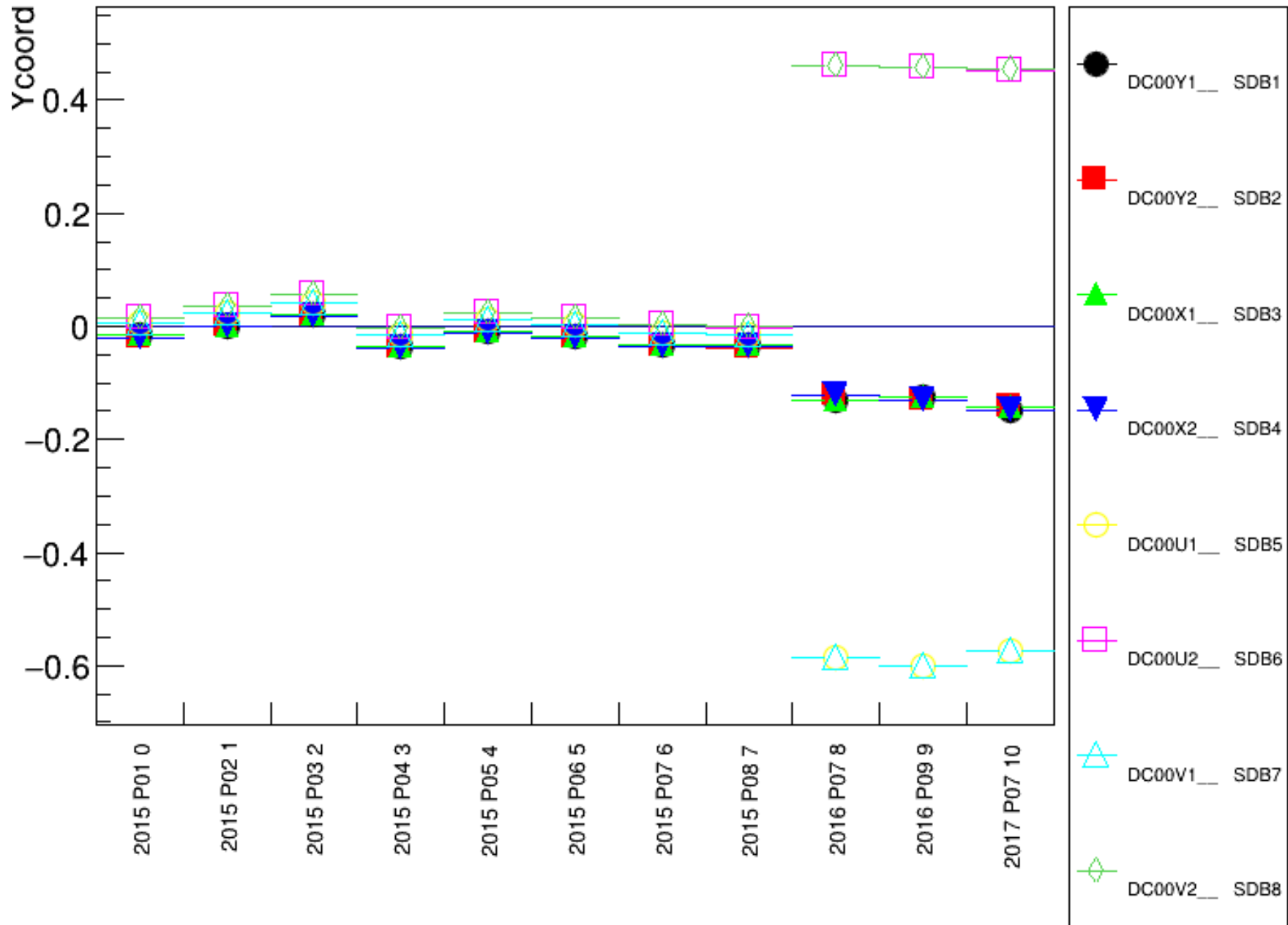
FI03, X



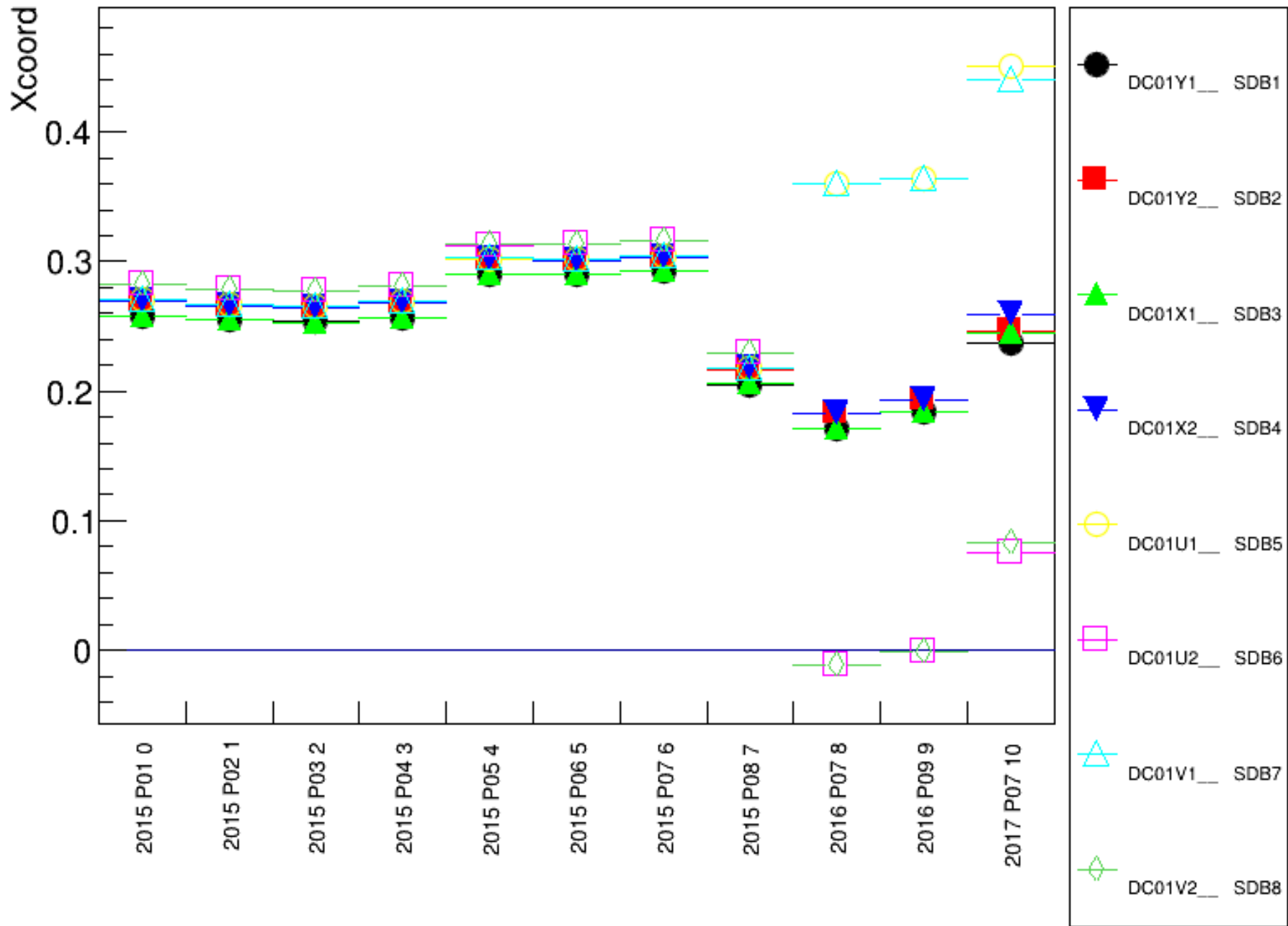
DC00, X



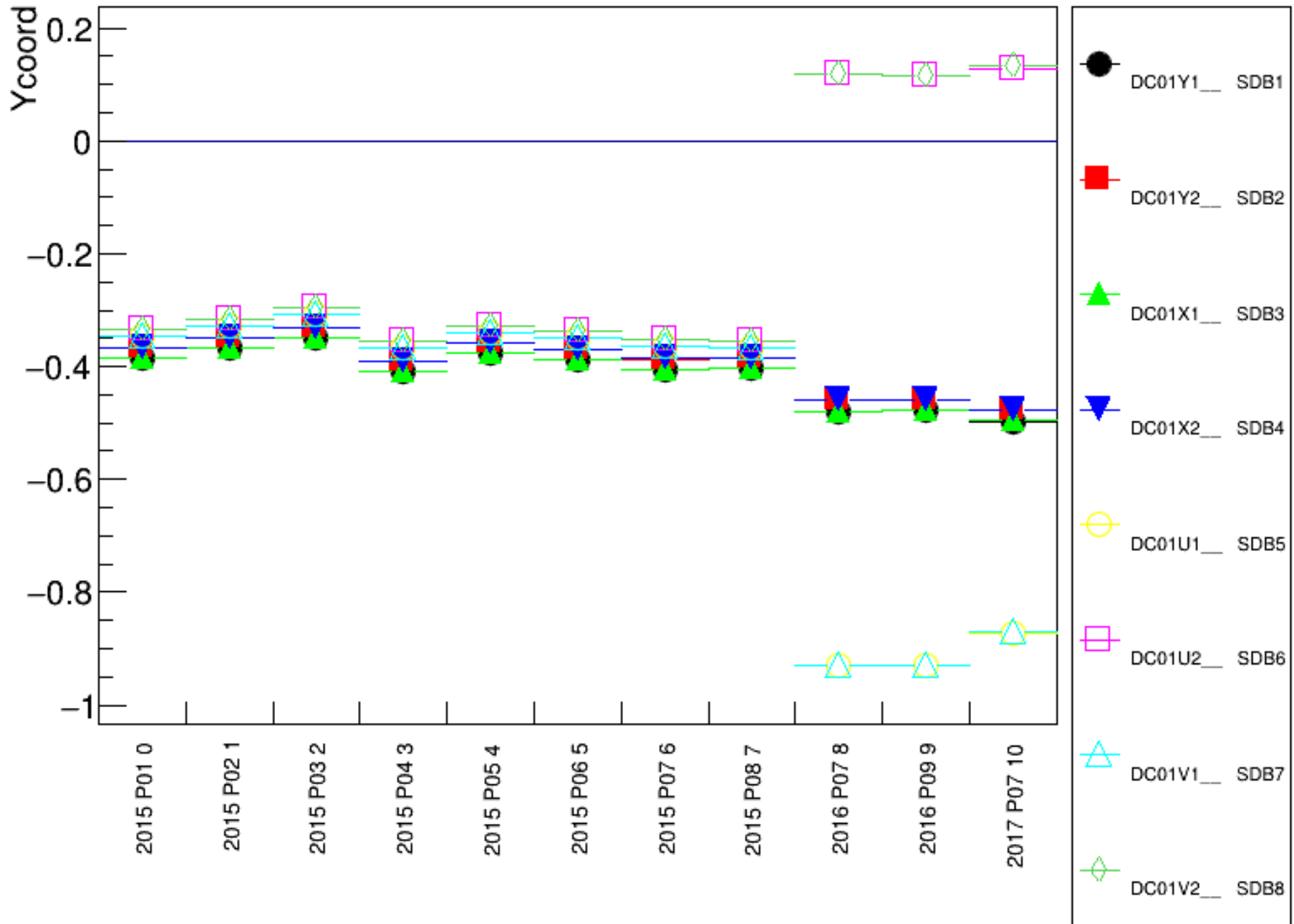
DC00, Y



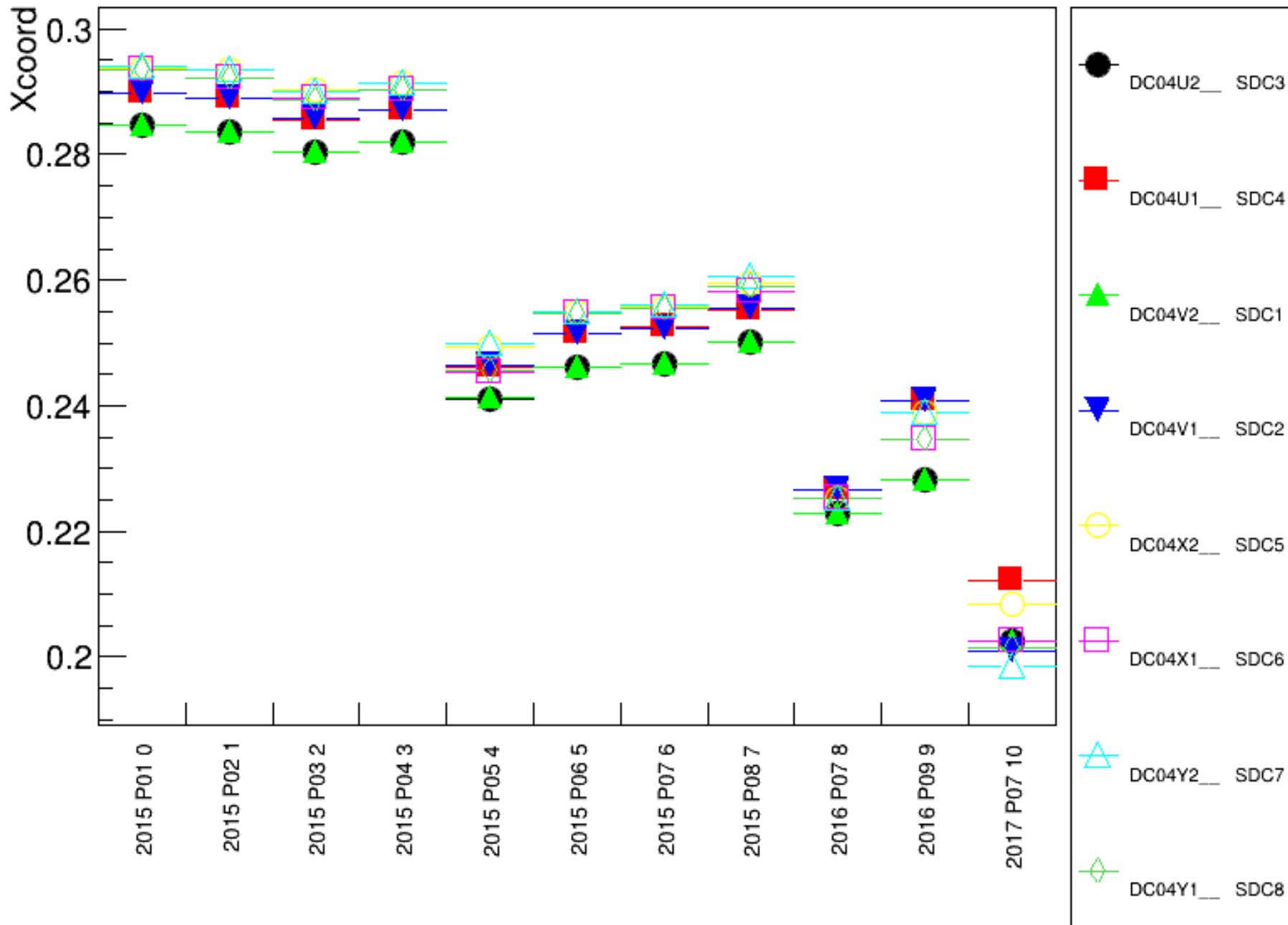
DC01, X



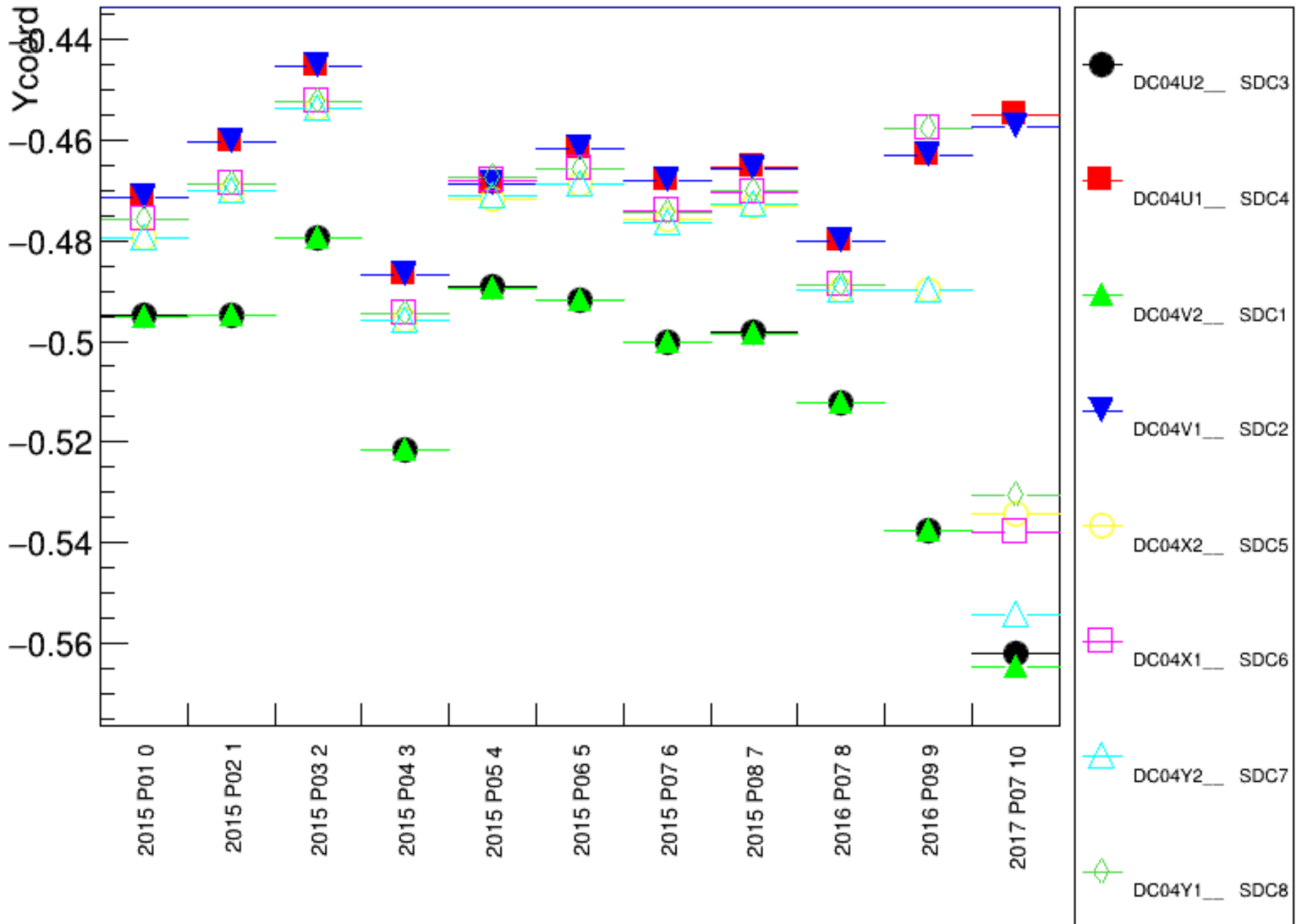
DC01, Y



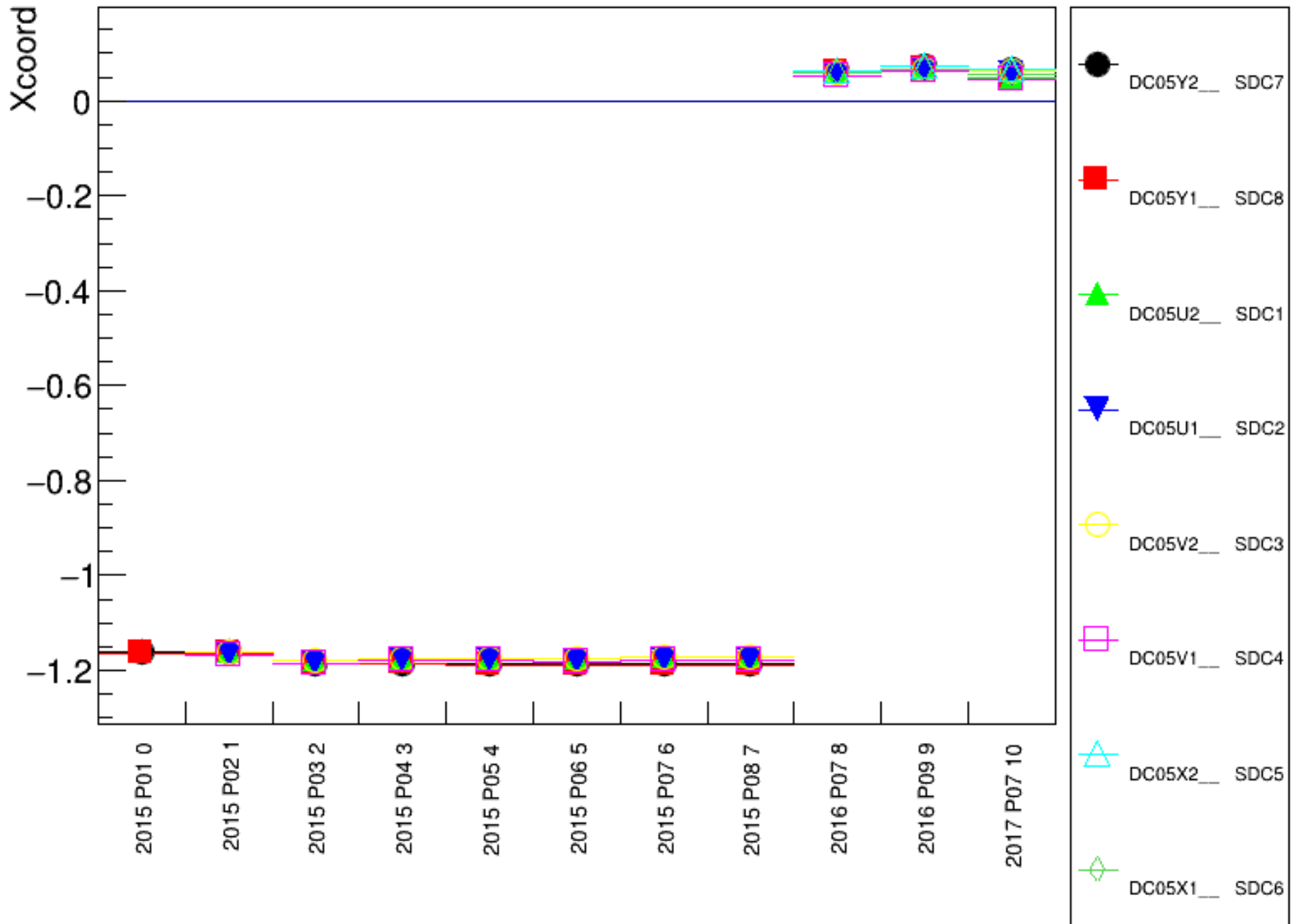
DC04, X



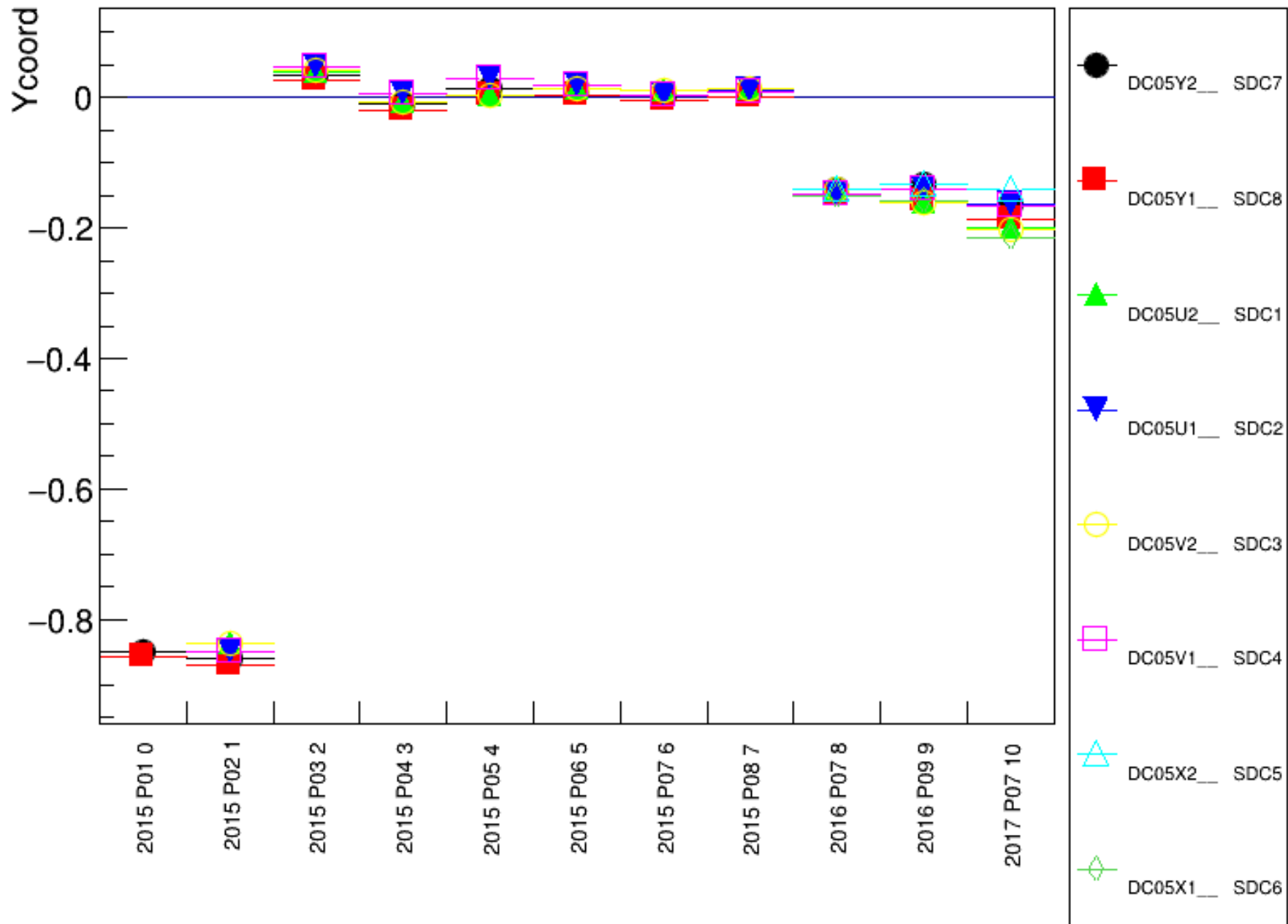
DC04, Y



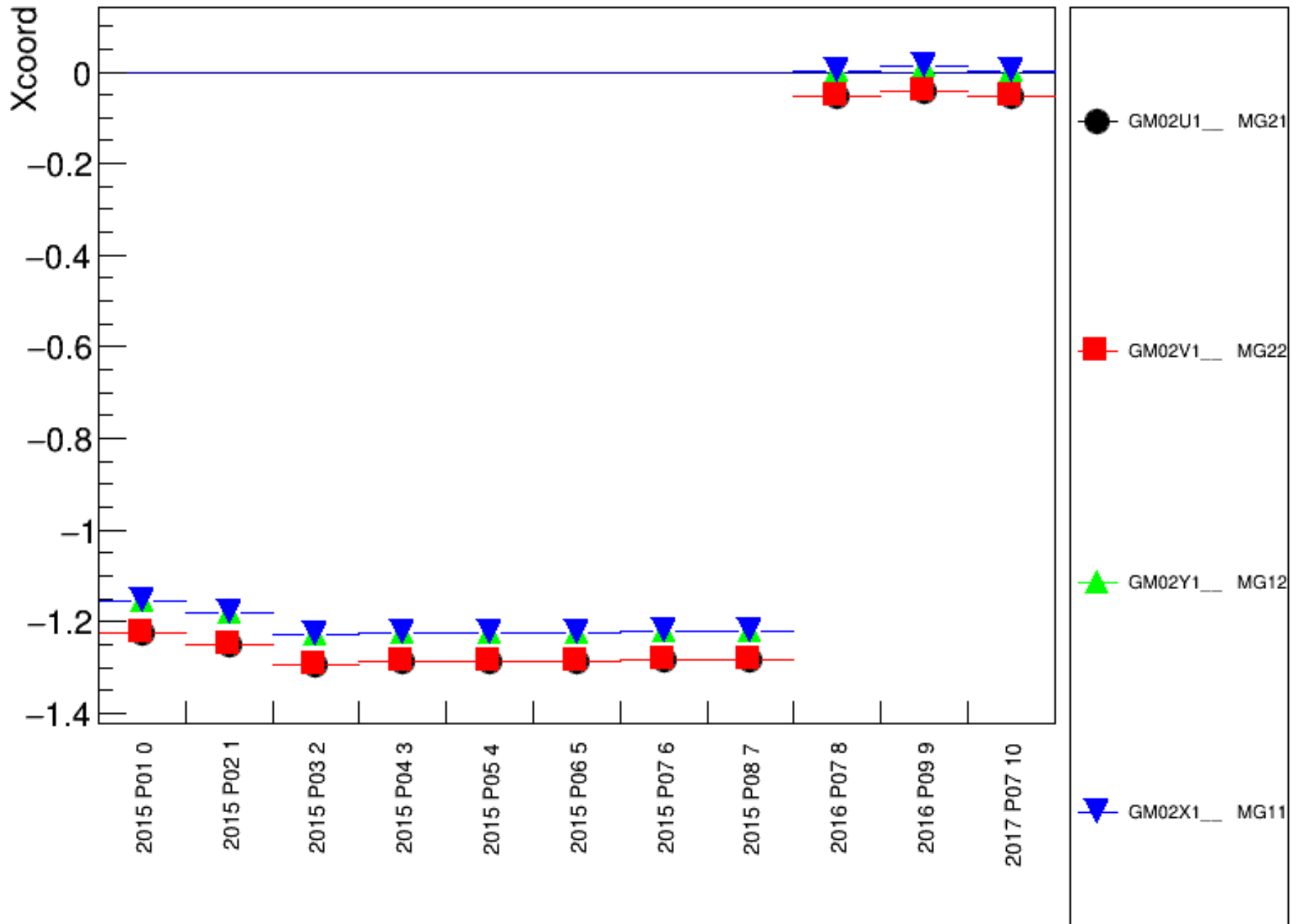
DC05, X



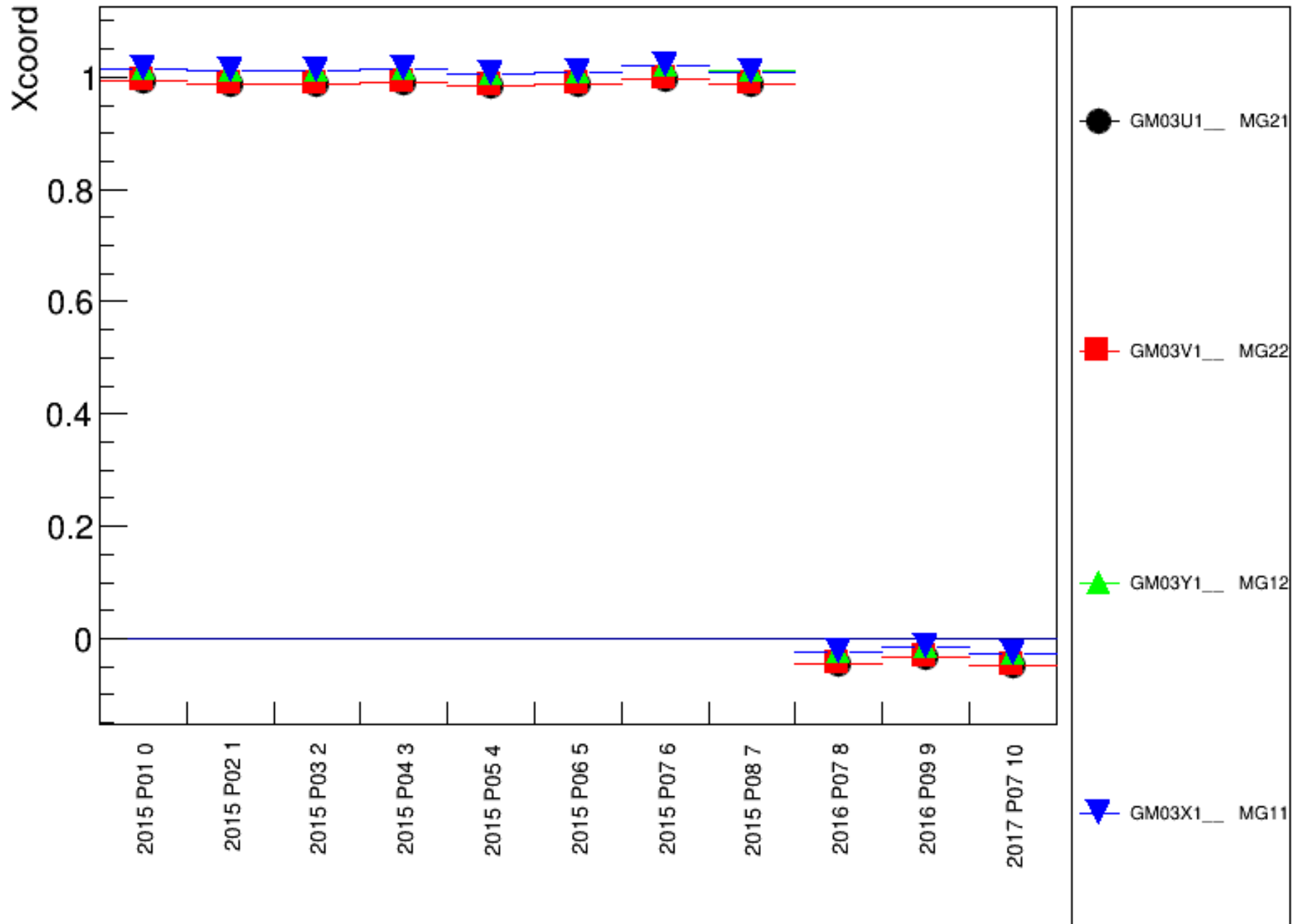
DC05, Y



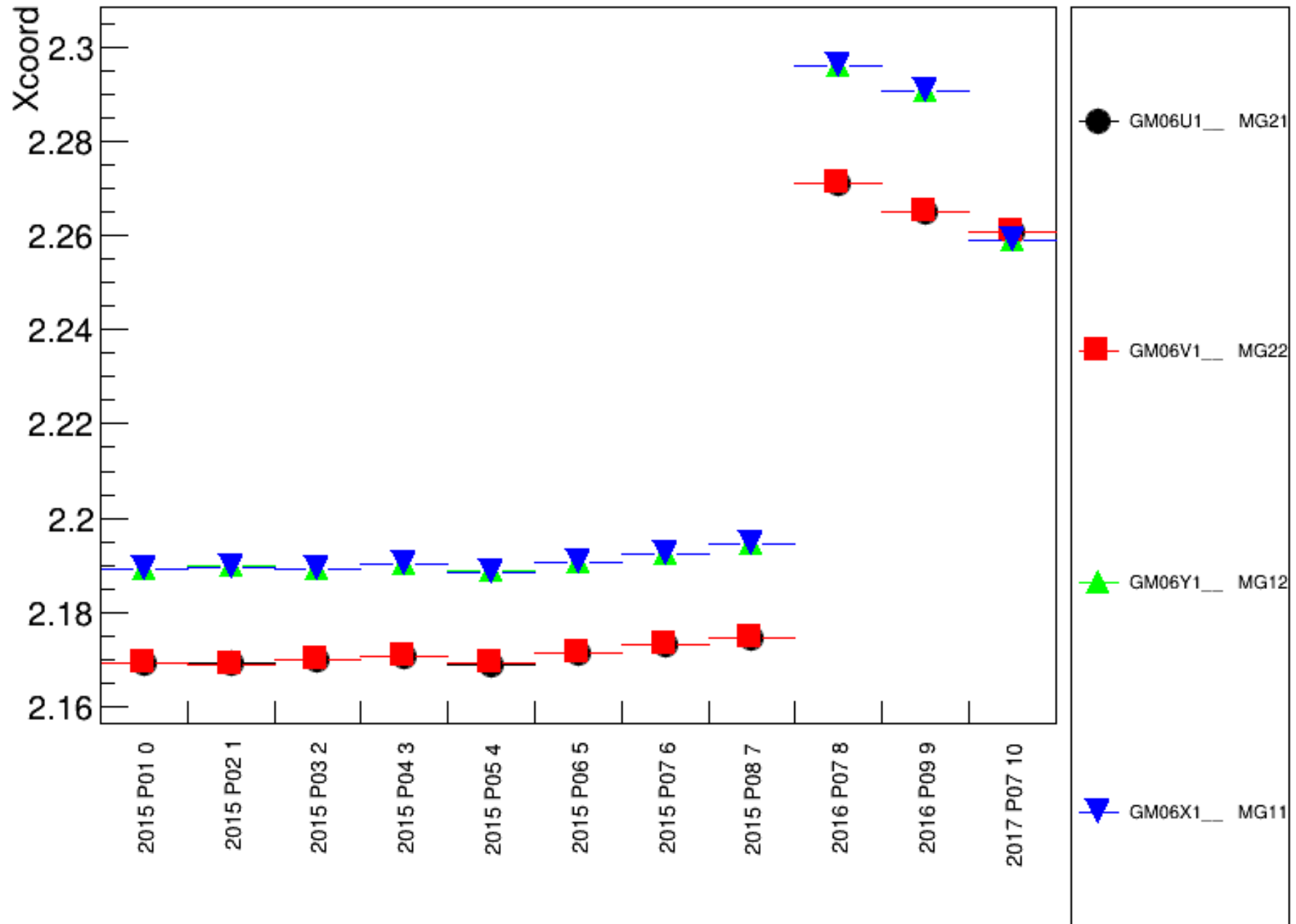
GM02, X



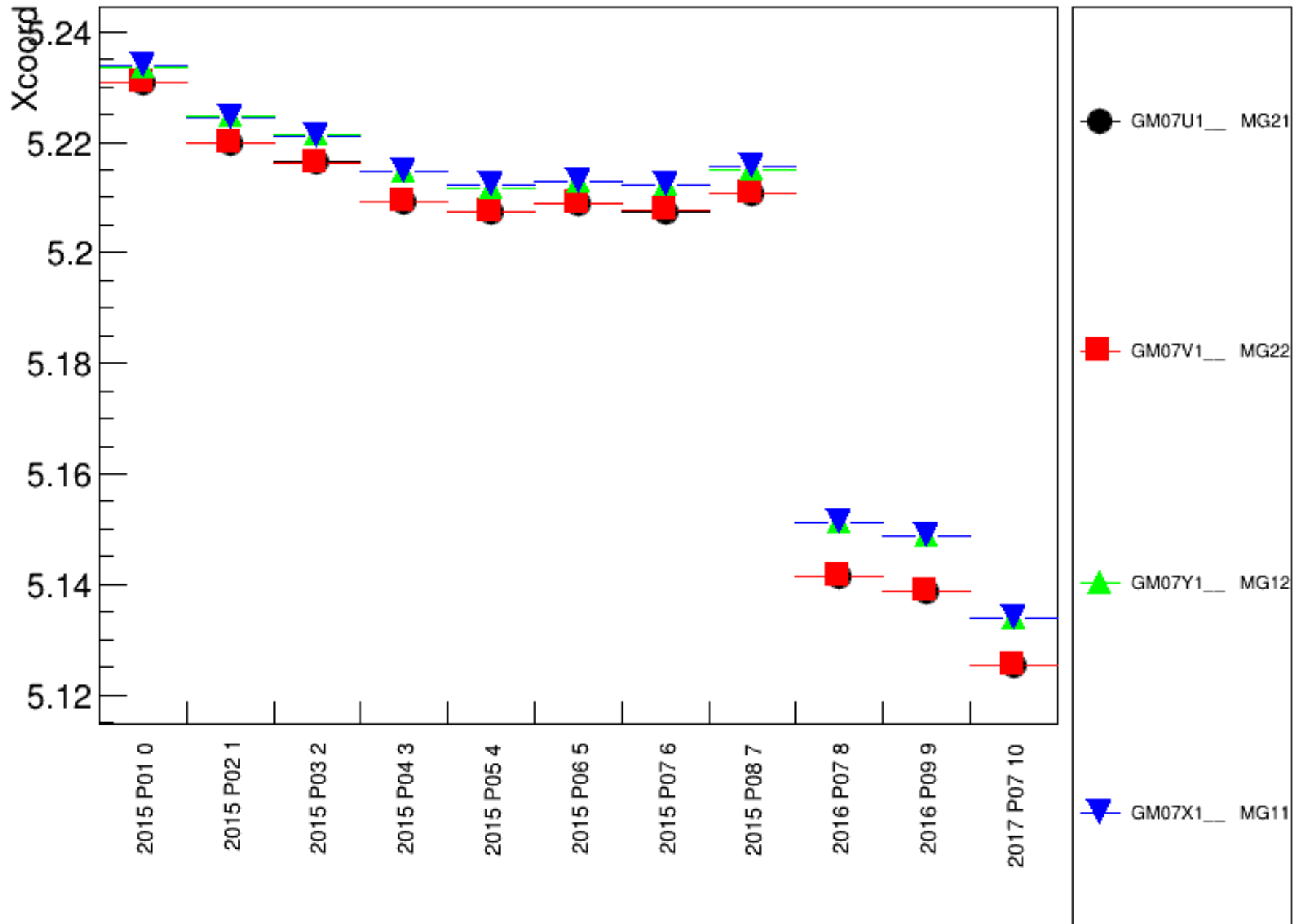
GM03, X



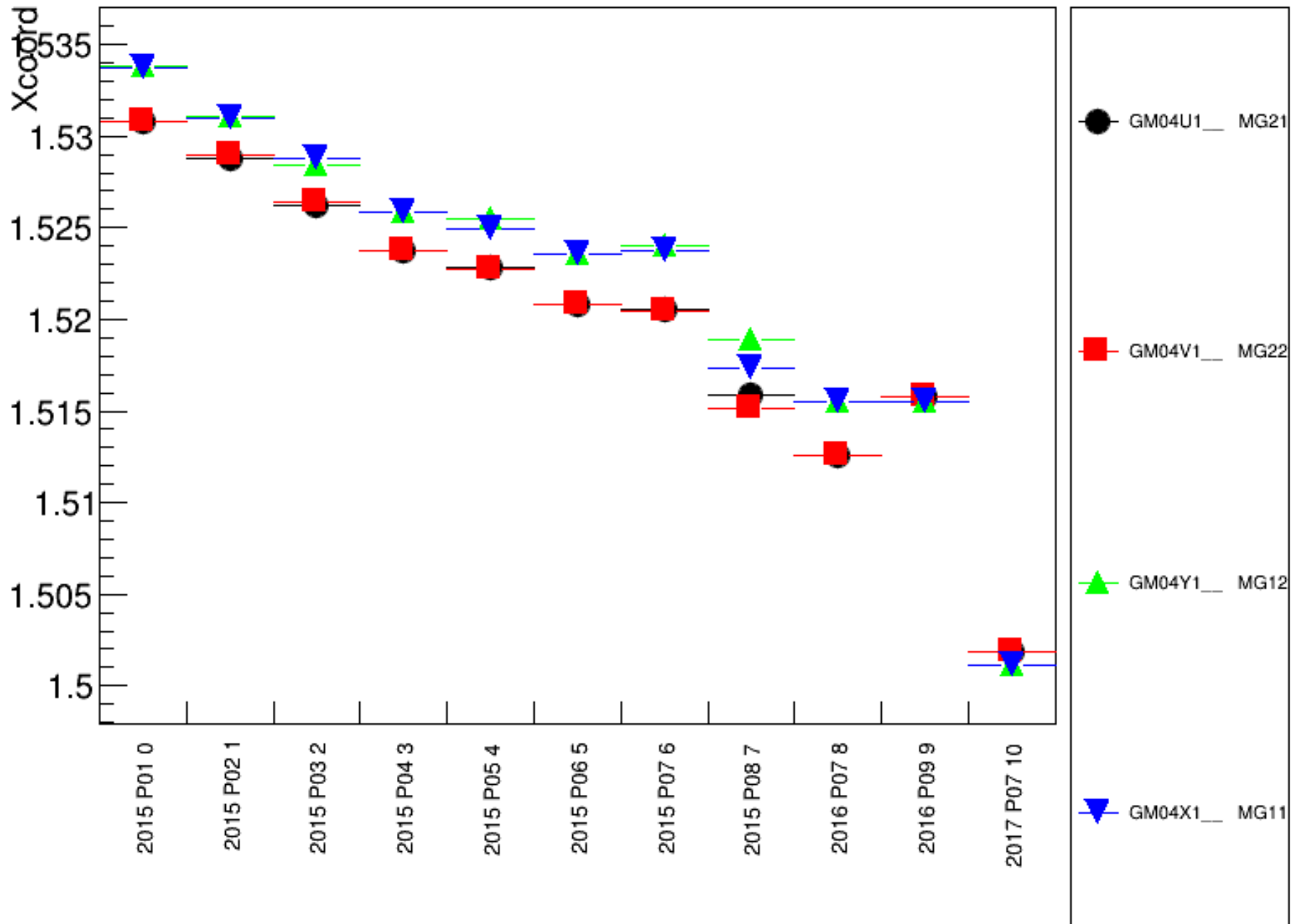
GM06, X



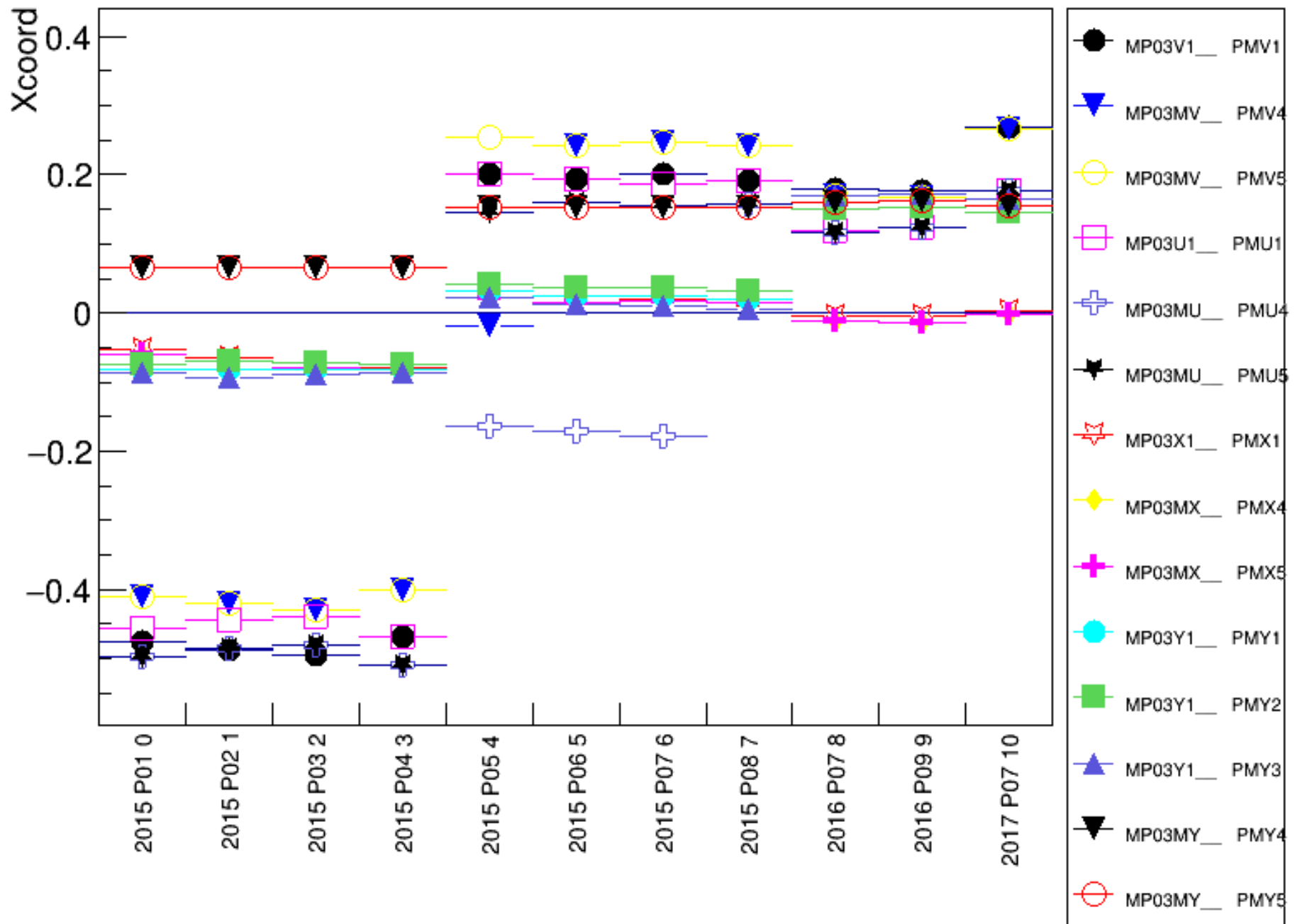
GM07, X



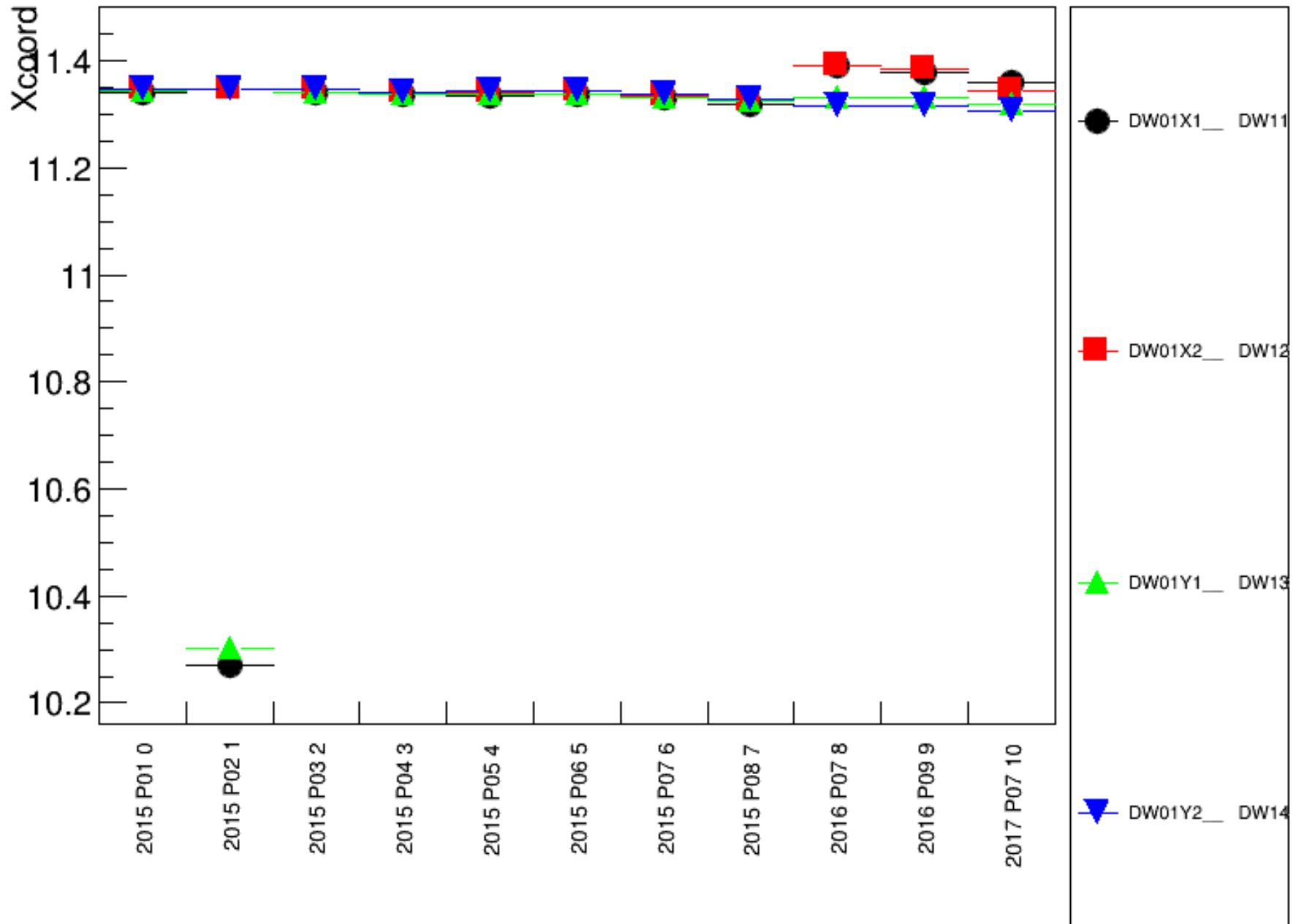
GM04, X



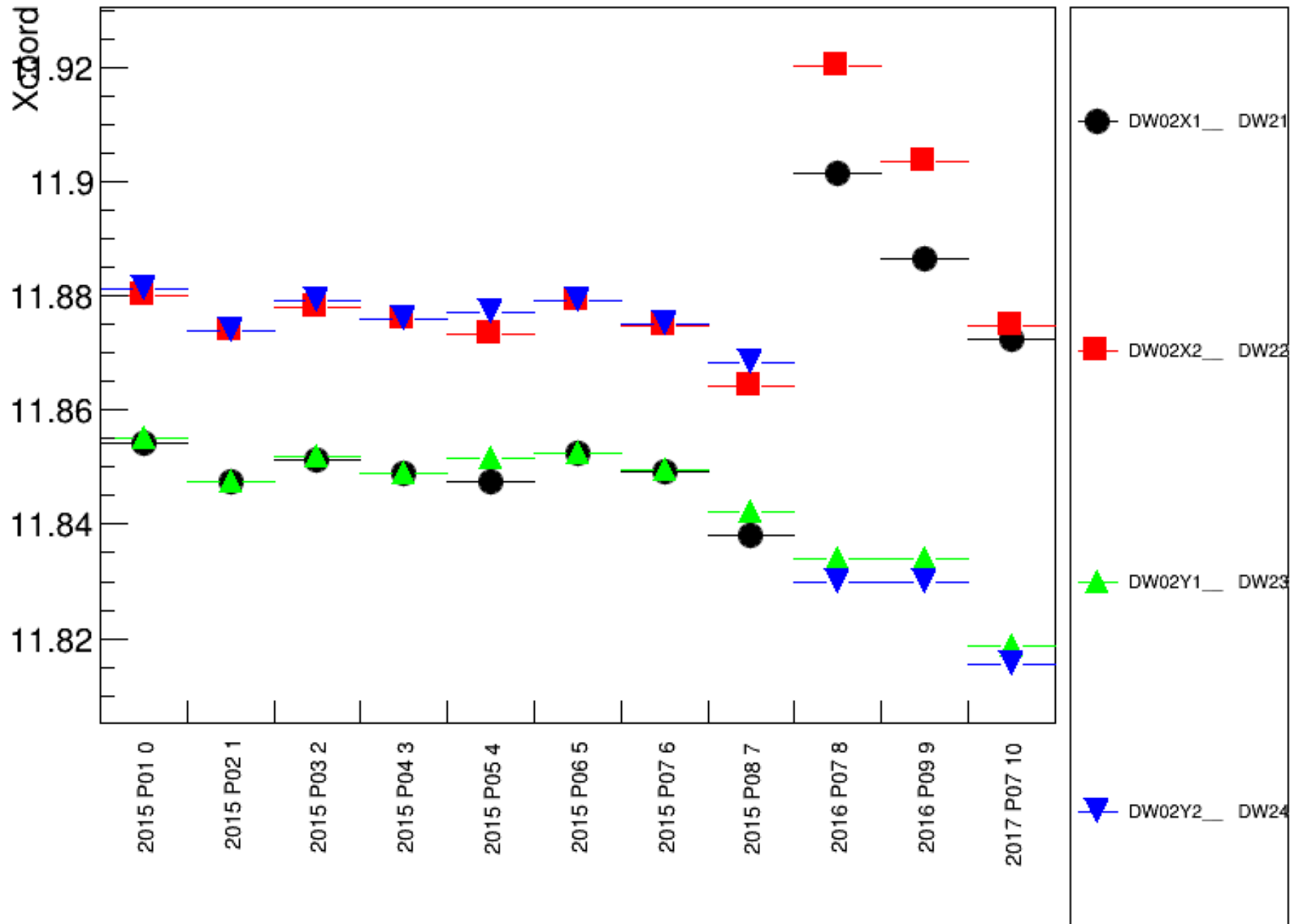
MP03 X



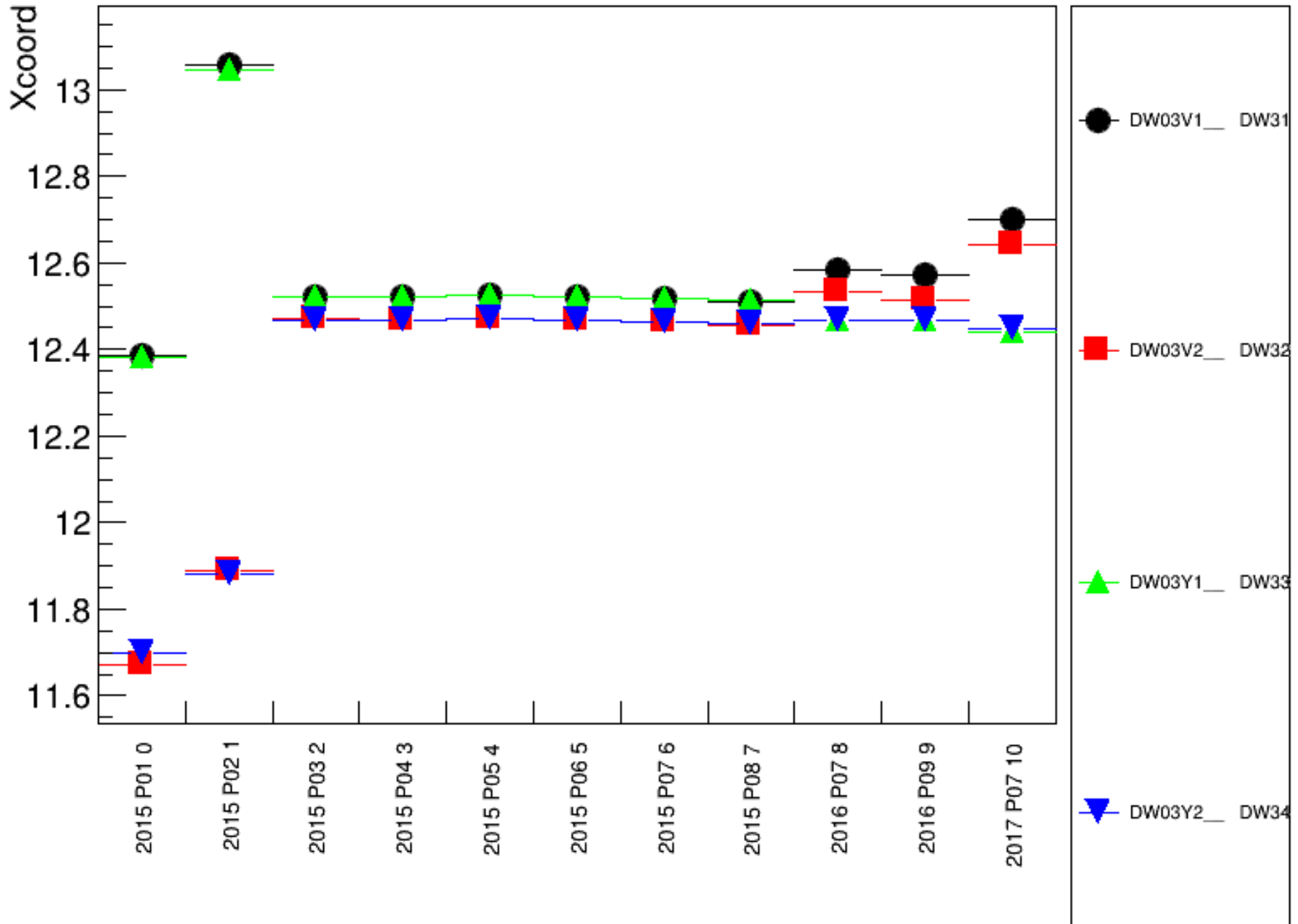
DW01, X



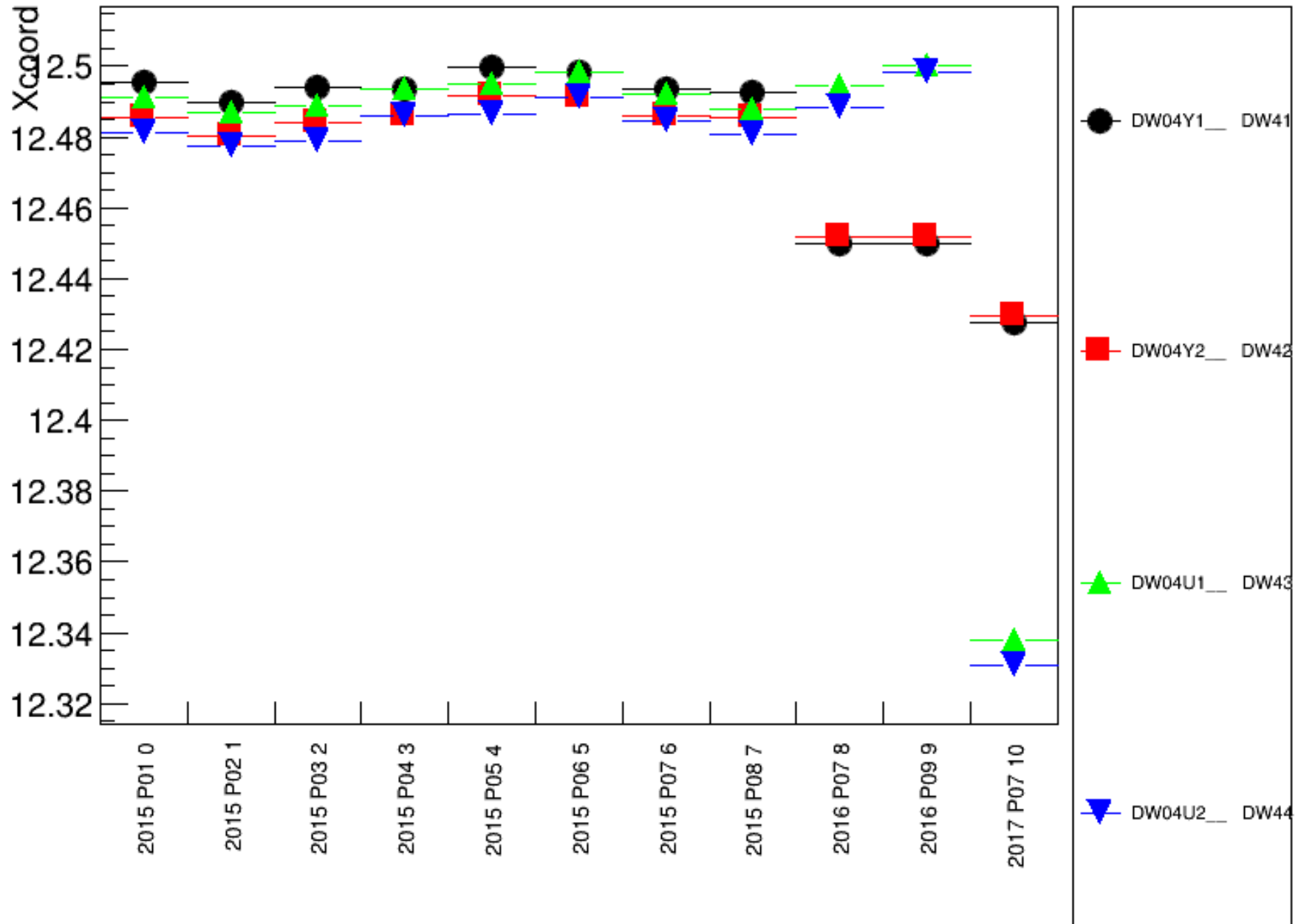
DW02, X



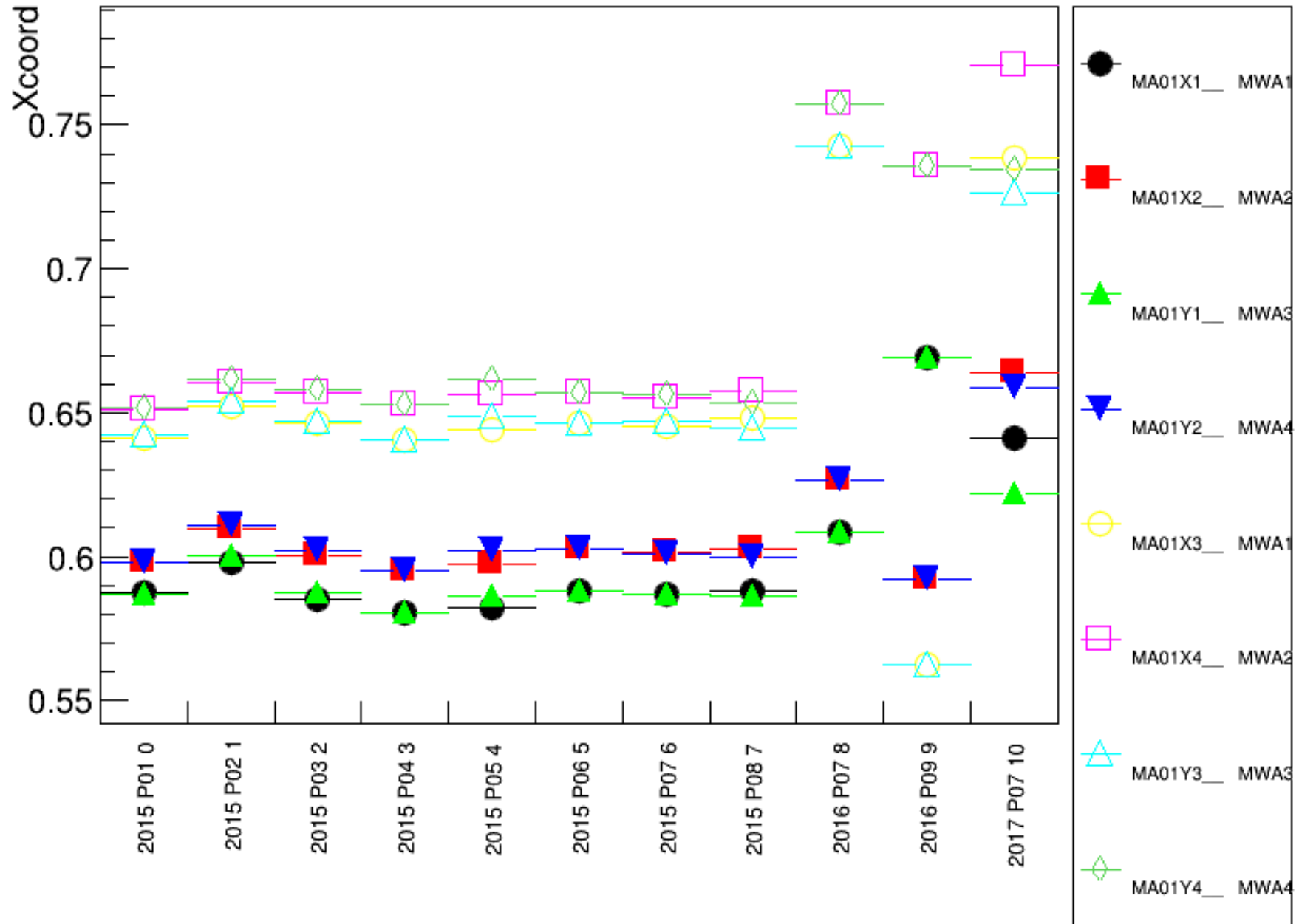
DW03, X



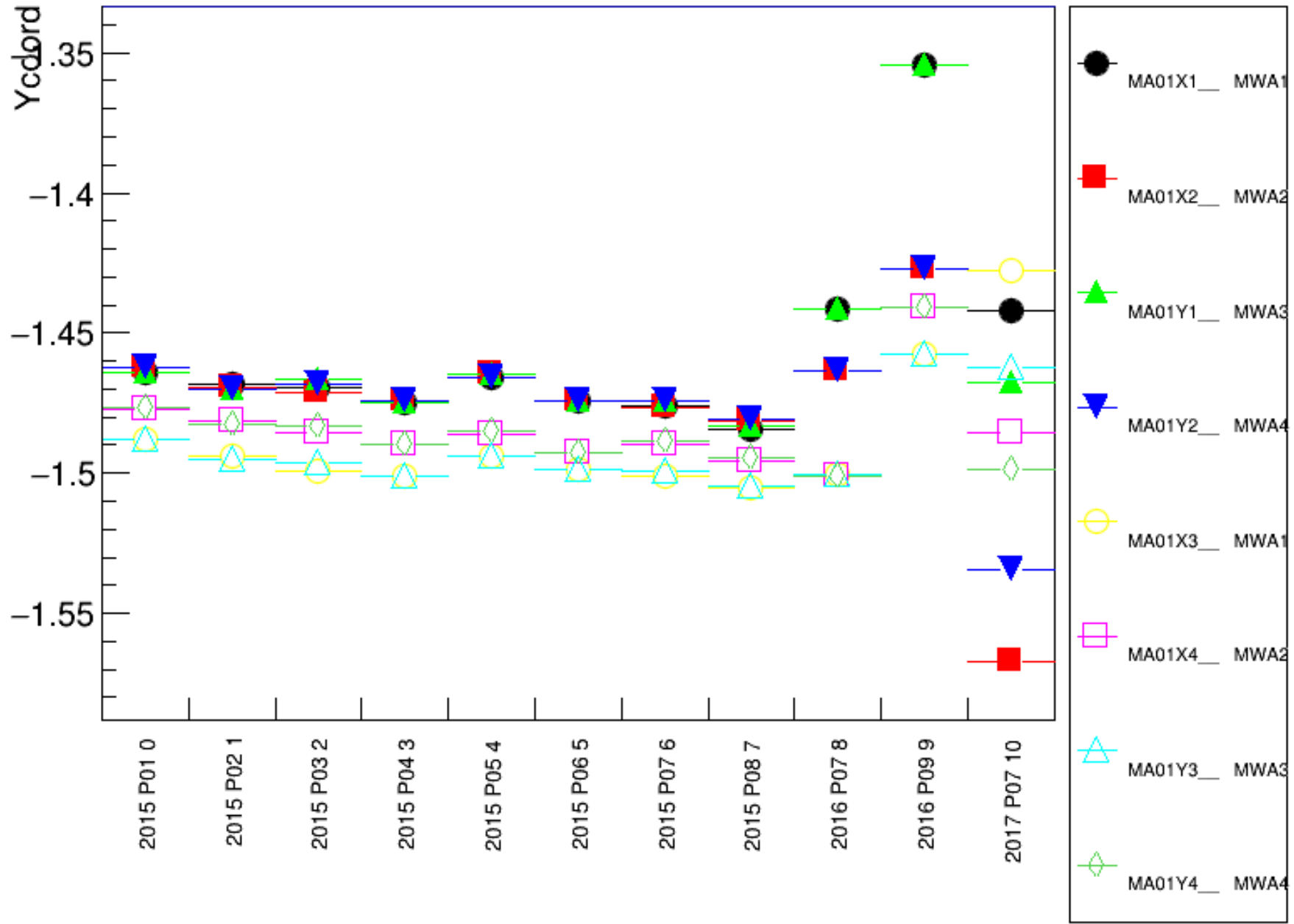
DW04, X



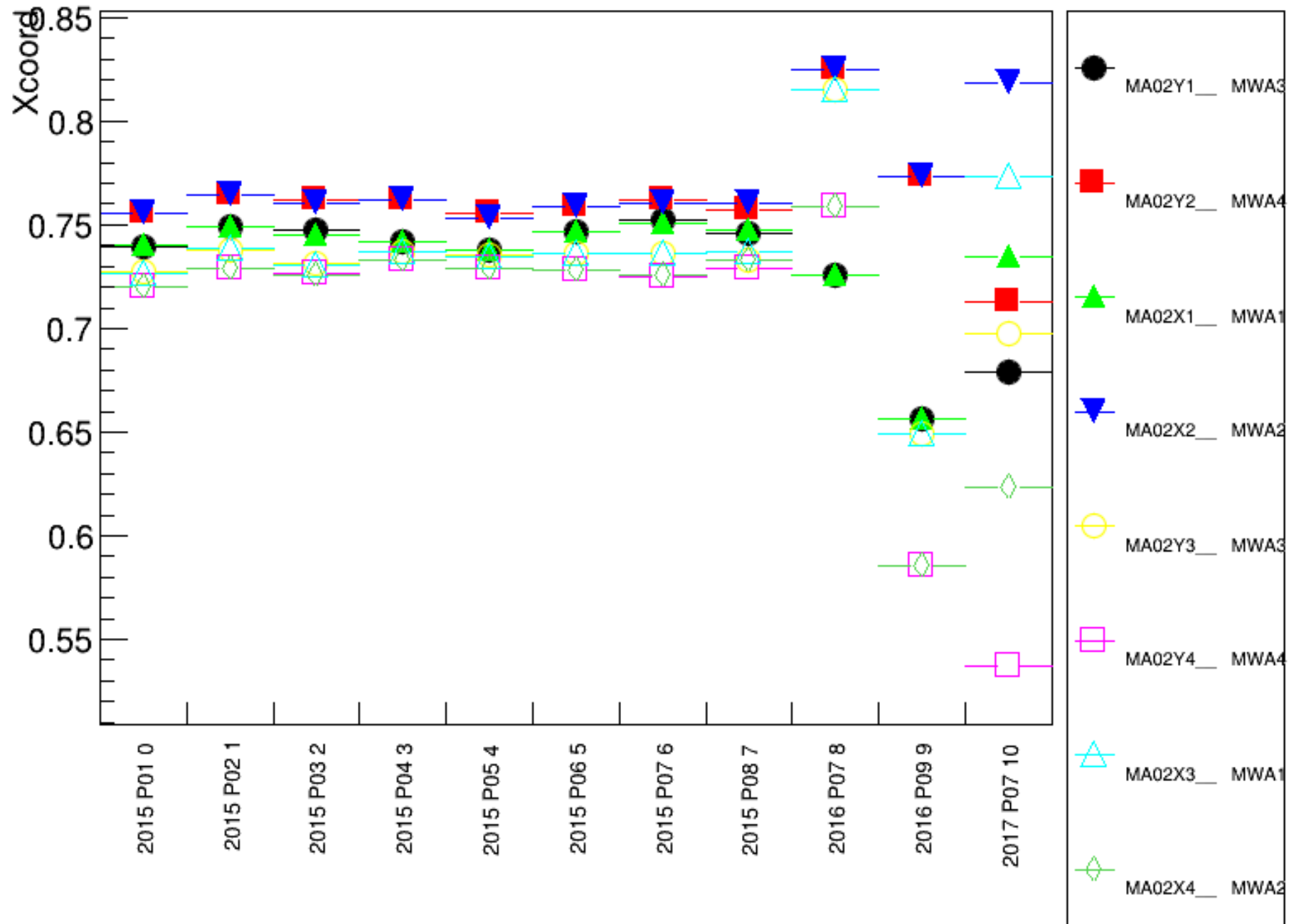
MA01, X



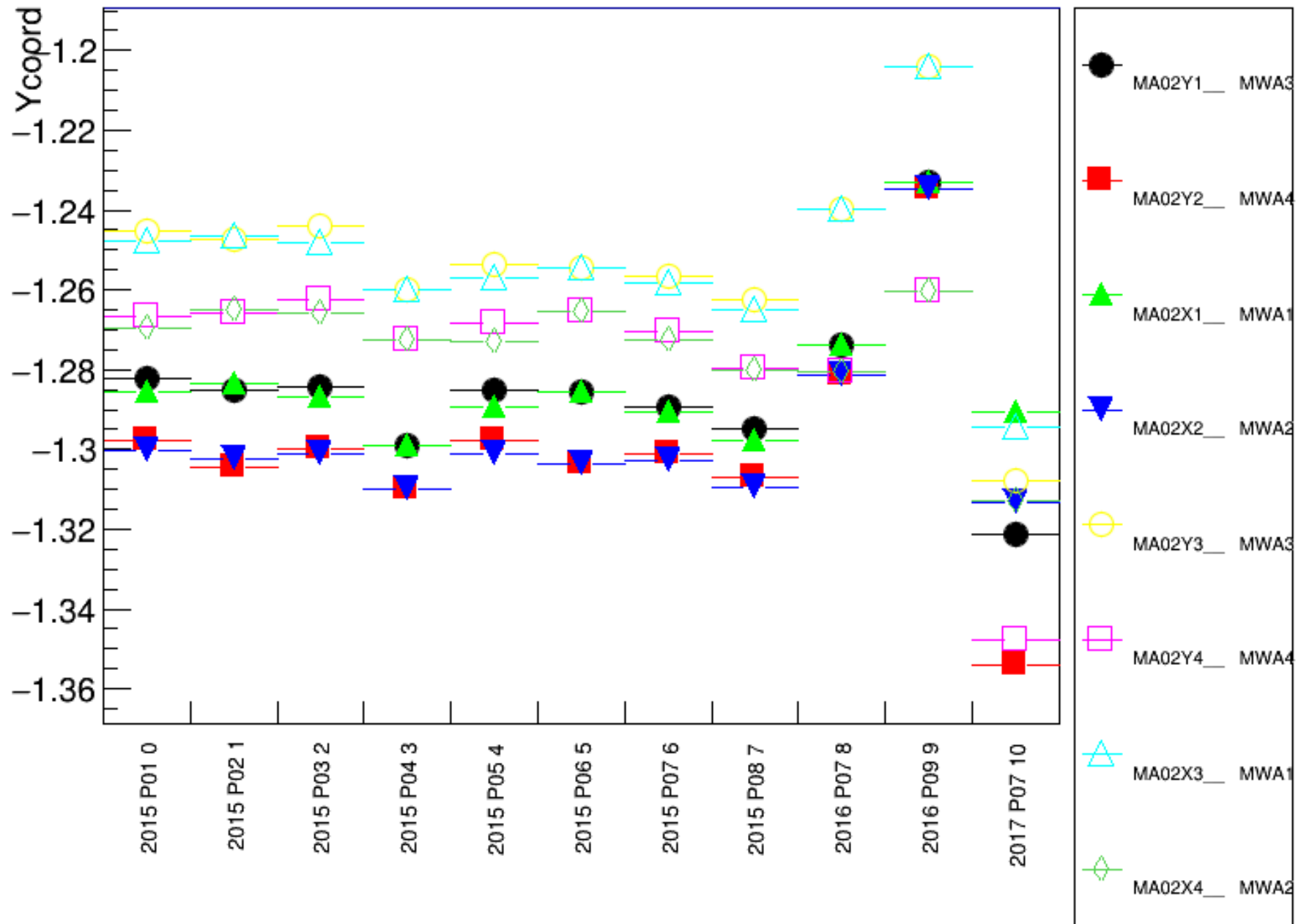
MA01, Y



MA02, X



MA02, Y



MB01, X

