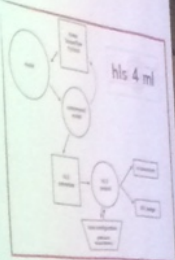


The frontier: bring DL to L1

- The L1 trigger is a complicated environment
- decision to be taken in ~10 μsec
- only access to local portions of the detector
- processing on Xilinx FPGA, with limited memory resources
- Some ML already running @L1
- CMS has BDT-based regressions coded as look-up tables
- Working on DL solutions @L1 library



HLSAML: CEPP/ML/INT presentation
The debut of Connecting The Dots 2018 in Seattle (March 2018)

