



# Update of DS BLM families

with Run I threshold model

**T. Medvedeva**

February 27, 2018

# DS BLM Families:

- THRI\_B1.1\_MB 1 BLM
- THRI\_B1.2\_MB 85 BLMs
- THRI\_B1.3\_MB 14 BLMs
- THRI\_B2.2\_MB 88 BLMs
- THRI\_B2.3\_MB 14 BLMs

## DS Families

IP1 + IP5

IP2 + IP8

IP3

IP7

IP4 and IP6

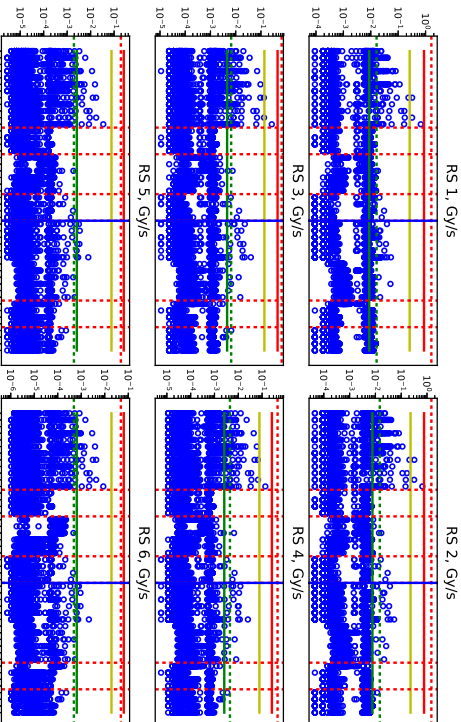
Even Loss Fill

Backup slides

# Point 1 and 5: 26 LBMs

IP1(left) and IP5(right): No coupled BLMs

## IP1 and IP5



DS Families

IP1 + IP5

IP2 + IP8

IP3

IP7

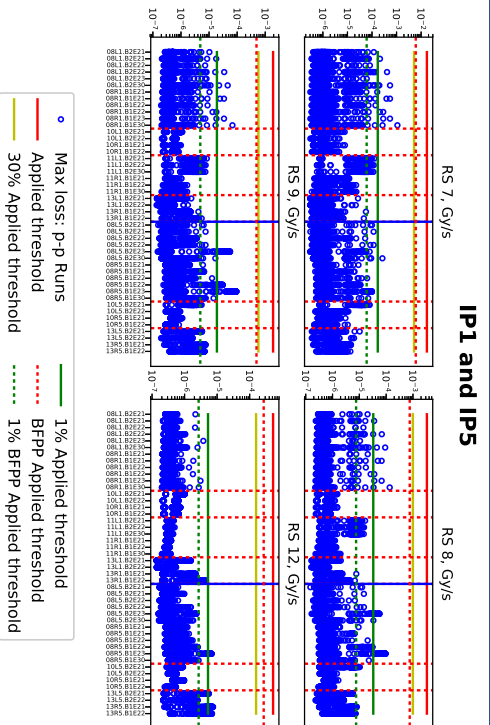
IP4 and IP6

Even Loss Fill

Backup slides

# IP1 and IP5

IP1 (left) and IP5 (right): no coupled BLMs



DS BLM families

4 / 16

T. Medvedeva

DS Families

IP1 + IP5

IP2 + IP8

IP3

IP7

IP4 and IP6

Even Loss Fill

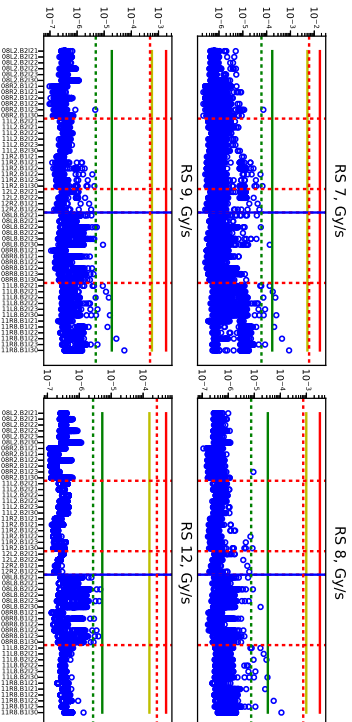
Backup slides



# IP2 and IP8

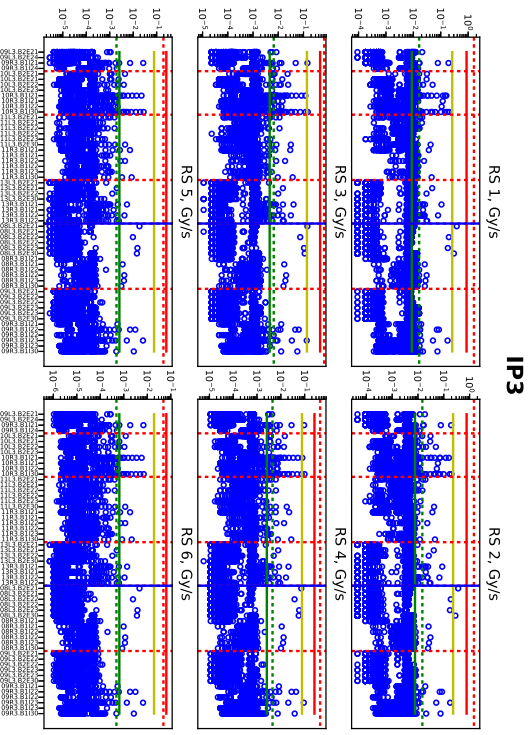
IP2 (left) and IP8 (right): no coupled BLMs

## IP2 and IP8



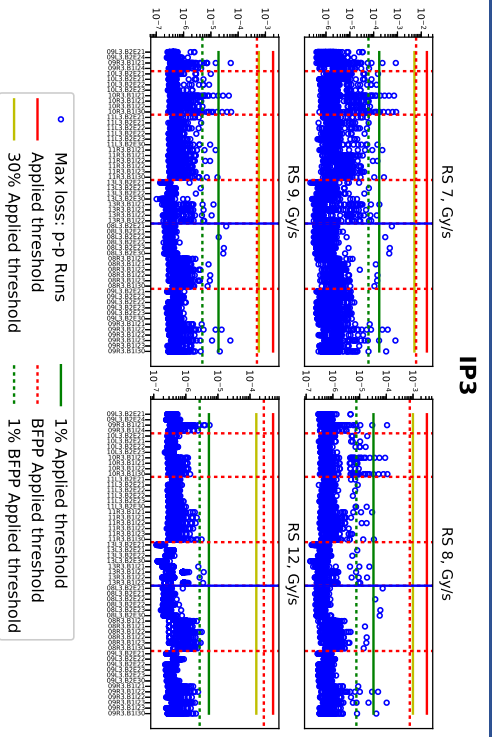
# IP3

IP3 coupled BLMs (left) and regular BLMs (right)



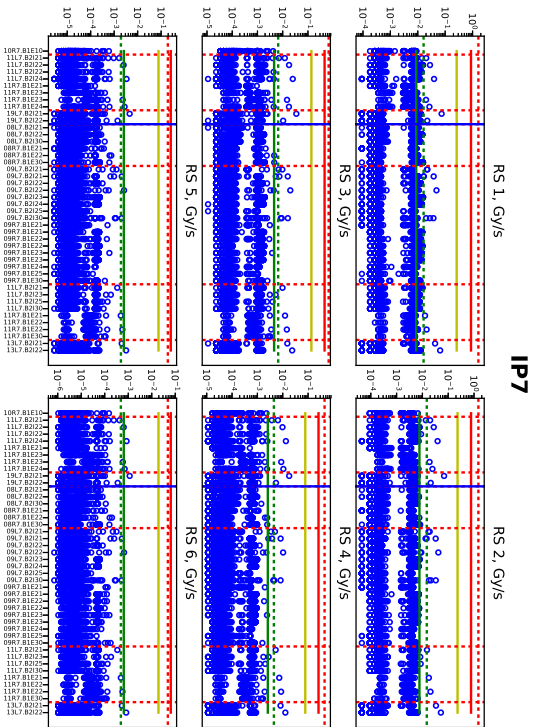
# IP3

IP3 coupled BLMs (left) and regular BLMs (right)





## IP7 coupled BLMs (left) and regular BLMs (right)





# IP4 and IP6

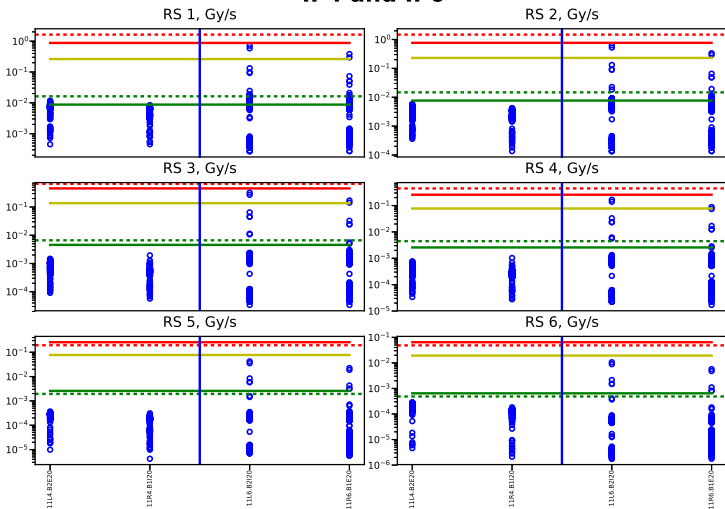
IP4 BLMs (left) and IP6 BLMs (right): no coupled BLMs

DS BLM families

11 / 16

T. Medvedeva

## IP4 and IP6



DS Families

IP1 + IP5

IP2 + IP8

IP3

IP7

IP4 and IP6

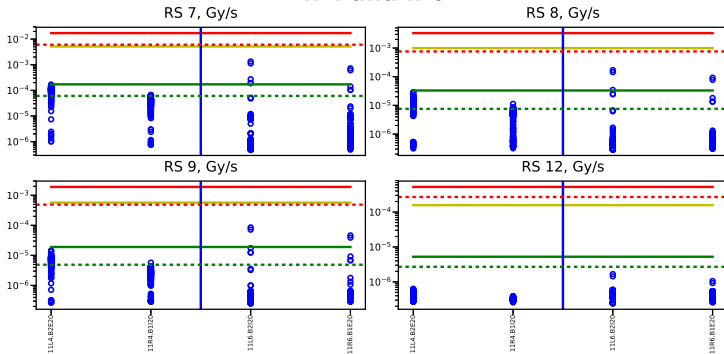
Even Loss Fill

Backup slides

# IP4 and IP6

IP4 BLMs (left) and IP6 BLMs (right): no coupled BLMs

## IP4 and IP6



- Max loss: p-p Runs
- Applied threshold
- 30% Applied threshold
- 1% Applied threshold
- - - BFPP Applied threshold
- - - 1% BFPP Applied threshold

DS Families

IP1 + IP5

IP2 + IP8

IP3

IP7

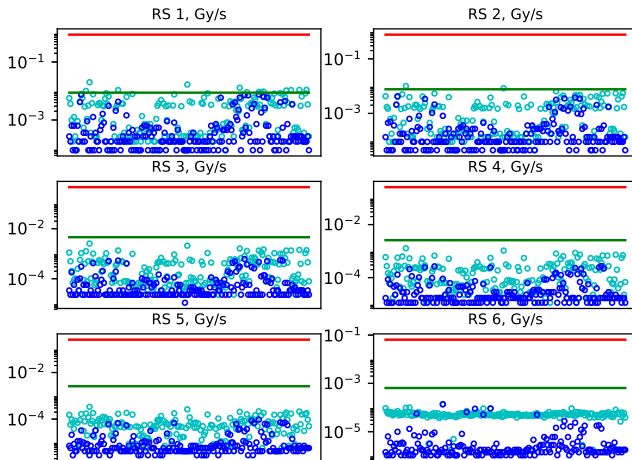
IP4 and IP6

Even Loss Fill

Backup slides

# Fill with Even Losses in High RSs

It was identified as first fill in 2016 with "STABLE" beams (and first "STABLE" beams segment in that fill): fill 4725 on 2016/03/18 (16:28:32 - 17:05:21)



DS Families

IP1 + IP5

IP2 + IP8

IP3

IP7

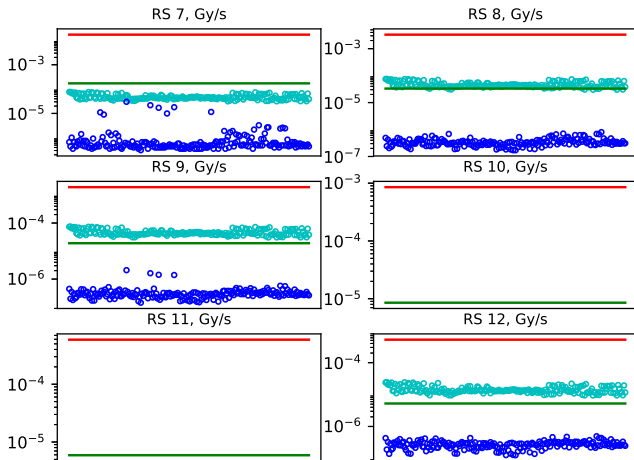
IP4 and IP6

Even Loss Fill

Backup slides

# Fill with Even Losses in High RSs

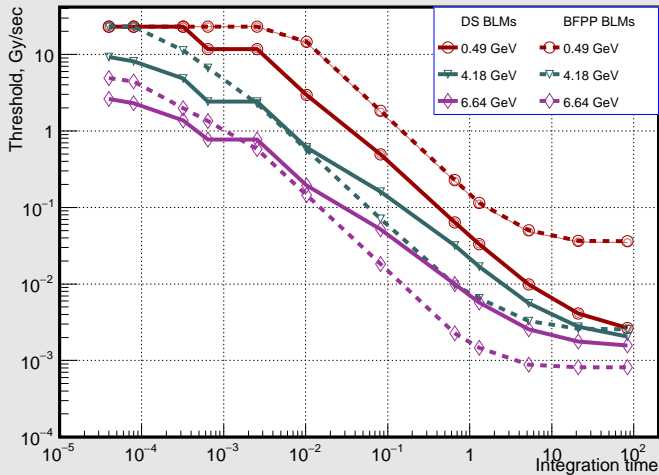
It was identified as first fill in 2016 with "STABLE" beams (and first "STABLE" beams segment in that fill): fill 4725 on 2016/03/18 (16:28:32 - 17:05:21)



# Comparison to BFPP BLM Family

Thresholds are the same for all five families.

BLM Thresholds



DS Families

IP1 + IP5

IP2 + IP8

IP3

IP7

IP4 and IP6

Even Loss Fill

Backup slides

# Current Master Thresholds of the DS BLMs

Thresholds are the same for all five families.

DS Families

IP1 + IP5

IP2 + IP8

IP3

IP7

IP4 and IP6

Even Loss Fill

Backup slides

