

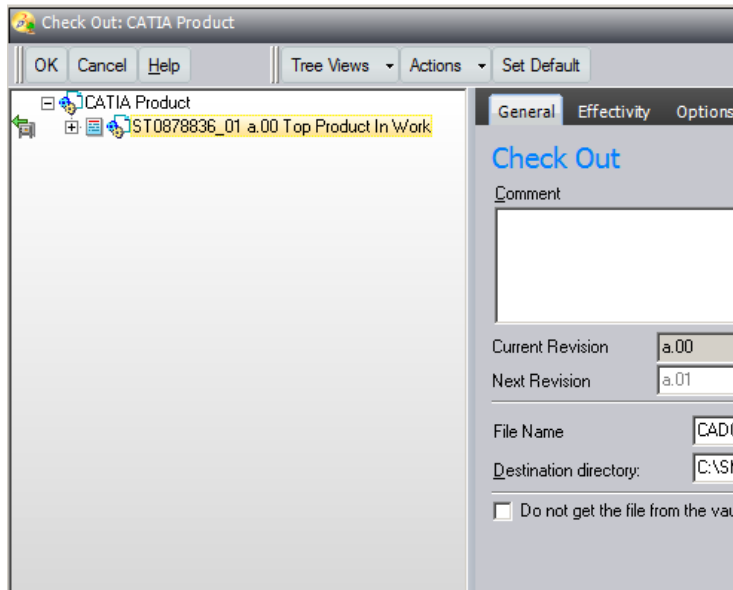
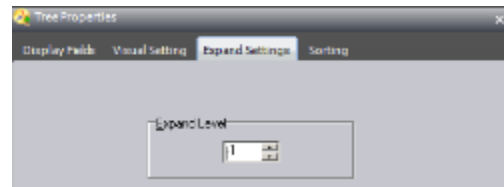
Tips and tricks

22.03.2018 – E.Urrutia

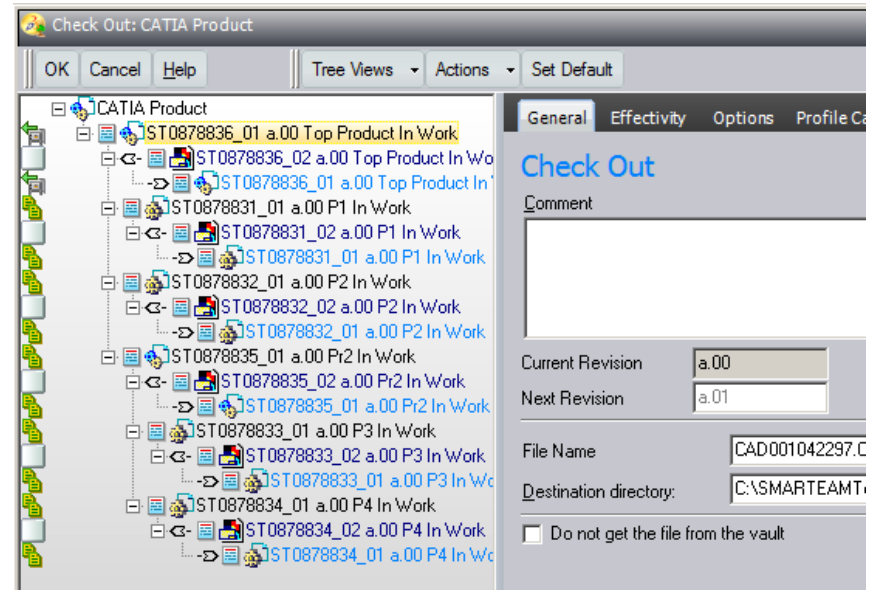
Expand settings in Smarteam

In the Smarteam Check Out contextual menu «Tree properties», the expand Settings option can be modified.

According number chosen, the Check out behavior will be modified. It's highly recommended to put 0 to save time during Check out operation



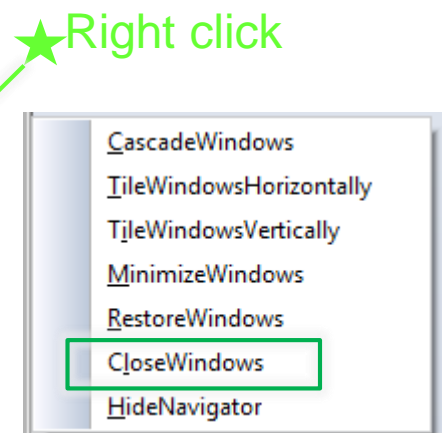
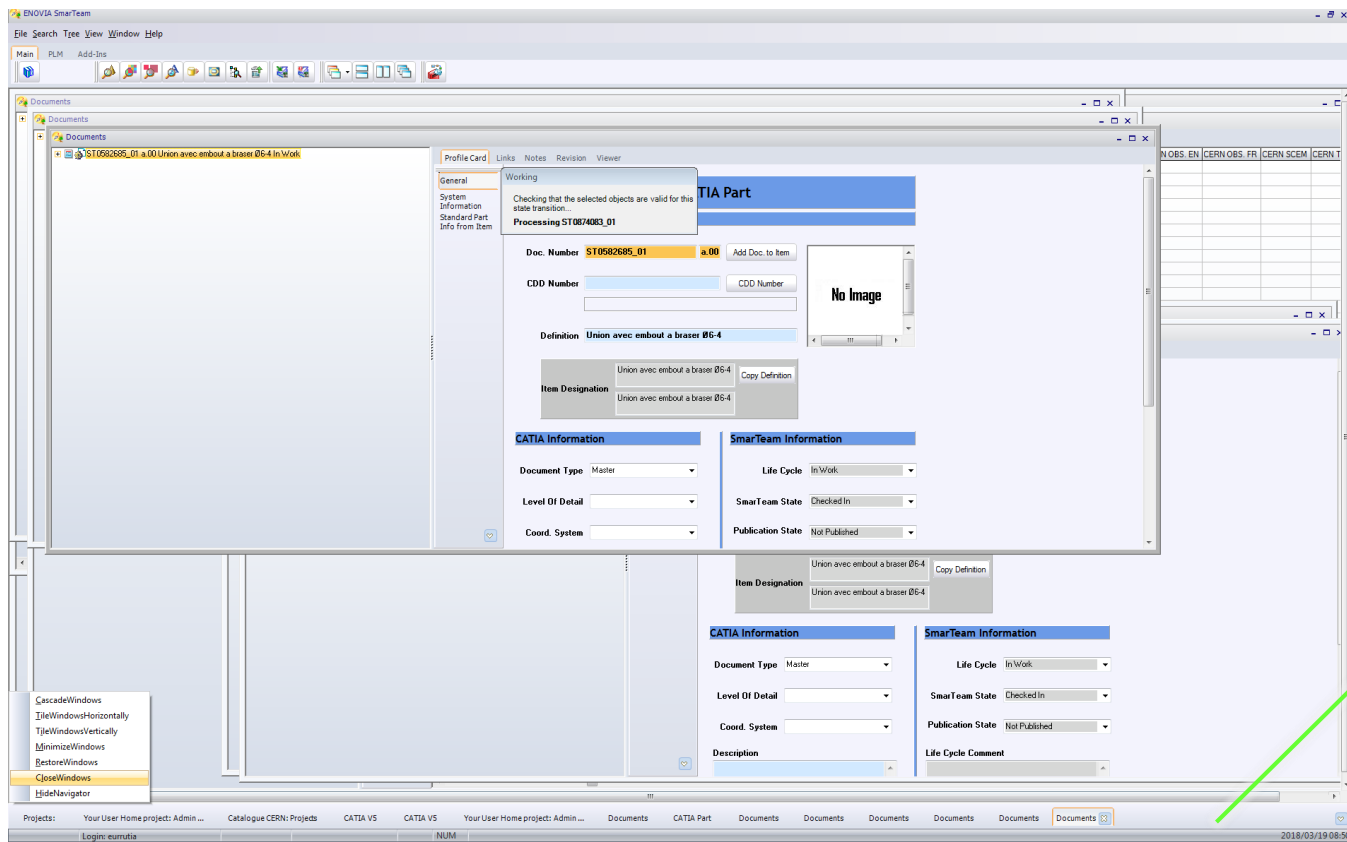
Check out with «0»



Check out with «-1»

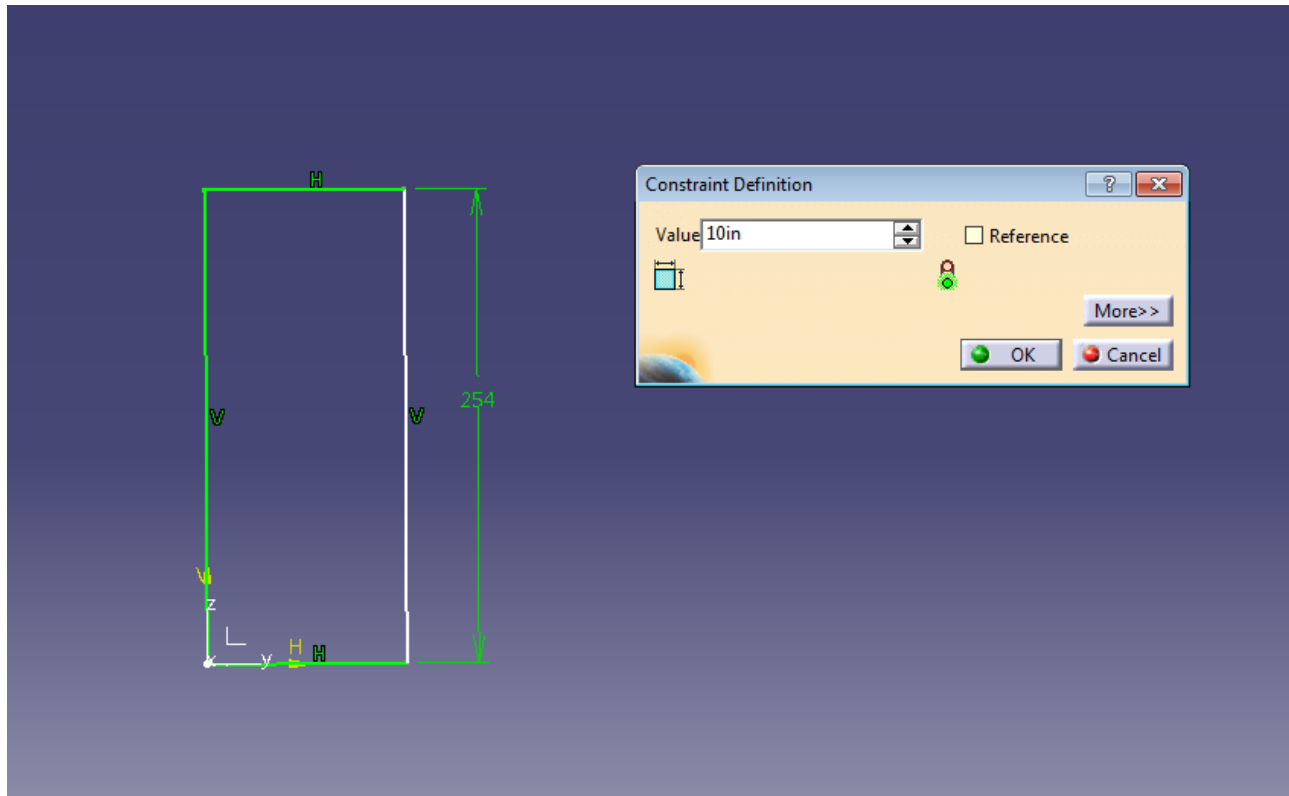
Smarteam : windows simultaneous closure

All windows in Smarteam can be closed simultaneously via contextual menu



Units recognition in dimension boxes

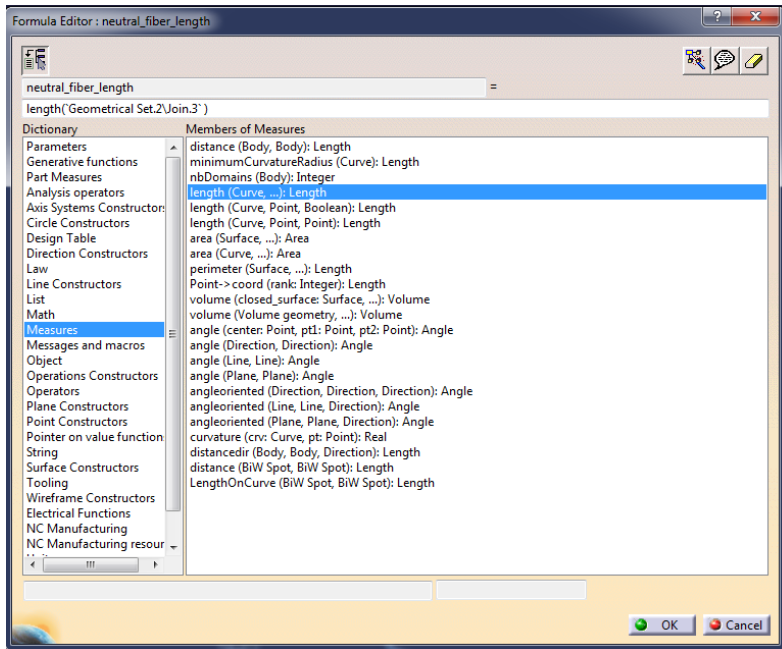
By typing unit symbol in value text box, dimensions are automatically converted in the CATIA working unit



Rounded results

In CATIA formula editor, results can be rounded as needed by adding text string around formula

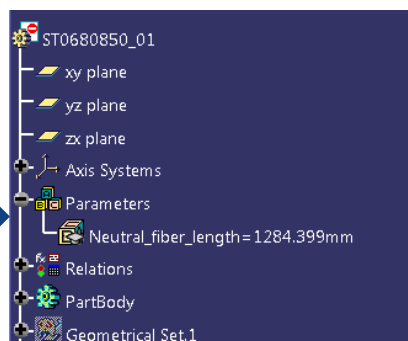
In the example below, text added in red allows to display result with 1 number after the comma



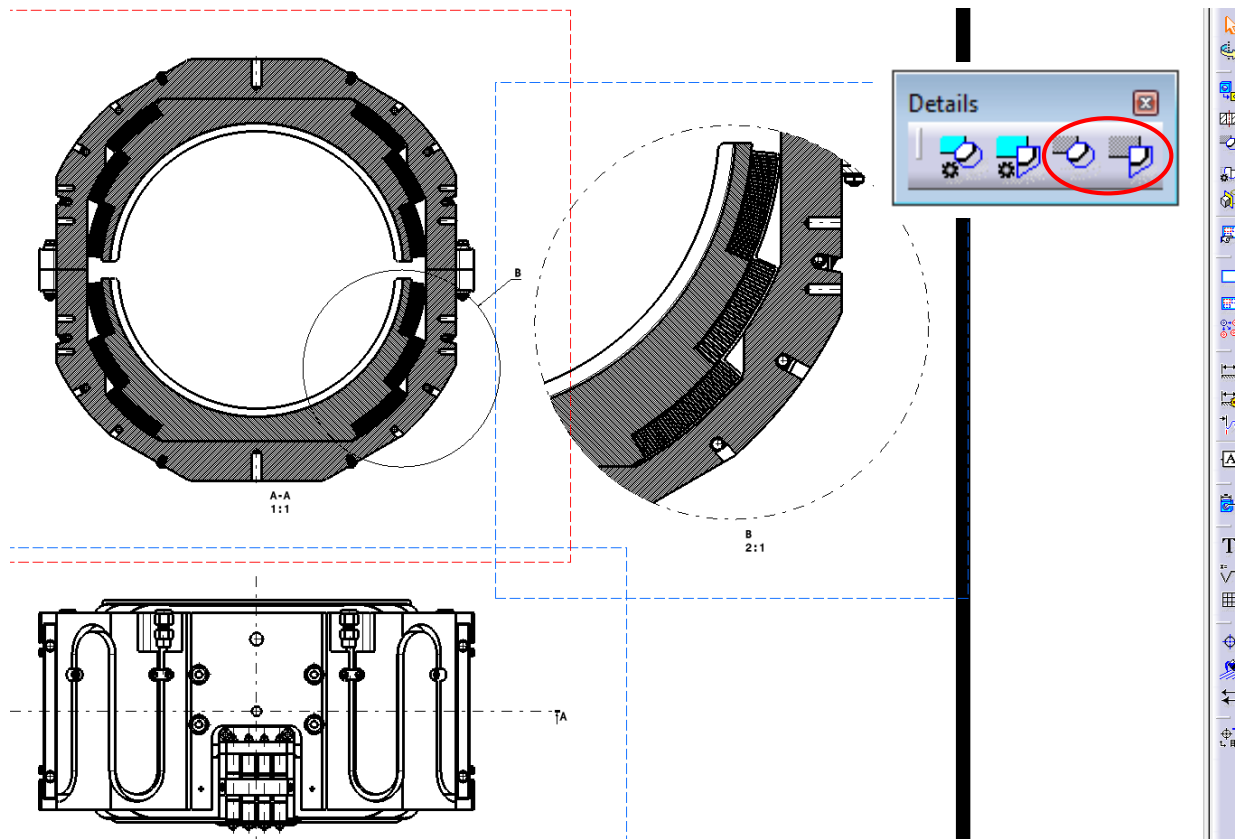
`round((length('Geometrical Set.2\Join.3`')), "mm", 01)`

0 : xxmm
01: xx,xxmm
02: xx,xxmm
etc

You can use 02, 03, etc. to choose number of characters after the comma



Quick detail views : characteristics



Quick detail view function is based 2D representation and allows update quicker than standard detail view :

Several things to be aware of with this function :

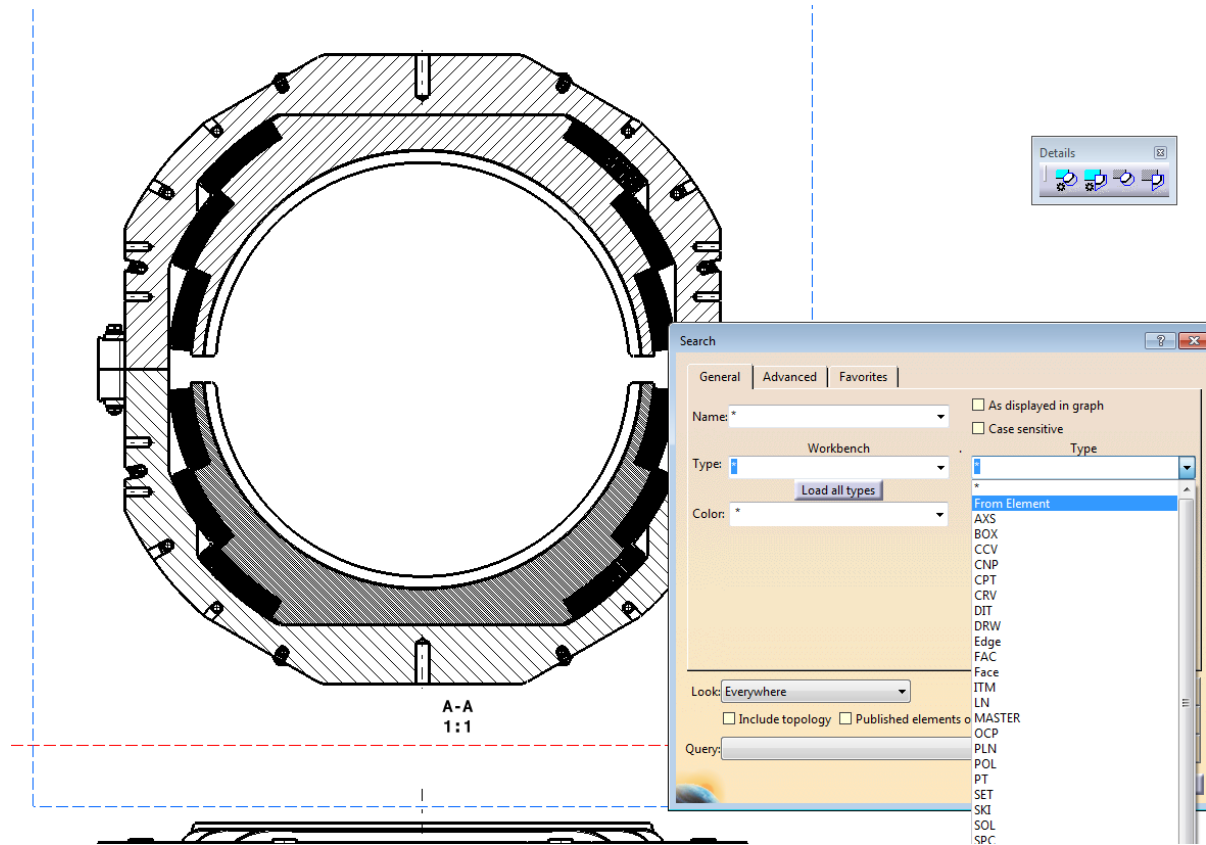
- View geometry frame remain in the detail view
- A manual update can be necessary in the case of overload properties operation

Hatching treatment in drawings

In the case of a large amount of hatching to correct in drawings, a good practice possible is to select all at once, hide them and correct them in the hidden level

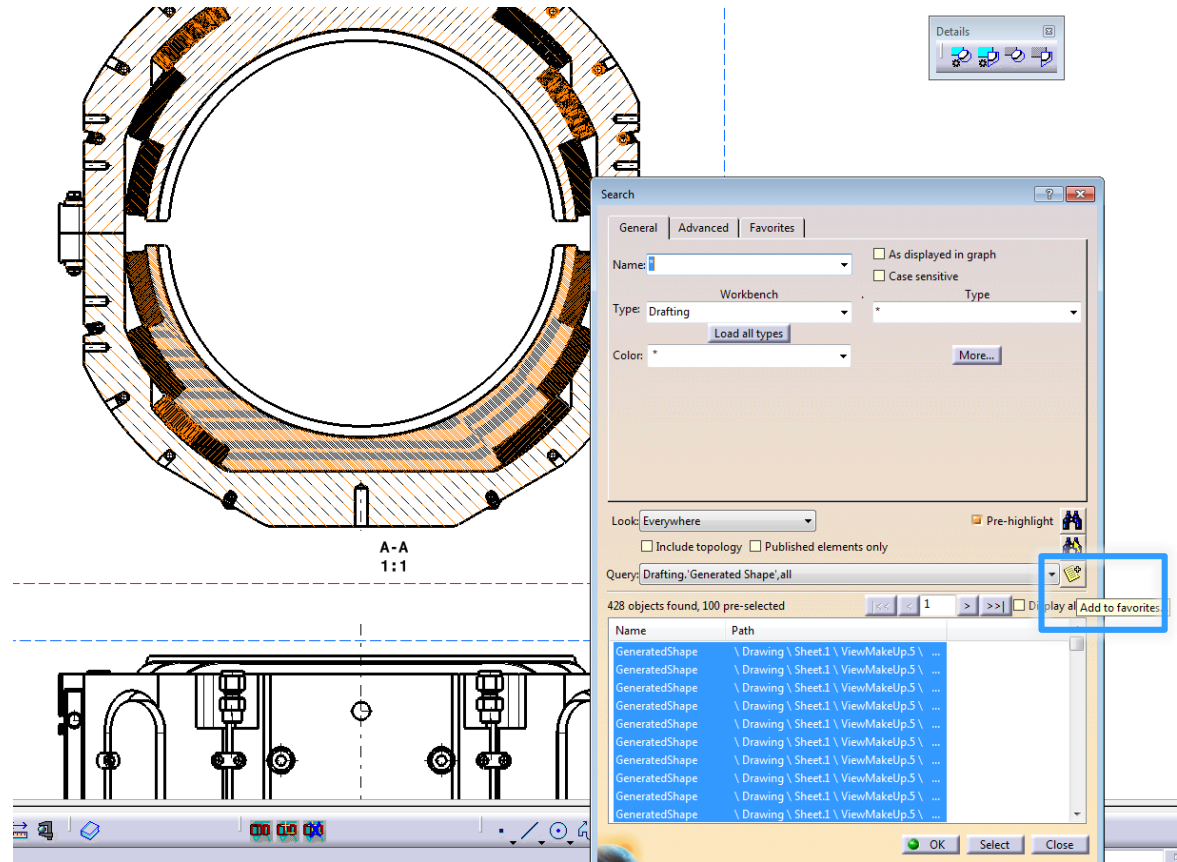
1. Perform «search from element» and select hatching in the drawing

CTRL+F



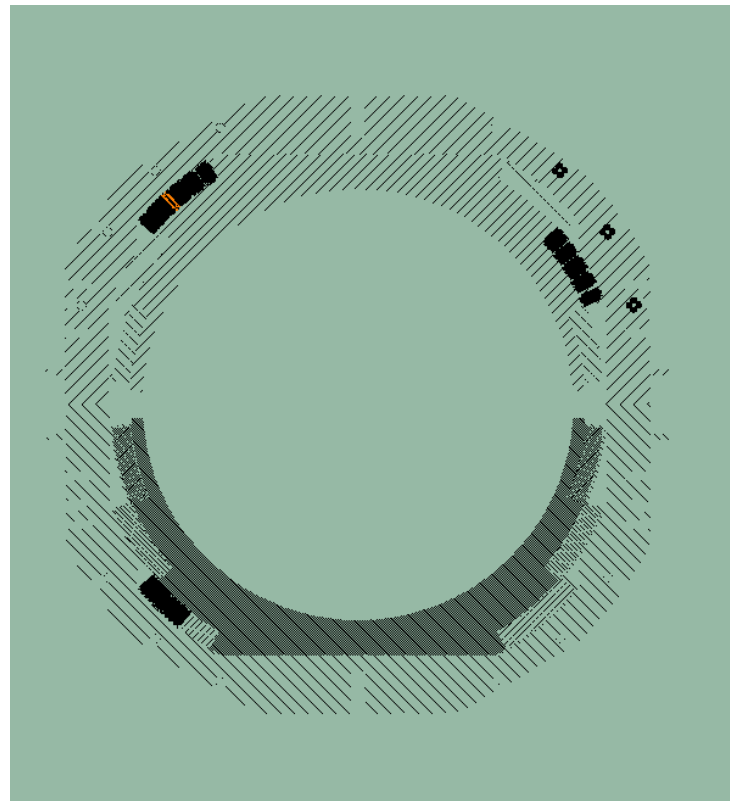
In the case of a large amount of hatching to correct in drawings, a good practice possible is to select all at once, hide them and correct them in the hidden level

2. You can save this type of search for other drawings by clicking «Add to favorite» box
3. Click on select

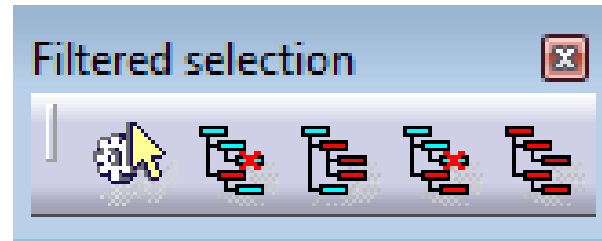


In the case of a large amount of hatching to correct in drawings, a good practice possible is to select all at once, hide them and correct them in the hidden level

4. Click on F2 to hide them and switch to the hidden level to treat wrong hatchings easily



Filtered selection



1. 2. 3. 4.

1. all the Instances except the one that you first selected (Inversion Mode),
2. or the "Children" (sub-products) of one or several Part Numbers within the Specification Tree (Children Mode)
3. or all elements, except "Children", other than those you had selected first.
4. or "All" the CATIA products (All Mode).