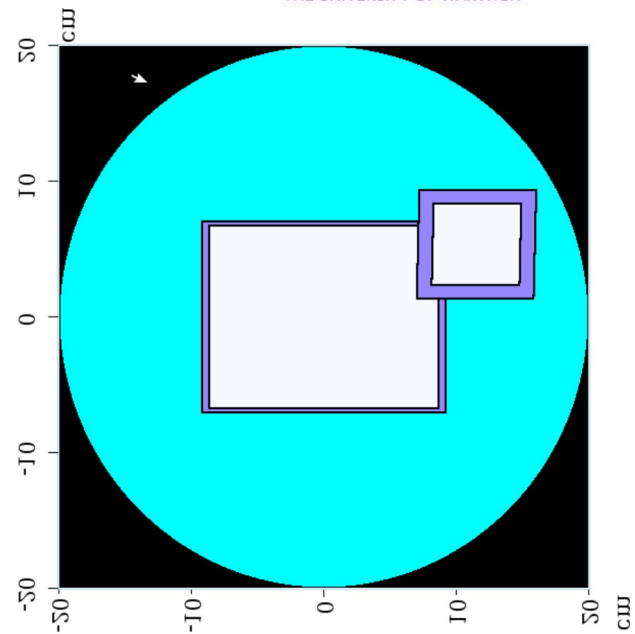
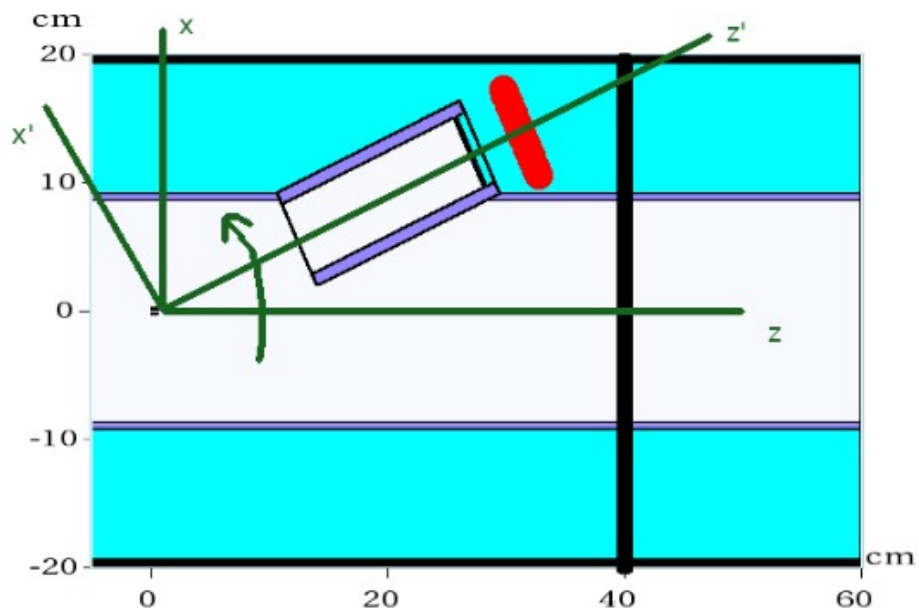




Target Model

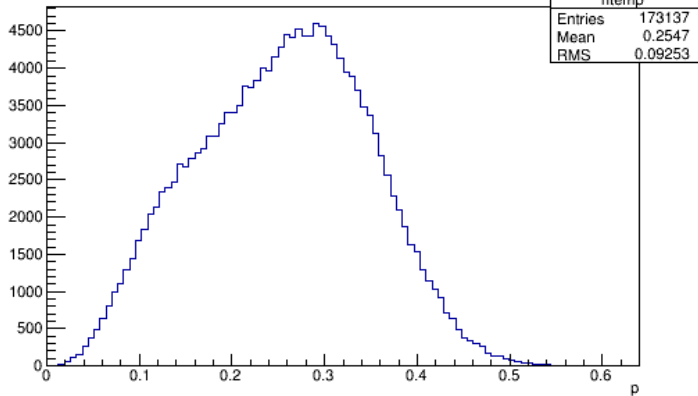
T Lord





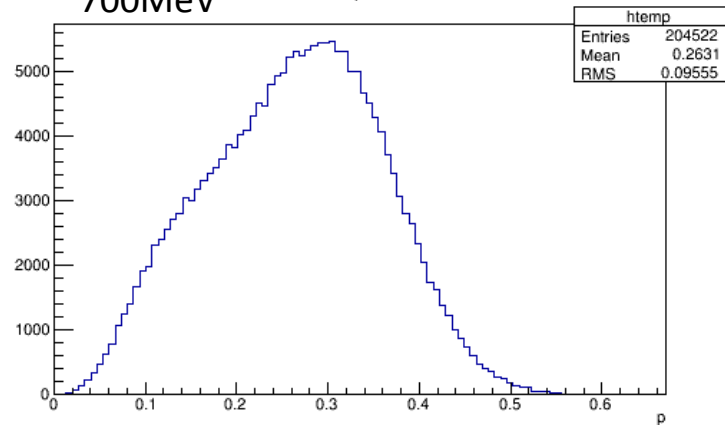
675MeV

p



700MeV

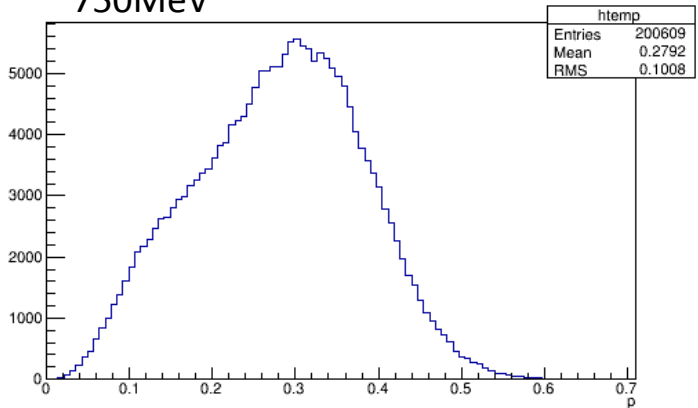
p



ARWICK
UNIVERSITY OF WARWICK

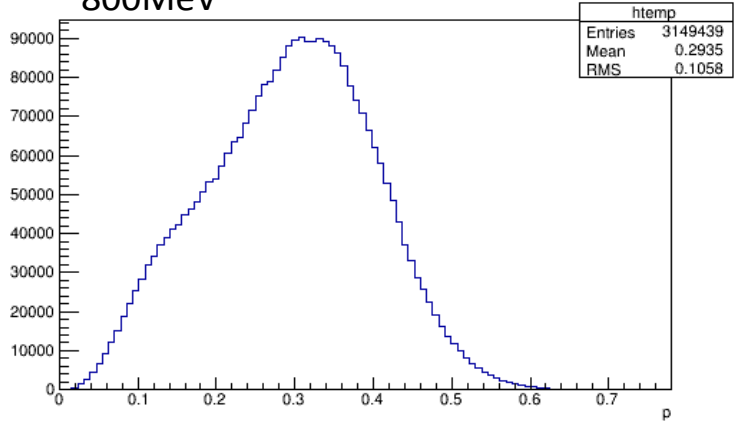
750MeV

p



800MeV

p

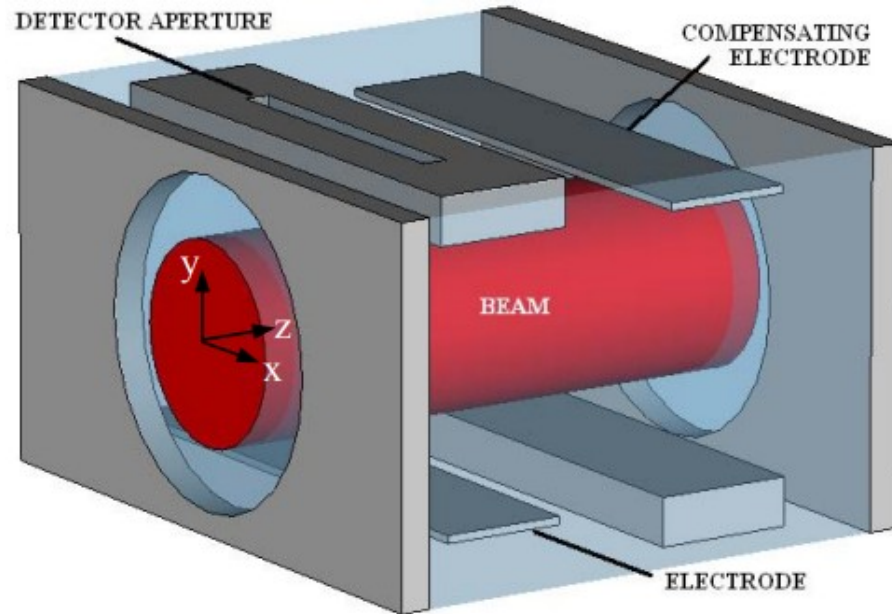


Residual Gas Ionisation Monitors

- RGI readings taken every 100microseconds, starting at -0.4ms (injection start) to 9.9ms (beam extraction)
- Space charge effect correction of $\sim 20\%$ to measured beam width from RGIs
- Can correlate with dip interval data and check BCD vs energy and run to intervals as short as necessary (up to 100microseconds)



Residual Gas Ionisation Monitors



RGI profile monitor geometry

- RGI readings taken as a series of voltages at positions along the detector aperture from -117mm to 117mm (6mm intervals)
- Question of how to include space charge effects into consideration of proton intensity distribution?

RATS Trigger - Target Delay

