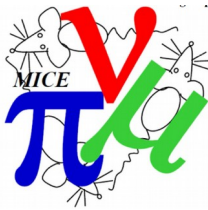


Dipole model

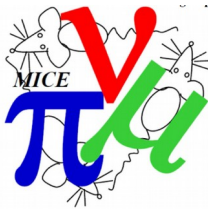
P. Franchini

MICE Analysis Workshop
April, 12 2018

Motivation



- Previous survey done by Henry in 2013
- Longstanding effort to understand/improve the MC

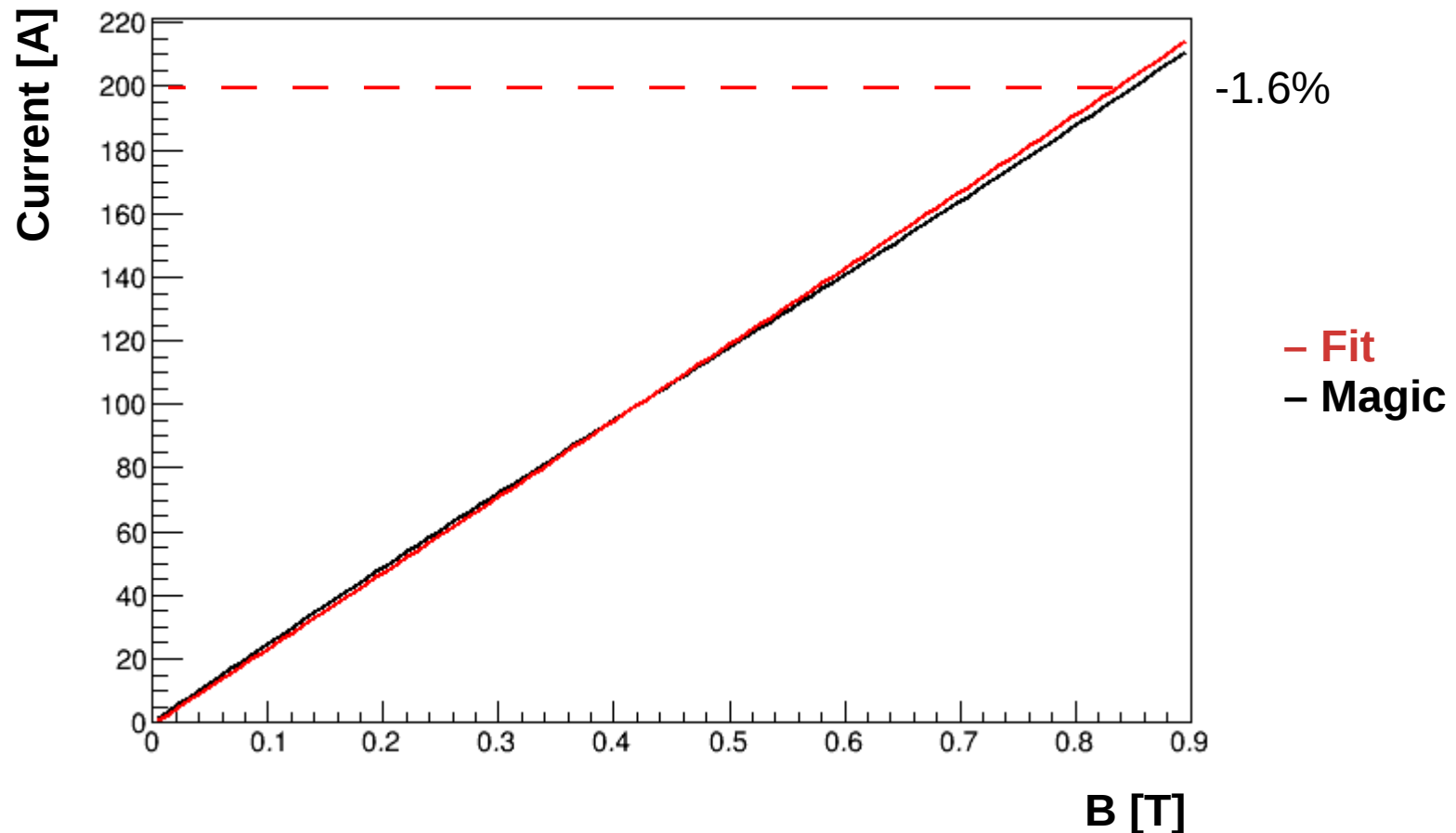


Summary of the surveys

- D2
 - First measurement of the field in Jan. 2017
 - 1 Hirst Gaussmeter (1 axis)
 - Another one in Feb. 2018
 - 2 Hirst Gaussmeters (1 axis)
 - 1 Nikhef Hall probe (3 axis)
- D1
 - First one outside of the vacuum pipe in Aug. 2017
 - Next May, inside the beam pipe

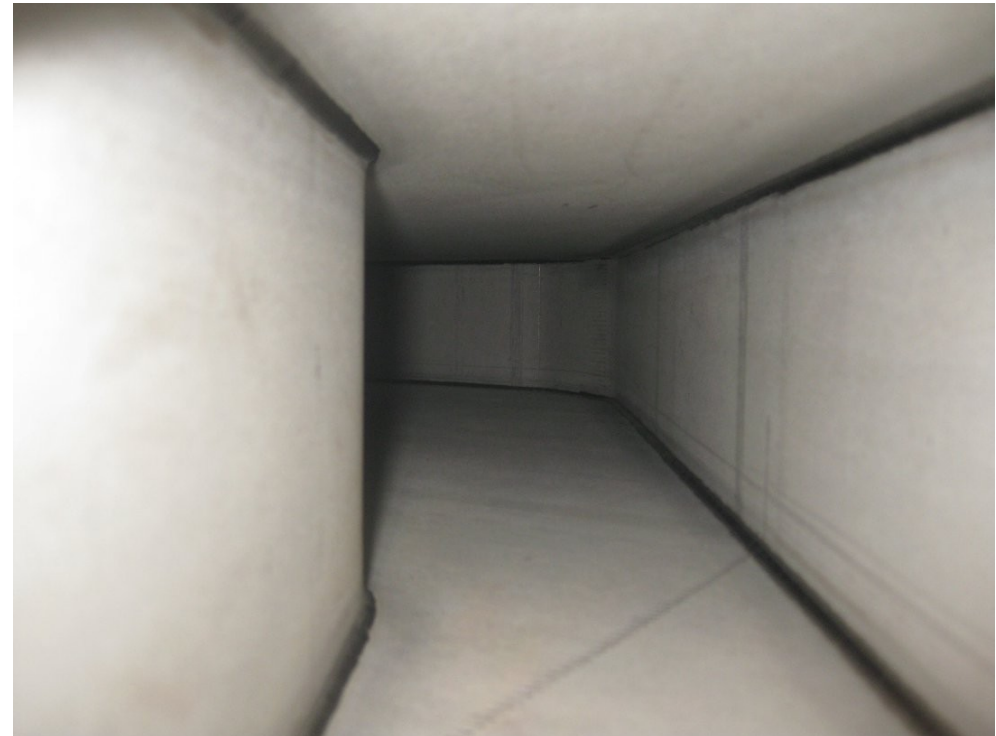
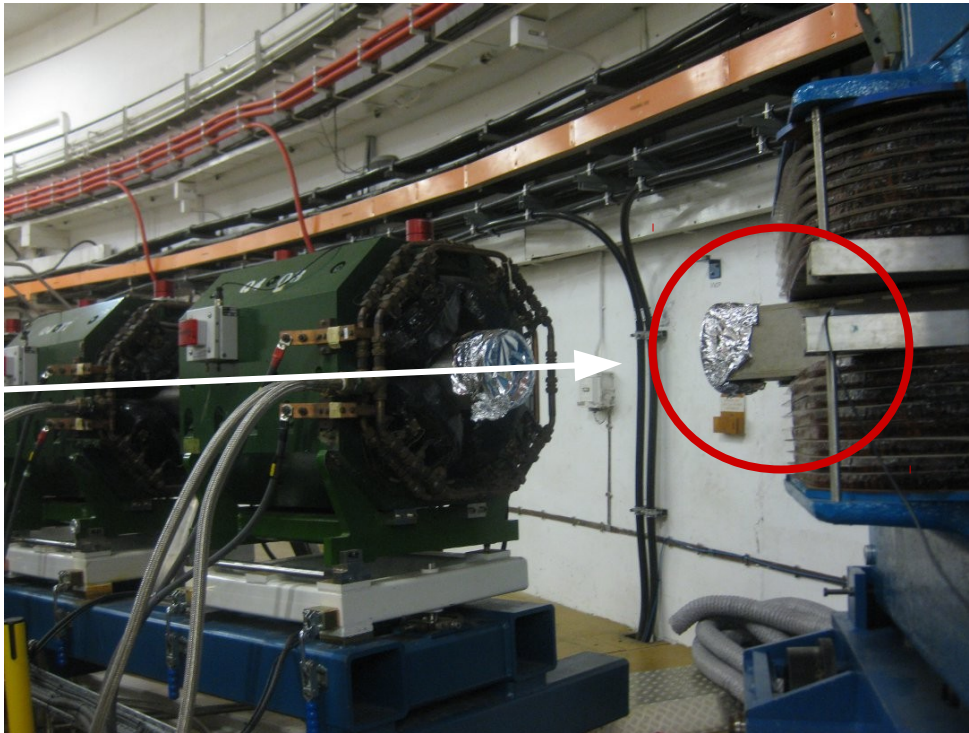
Dipole D2

- Max discrepancy in the order of few percent



Dipole D1

- Preliminary measurement outside of the beampipe is compatible with the saturation curve of D2





Conclusion

- Measurements and conclusions to be finalized in a MICE Note
- Difference between the saturation curve used in the G4BL datacards and the measured one cannot account for the MC vs Data discrepancy