

From prototype to production

Jeremy Coles
University of Cambridge

UKTO Collaboration Meeting
The Cosener's House, Abingdon, UK
15th March 2018

Inputs (use cases) – examples 1

EUCLID

- Object stores
- CVMFS
- Knowledge sharing
- Site “Services”

SKA (AENEAS)

- CVMFS
- (WL) DIRAC
- Large memory nodes

LSST

- UK DAC
- Knowledge sharing
- Databases
- **Effort**

JASMIN

- Increasing Interdisciplinary researchers
- Managed data
- Direct posix access

Inputs (use cases) – examples 2

aLIGO

- Burst onto cloud
- @Home
- GPUs
- Containers
- Federated access
- OS varies
- Scheduler varies (HTC)
- JupyterHub
- Pilot factory
- Gluster/Lustre
- CVMFS

CCFE/UKAEA

- HTC
- Machine learning/
probabilistic
- European Open
Science Cloud
- Scale-out
- Provenance
- 16GB/core. Inband.
- Eurofusion AAI
- HDF5 – NoDB. HDPA
- Data Lake into data
centre performance

ALC

- Catalogues
- ML/AI
- Security
- SCARF
- Cloud
- GPUs

Inputs (use cases) – examples 3

DIAMOND

- Supporting end users
- Open Data
- OpenStack
- Cloud bursting
- Archiving/access
- savu

ISIS

- DAaaS (Data Analysis)
- No to certificates/ease of use
- On-call

ULTRA

- Data Analysis Platform

Other

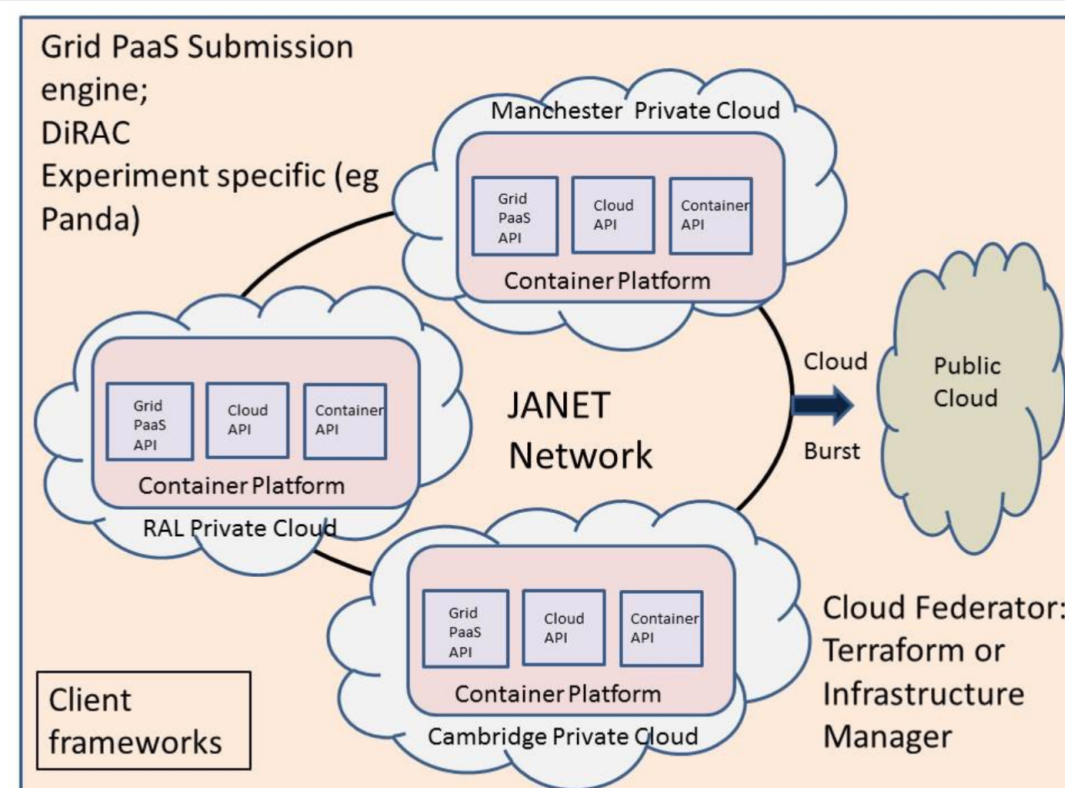
- Support to interface software
- Common tools

What are we trying to achieve in the short and long terms?

“A common e-Infrastructure for STFC sciences”

- What assumptions are being made?
- Which use-cases can and will overlap UKT0 activities? (What does the proposal say about delivery?).
- **Expectations clearly need aligning as we have a broad vision – more details are still needed.**
- Timescales/programme (important to allow evolution)
 - We will need a phased programme of work with clear priorities.
 - Initial baseline – carefully share components. Which ones?
 - With what subset of UKT0 members are we starting? What resources do we expect to be running and running what type of work and by when?
 - What dependencies do we have on the governance structure?

CPU – is this the whole picture for 2018?



- Details are missing.
- Who is using these resources?
- Do we need to be more inclusive?

To get the discussion started based on a quick survey... current landscape

AREA	UKTO		EUCLID	UKAEA	STFC SCD/ ALC/SIS	DIAMOND	ALIGO	LSST	SKA/Others	HEP
	Now	Future								
Support			Started	Exists	Exists	FP	Exists	Started	Needed	Exists
Accounting			Needed	Needed	Exists	Exists	Exists	Needed	Needed	Exists
Services			Exists					Needed		Exists
Security				!	Exists	Started	Exists		Needed	Exists
Monitoring			Started	Started	Exists	Exists			Needed	Exists
"Software"			Exists	Started	Exists	Exists	Started	Needed	Needed	Exists
"Core"									Needed	Exists
Policy/interoperation/ management					Exists	Exists			Needed	Exists
Ad-hoc/Dev							Exists		Needed	Exists
Other										

- Exists
- Started
- Needed