

PS status 5 July 2018

Sandy Easton, Frank Tecker, on behalf of PS operations and supervisor team



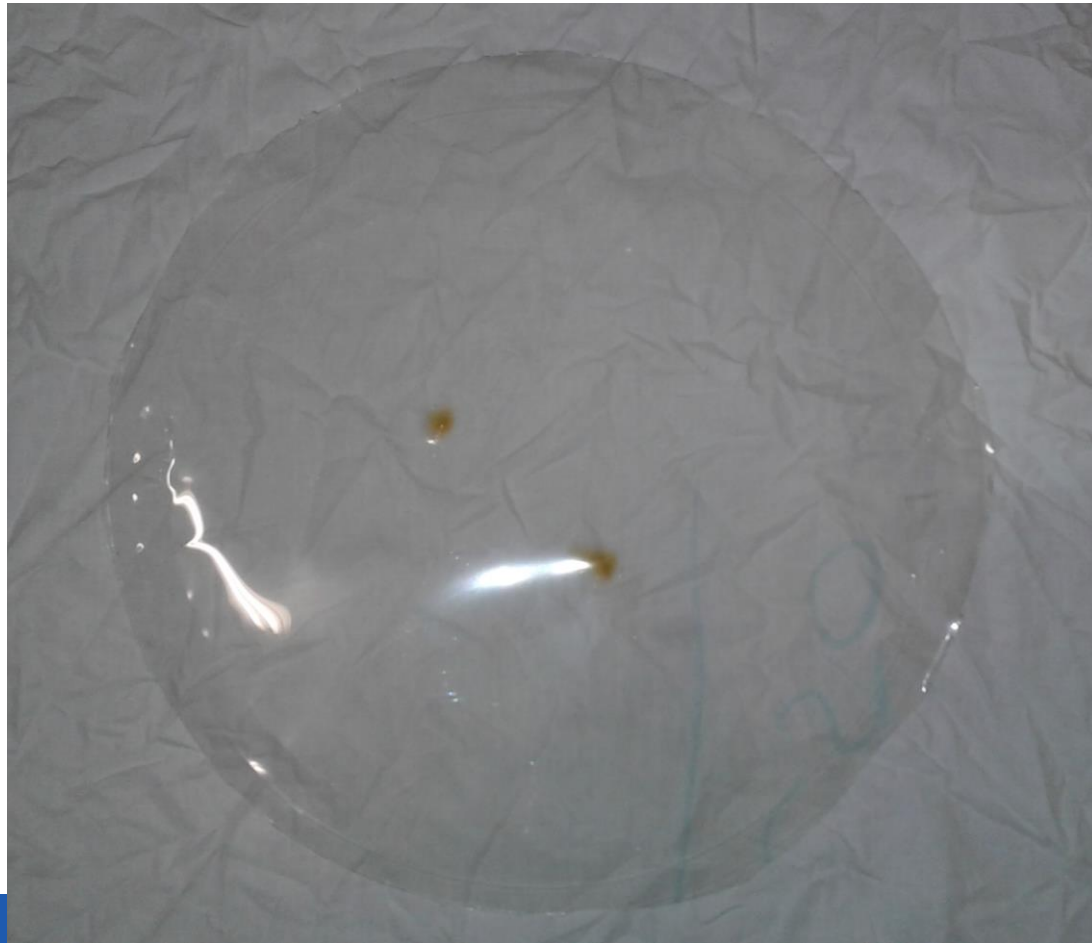
Status of beams

Fixed target beams	Status	Comment
EAST Irrad/North with nTOF Parasitic	Operational	
MTE	Operational	to SPS $\sim 1.5 \cdot 10^{13}$ ppp (tested $1.8 \cdot 10^{13}$)
TOF	Operational	Up to $\sim 8 \cdot 10^{12}$ ppp
AD	Operational	$\sim 1.4 \cdot 10^{13}$ ppp sent to AD
LHC-type beams	Status	Comment
LHC PROBE, LHC INDIV	Operational	
LHC25 (12b, 72b)	Operational	
LHC25 BCMS (12b, 48b)	Operational	

PS Complex Issues

- EAST AREA:

- Vacuum window in the transfer line to the East Area was discovered broken after the restart from ITS1 last week => about 25m of the beam in air.
- Window installed in different location. RP monitor (PAXP502) level went down.
- New window broke and was replaced last week. Since Sunday evening, readings in the RP monitor seem to increase again, indicating that the window is again broken.
- Access on Tuesday revealed window intact but with hot spots
- Was replaced with 175 μ m Mylar foil (try with Alu unsuccessful)
- One major fault due to PSB extraction bumper (8h downtime)
- 87% availability



i Availability

87.0%

i Blocking Faults

34

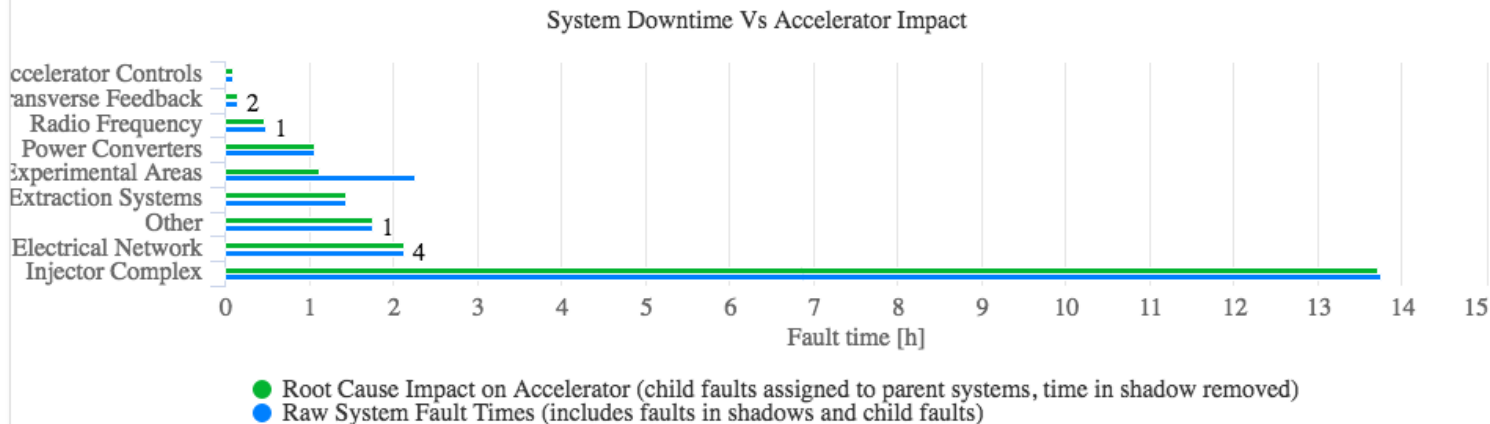
i Total Faults

34

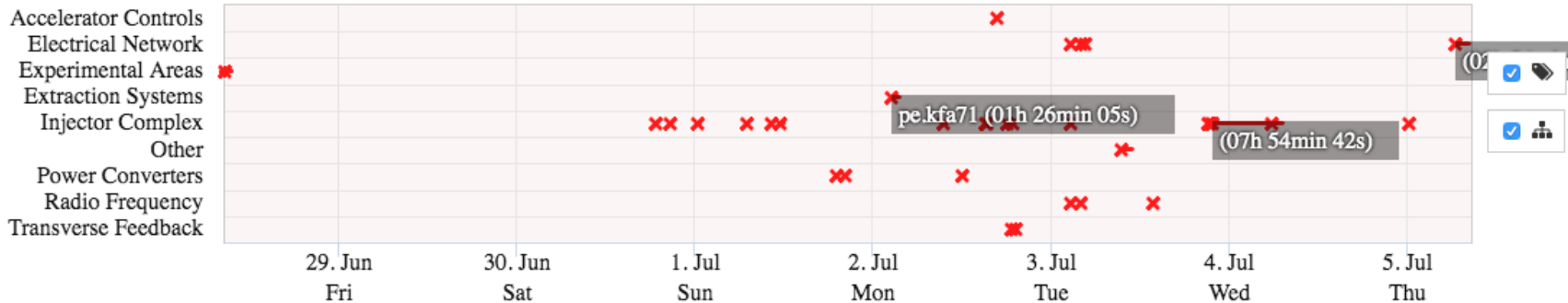
i Fault Duration (overlap excluded)

219h

i Blocking Faults by Root Cause

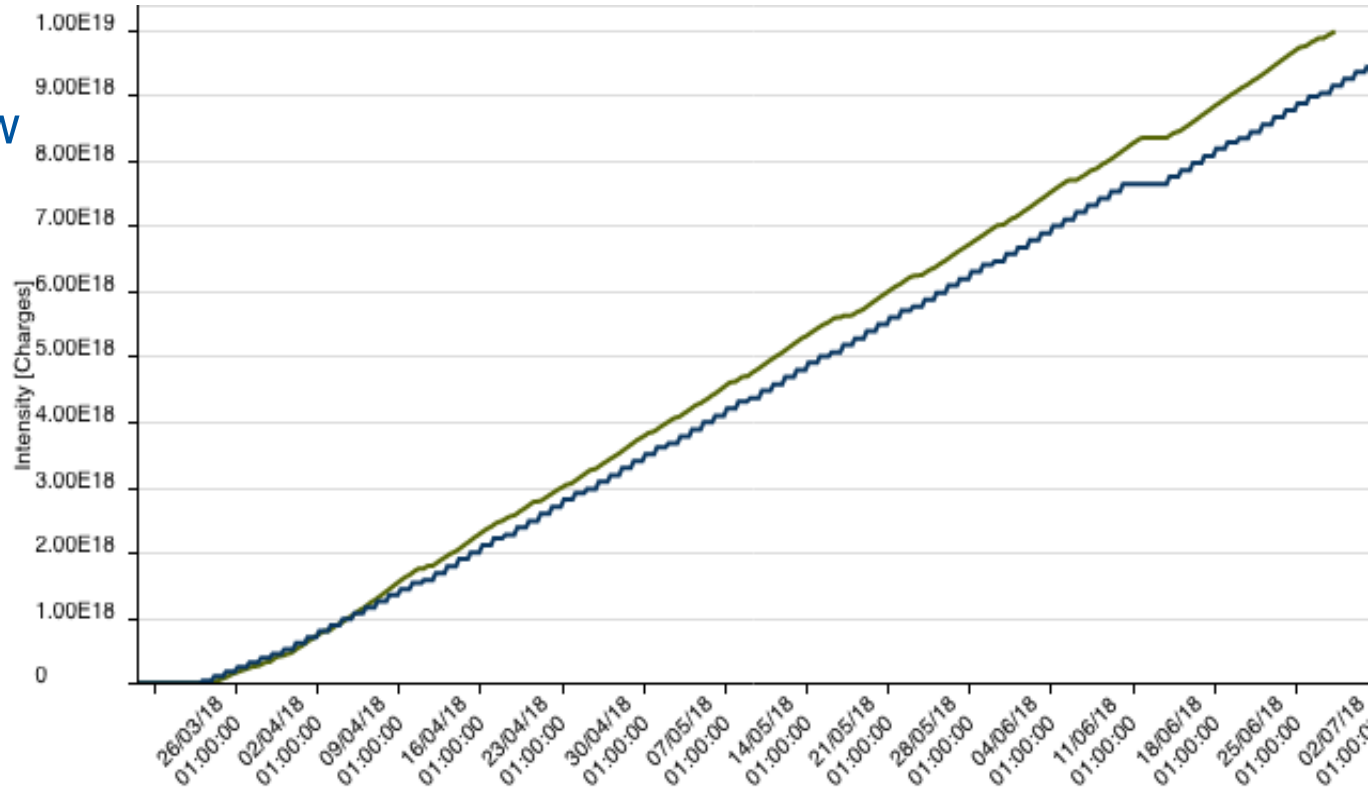


i Faults Timeline



NTOF integrated intensity

- **9.97×10^{18} pot** delivered up to now
- ~9% above estimated intensity
- This is **45.9%** of the total intensity forecasted of **2.17×10^{19} pot**





www.cern.ch