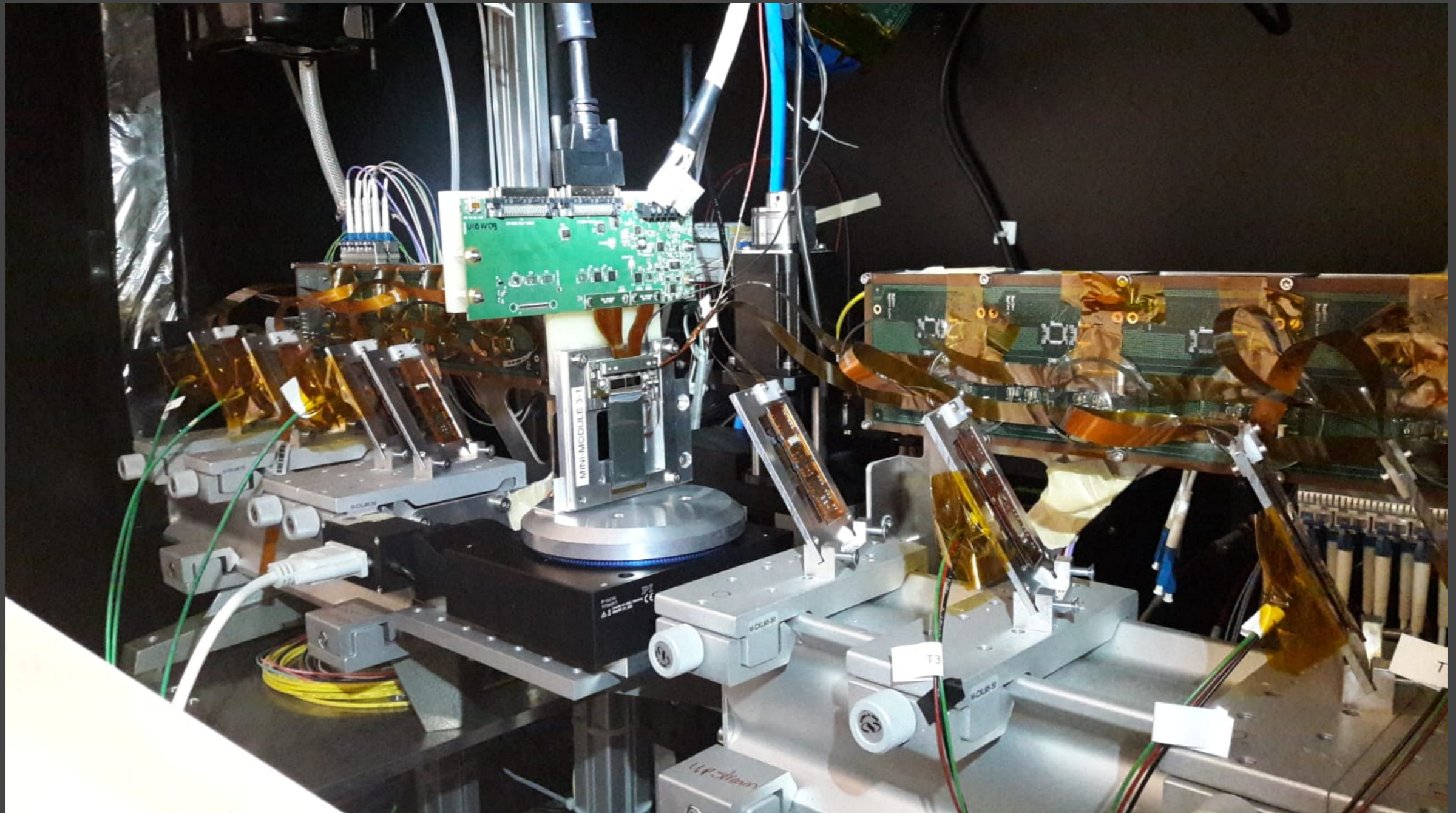
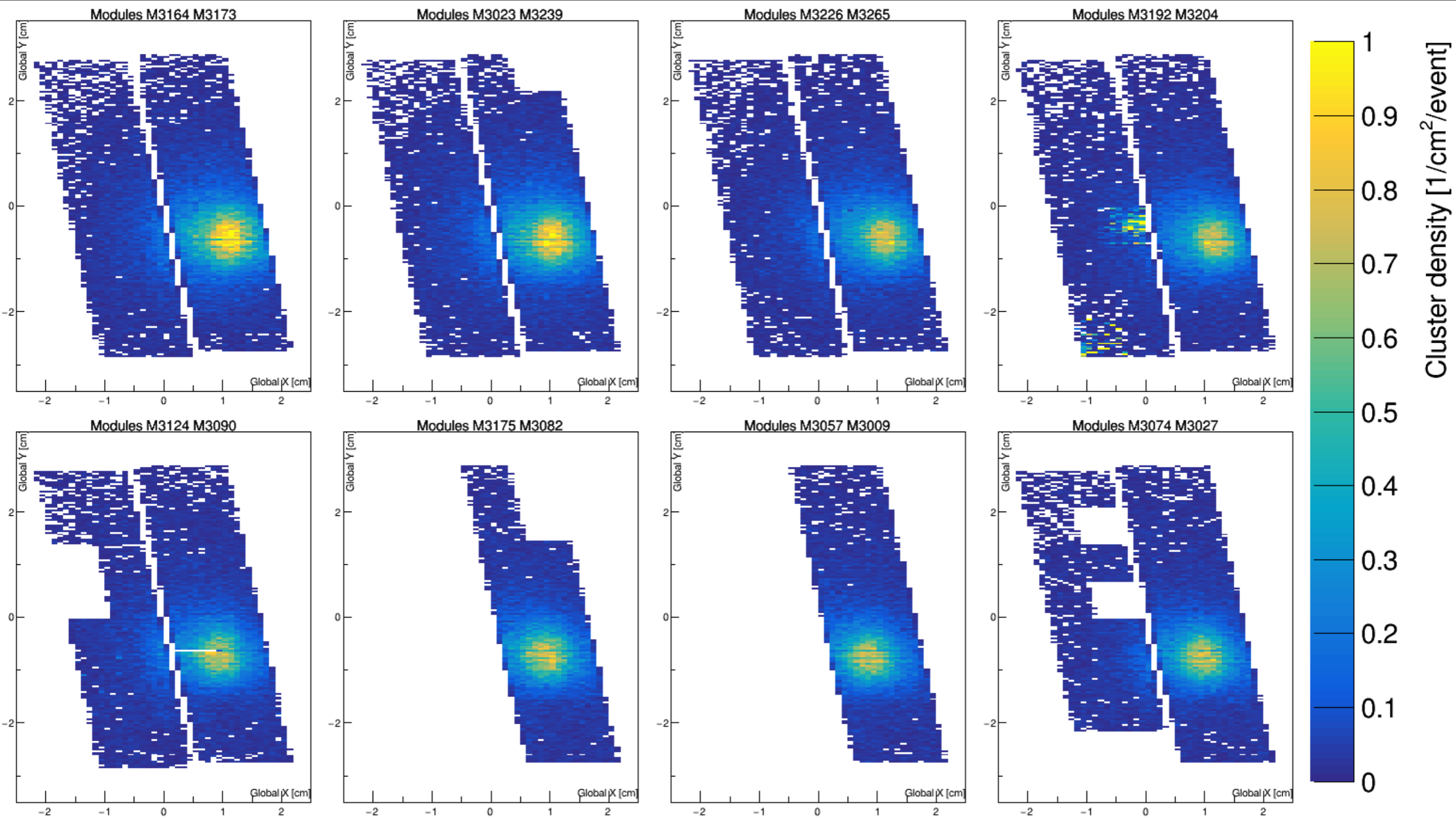


CHROMIE Telescope



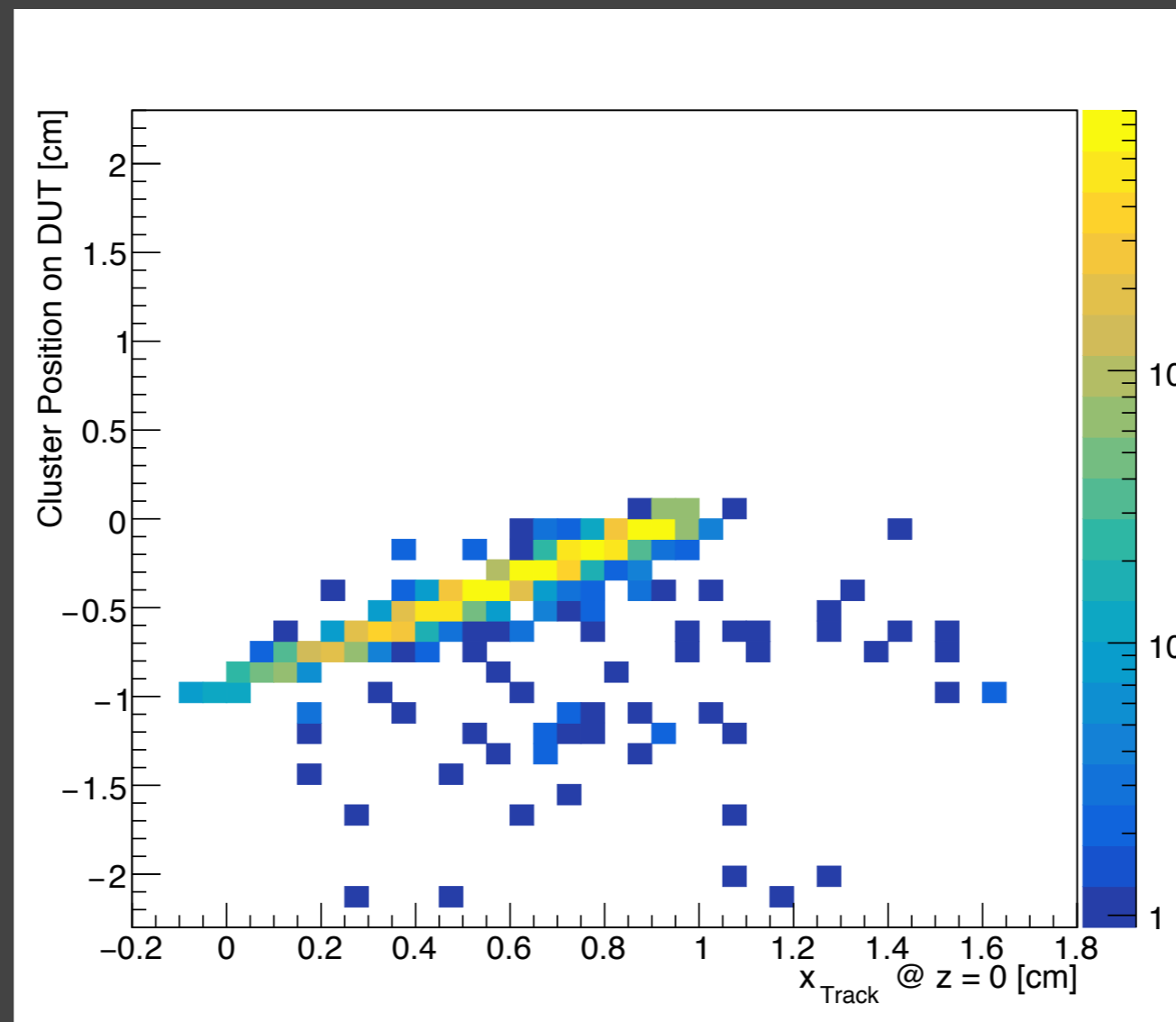
Nikkie Deelen
On behalf of the CHROMIE Team

Telescope commissioned

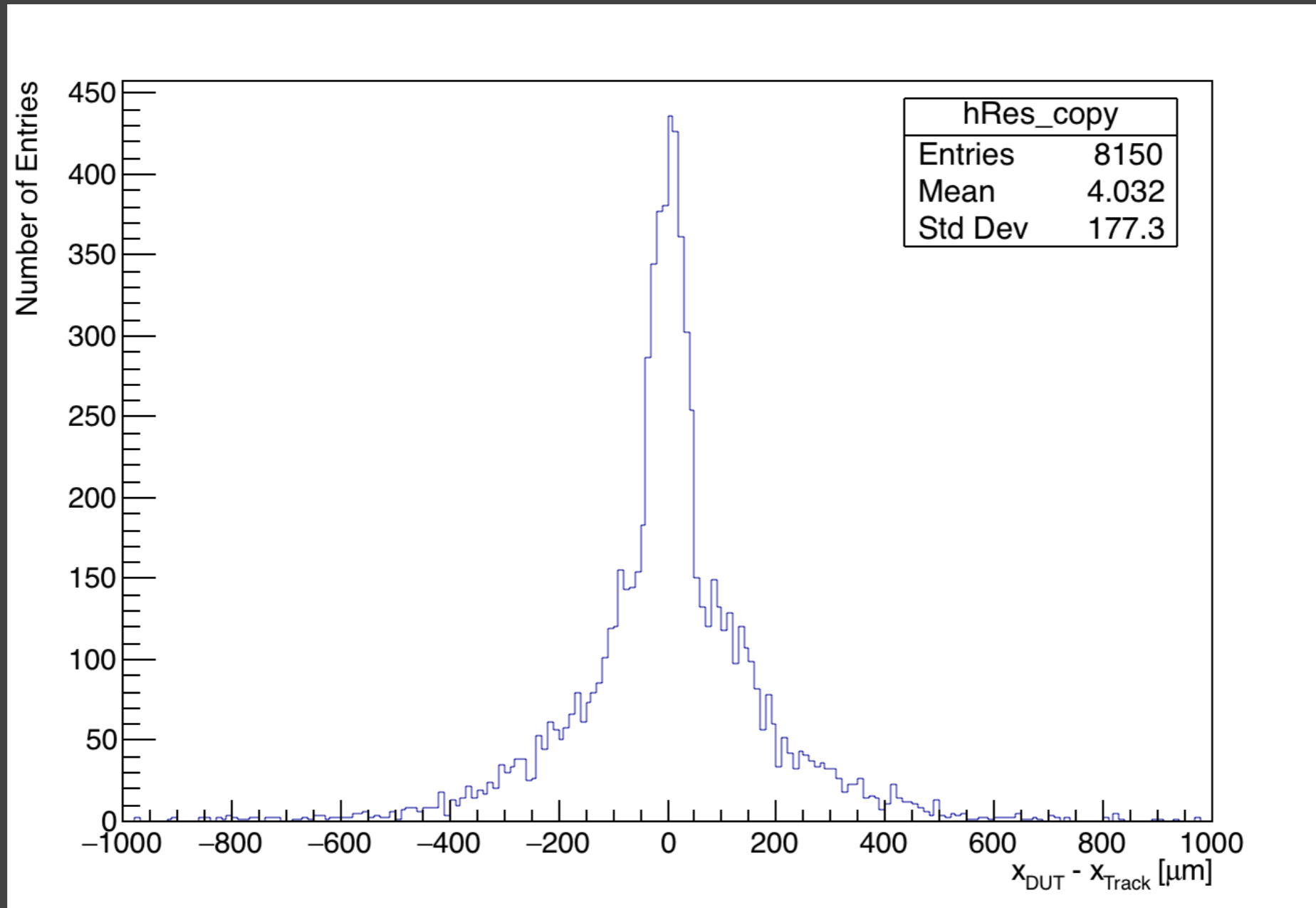


DUT installed

- Phase-II Outer Tracker CBC3 minimodule installed in CHROMIE telescope for the first time
- Triggering setup such that the DUT sends a VETO when it is BUSY
- Telescope and DUT configured first to be ready to receive triggers
- Only when both are ready triggers are send



First results with a DUT



Residuals between (unaligned) telescope track and DUT (aligned with respect to tracks)