



TOTEM test Beam at H8 (12-19.06.2018)

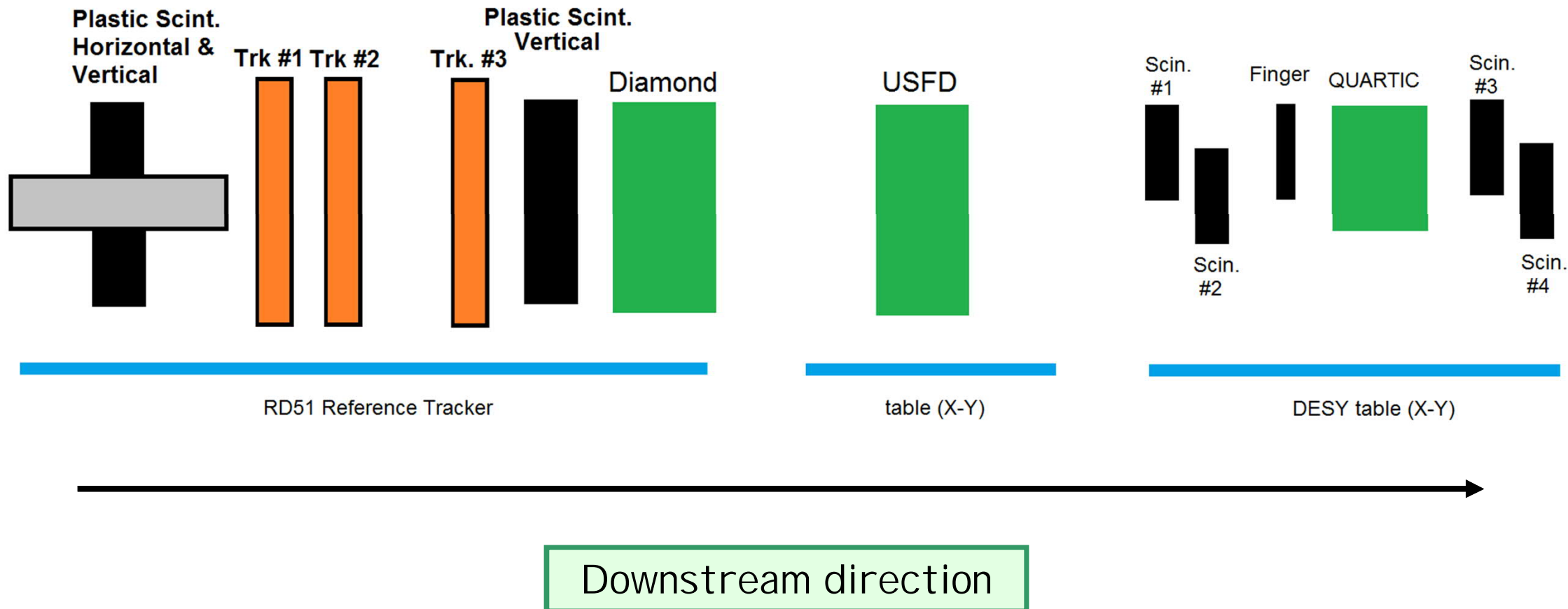
F. García

On behalf of TOTEM experiment

OUTLINE

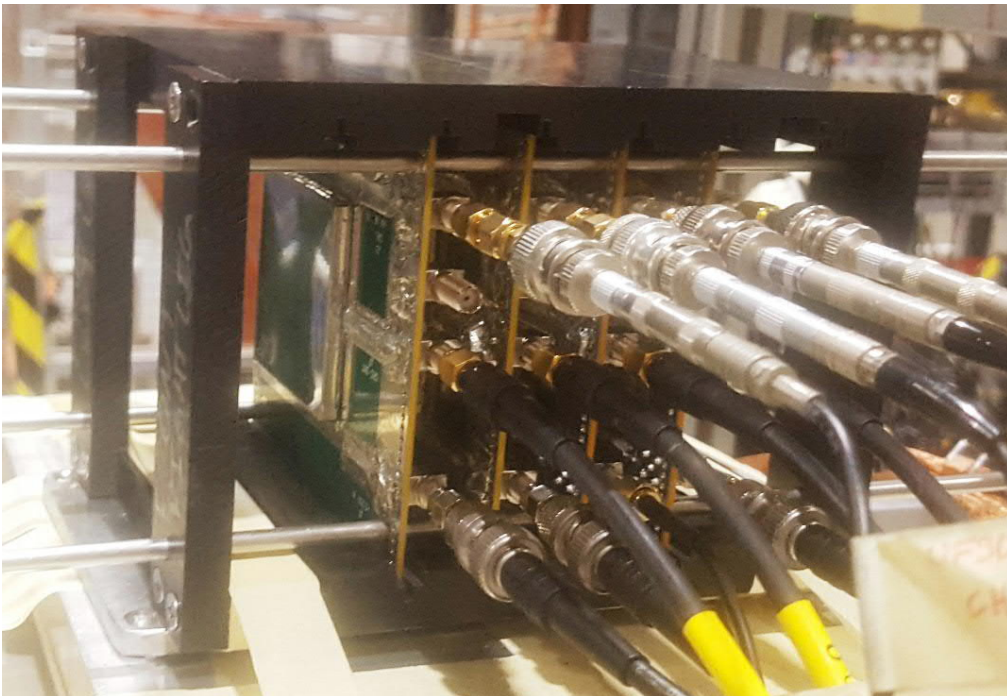
1. Geometry and Installation
2. Device Under Tests
3. Diamond Detectors
4. Summary

GEOMETRY and INSTALLATION



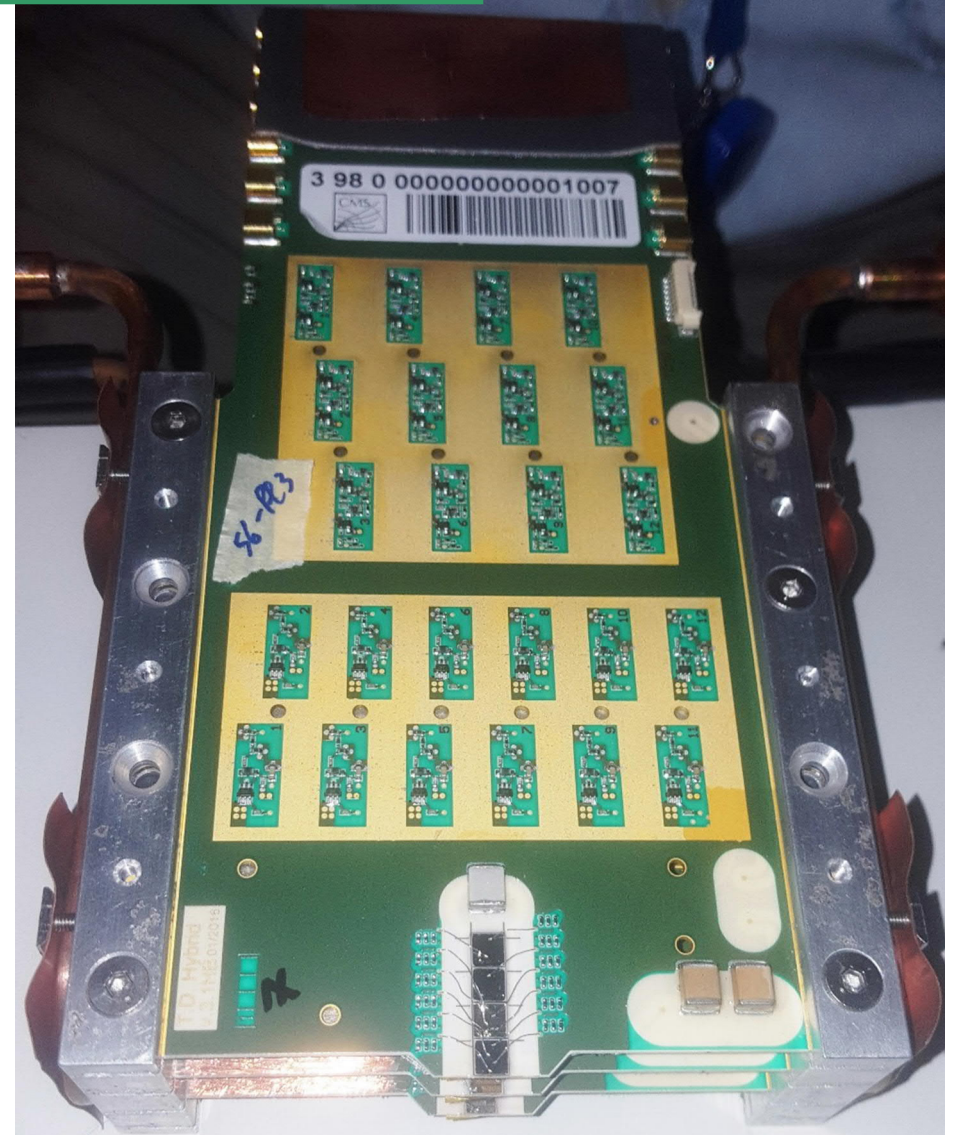
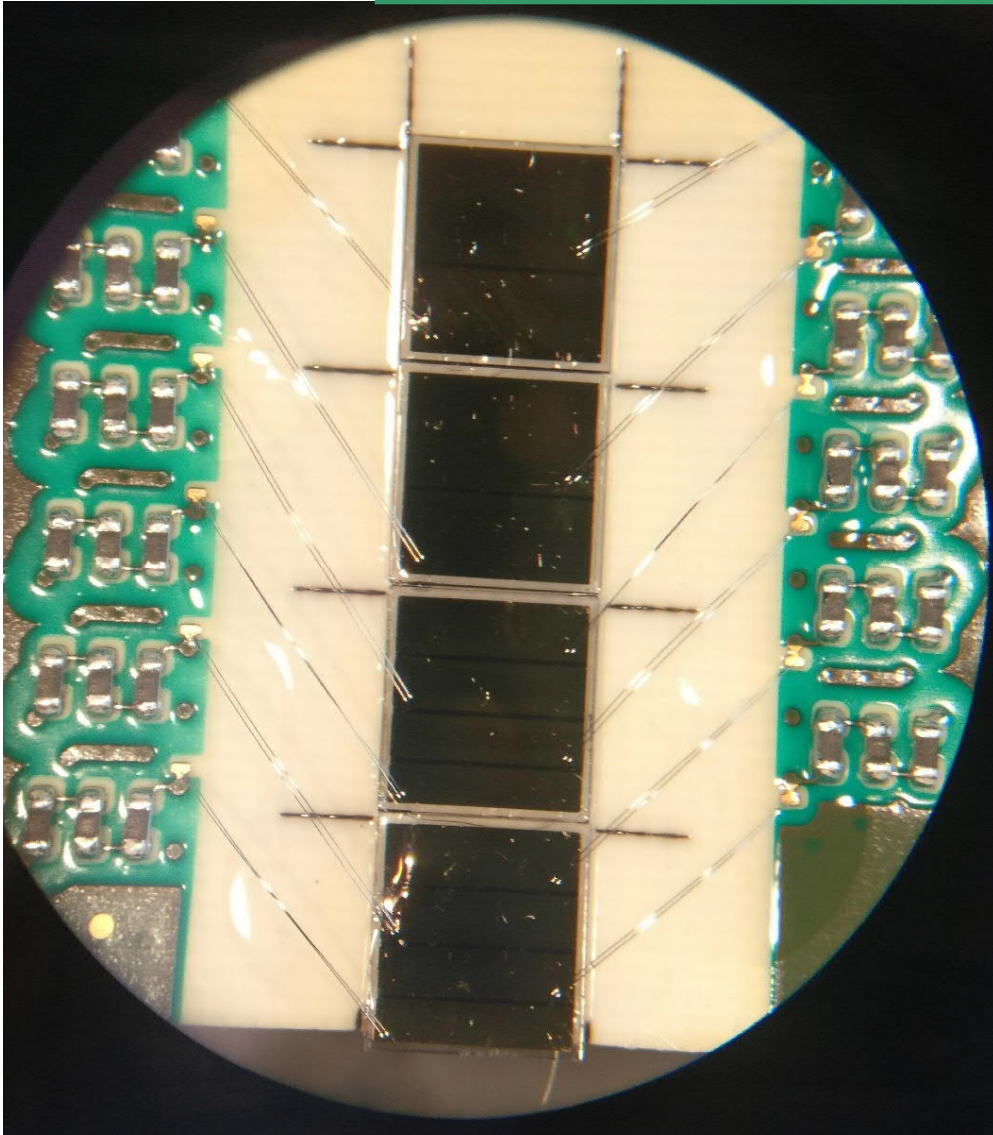
Device Under Tests

1. Diamond detectors from LHC Romanpots
2. UltraFast Silicon Detectors
3. Quartic – Cherenkov detectors



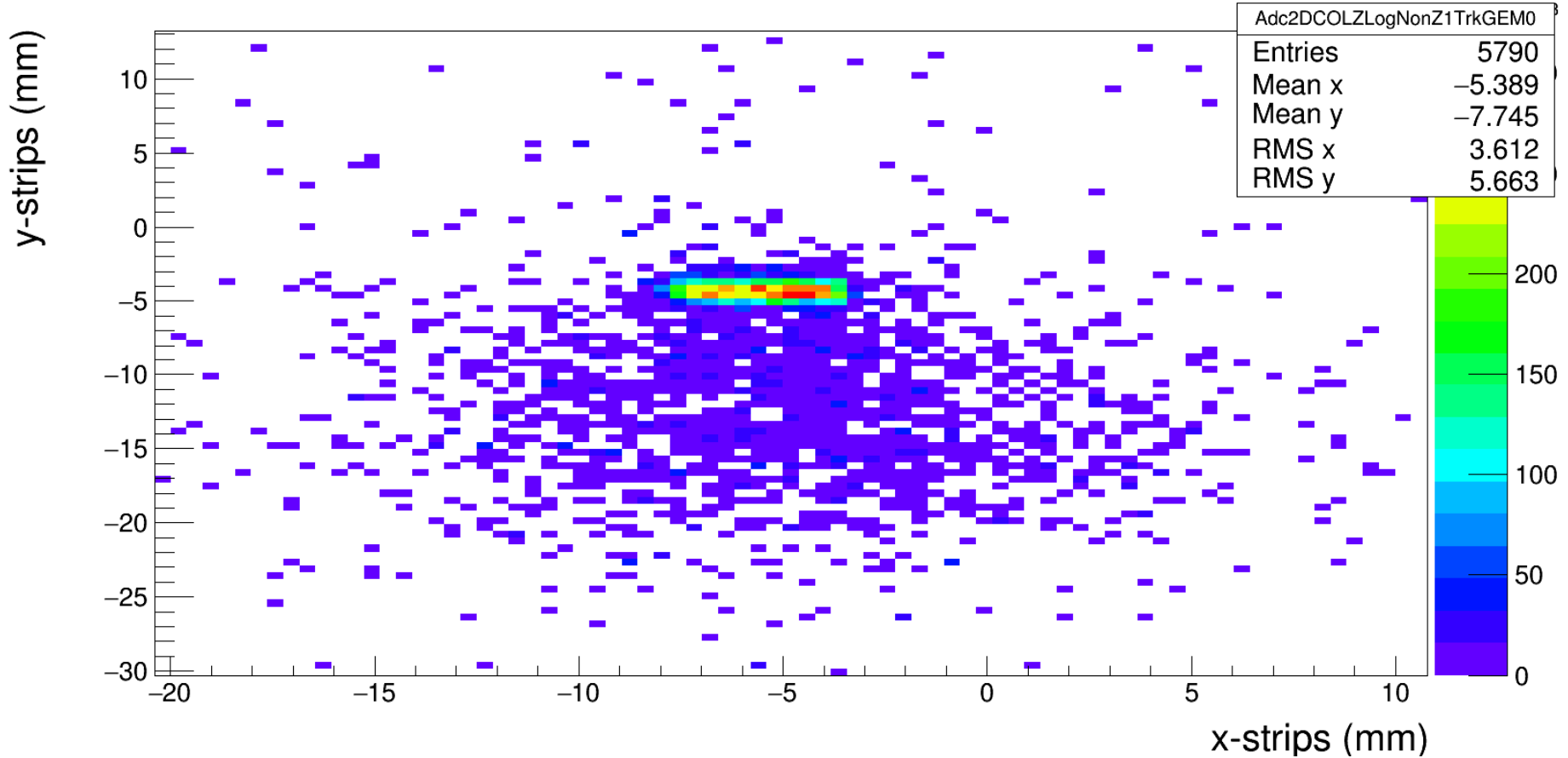
TEST BEAM (cont.)

Diamond detectors from LHC RomanPot: 45 & 56



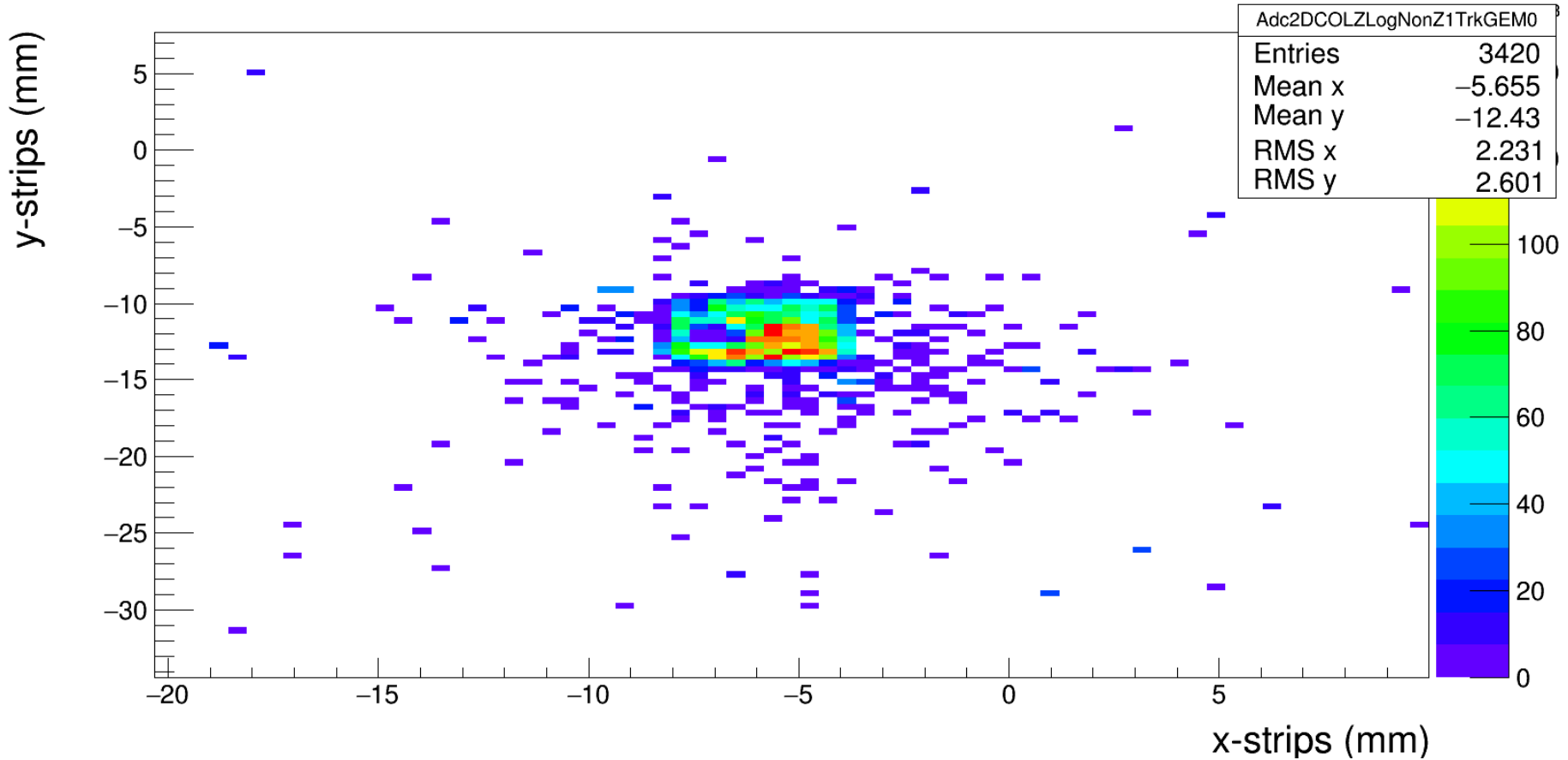
TEST BEAM (cont.)

TrkGEM0: Mean ADC vs.Hit Position Map



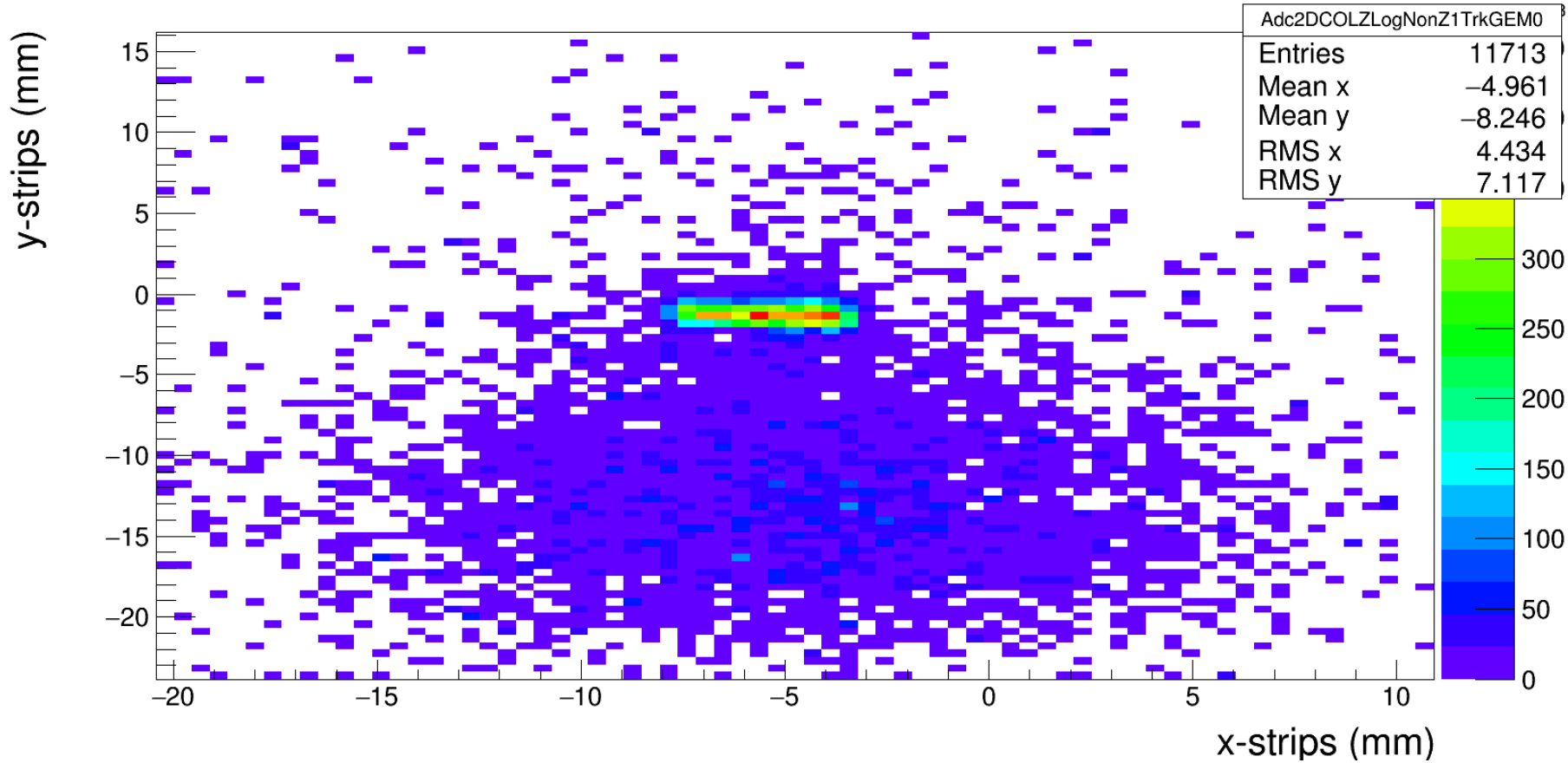
TEST BEAM (cont.)

TrkGEM0: Mean ADC vs.Hit Position Map

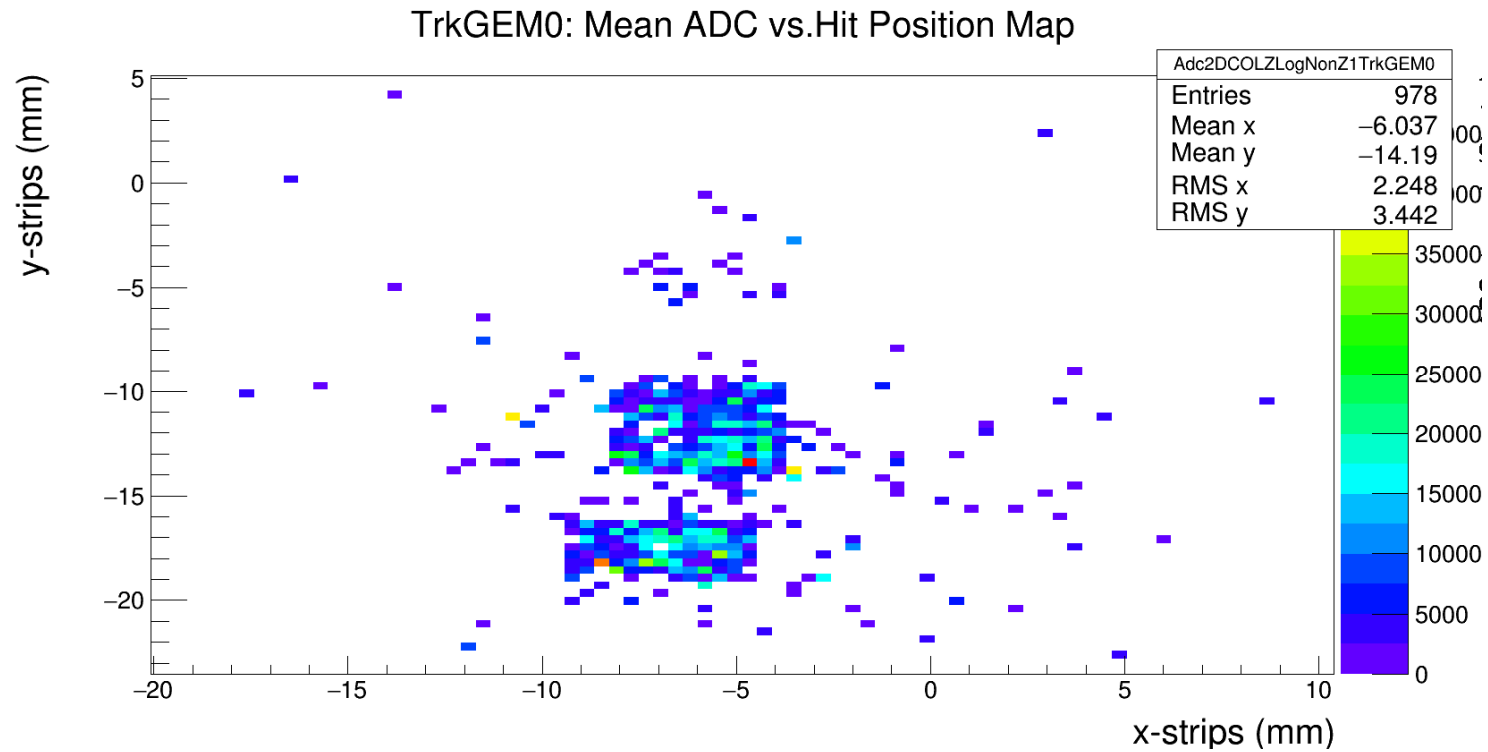
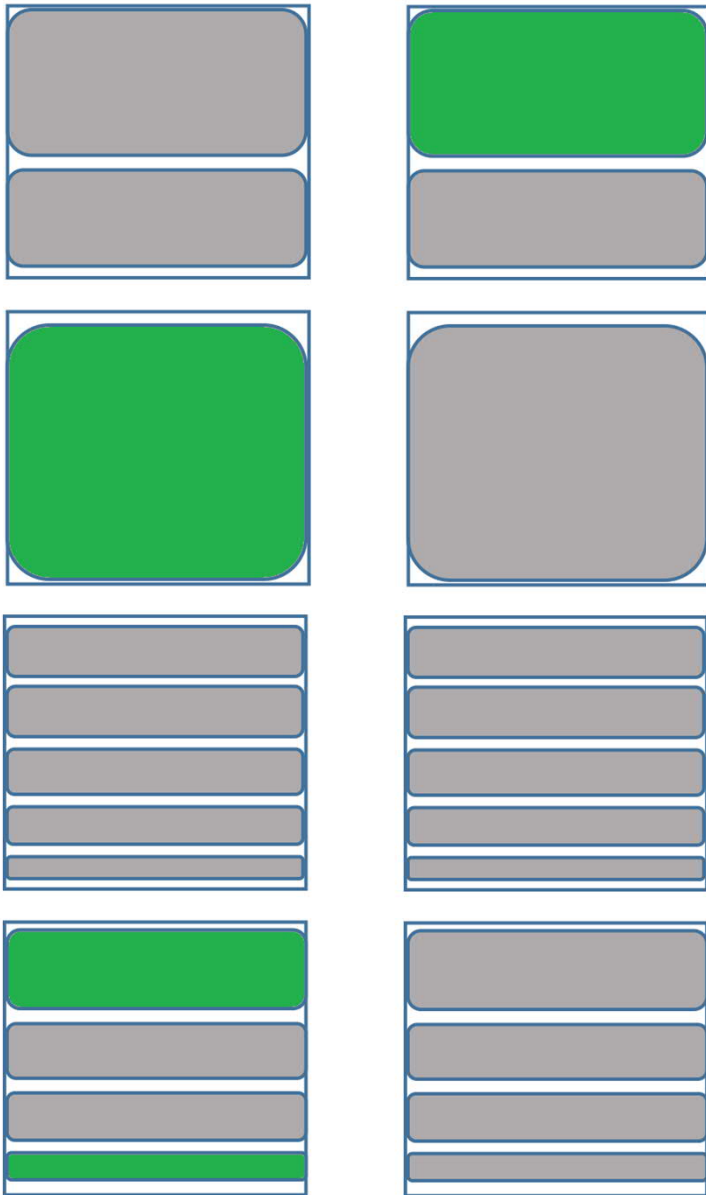


TEST BEAM (cont.)

TrkGEM0: Mean ADC vs.Hit Position Map



TEST BEAM (cont.)



SUMMARY

1. Synchronization of the two DAQs (SRS and SAMPI C) fully working
2. TS2 reduced our test beam
3. Many thanks to all the team at SPS (Transport, gas, inspections, training, beam intensity and etc.)