

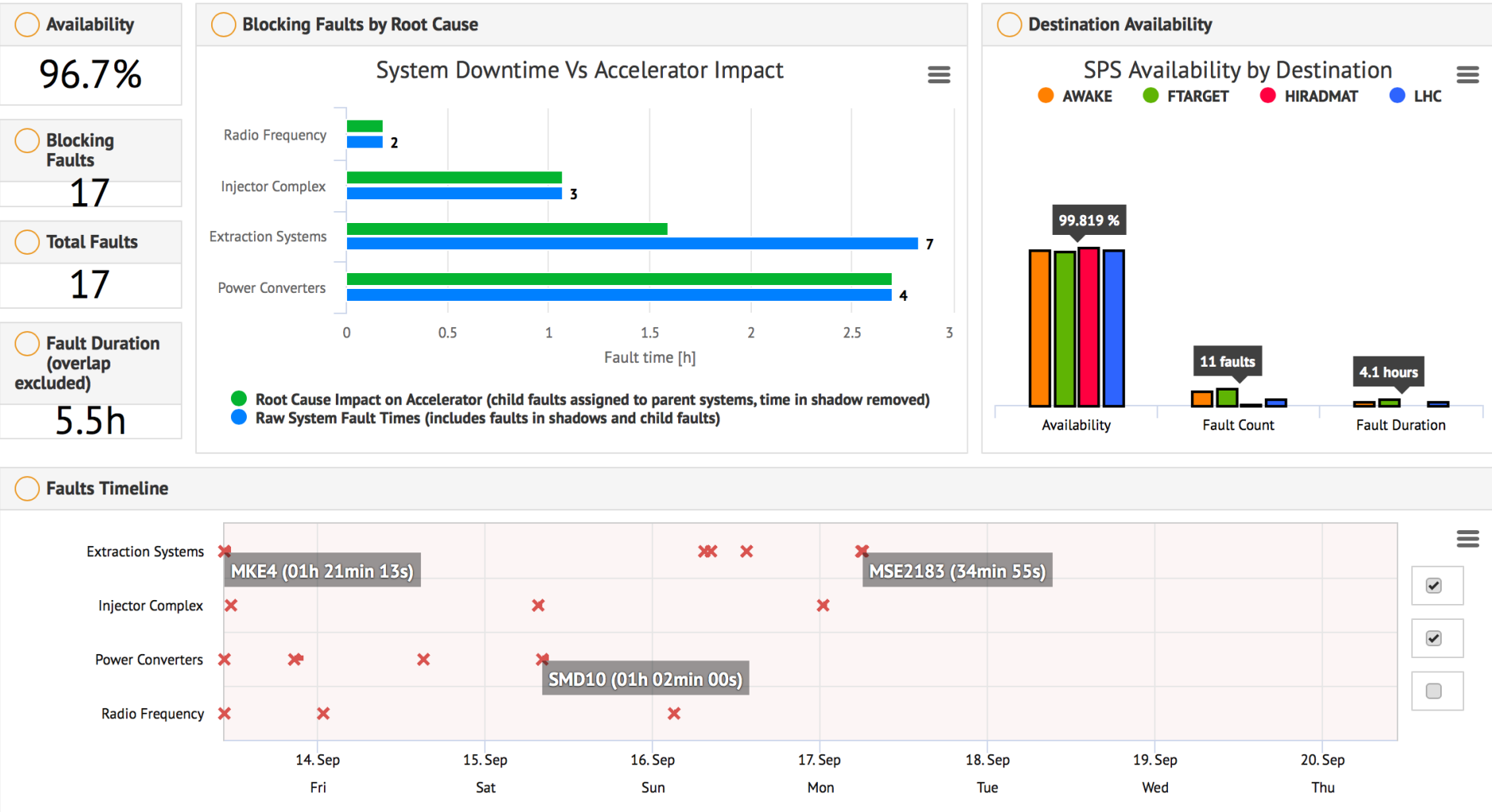
SPS status

H Bartosik

20.09.2018

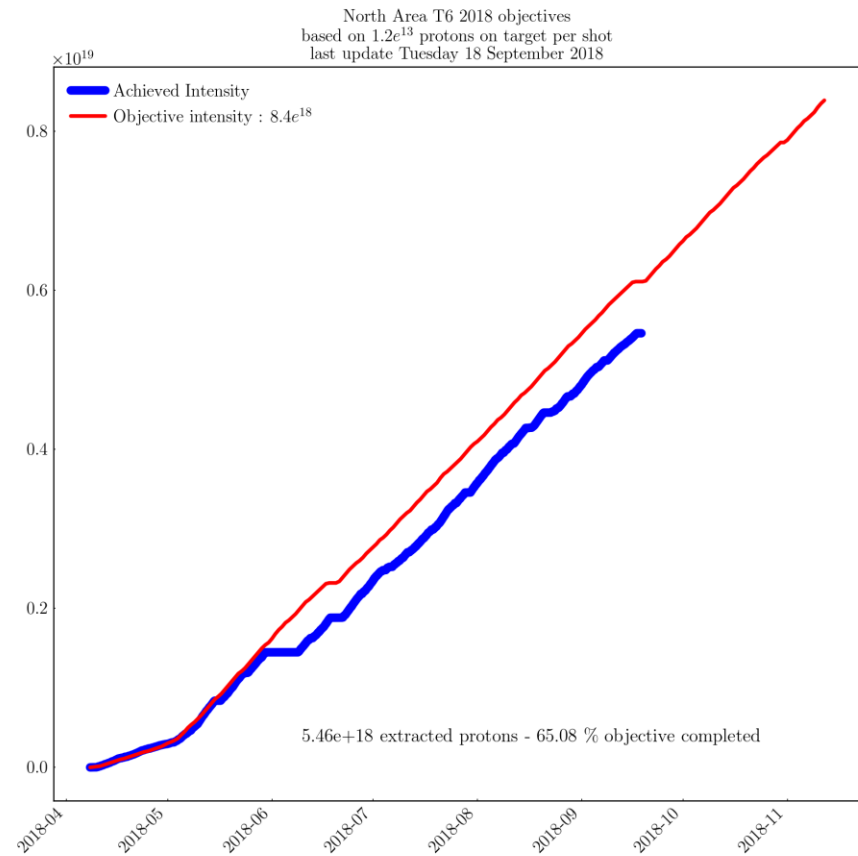
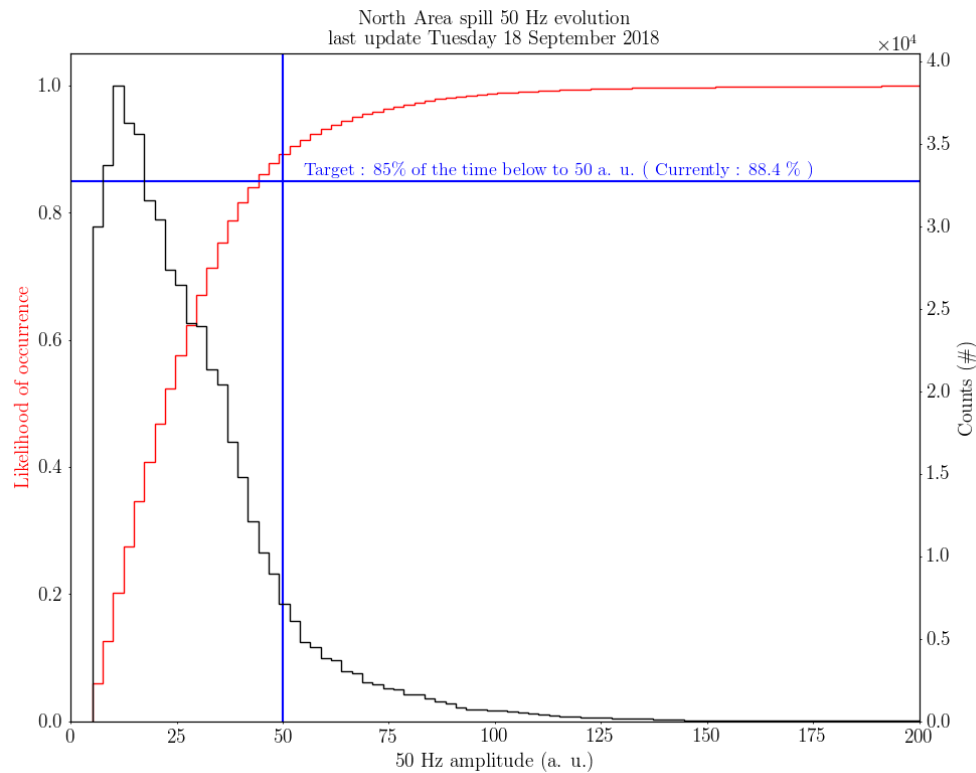
SPS overview

- Good availability, but sometimes low duty cycle because of LHC MDs



SPS overview

- Status of North Area beam
 - Good performance of 50 Hz correction after issue with sextupole circuit solved last week



Incoming

- COLDEX run stops at 14:00
- Restart of SFTPRO with new mode of slow extraction
 - COSE (“Constant Optics Slow Extraction”)
 - Carefully prepared and already successfully tested in MDs
 - Beam position at extraction point more stable
 - Potential for loss reduction in LSS2
 - Further potential of stabilizing beam position on targets during the spill on the long term (not this year because PPM power supplies for transfer line needed)