



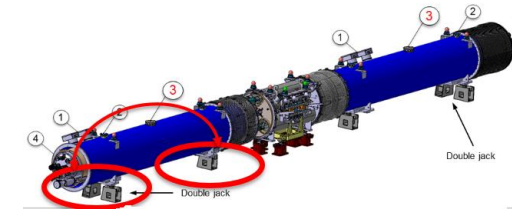
Open issues on 11T alignment

Hélène Mainaud Durand, J-F. Fuchs

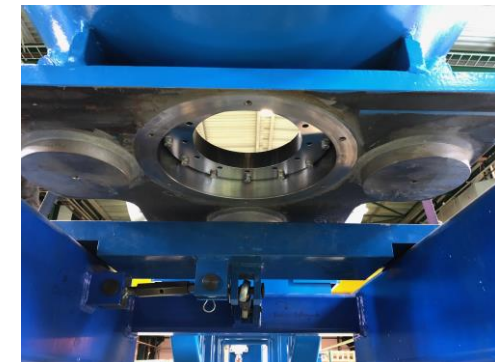


08/05/2018

11T jacks configuration

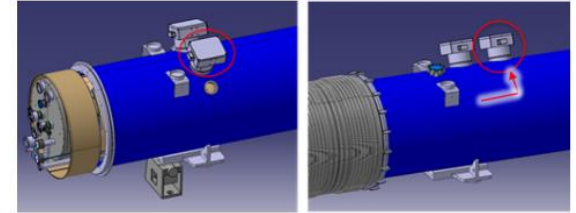


- Request from SU: 1 jack “E” and 2 jacks “S/T” could not be applied.
- Looking at the pictures, we thought that such a configuration was still possible
- Proposal from Delio:
 - MSC will estimate the cost of machining / transport on his side
 - SU will estimate the cost on alignment → mainly risks and a non standard configuration of measurements for our contractor.

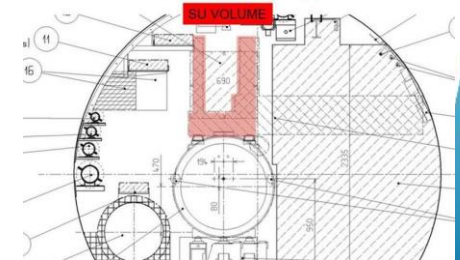


11T other interferences

- Integration of IFS boxes : solved on series, but not on prototypes.
 - Will prototypes be used in the tunnel?
- DN100 flanges: roll angle measurement solved by adding a cylinder
 - Cylinder: integration, fabrication and installation under the responsibility of WP11.
 - Manufacturing to be launched soon (by whom?)
- DN200 flanges: integration still under study. Do not forget our lines of sights

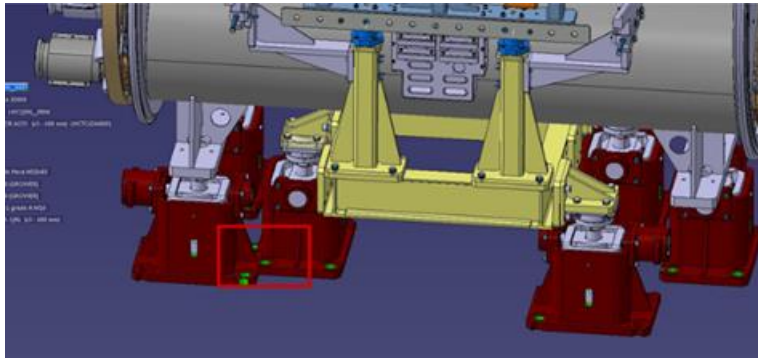


LHC : "Coupe Type"



Specific jacks under by-pass cryostat and TCLD

- Specific jacks under by-pass cryostat and TCLD
 - Jacks modified
 - New version to be tested → test under Inigo Lamas Garcia, in charge of the procurement and validation of jacks.





Thank you very much

