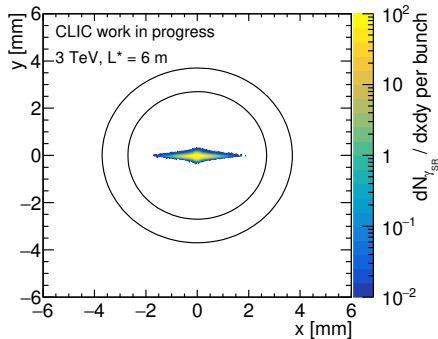
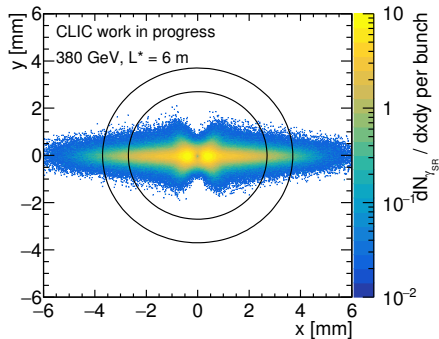


Synchrotron radiation in BeamCal region



- Only photons coming from the last straight part of the Final Focus System have been included and ray-traced to the BeamCal region
- Current detector model with beampipe inner radius $r = 2.7$ mm (valid with $L^* = 3.5$ m, larger with longer L^* ?) cannot safely contain the SR photons at 380 GeV
- The results do not take into account any photon interactions with matter, e.g. reflections from the beampipe