

ADC Weekly Group production

Eirik Gramstad and Monica Dobre

<https://twiki.cern.ch/twiki/bin/view/AtlasProtected/DerivationProductionTeam>

March 27, 2018

Production news

1. AthDerivation-21.2.20.0/.1 built over the past week

- ▶ latest cache mainly for TRUTHx production
- ▶ with 21.2.20.0: already submitted full data15/16/17 for three formats + 400 MC AODs (urgent)
- ▶ quite some data derivation production, combined with only 10% share, over the last week has caused MC production to progress rather slow (managed by priority)
- ▶ no large productions on data foreseen in the next weeks

2. Deletion of derivations

- ▶ sent list of obsolete derivations to deletion 2 weeks ago ([PRODSYS-758](#))
- ▶ as far as I can tell all tasks have sent the deletion command (≥ 3 days ago), but most samples still remain in AMI/Rucio
- ▶ list of all samples in toBeDeleted state:
https://prodtask-dev.cern.ch/prodtask/production_dataset_table/

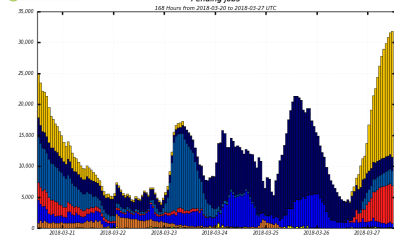
3. optimizing the input size per job for MC derivations

- ▶ using of scouts to find the optimal input size per job (scratch space/job duration/max inputs) ([ATLASPANDA-433](#))
- ▶ adding `tgtMaxOutputForNG=10;maxWalltime=12;nMaxFilesPerJob=200` to the project mode
- ▶ this seems to work nicely so plan to make this the default setting (relying less on the pre-set NG for tasks)

Derivation jobs in the system

dashboard

Pending jobs

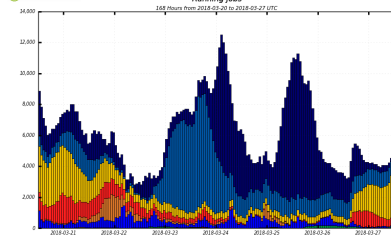


data16_13TeV mc16_13TeV data17_13TeV data17_5TeV mc16_5TeV mc15_14TeV mc12_14TeV mc15_pPb8TeV pending

Maximum: 31,849, Minimum: 4,135, Average: 12,190, Current: 31,849

dashboard

Running jobs

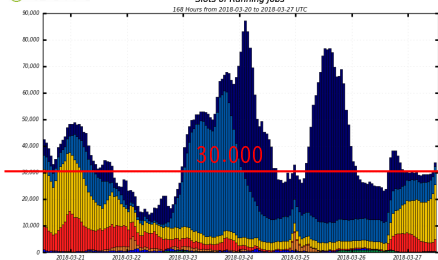


mc16_13TeV data17_13TeV data16_13TeV data15_13TeV mc15_13TeV mc16_5TeV data17_5TeV mc15_14TeV mc16_14TeV mc15_pPb8TeV unknown

Maximum: 12,508, Minimum: 2,829, Average: 6,355, Current: 5,311

dashboard

Slots of Running Jobs



mc16_13TeV data17_13TeV data16_13TeV data15_13TeV mc15_13TeV mc16_5TeV data17_5TeV mc15_14TeV mc16_14TeV mc15_pPb8TeV unknown

Maximum: 87,130, Minimum: 14,160, Average: 40,019, Current: 33,864

monitoring