



Learning & Development @ CERN



RESEARCH
EDUCATION

Development
Learning
Training

TECHNOLOGY
COLLABORATION

Learning & Development @ CERN

WHY



Sponsored at the **highest level of CERN**, learning is positioned as a **strategic activity** for achieving the mission of the Organization

Learning & Development goals

WHY

HIGHLY
QUALIFIED AND
MOTIVATED
WORKFORCE

TECHNICAL &
BEHAVIORAL
COMPETENCIES

CERN
VALUES

COHERENT
APPROACH

EQUITABLE
ACCESS

Which category of personnel can benefit from learning and development ?

WHO

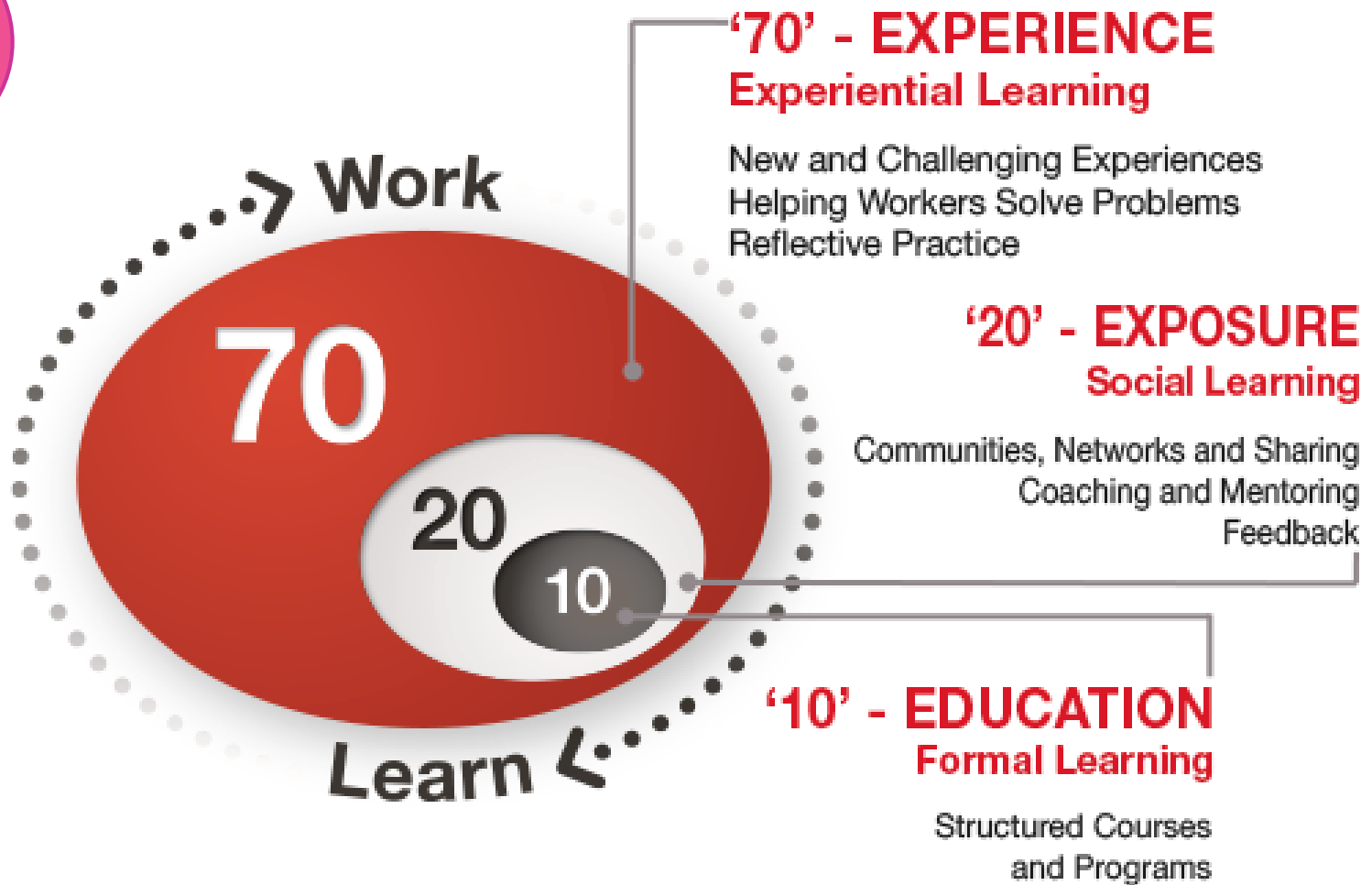


**All categories
everybody can register**

HOW

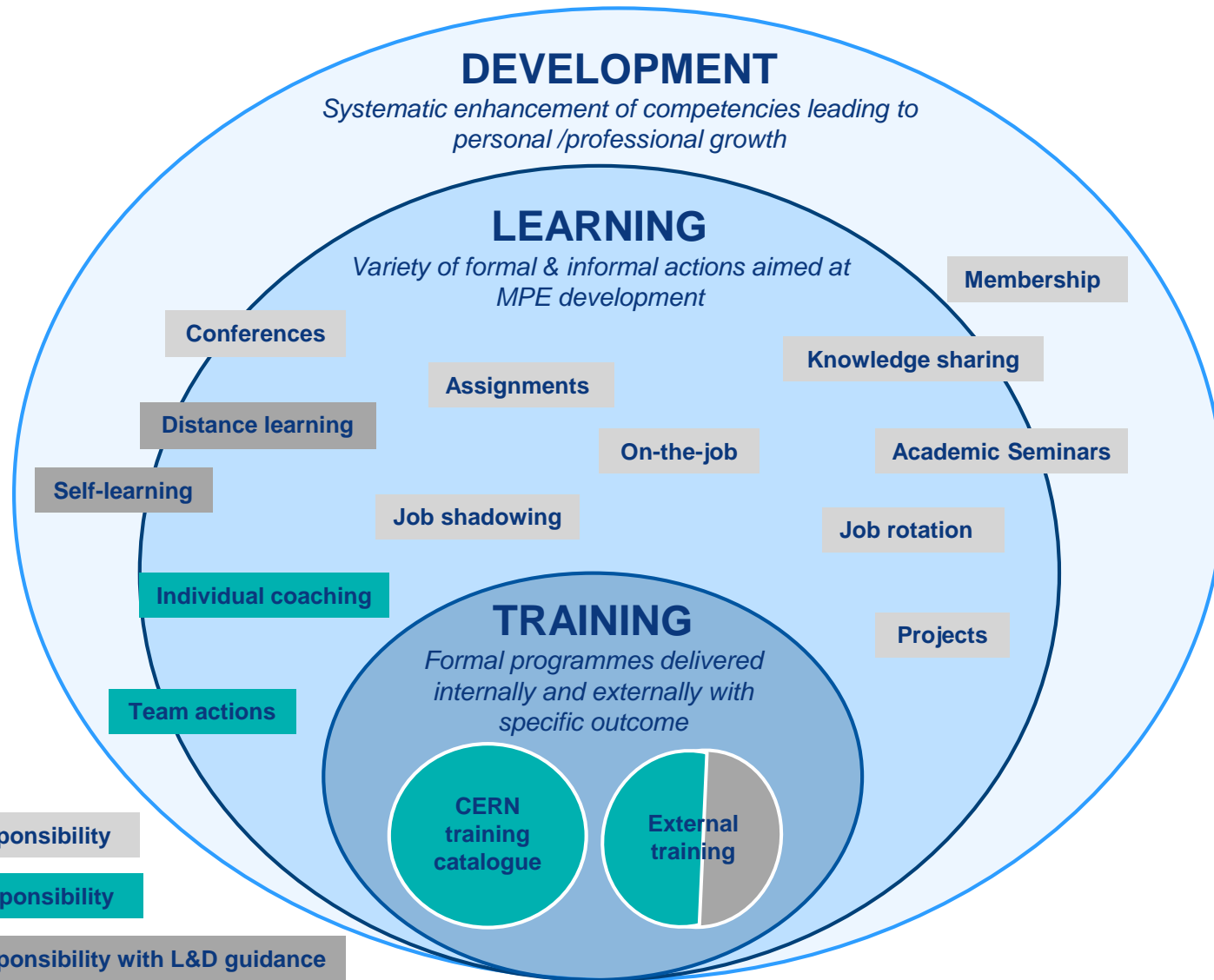


HOW



© 70:20:10 Forum

Diversity of learning opportunities **HOW**



Learning priorities

HOW

What does it mean ?

Mandatory to perform a function or a role in the Organization

AND / OR

Necessary to ensure a successful integration in the Organization and/or the local area

Learning priorities

What does it include?

- **Onboarding** programme
- **safety**-training and awareness programmes
- **technical** training improvement programmes
- **CERN office software** (EDH, HRT, etc)
- **basic language** training (English & French)
- **core leadership and supervisory** skills programmes
- **core communication** programmes
- **sensitization to diversity** issues in the workplace

How to register ?

FIRST OPTION

HOW

CERN Accelerating science

[Sign in](#) [Directory](#)



[About CERN](#)

[Students & Educators](#)

[Scientists](#)

[CERN community](#)

[English](#)

[Français](#)



CERN Updates

[Combatting cancer in challenging environments](#)

9 November

[Marie Skłodowska-Curie: more alive today than ever](#)

7 November

[How much does a kilogram weigh?](#)

2 November

[Past updates >](#)

Search this site

Search

CLOUD BANANA CLOUD, 13/11/2011 00:00

[view image](#)

A banana plot from the CLOUD experiment showing several particles growing from tracks



How to register ?

SECOND OPTION

HOW

CERN Home > FAP Department

Welcome Margot Lea Josepha MONTASSINE



EDH

EDH



Home | Tasks | Search | News | Settings | Whats New | Statistics | About | Help | Logout

Tasks



Other Tasks



Absence Request



Access Request



Catalogue - CERN
Stores



GSM Subscription
Request /
Modification



Inter Departmental
Transfer (TID)



Material Request
(Stores)



Official Travel
Request



Purchase Requisition
(DAI)



Shipping Request
(Expedition)



Training: Classroom
(CTA)



Training: Online (SIR)



Transport Request
(CERN Site)



Searches



Documents Created
By Me



Documents To Sign
By Me



Search Documents



Stored Searches

Internal learning expertise

HOW





Your contacts – HR Learning Experts

Learning and Development Team

HSE
Safety
Training

Erwin
MOSSELMANS



Elizabeth
EASTWOOD-BARZDO



Margot
MONTASSINE



Marie
LAHCHIMI



Nathalie
DUMEAUX



Maria
FIASCARIS



Hanan
BRIOUAL



Pascale
GOY



Your DTO*

WHO

International Relations

RCS KNOORS Nathalie

IR FROMM Christina

Director General Units

DG MEICHTRY Lynda

Health & Safety and Environmental unit

HSE WIJNANDS Thijs

Pension Fund

PF MARME Ghislaine

Accelerators and Technology

BE MONTESINOS Eric

EN NICQUEVERT Bertrand

TE HOBGEN Georgina

ATS HOBGEN Georgina

Finance and Human Resources

FAP KLEM Doreen

HR CHOY Aurelie

IPT LEONARD Anne-Laure

SMB ANGELINI Veronique

Research & Computing

IT KWIATEK Michal

TH KNOORS Nathalie

EP KNOORS Nathalie

RCS KNOORS Nathalie

*DTO = Departmental Training Officer

**Personal
+ Professional growth
= EXCELLENCE**

WHY

WHAT

HOW

WHO

YOU

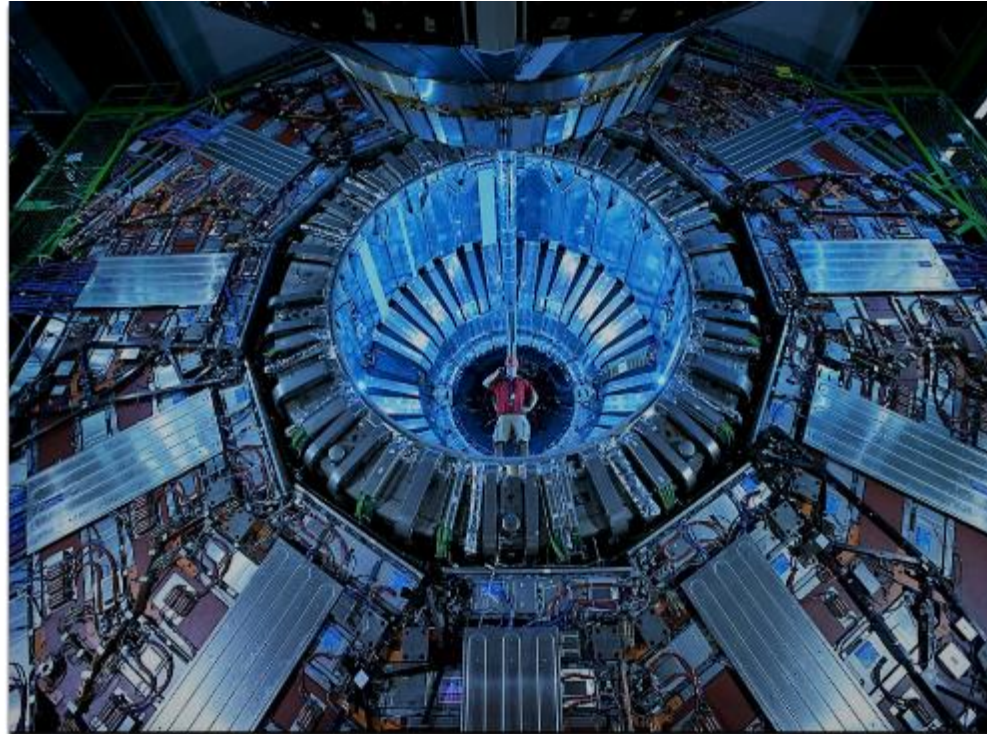
**me
+ supervisor
= PARTNERSHIP**

WHY

WHAT

HOW

Ready to 'accelerate' your learning journey at CERN ?



Thank you for your attention