

ttX studies for the HL/HE-LHC

Eleni Vryonidou
CERN TH

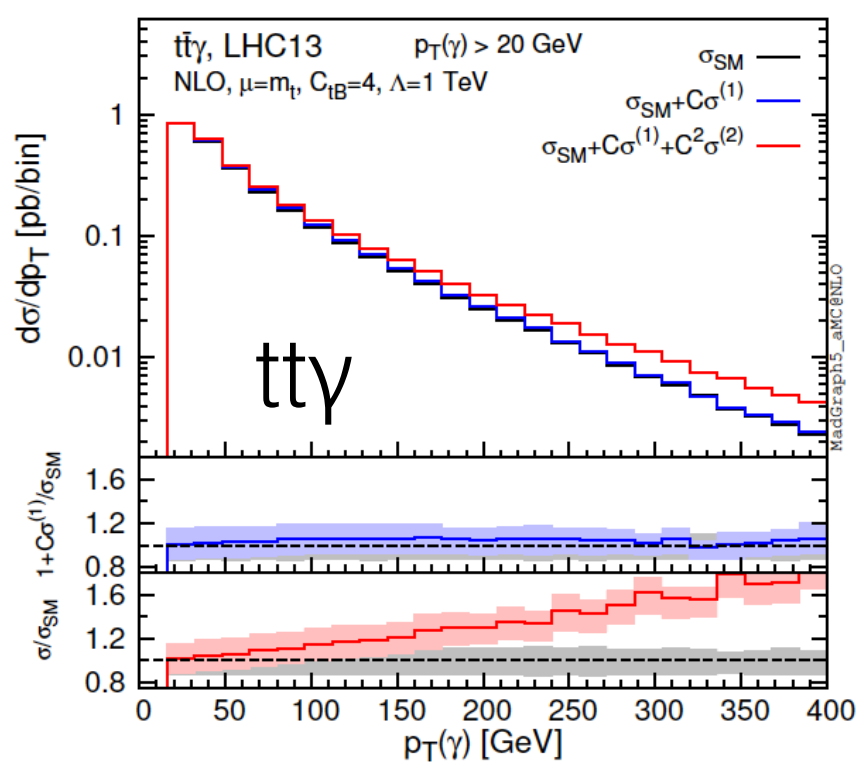


ttX group:
Y. Li, A. Onofre, M. Llacer (ATLAS)
R. Schoefbeck (CMS)
E.Vryonidou (Theory)

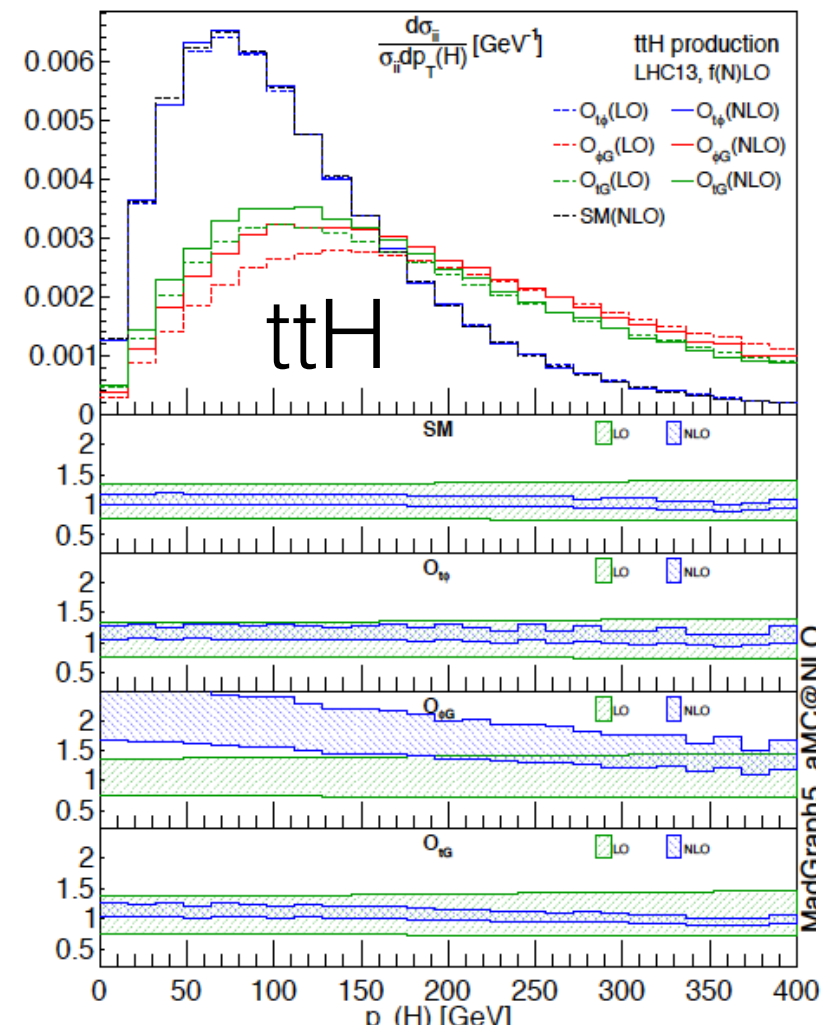
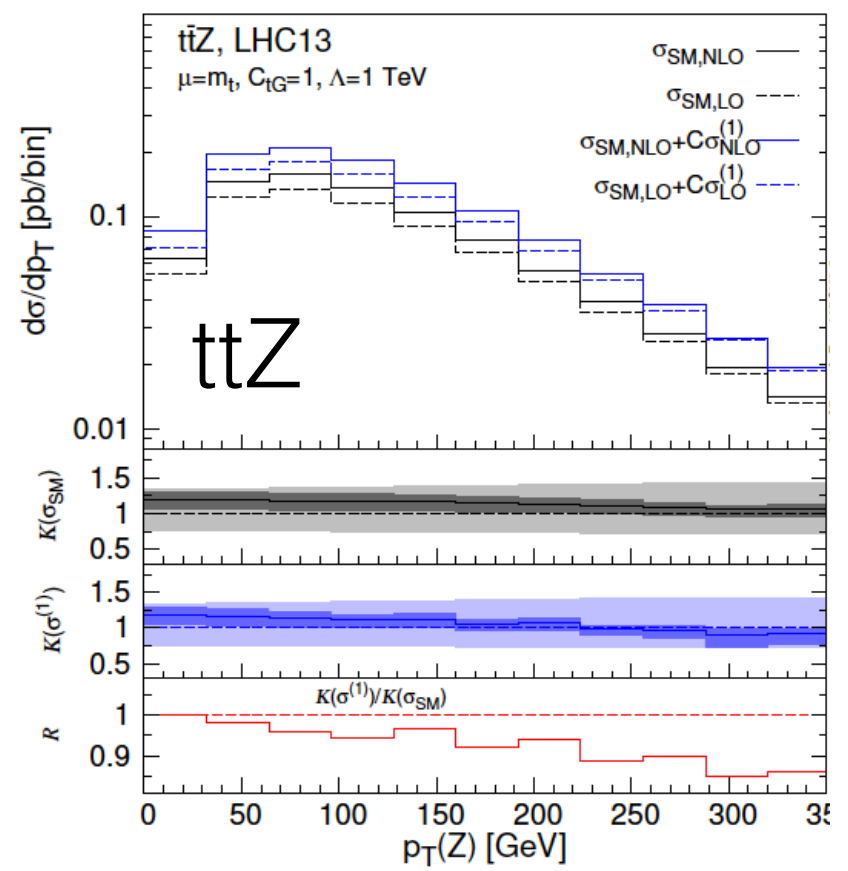
HL/HE-LHC
WG1
2/5/18

From February meeting:

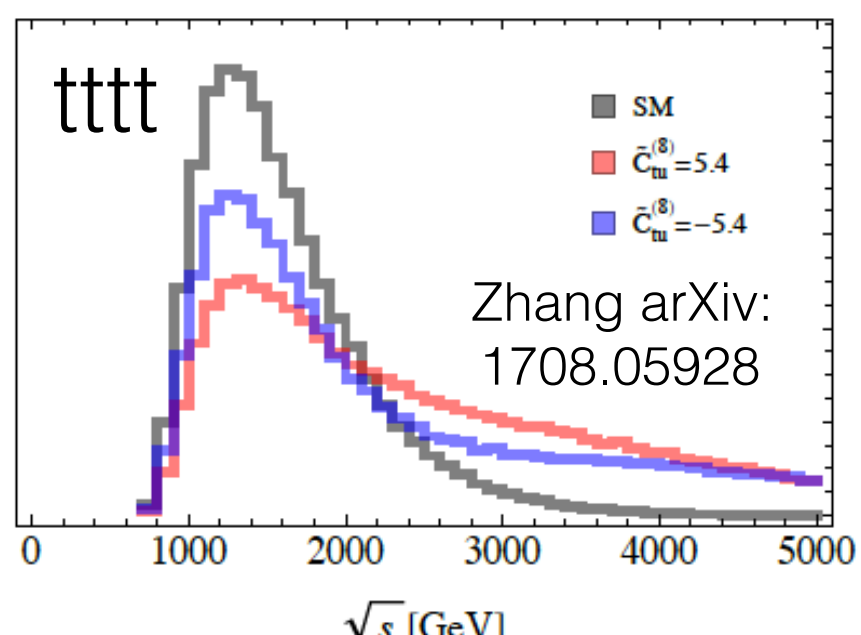
HL/HE-LHC prospects



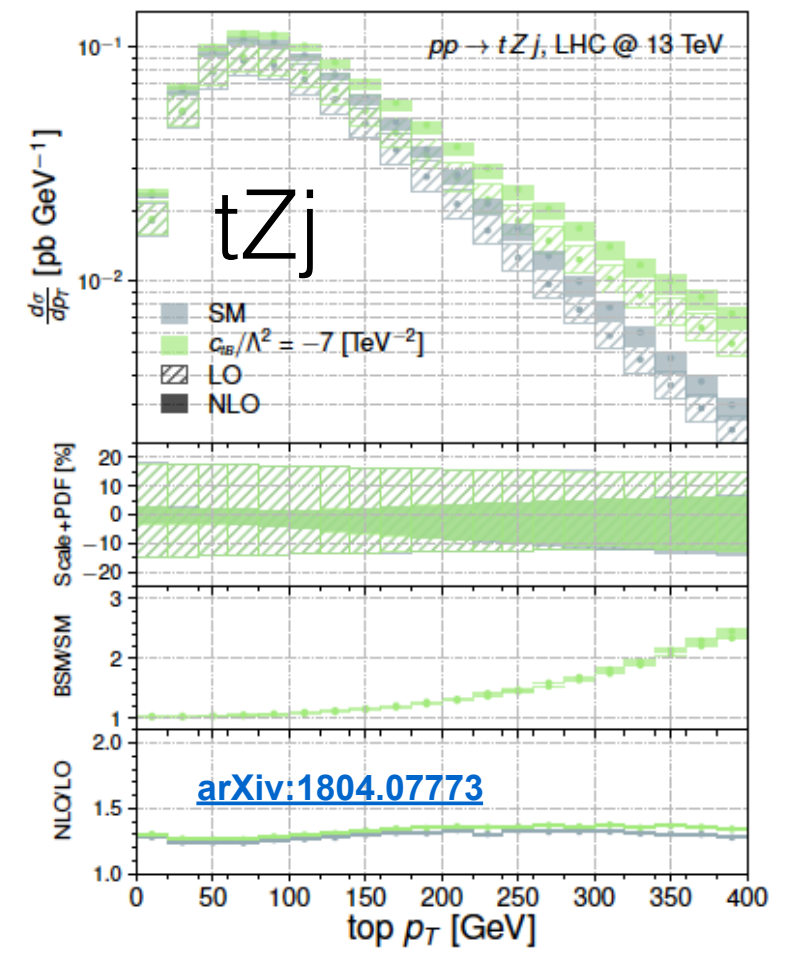
arXiv:1601.08193



arXiv:1607.05330



Zhang arXiv: 1708.05928



Importance of differential measurements in particular for high threshold processes $t\bar{t}V$, $t\bar{t}H$, $t\bar{t}t\bar{t}$, $t\bar{t}Zj$ for HL/HE-LHC

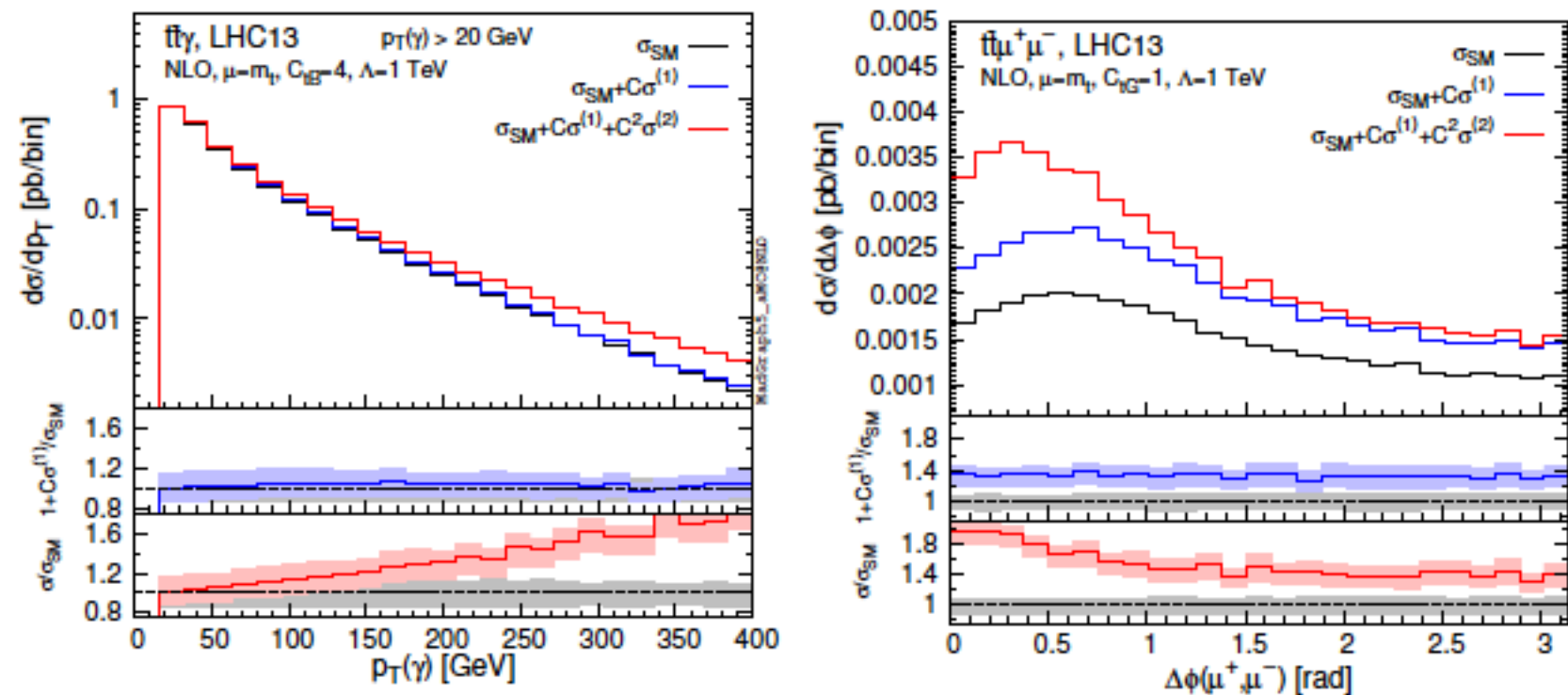
From February meeting:

Plans for HL/HE-LHC report?

- Provide benchmark EFT cross-sections for HE-LHC
- Investigate EFT effects in distributions for rare processes
- Combine LHC13 predictions with HL-LHC projections to extract potential sensitivities-Work closely with experimentalists

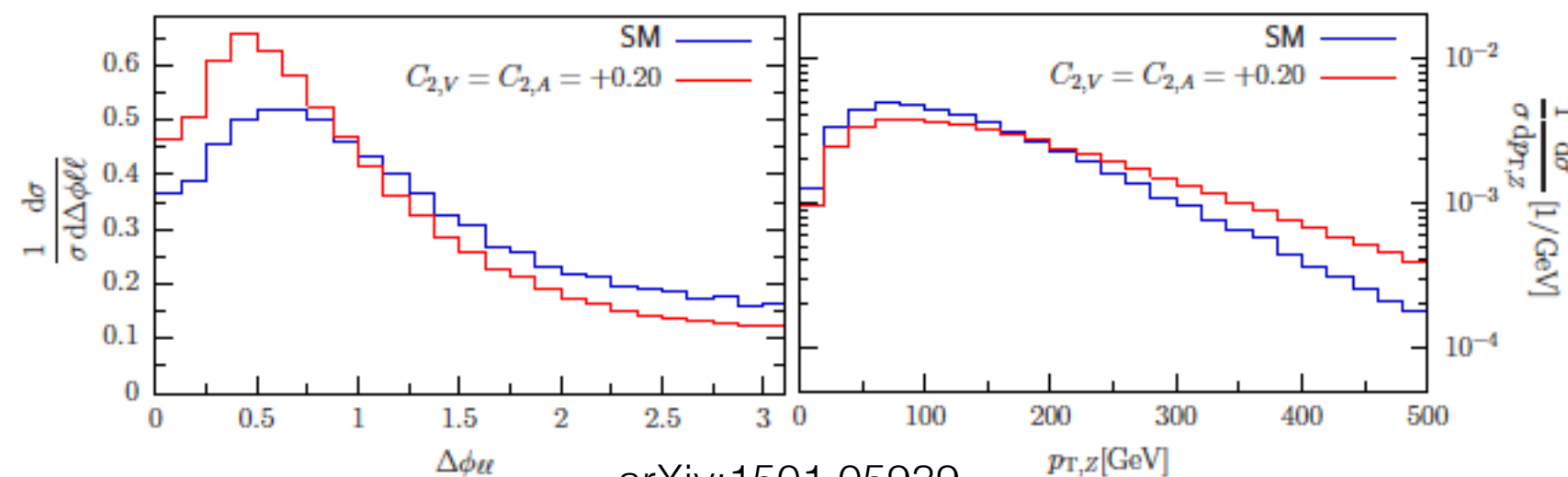
ttV plans for HL-LHC

Focus on ttV: probe of top-Z and top-gamma couplings
Pheno studies:

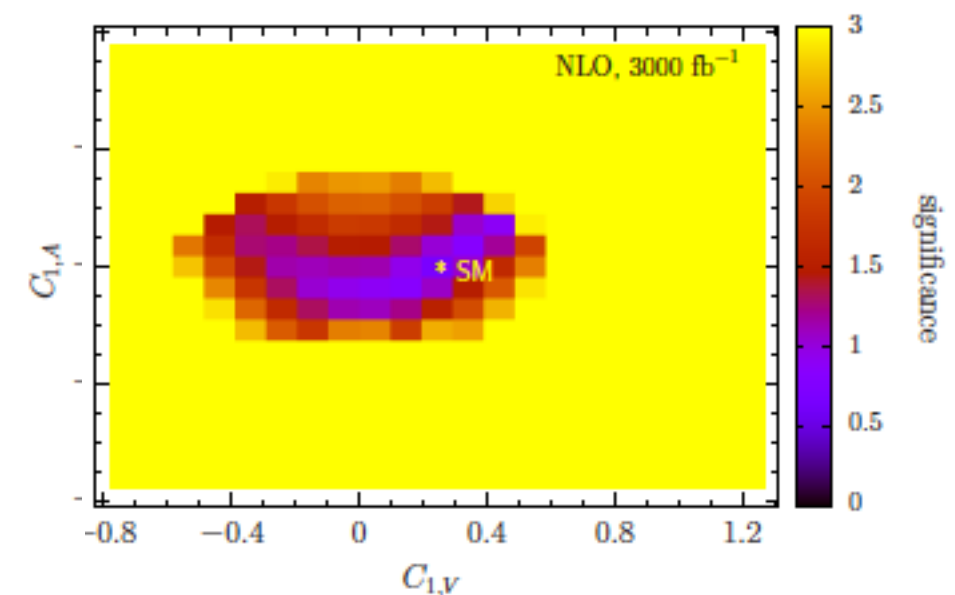


Pheno studies already demonstrating the importance of differential information

arXiv:1601.08193



arXiv:1501.05939



ttV plans for HL-LHC

From the ATLAS and CMS analysis groups

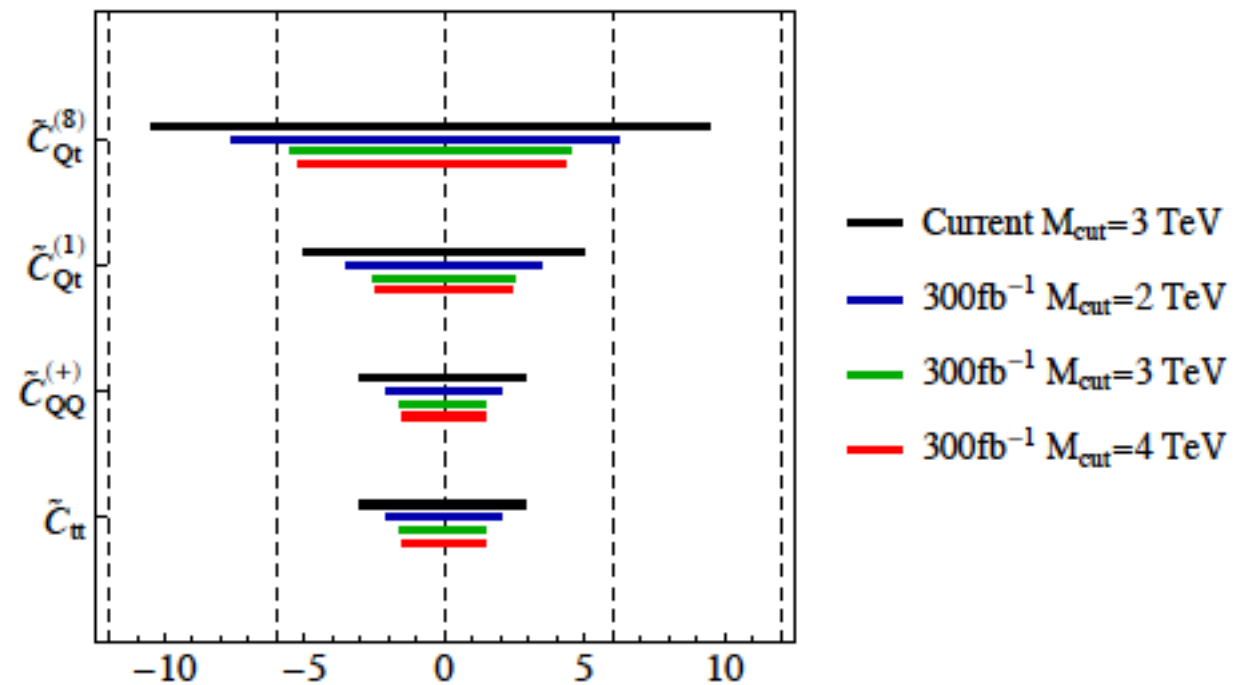
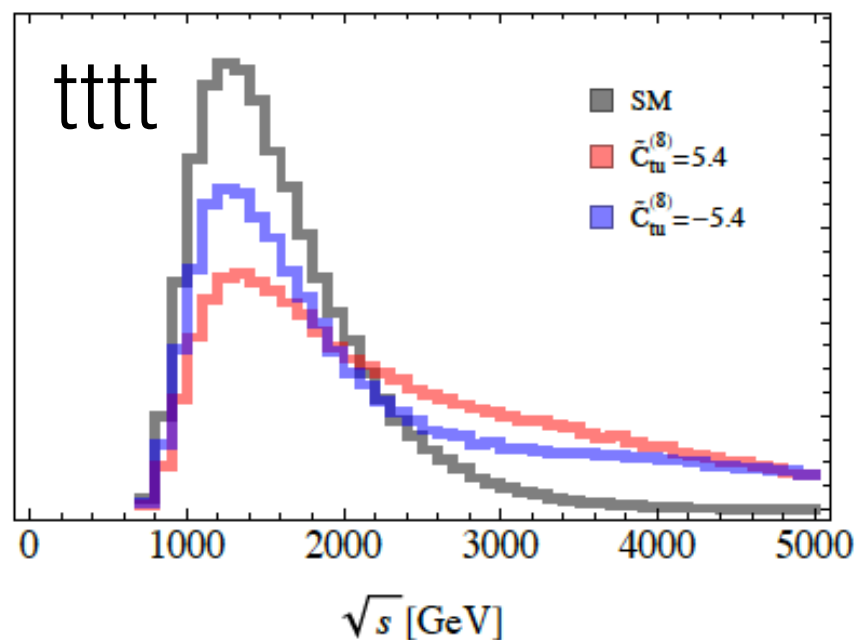
ATLAS and CMS teams agreed to show

- projections of ttZ and ttGamma final states
- show differential distributions, if possible unfolded to particle level
- obtain projections of EFT sensitivity for HL-LHC scenarios
- follow common prescriptions for uncertainties
- using $p_T(\text{Z/Gamma})$ and $\Delta\Phi(\text{ll})$
- split in 3l and 4l channel

**if there are centrally available HE-LHC scenarios,
will attempt to use them for similar estimates**

Other EFT directions:

4tops: EFT interpretation of 4top studies:



Zhang arXiv:1708.05928

See Marco's talk

HE-LHC: lacking pheno studies

interested experimental analysis groups welcome to participate

Thank you for your attention