



LMQXF cold masses interfaces status

H. Prin



Cold mass supports

LHCLMQXF_S0007

Degassing grooves

Agreed for cryostating

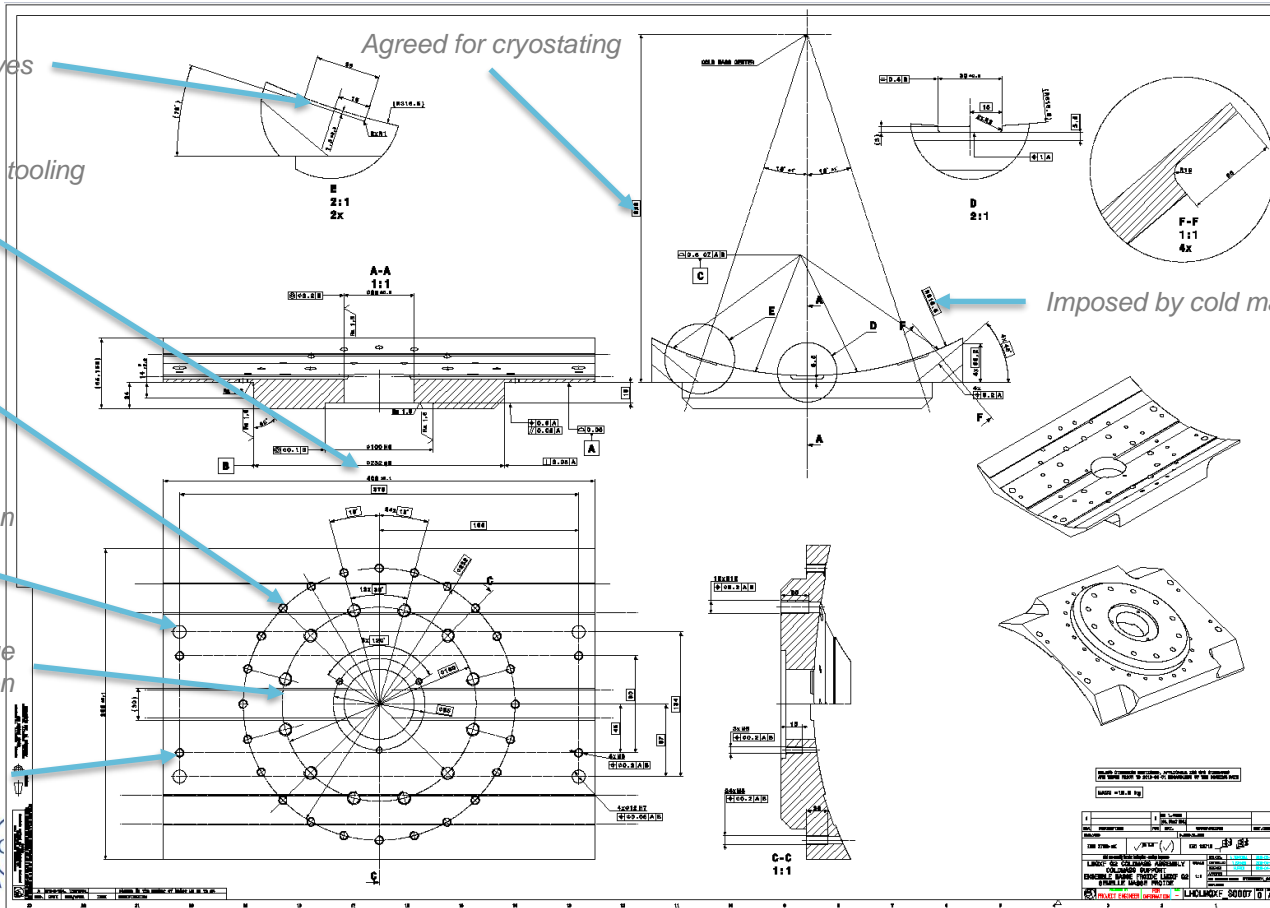
Imposed by existing tooling

Support post fixation

Used for fiducialisation

Requested by Tom Page
Transport Restrain fixation

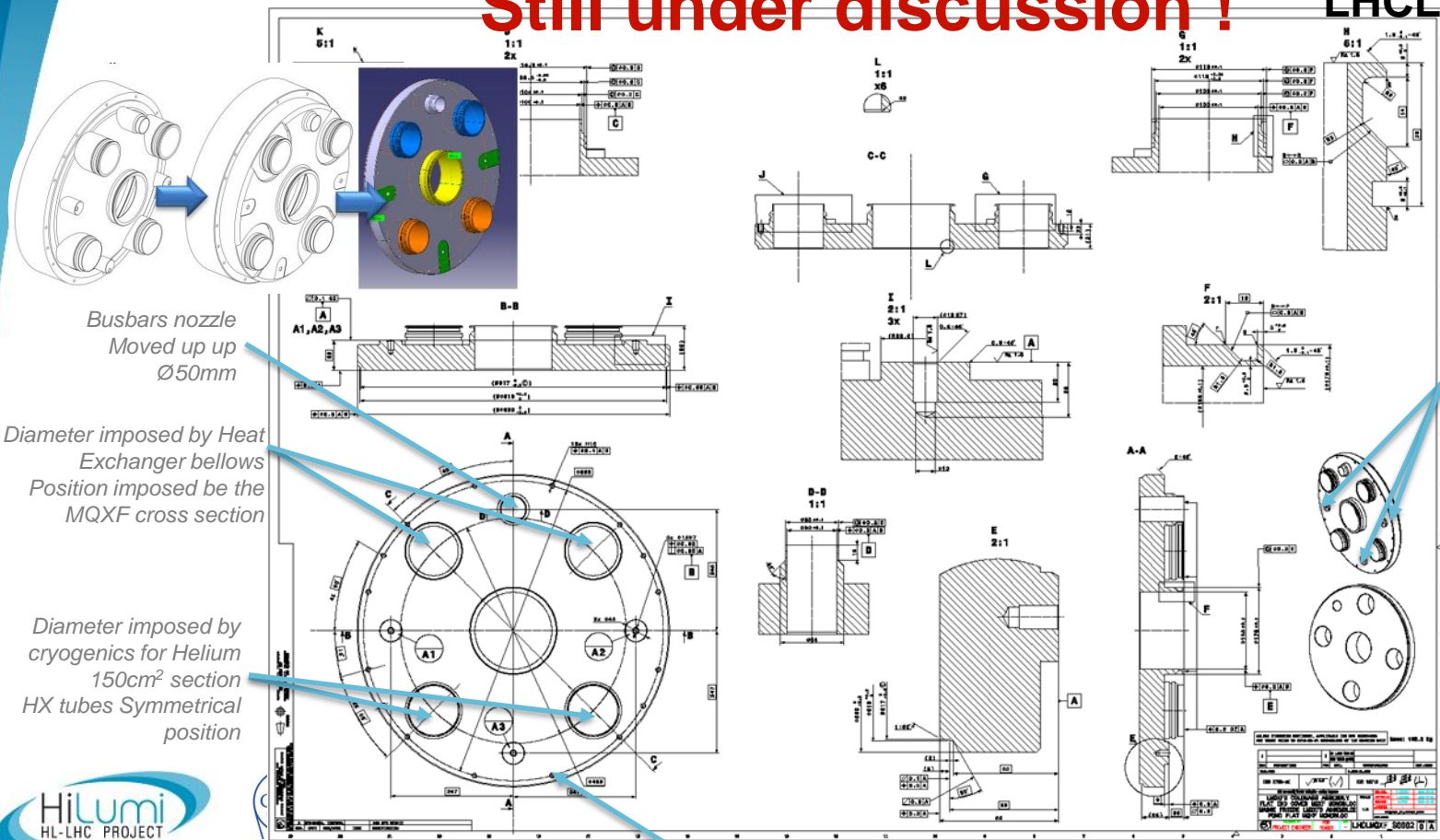
Thermal screen fixation
during cryostating



End covers

Still under discussion !

LHCLMQXF_S0002



Busbars nozzle
Moved up up
 $\varnothing 50\text{mm}$

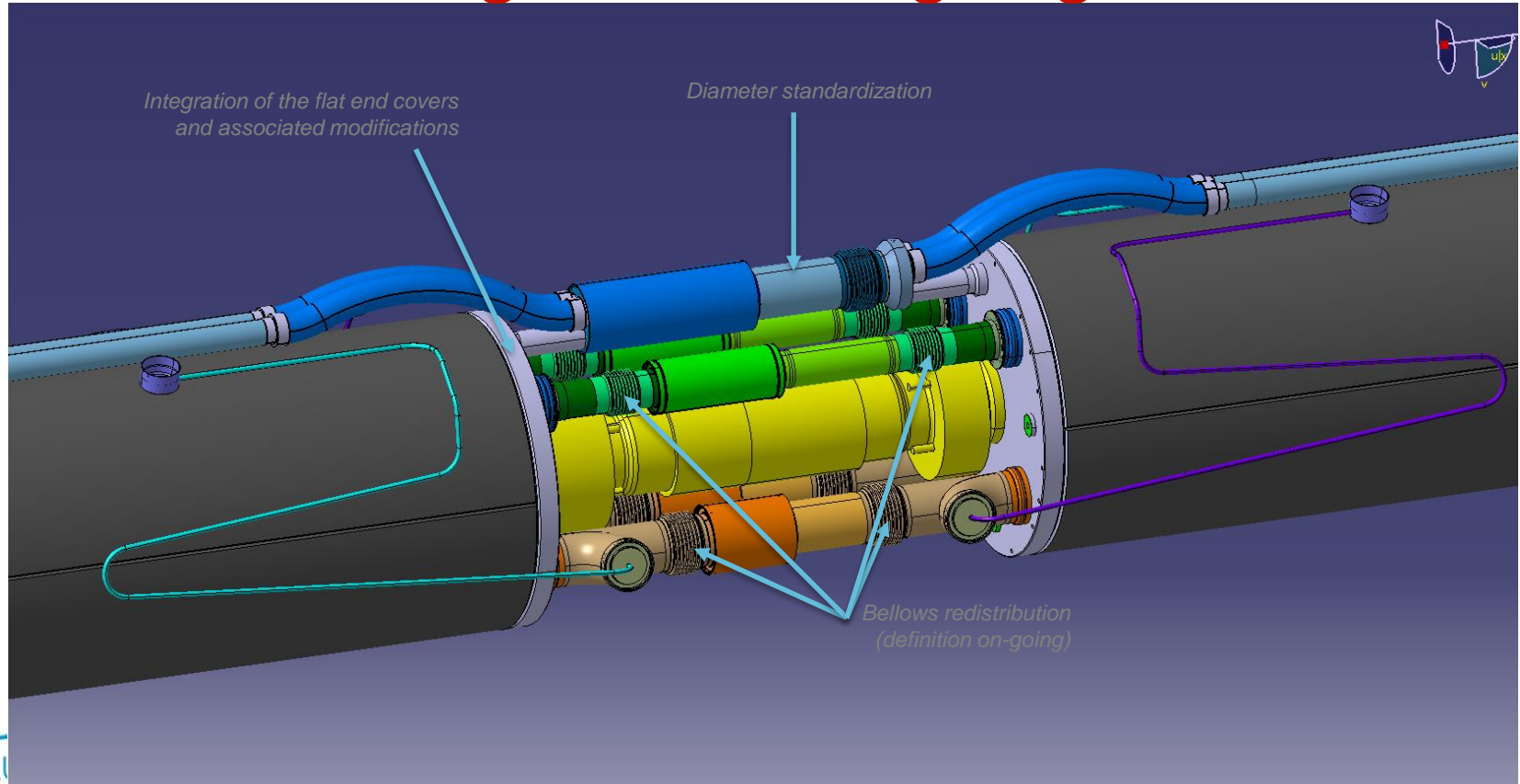
Diameter imposed by Heat
Exchanger bellows
Position imposed by the
MQXF cross section

Diameter imposed by
cryogenics for Helium
 150cm^2 section
HX tubes Symmetrical
position

References plane and
fiducials

Interconnections

Redesign and on ongoing work



Instrumentation and CLIQ

- V-Taps location by the end of May
- Routing of the IFS capillary to be defined
- QH circuit connection by the end of May
- CLIQ leads routing and thermalisation under discussion, still to be defined if they will be delivered with the cold mass or integrated during cryostating