



Overview of PVSS 3.6



Oliver Holme
IT-CO



New features in 3.6

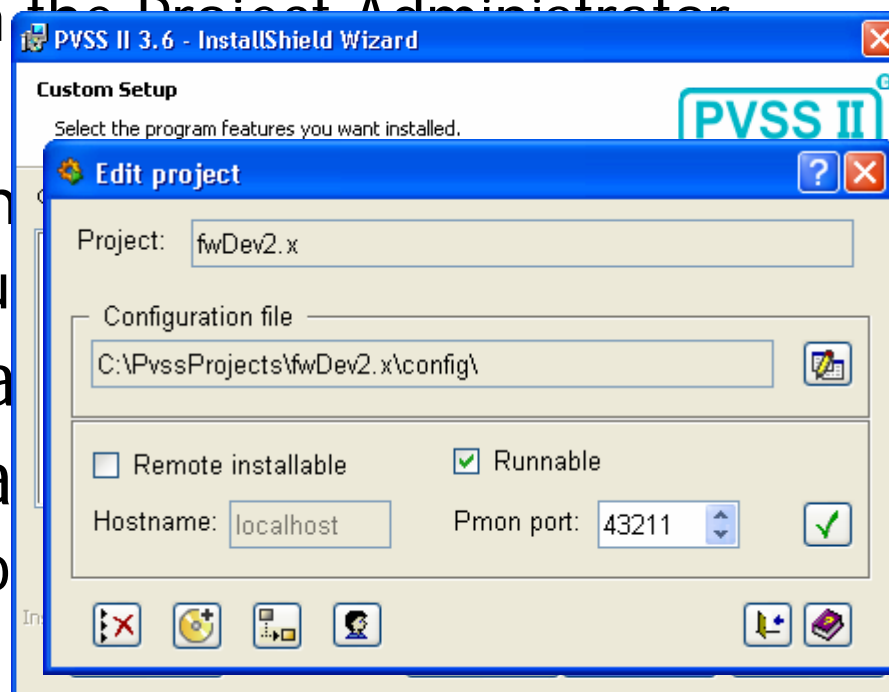


- New Installer for PVSS on Windows
- New Qt User Interface (www.trolltech.com)
 - New GEDI
 - Same on Windows and Linux (including PARA)
 - New & improved widgets
 - Ability to add custom widgets
- Support for new compilers
- Kerberos Authentication between managers
- New “non-permanent” OPC groups
 - Communication with server only when the data is monitored
e.g a dpConnect from a panel
- More than 255 systems in a distributed system

Migration issues (3.1 -> 3.6)



- Upgrading Old Projects
 - Must choose Custom Installation
 - To install the Old Version Support
 - Projects upgraded with the Project Administrator
- New licenses required
 - Reports a warning in the Project Administrator
 - Current licenses valid until 31/12/2006
- All archived data is maintained
- Distributed systems can be upgraded
 - Requires Patch P221 to be installed





Migration issues (3.1 -> 3.6)

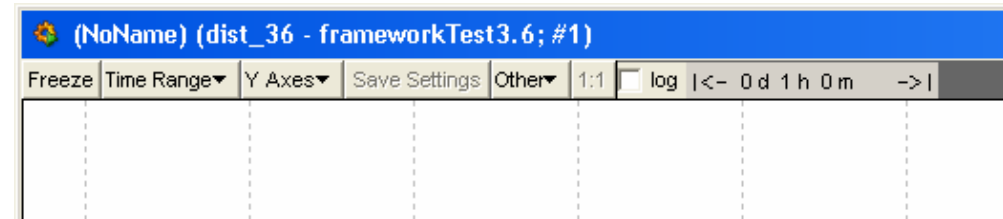
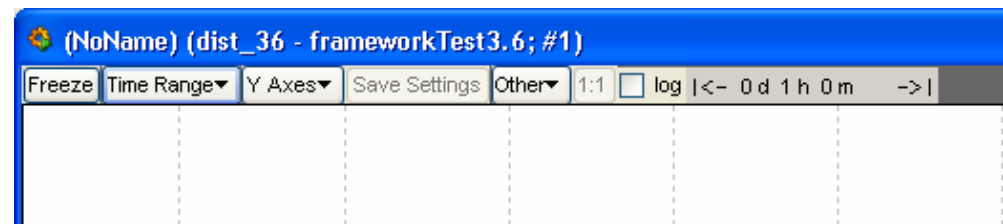


- Some minor incompatibilities with new Qt UI
- PVSS00NV and NG are still available in 3.6
 - Fully compatible with 3.1 developments
 - Do not support new UI features
- To use Qt UI in an upgraded 3.1 project
 - Replace PVSS00NV with PVSS00ui managers
 - Replace PVSS00NG with PVSS00ui -m gedi
- Panels developed in Qt GEDI are not compatible with older user interface managers

New Look & Feel



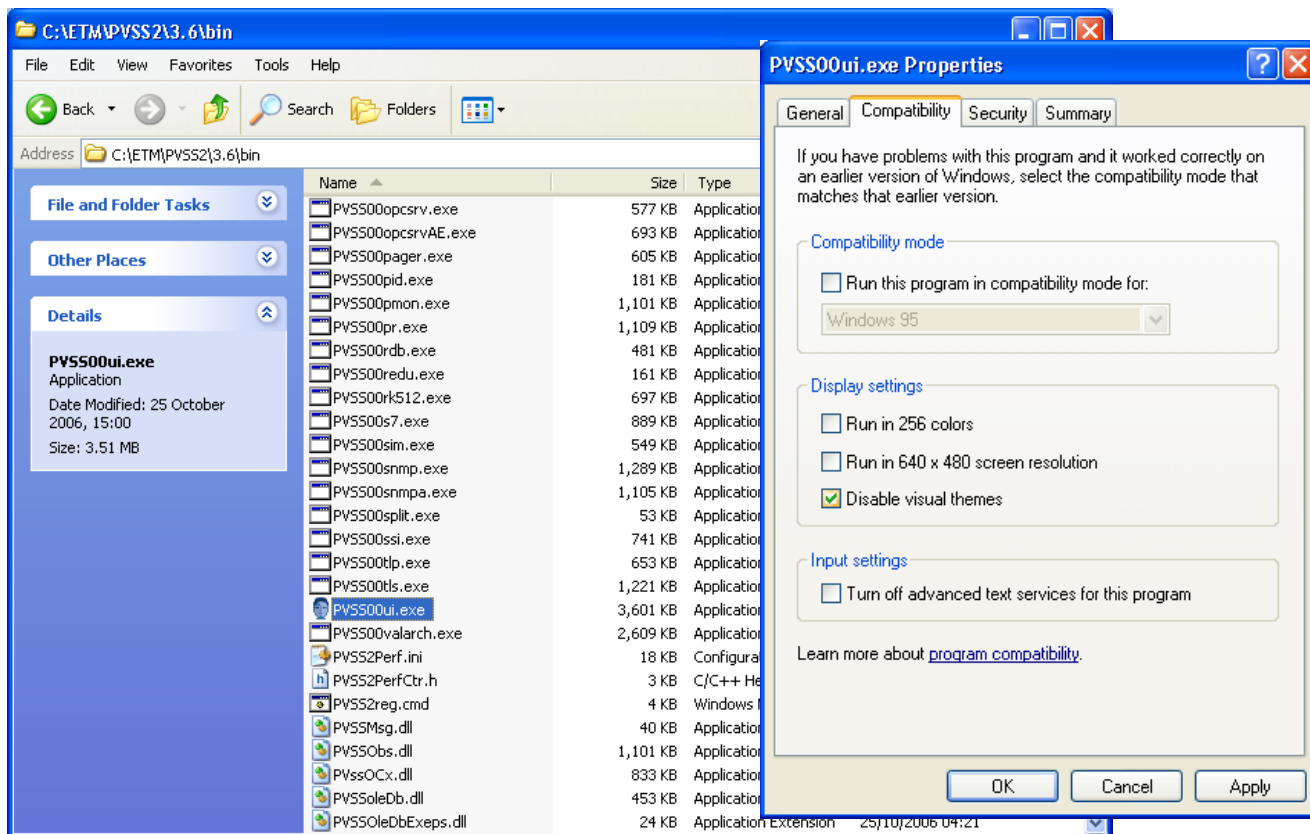
- Look & Feel is now based on Operating System Settings
- Default Windows XP theme can cause strange results
 - Windows XP theme
 - Themes disabled



Disabling Themes in Windows



- Can disable the theme just for PVSS UI



Setting Theme in Linux



- The KDE “plastik” widget style must be used





New Compiler Versions

- The new versions are:
 - Visual Studio 2005 (VC++ 8.0) on Windows
 - gcc-3.2.3 on Linux
- Not all PVSS managers are compiled with new versions on Windows
 - Must use older compilers for
 - CTRL extensions
- Custom API managers can use new compilers
 - All API managers must be recompiled for 3.6

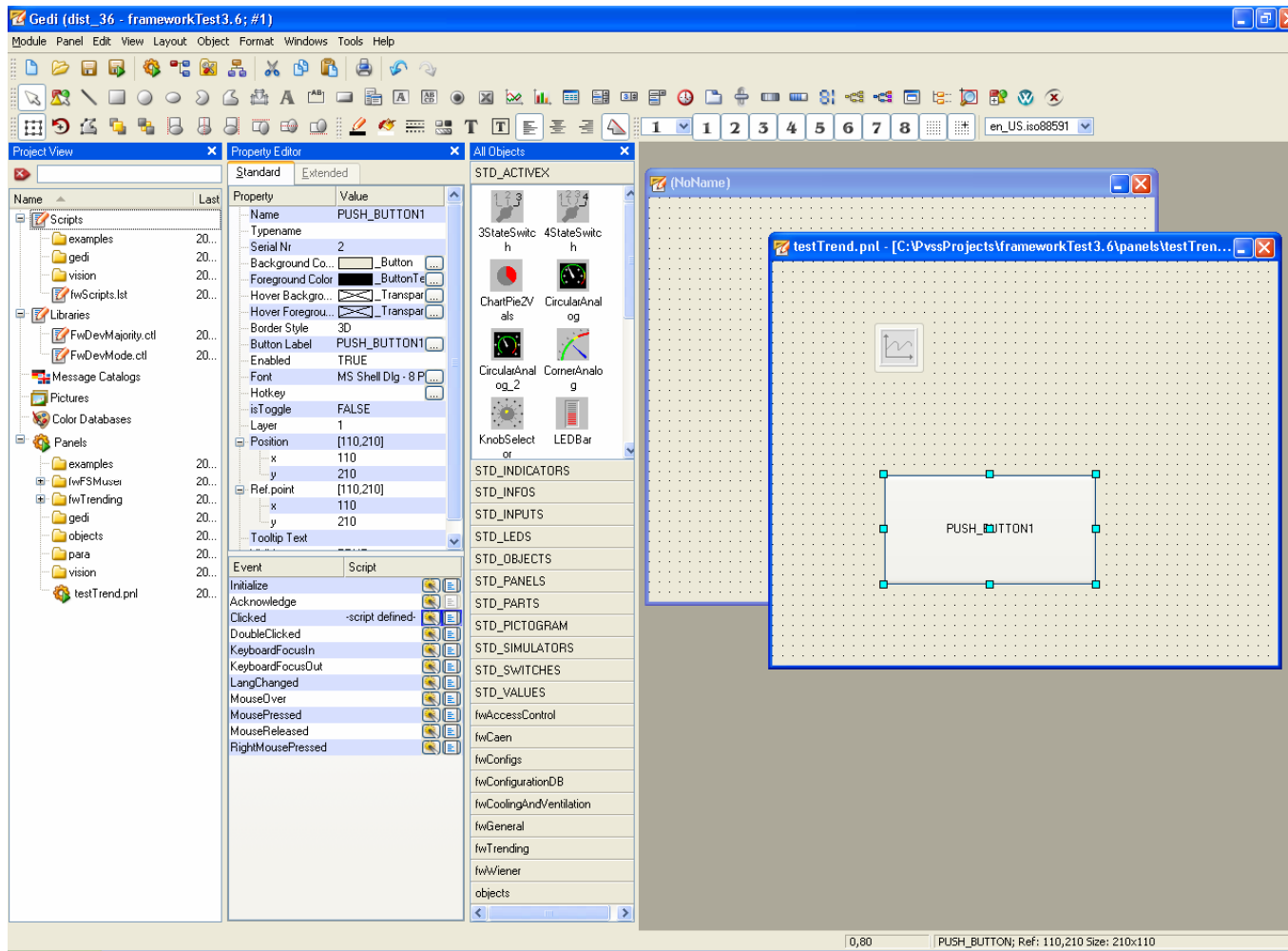


JCOP Framework Issues

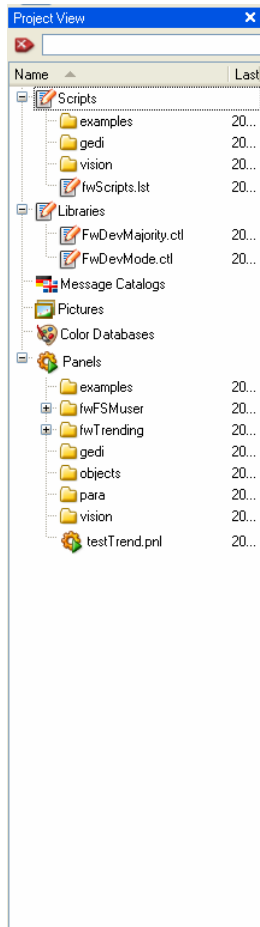


- One more JCOP Framework for PVSS 3.1
 - Future versions will be 3.6 only
- 3.6 compatible version will use and benefit from
 - New PVSS Tree Widget
 - New PVSS Trending
- Minor difference in behaviour on 3.6
 - When pressing "Restart Project" in Framework Installer the UI stays running until all other managers are stopped
 - Managers showing framework panels close last when stopping the project

New GEDI

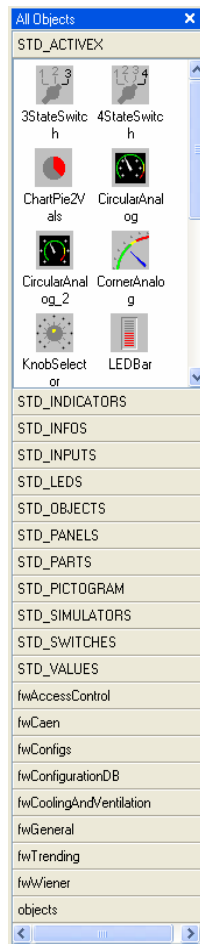


New GEDI Features



- Project View
 - Shows all files in Project Path
 - Including sub-directories
 - File name searching

New GEDI Features



- Catalog view of all objects
 - Summarises all project paths
 - Can view individual paths if required

New GEDI Features



- Clickable errors in the Log Viewer

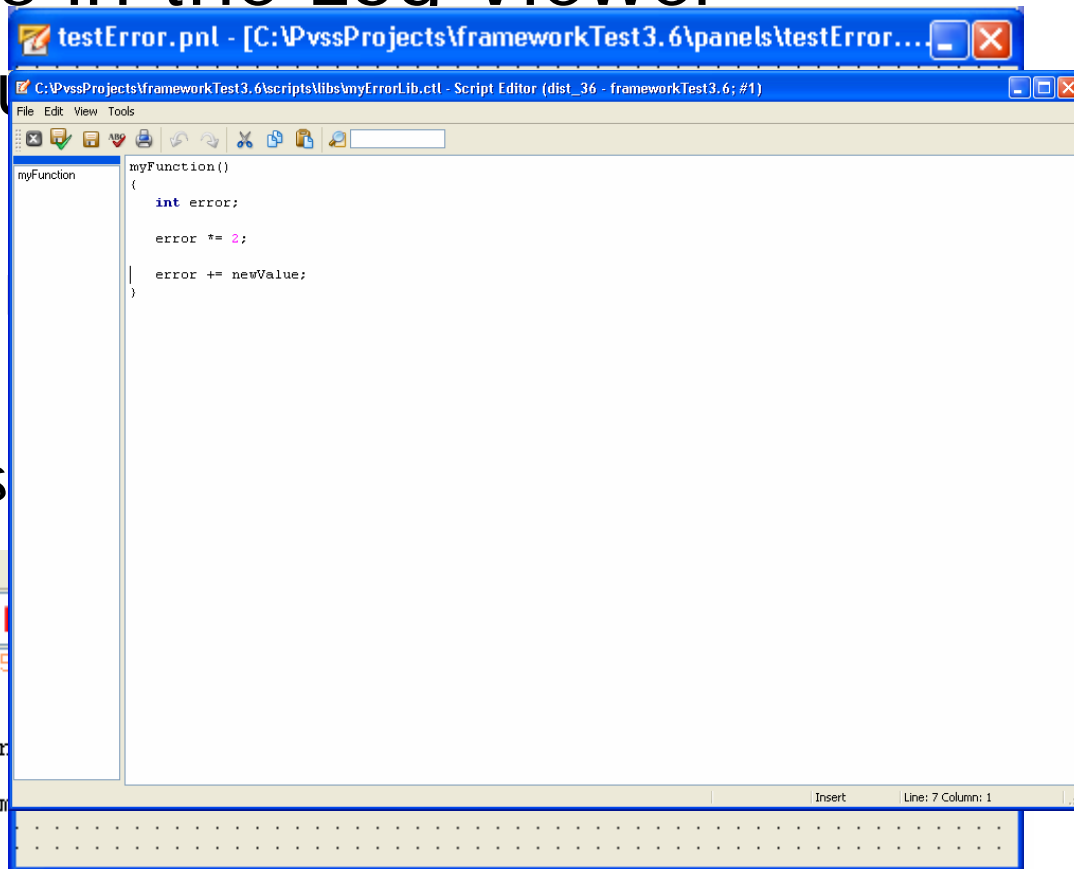
- Log Viewer menu

- Menu: View -

- Double click on

- Panel errors
- Library errors

```
File View
PVSS00ui (1), 2006.11.14 13:5
Module: _QuickTest_
Panel: testError.pnl []
Object: 0 named: "ApplyButton
Script: Clicked
Library: C:\PvssProjects\fram
Line: 7, newValue
```



Editing Scripts



- Editing scripts and libraries in sub-directories

- Panel: testTrend.pnl - Script Editor (dist_36 - frameworkTest3.6; #1)
- Panel: testTrend.pnl - Script Editor (dist_36 - frameworkTest3.6; #1)

changes

te

```
Panel: testTrend.pnl - Script Editor (dist_36 - frameworkTest3.6; #1)
File Edit View Tools
[Icons]
[Tree View]
[Code Editor]


```

-// [PUSH_BUTTON1] [2] - [Clicked]
main()
{
 int i = "MyValue";
}

```


modified Insert

Panel: testTrend.pnl - Script Editor (dist_36 - frameworkTest3.6; #1)
File Edit View Tools
[Icons]
[Tree View]
[Code Editor]


```

main()
{
 int result;

 fwInstallation_componentInstalled("fwTrending", "2.3.4",
 if(result == 1)
 {
 this.tooltipText = "Click to view the trend";
 this.enabled = TRUE;
 }
 else
 {
 this.tooltipText = "The fwTrending framework com
 this.enabled = FALSE;
 }
}

-// [PUSH_BUTTON1] [2] - [Clicked]
main()
{
 int i = "MyNewValue";
}

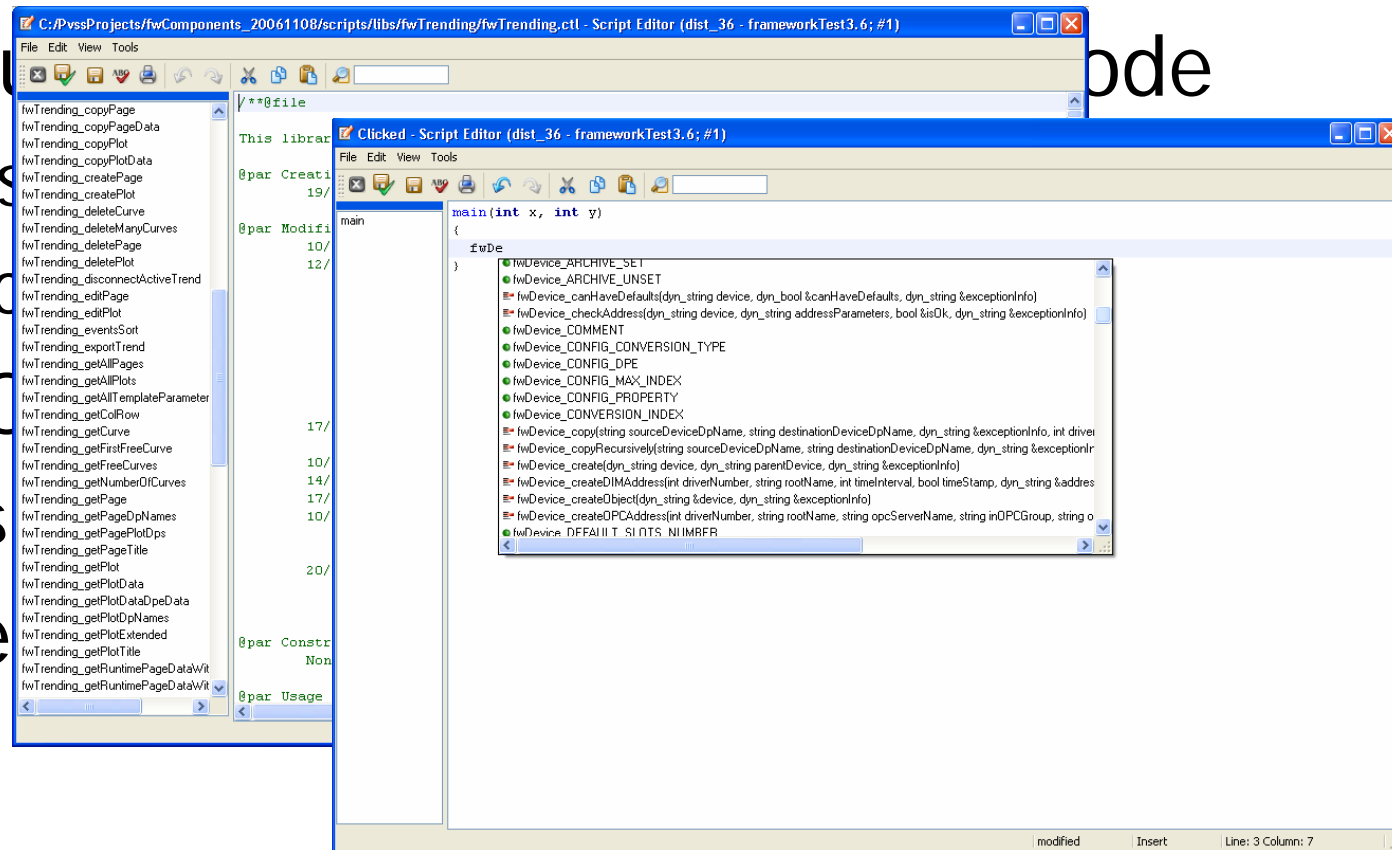
```


modified Insert Line: 58 Column: 17
```

Editing Scripts



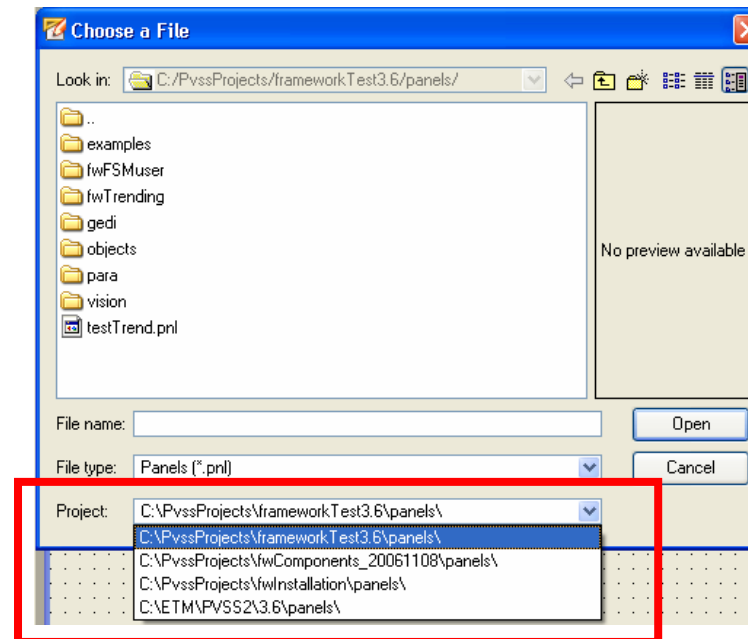
- List of functions visible when editing a library
- Tab and code
 - Cons
 - Func
- Ctrl + C
 - Was
- (Gene



Choosing Paths



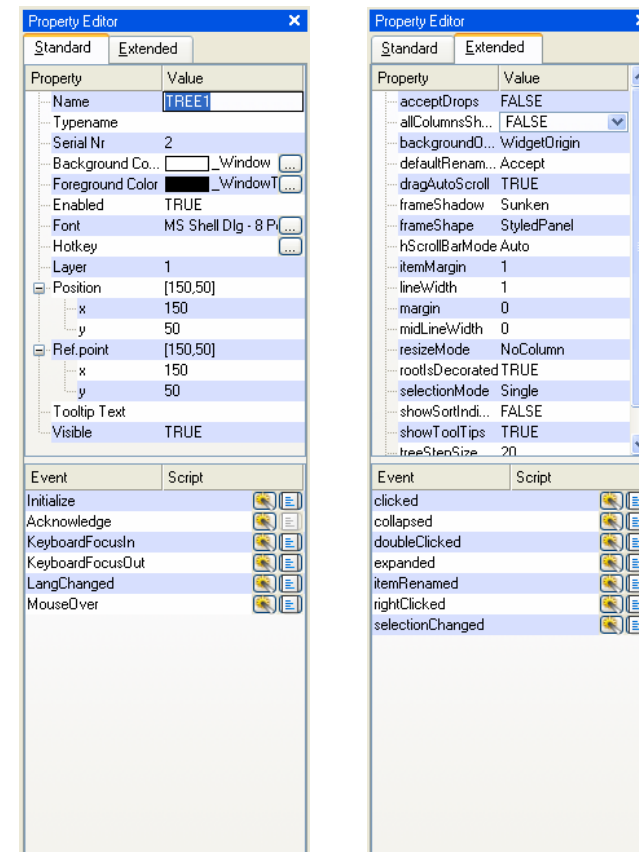
- New file selector
 - Project Path is chosen at the bottom
 - Not at the top like in PVSS 3.1



Editing Graphical Objects



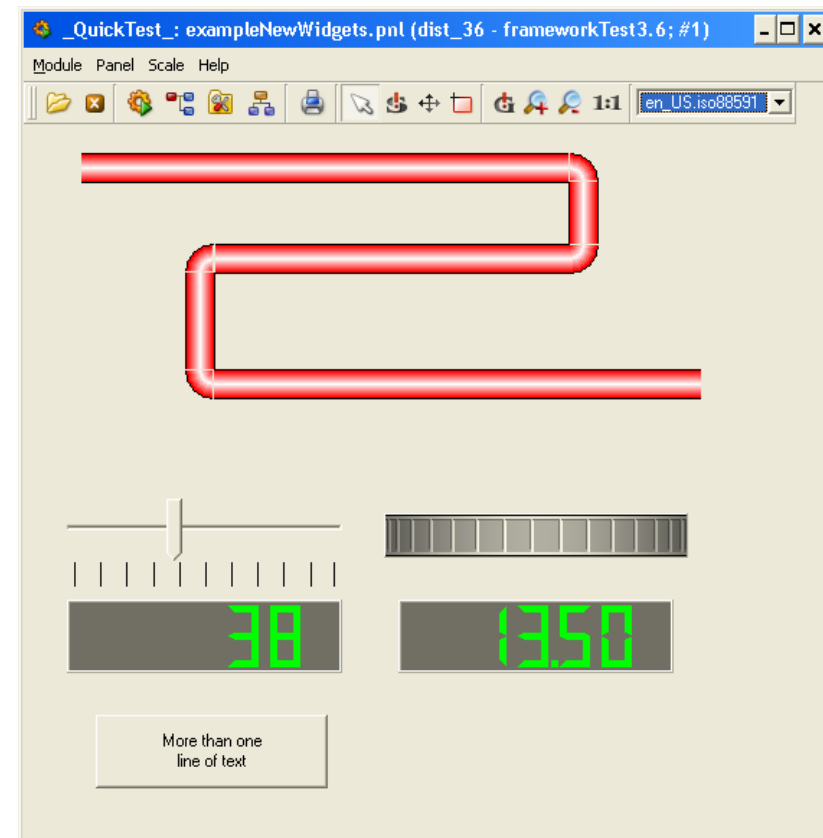
- Property sheet is divided in two tabs
 - Standard
 - Extended
- Properties and events are split across the tabs



New Graphical Objects



- New Basic Widgets
 - Pipe
 - Slider & Thumbwheel
 - LCD Display
- Improvements
 - Multi-line button labels





New Graphical Objects



- Tree Widget
- Improved Trending Widget
- Embedded Module (panel-in-panel)
 - No longer based on ActiveX
- Widgets in Table Cells
- Rich Text Editor



More Information



- Check the PVSS Online Help with 3.6
 - New section called **Features 3.6**
 - Plus help for new and improved features
- Our Controls TWiki Page
 - New section related to PVSS 3.6

<http://twiki.cern.ch/twiki/bin/view/Controls/IT-CO-BE>