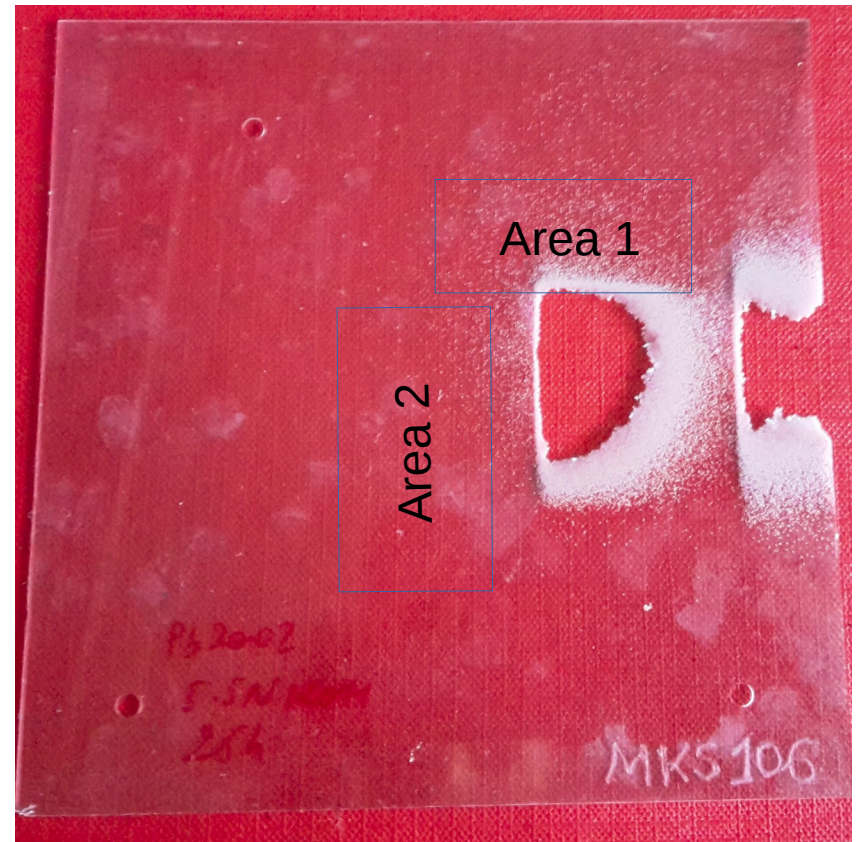


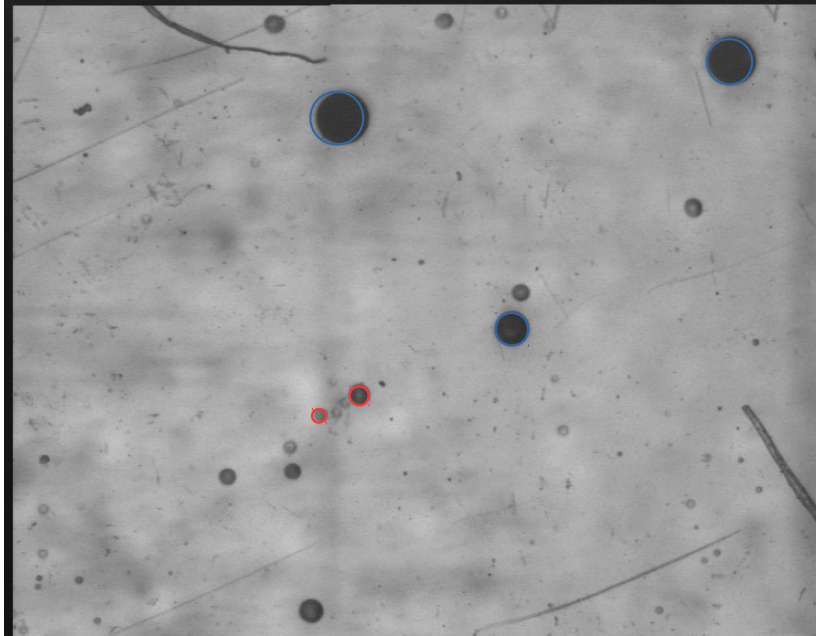
# Status of the Calibration

L. Patrizzii, A. Maulik, V. Togo and Z. Sahnoun

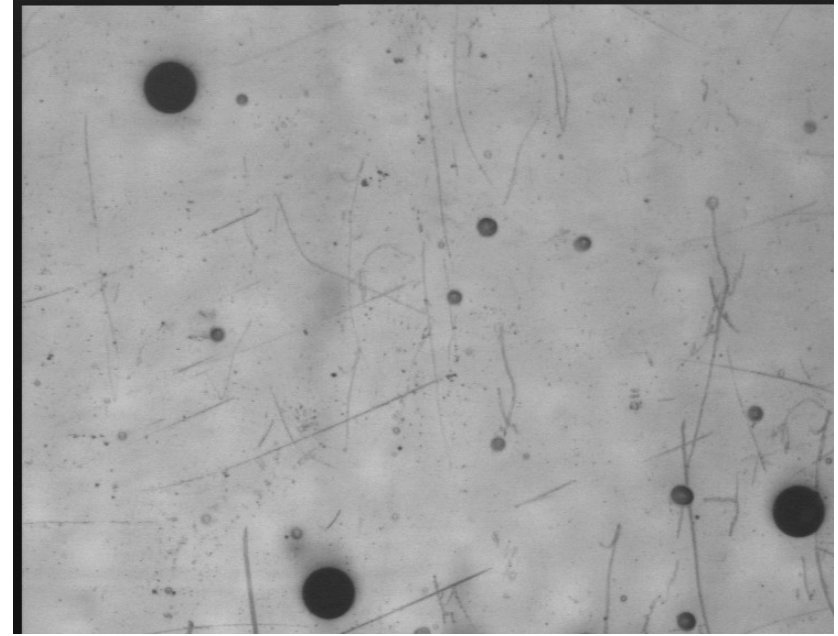


- 4 foils of Makrofol exposed to Pb and etched 25 h, 5.5 N KOH + 20% Ethyl alcohol + MEK at 40°C in the small tank, MKS106, MKS107, MKS108 and MKS109
- Scan of Area2 optimised for small tracks (scan of Area1 and optimisation of large tracks in progress)
- Analysis of Area2 already scanned

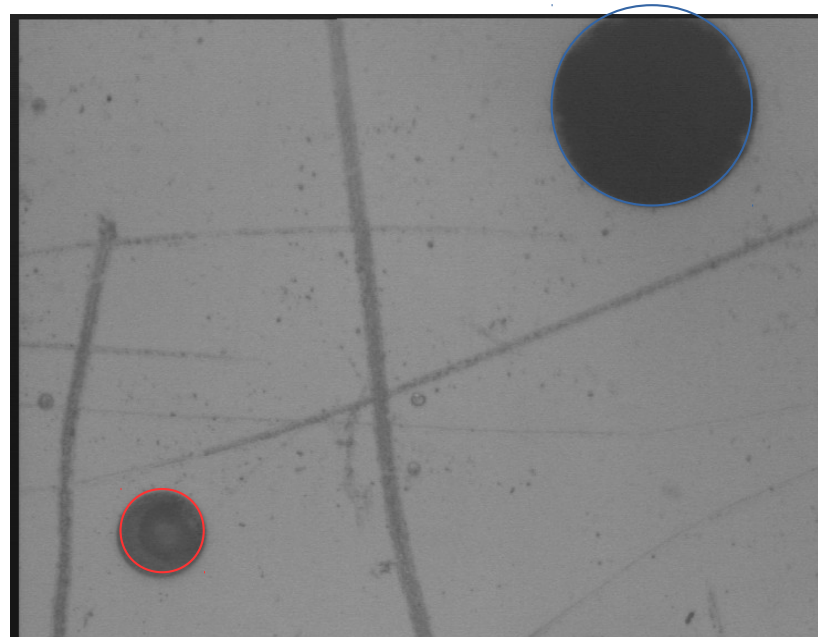
x 5 mag



x 5 mag



Makrofol threshold ~ 50  
optimising for small tracks  
i.e. small Z



x 10 mag

# Analysis

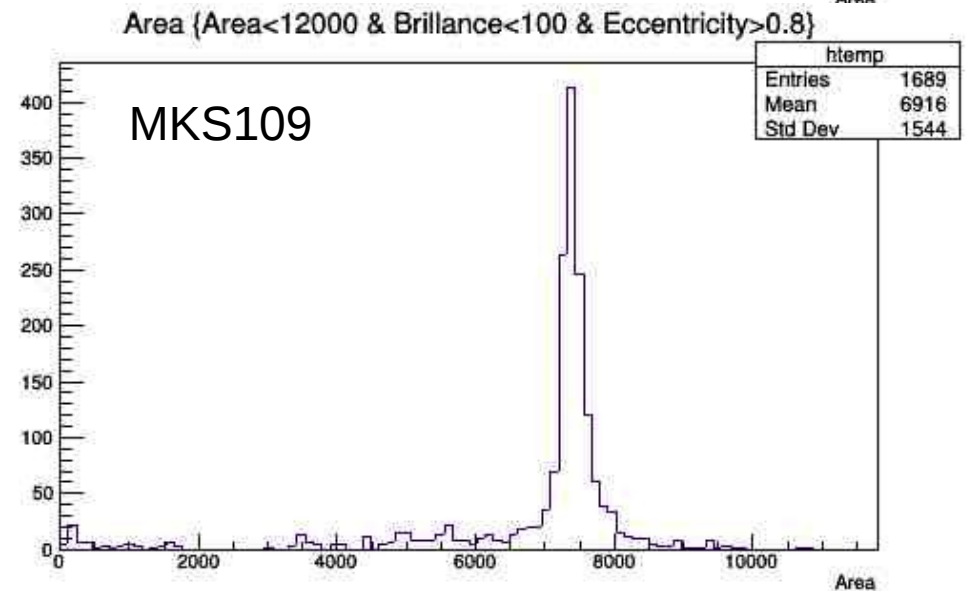
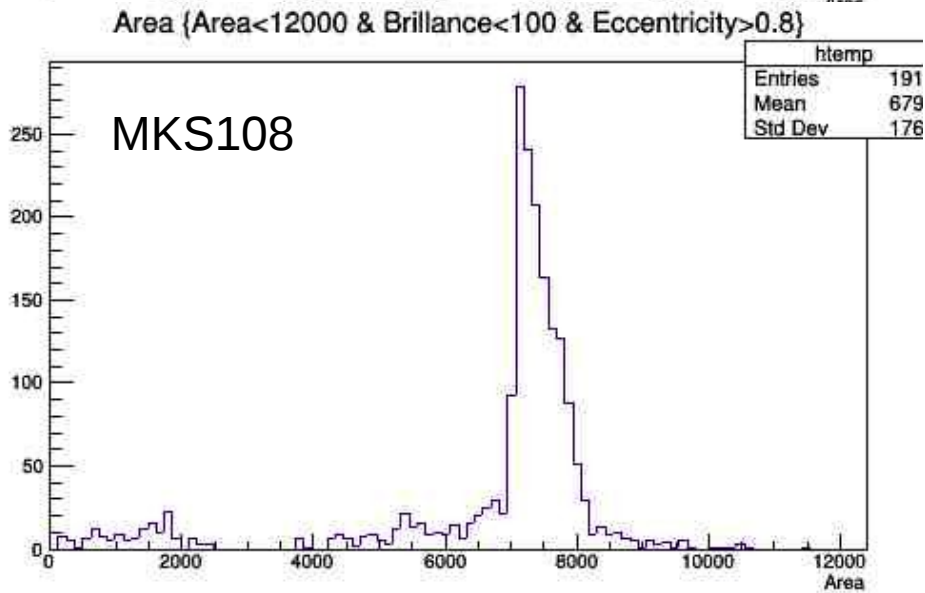
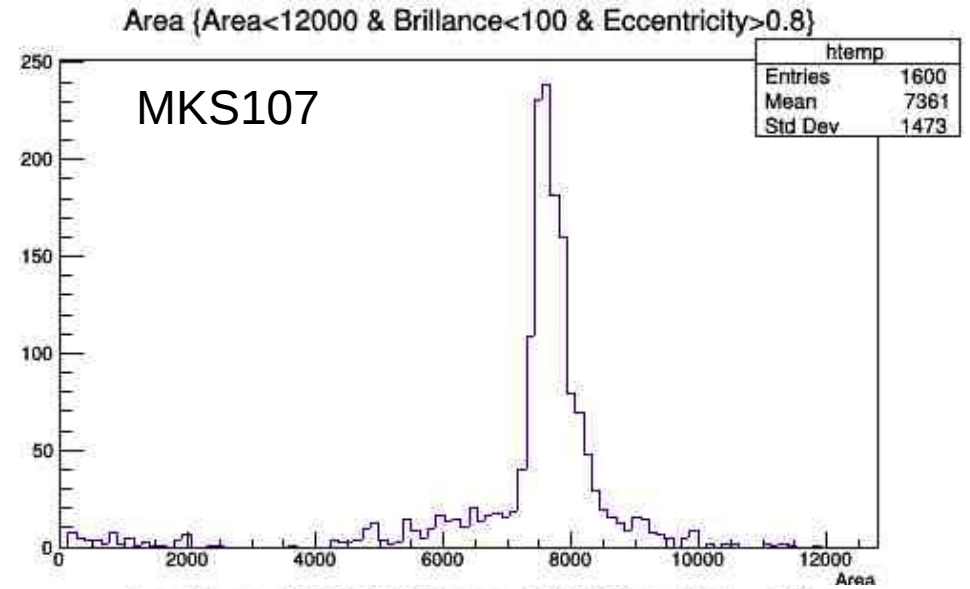
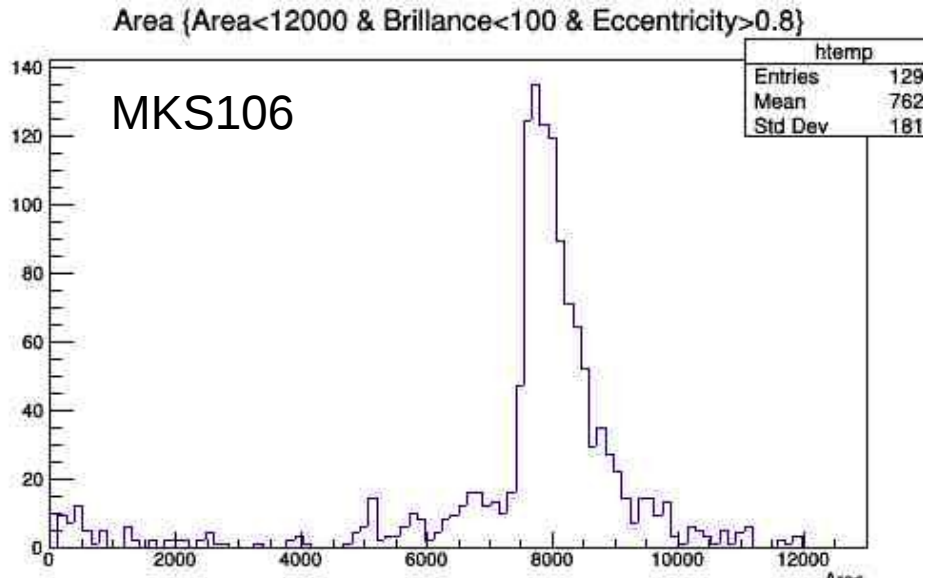
Scanned Files are passed through the analysis procedure

Major steps

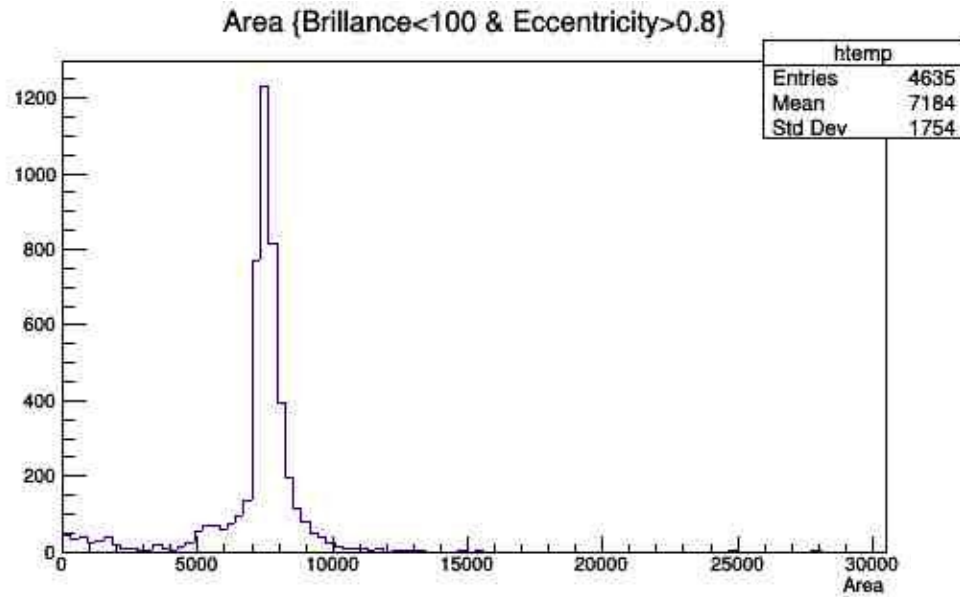
- Elbeck files transformed to .dat, .root files
- foil's alignment : common reference system
- Tracking of ion's path
- averaging areas on the stack
- areas distribution

...

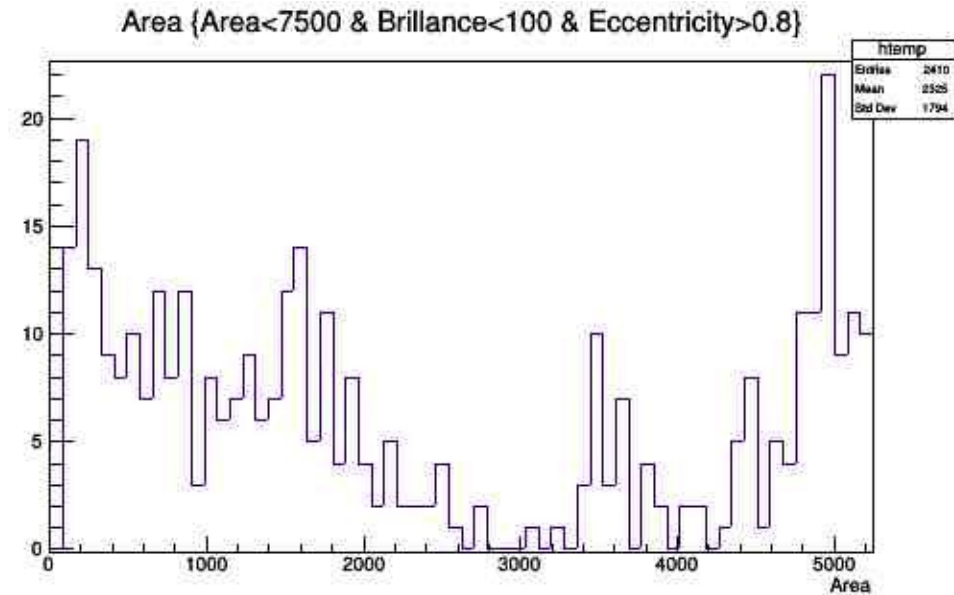
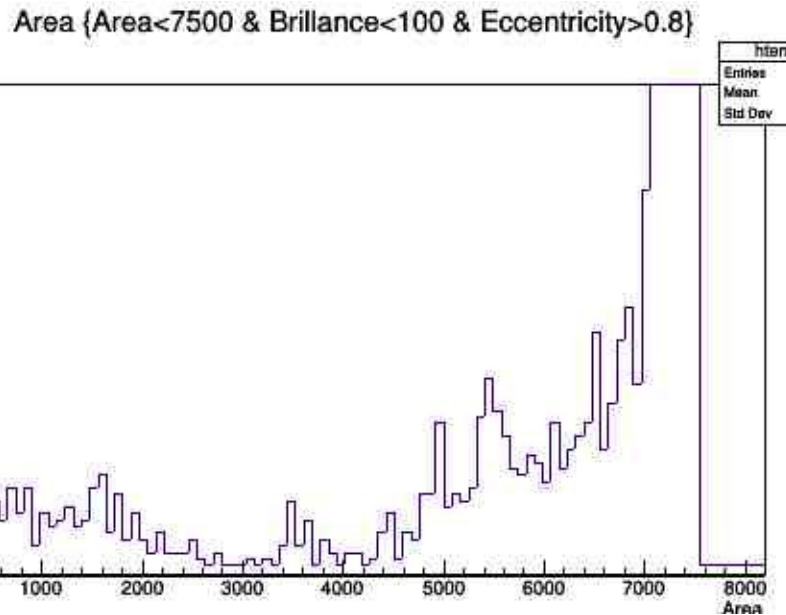
# Analysis



# Analysis



MKS 106 → 109 after alignment and tracking



→ Still in progress