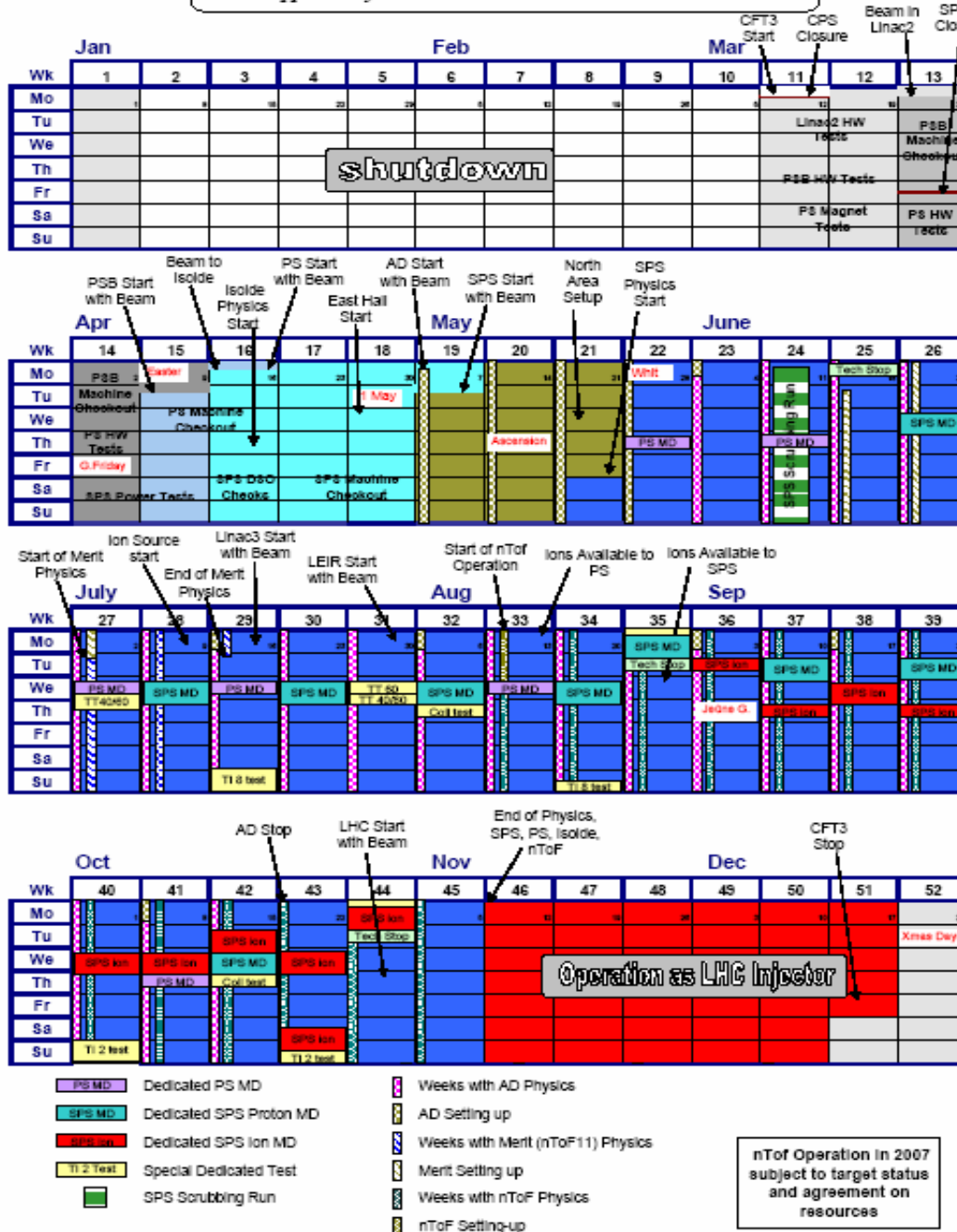


Session 3: The LHC Injector Chain

Introduction

P. Collier

2007 Accelerator Schedule
Approved by the Research Board 29th November 2006



DG (LHC Cost & Schedule) ...

“Still on course for the engineering run in November 2007” – our highest priority.

“...continue until this is achieved before entering the shutdown”

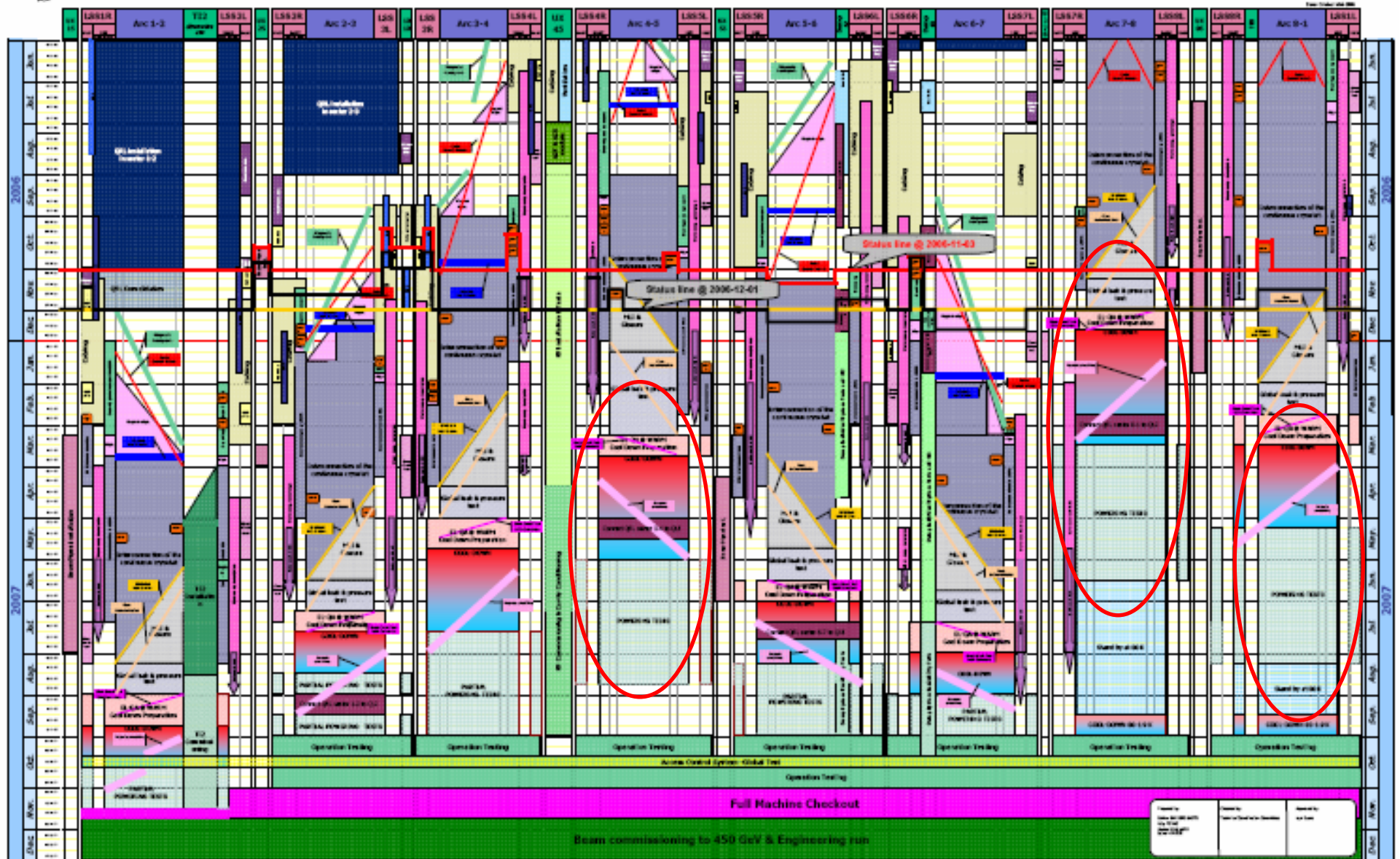
We must be ready with LHC proton beams by 1st Nov.

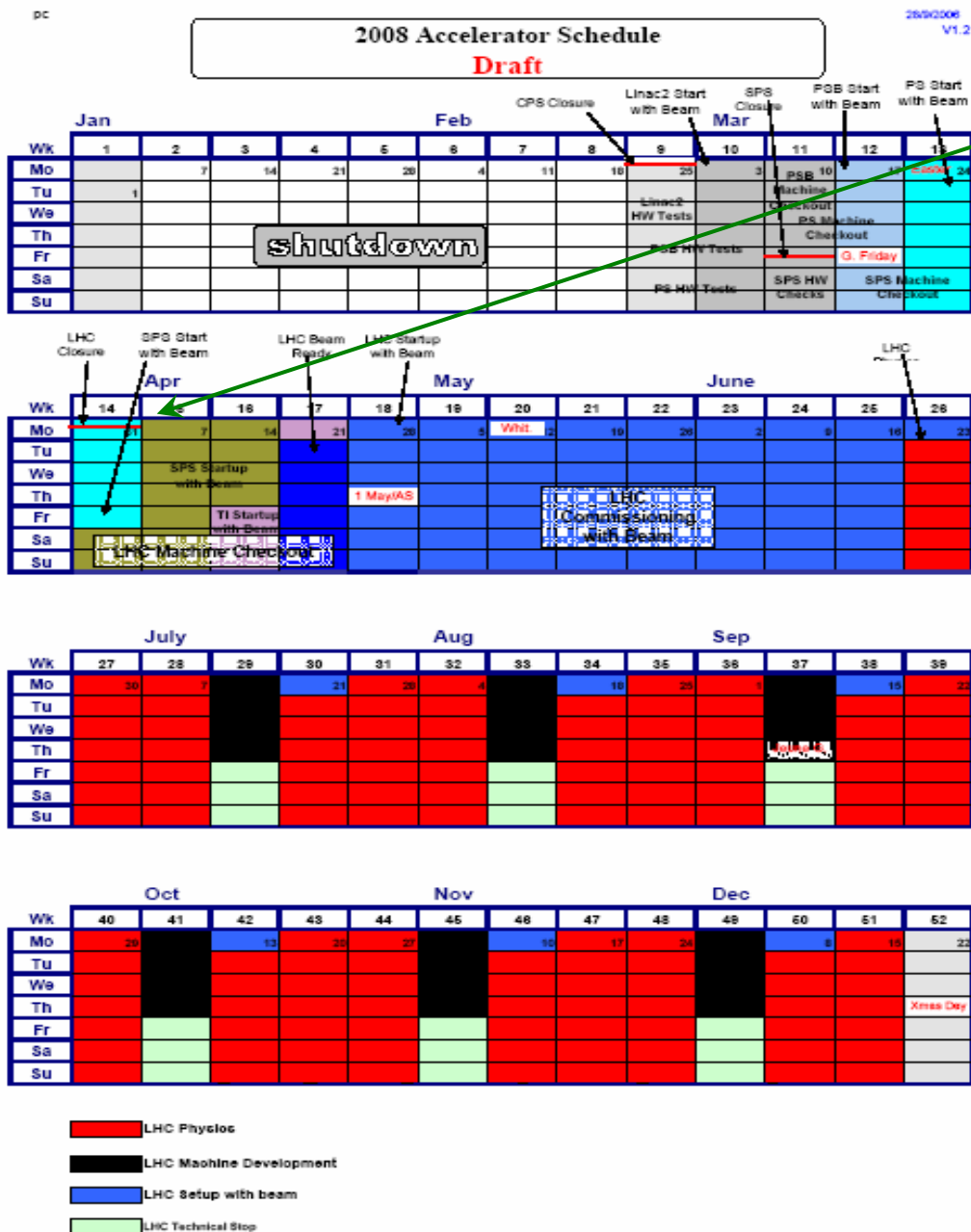
Presently a heavy schedule of Ion studies to prepare Pb⁸²⁺ in the SPS ... this falls in the final stage of the LHC HWC/machine checkout



LHC Construction and Installation General Co-ordination Schedule

Project Name: LHC (Hadron) - Arcs 1-11
Project Manager: P. Collier
Version: 1.0
Date: 2006-11-03





The draft 2008 schedule has been drawn up on the basis that the LHC should be closed again by 31st March 2008

↪ This was when 3 sectors were being completely hardware commissioned in 2007

↪ Now looks less likely with plans to delay 8-1 and make 4-5 the next sector to cool down.

↪ This will mean the length of the 2007/2008 shutdown will probably increase ... Which is better for everyone ...

↪ No attempt yet to schedule the other programmes ...

The period from ~August until first high energy collisions in the LHC (June 2008) is going to be very messy ...

- ↪ A flexible approach will be needed towards planning both the shutdown activities and the operation of the facilities ...
- ↪ We may have to run right up to the end of 2007 (& beyond?) to complete the engineering run
- ↪ The shutdown will hopefully be longer than the 7 weeks shown ... But there will be many activities in LHC as well as the injectors
- ↪ The start-up 2008 will be as short as possible to deliver beam to LHC asap.
- ↪ Once the LHC starts taking beam there is going to be huge pressure to deliver ...
- ↪ The rest of the machines will have to fit around the LHC ...