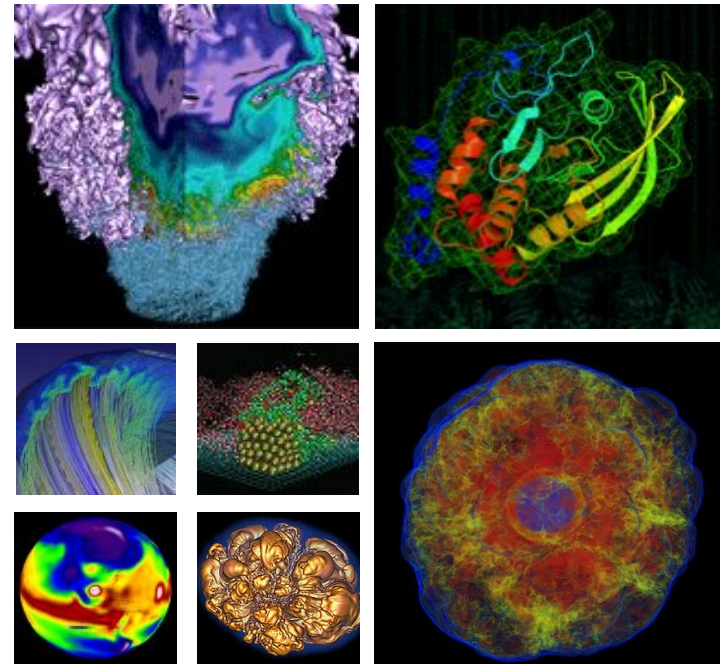


PDSF Site Report



**Georg Rath, James Botts, Tony Quan,
Jan Balewski, Jefferson Porter**

HEPIX18 Fall/08.10.2018

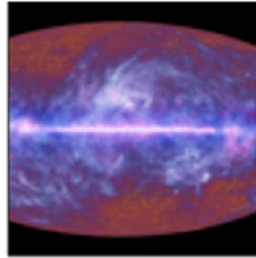
National Energy Research Scientific Computing Center



NERSC history of experimental & observational science projects



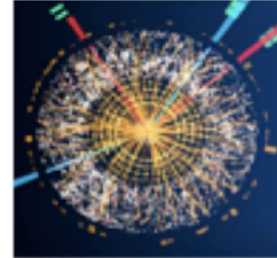
Palomar Transient
Factory
Supernova



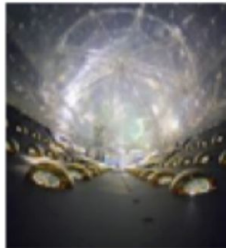
Planck Satellite
Cosmic Microwave
Background
Radiation



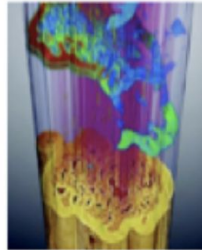
Alice
Large Hadron Collider



Atlas
Large Hadron Collider



Dayabay
Neutrinos



ALS
Light Source

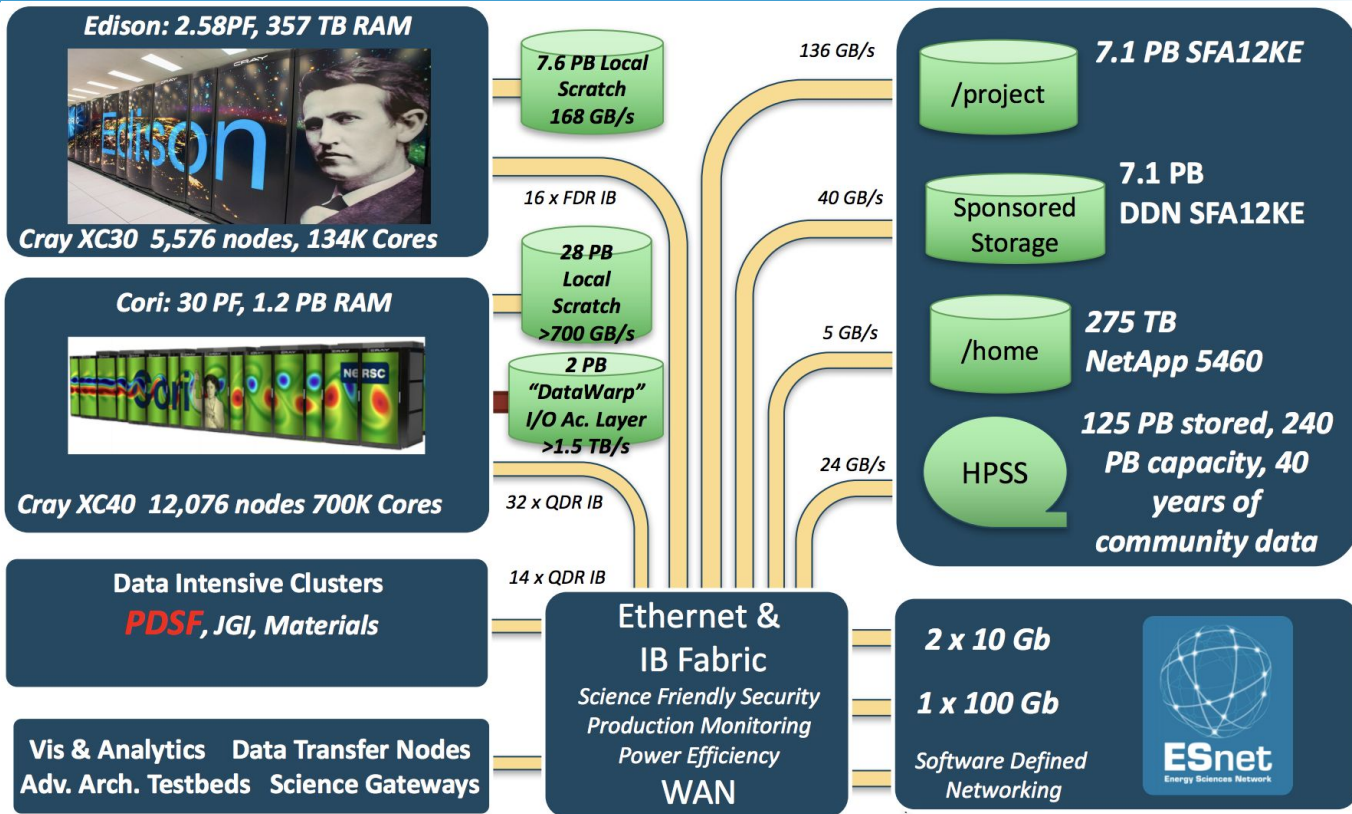


LCLS
Light Source



Joint Genome Institute
Bioinformatics

NERSC Systems Today



PDSF: Parallel Distributed Systems Facility serving the community since 1996



- Serial, high throughput
- Slurm workload manager
- Broad user base
- FairShare scheduling
 - Projects “buy in” to PDSF and the priority is adjusted accordingly
- STAR Tier-1, ALICE Tier-2, ATLAS Tier-3

What happened since last time...



- **Sunsetting PDSF by April 2019**
- **Migration to Slurm completed**
- **Queues restructured for user needs**
 - **CHOS/non-CHOS partitions**
- **Continuous effort to move to Cori**
 - **CVMFS on Cray**

A year of Slurm



- **Memory limits enforced - stable cluster**
 - **User education necessary**
- **FairShare is problematic**
 - **Fair and Share are overloaded terms**
 - **Needs adaptation to workload**
 - **Set User Expectations**
- **Realtime/Debug queues enable interactive compute**

What happens next



- **Continuous effort to move to Cori**
 - **CVMFS on Cray**
 - **Move to non-CHOS only OS (Shifter)**
- **ALICE moving to Shifter containers**
- **Edge Services will move into SPIN**
- **Migration to Cori will continue**



Thank You