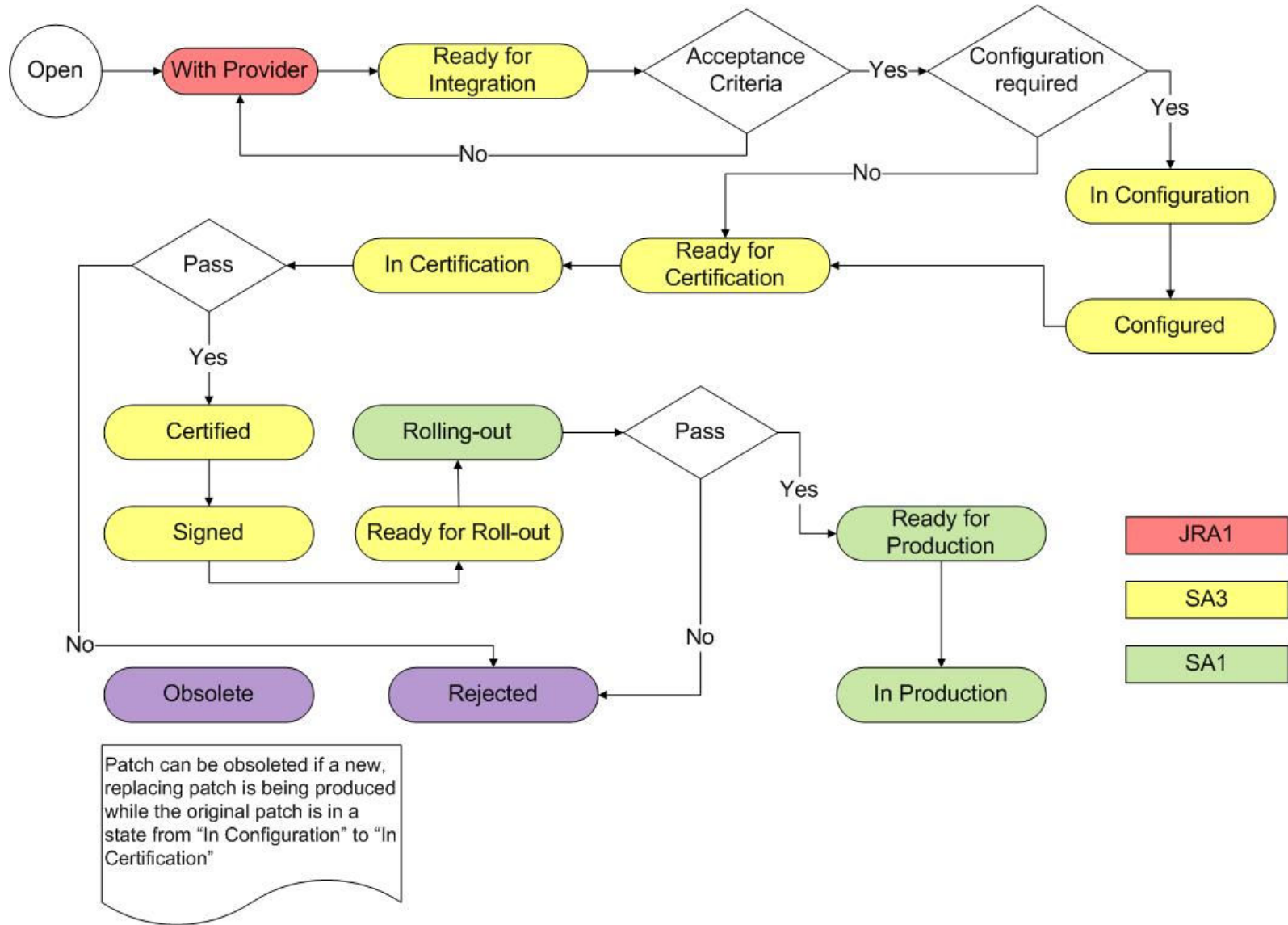


Developer's Guide updates

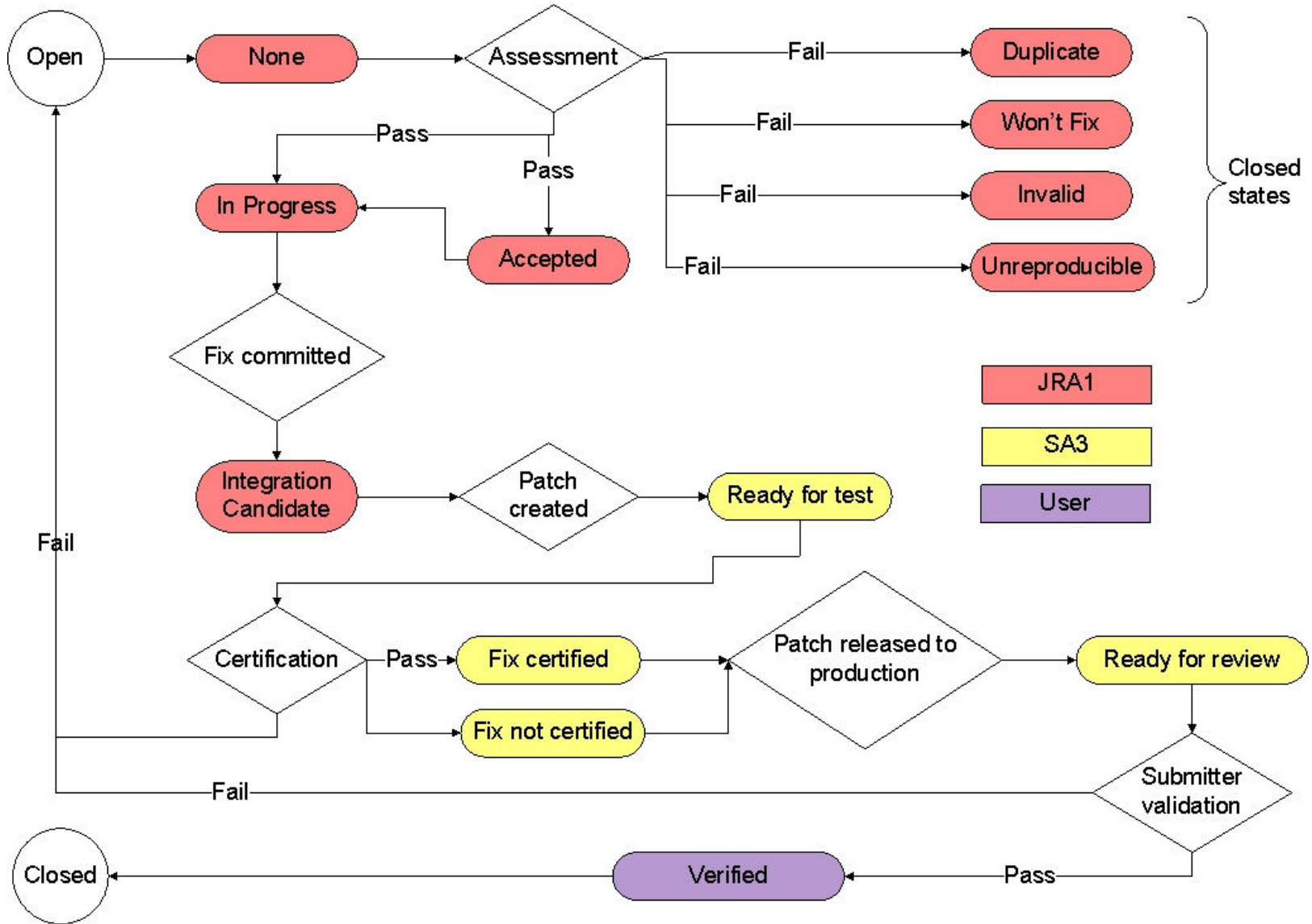
Andreas Unterkircher, CERN

JRA1/SA3 All Hands Meeting, CERN 2009

- **Link to Developer's Guide TWiki**
 - <https://twiki.cern.ch/twiki/bin/view/EGEE/DevelopersGuide>
- **PDF version in EDMS**
 - <https://edms.cern.ch/document/979788/1>



- JRA1
- SA3
- SA1



- **Which components should be grouped in a subsystem?**
 - Components with significant relationship at development/build time
 - Two components go in the same subsystem if and only if they need to developed/built together
 - A single component should be buildable without the need to build the whole subsystem. Avoid to define information on the subsystem level
- **Subsystem configurations are empty apart from the list of component configurations**

- **Component configurations**
 - Specify only dynamic dependencies in the Default platform for direct dependencies
 - Do not override properties
 - Do not specify .DEFAULT properties
 - Should only have the default platform attached. Exceptions have to be communicated
- **Project configurations**
 - Specify the .DEFAULT properties per platform
- **Link in the Developer's Guide:**
 - https://twiki.cern.ch/twiki/bin/view/EGEE/DevelopersGuide#3_7_How_to_write_ETICS_configura

- **For every product team a mailing list must exist which sends a notification on every commit**
 - https://twiki.cern.ch/twiki/bin/view/EGEE/DevelopersGuide#2_7_Mail_notification
- **A bug must not stay in status “None” for more than a week. Once a bug is accepted it should be immediately assigned to a patch for future release**
 - https://twiki.cern.ch/twiki/bin/view/EGEE/DevelopersGuide#4_3_How_to_handle_bugs

- **Guidelines on backward compatibility**
- **Man pages mandatory for CLIs**
- **Bug triage**
- **Nightly builds responsibilities**
- **How to write ETICS configurations for srpms**
- **Information on how to use ETICS properties**
 - We wait for updated ETICS documentation
- **Changes related to product teams**
 - After this meeting...