

Hall Infrastructure *Progress at RAL!*

Chris Nelson CEng
MICE CM17 February 2007

- Apologies couldn't come yesterday
- Very Very busy at RAL
- Easier, and better to show photos
- Everything since last CM16 last October
- Roughly chronological
- 52 slides...

- Decay solenoid split/move
- Hall stairs
- Cellar
- Floor painting
- Linde eqpt arriving
- (Mouse) Holes!
- CMS area clearing
- Decay solenoid trolley
 - solenoid active repair
- Radiation Shielding (blocks)
- Q35 Magnet refurbishment
- **Current Layout – more details individual areas**
- Imminent tasks!
- Conclusion

CDM: Construction, Design and Management Regulations!

Originally for building sites. Required for MICE Hall unfortunately.

- Restricted access
- Method statements, Risk assessments, safety plan, 'competence'
- 'Principal Contractor' is now within MICE, more control – but more work
- Big burden, has caused delays, especially with Linde commissioning

- 2 sets of gates
- Many Signs



Strict Sign-in



Decay solenoid split/move



Decay solenoid split/move



Decay solenoid into MICE Hall

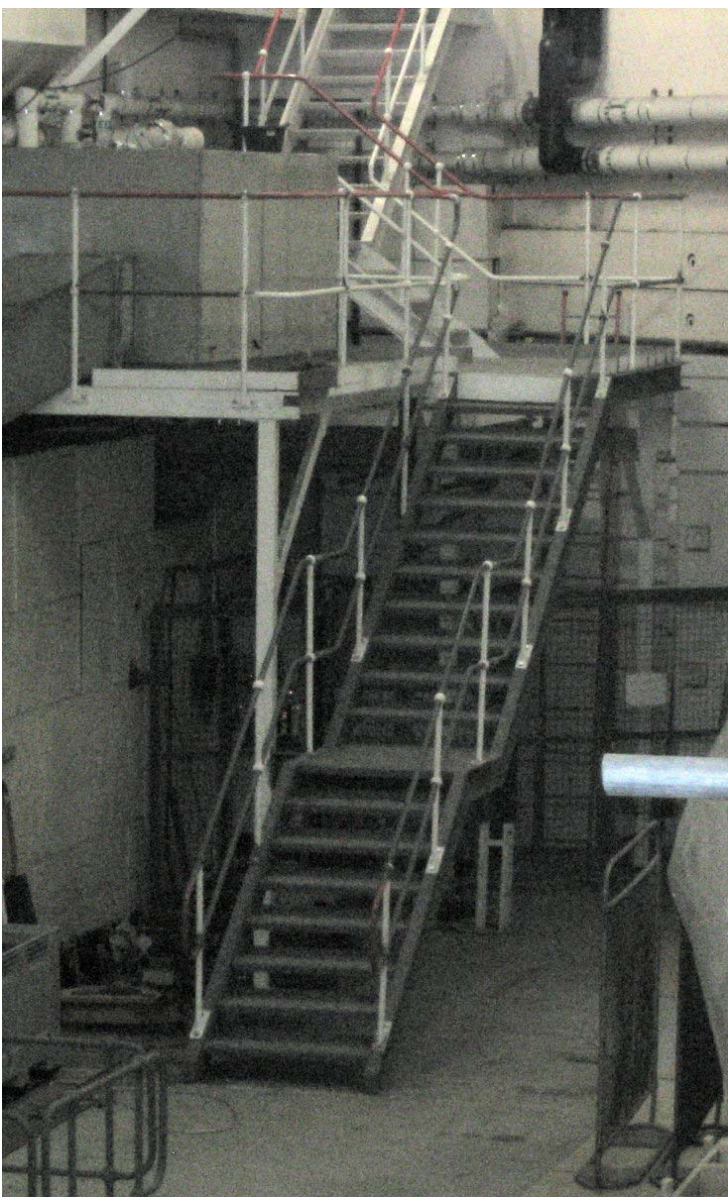


Decay solenoid into MICE Hall













Floor painting preparation







Linde Refrigeration equipment



Linde Refridgeration equipment





Low level holes MICE LCR

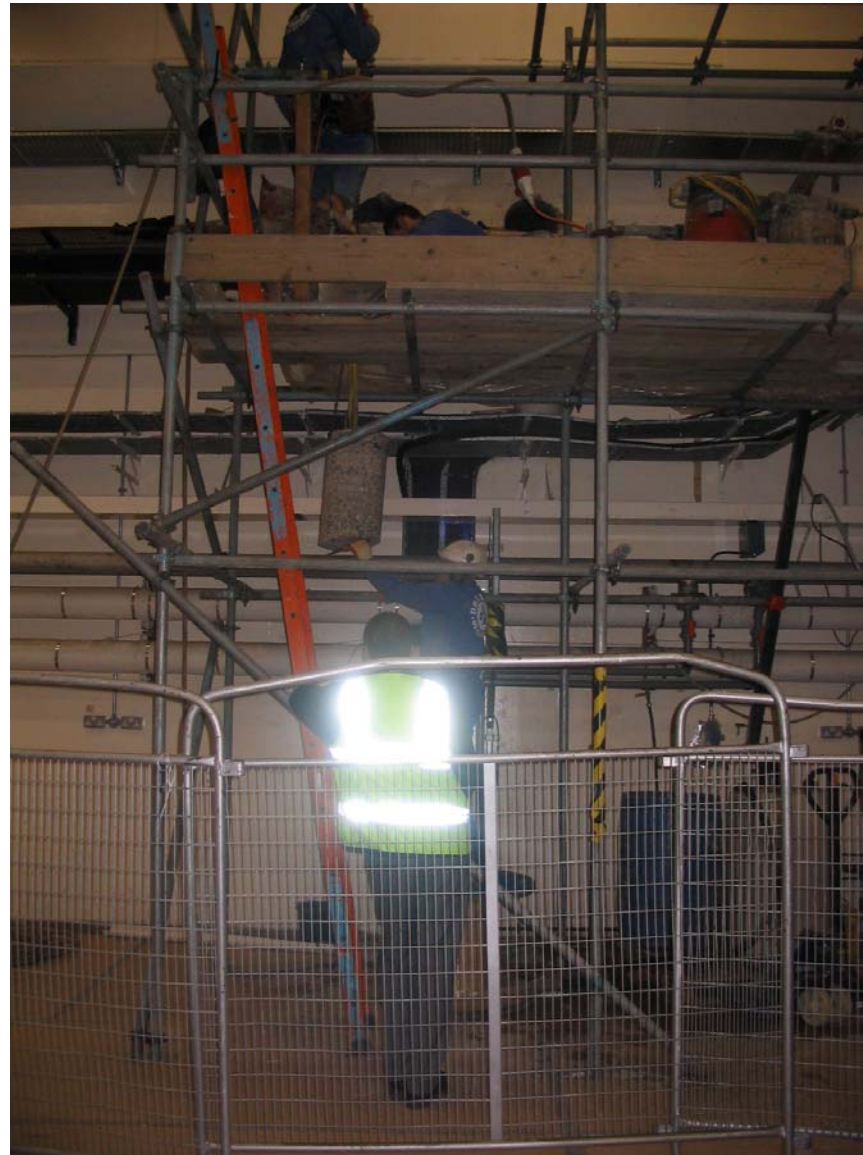




"DANGER"
415 VOLTS



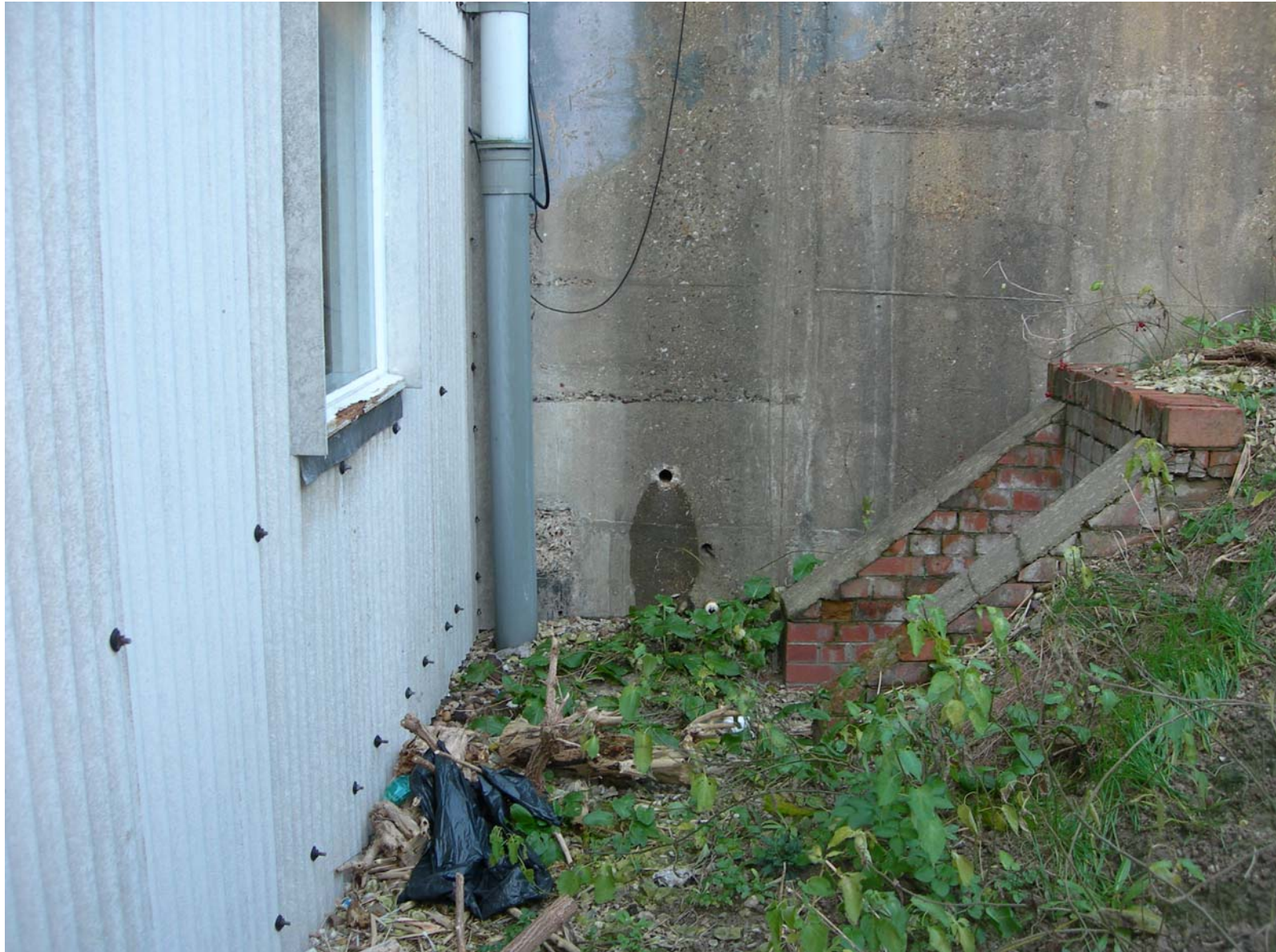
MICE Hole drilling



Mouse-hole droppings



Pilot hole outside



(2) Full-size holes outside

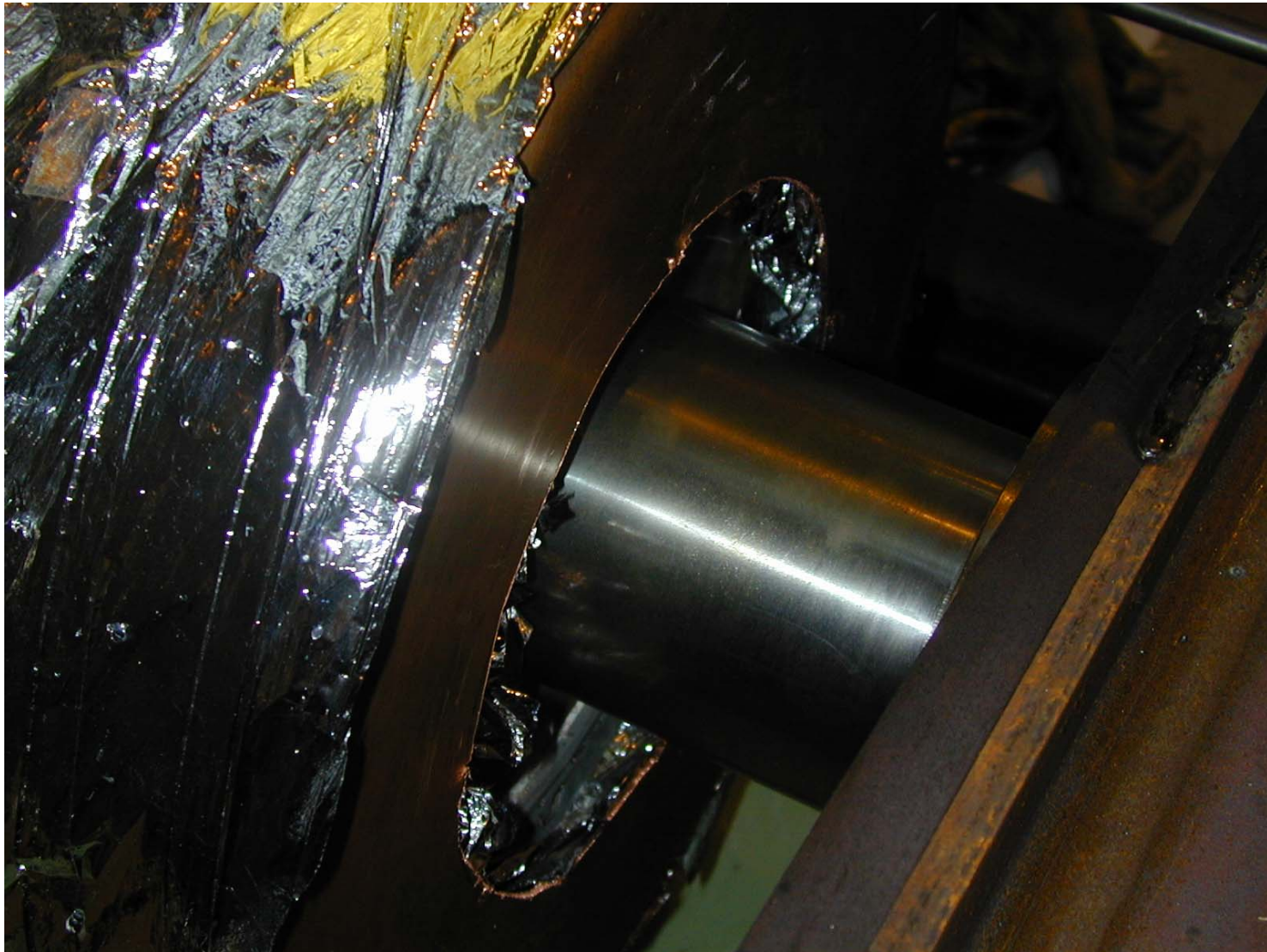


CMS Area cleared





Damage to solenoid at PSI



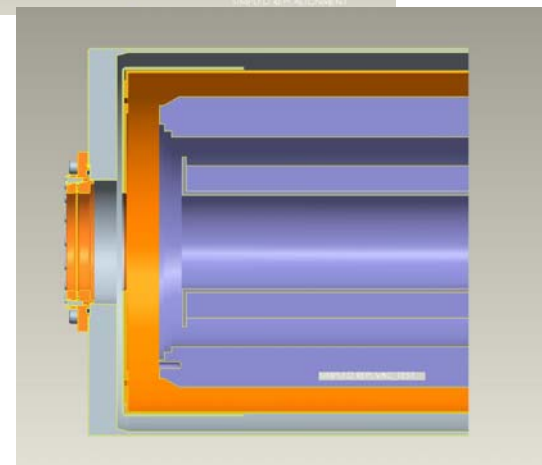
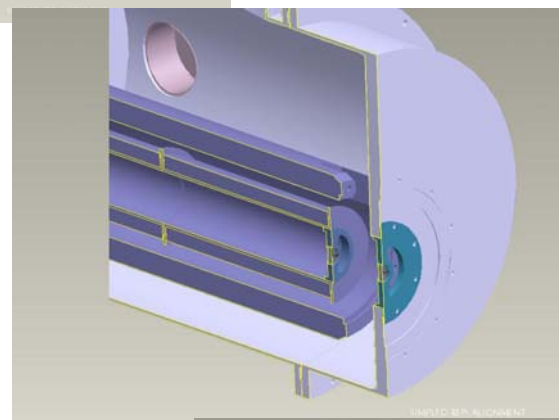
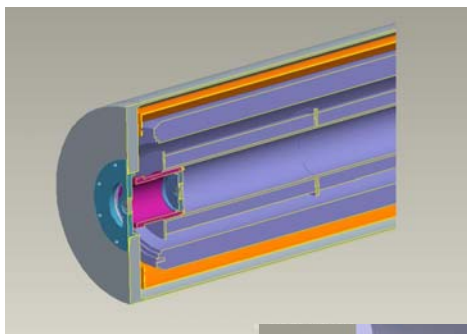
Decay Solenoid repair

Repair needed at active end
~100 $\mu\text{Sv/hr}$

New windows/mounts
designed and manufactured

Targets designed –about to
manufacture

Replacement copper rad
shield designed



Daresbury Electrical section now working on planning electrical services, cable management etc.
Duct cover lifted to check space in duct, conclusion 5-6 inches depth available





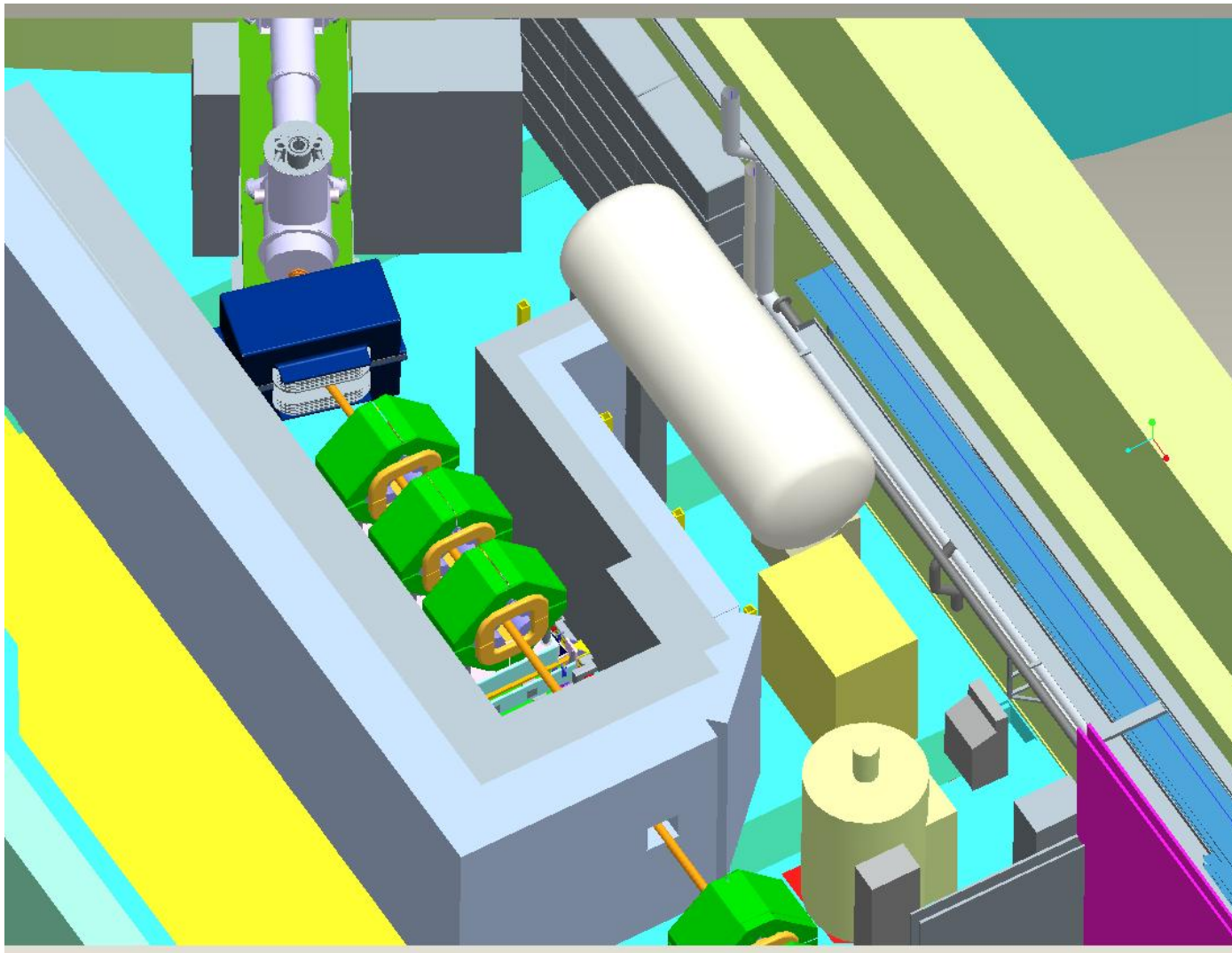
January view of Hall cont...

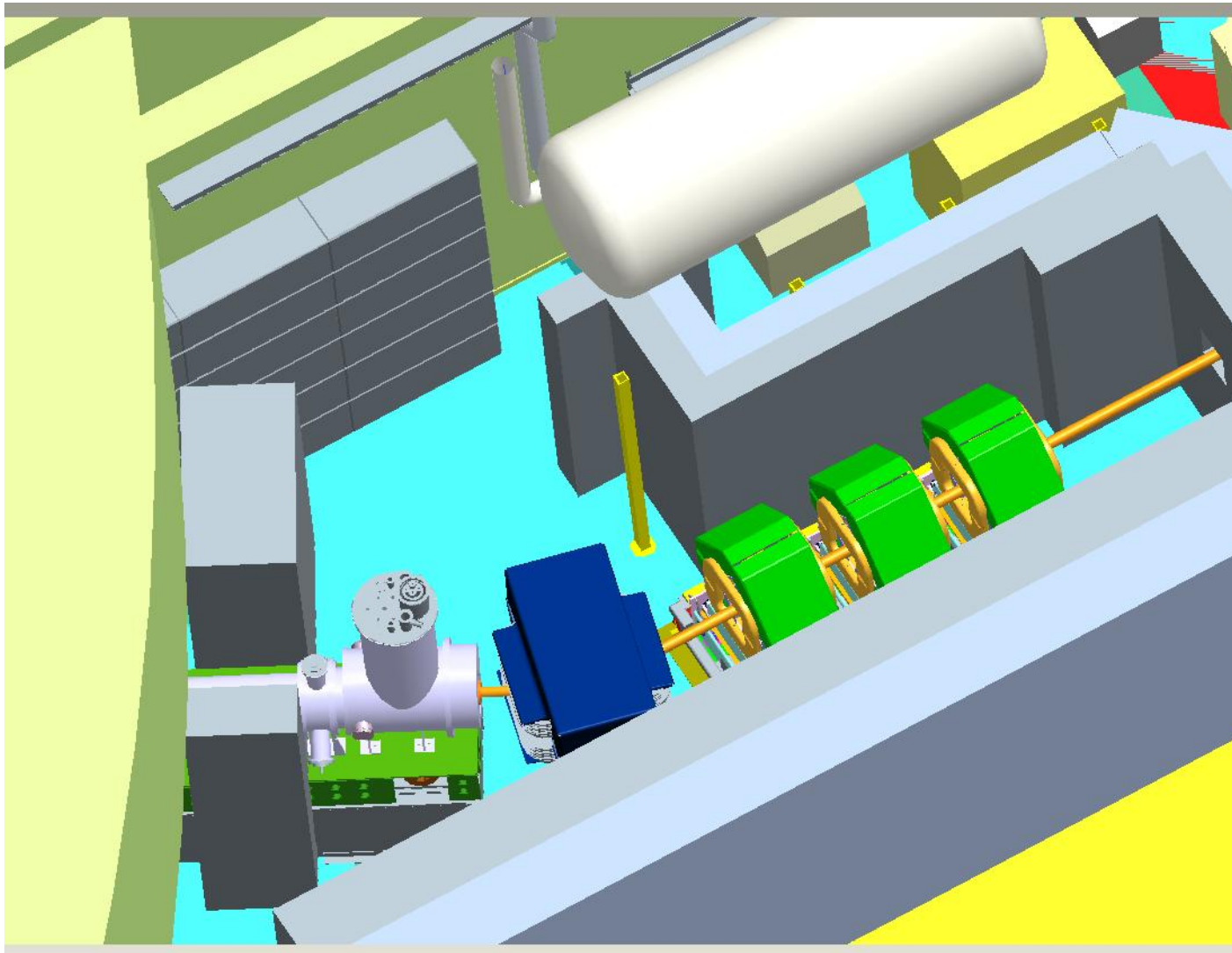


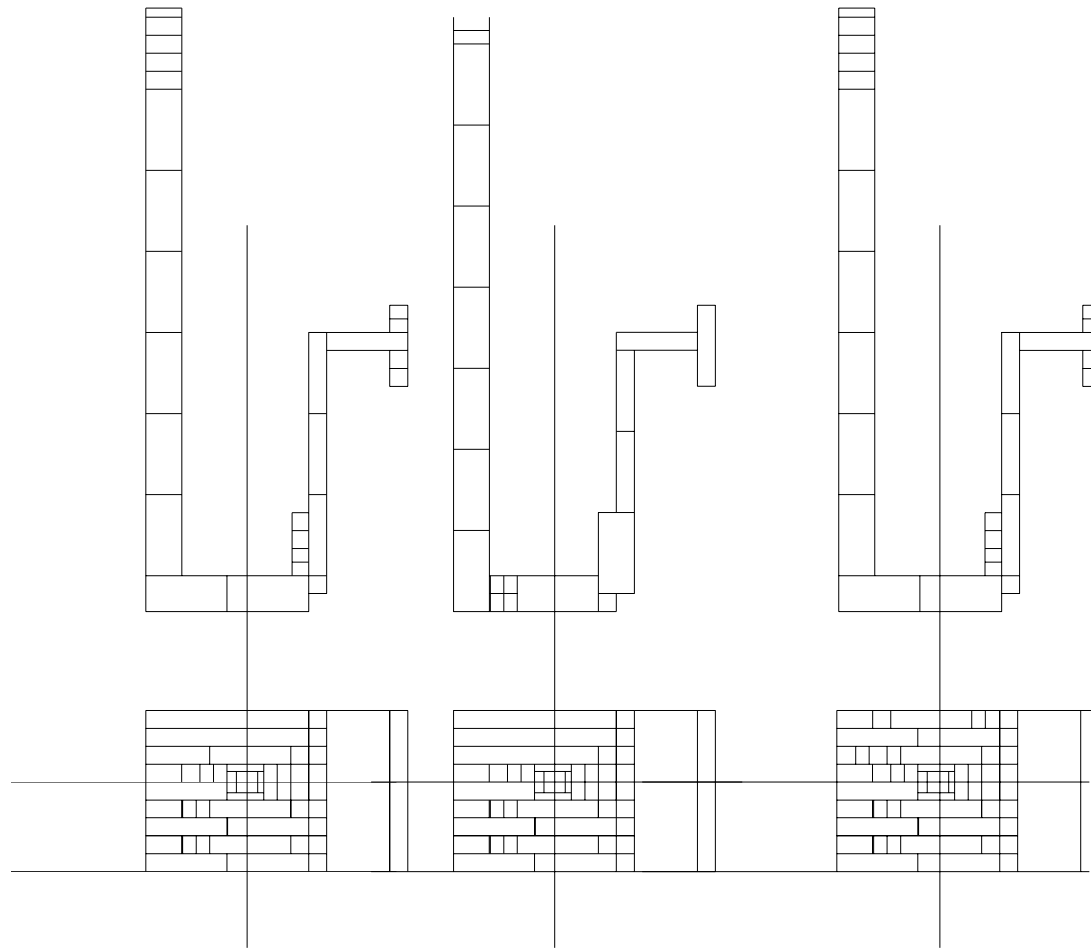


Magnet Coil testing









Steel from Daresbury



Steel at DL



1st 26 tonne load of steel at end of windmill car park

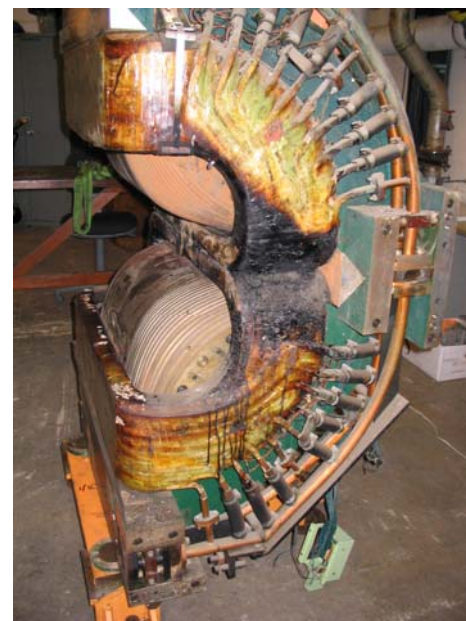


Unloading steel with electromagnet



No comment

Q35 Magnet Refurbishment

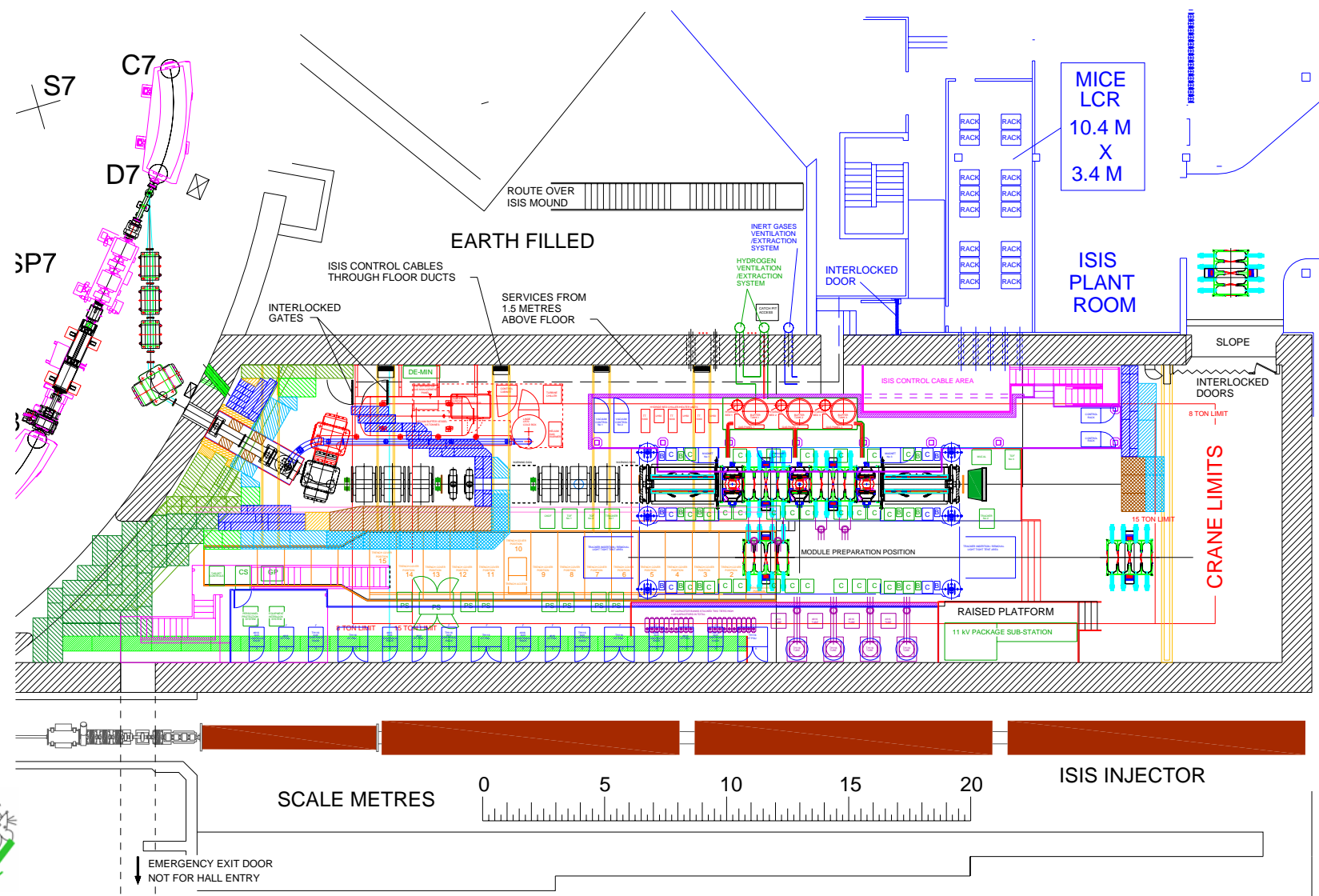




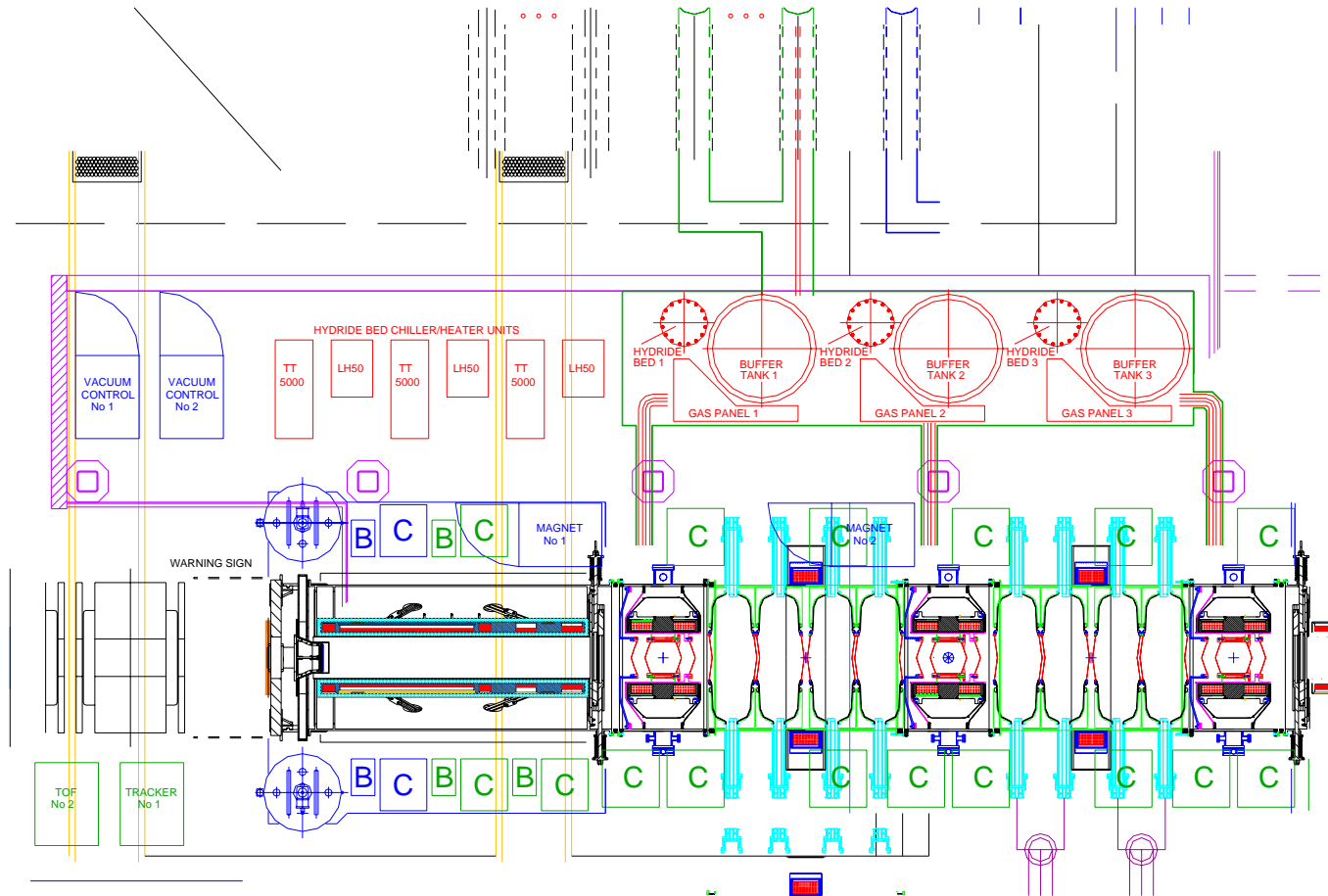
Trench strengthened for shielding blocks sitting partly over it
Better access with fixed angled ladder, and trapdoors



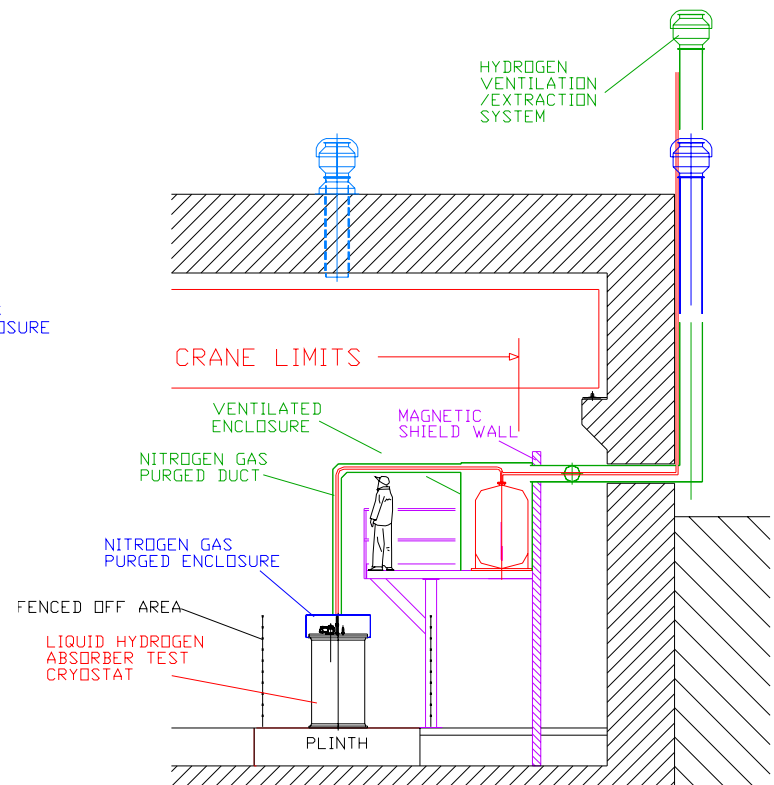
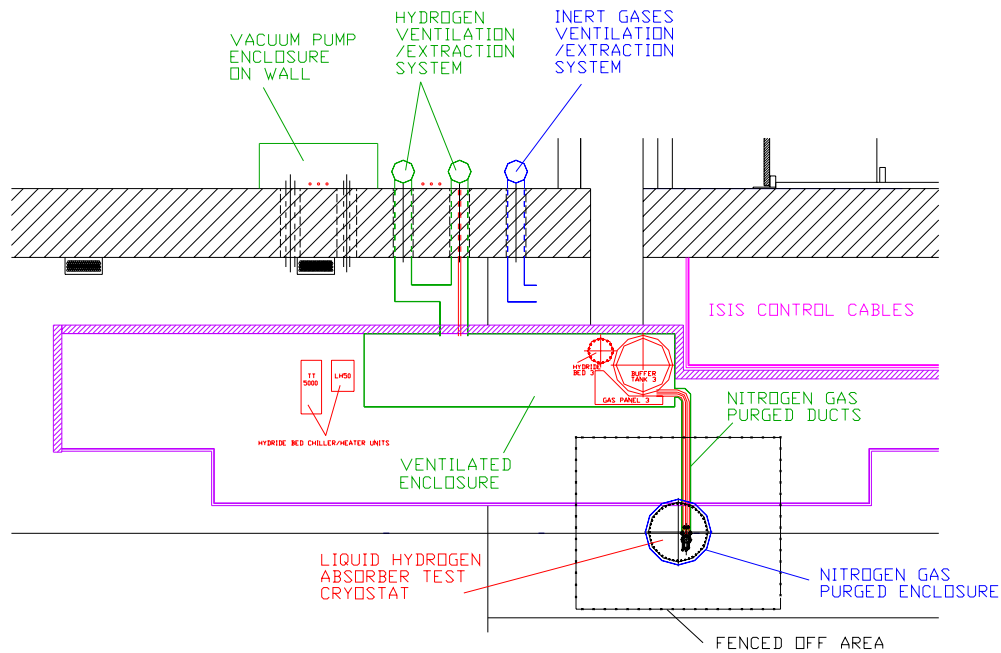
Current Layout complete



Hydrogen Absorber Area



Hydrogen: R & D Area detail





- Upstream shield removal (been waiting 2+ weeks for Heavy gang to start)
 - Trolley cut Monday
 - Active work repair of solenoid

- Steady progress in many disparate areas
- Huge amount to do, with an ambitious schedule
- MICE at RAL are working very hard...
- Thankyou