

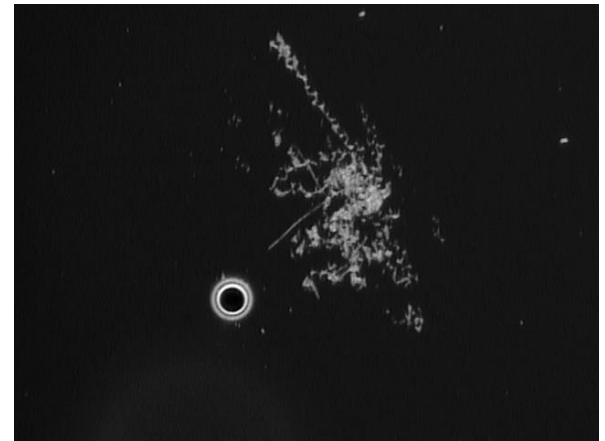
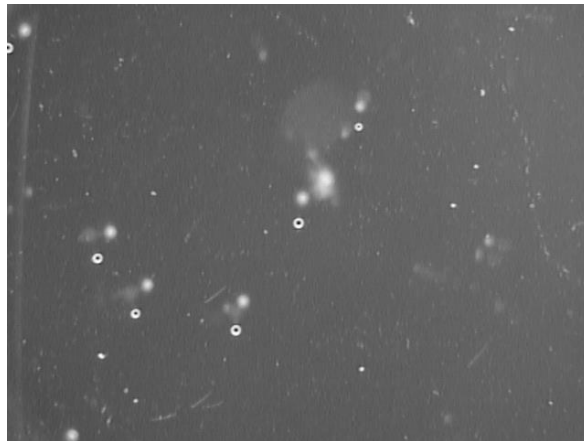
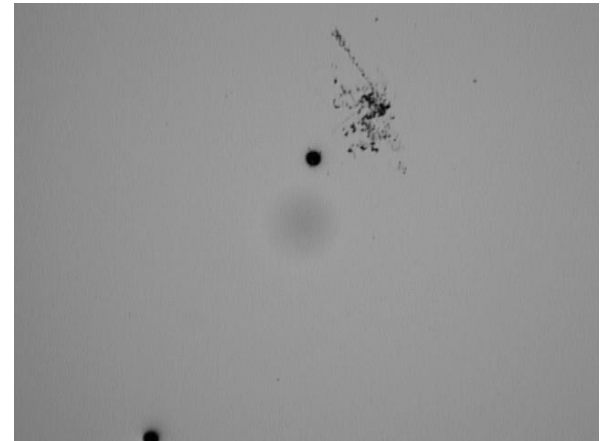


QM Update

Lewis Millward
l.millward@qmul.ac.uk

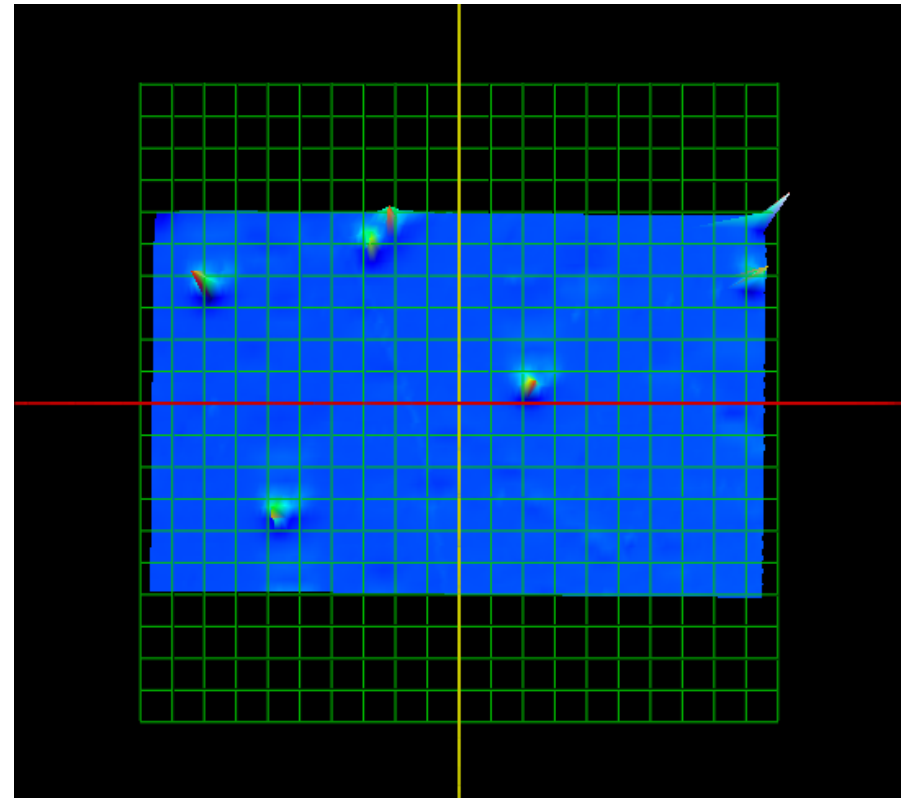
CR39 // Zoom, F/B, Halo ligh

CR 39 imaged over different zoom levels, front + back focal plane imaging, different lighting configurations (intensity, through lens, backlighting, halo around lens)



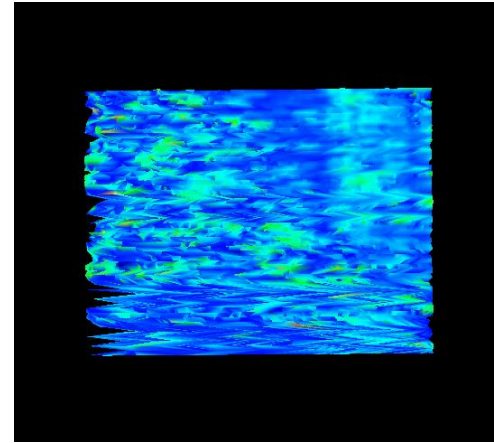
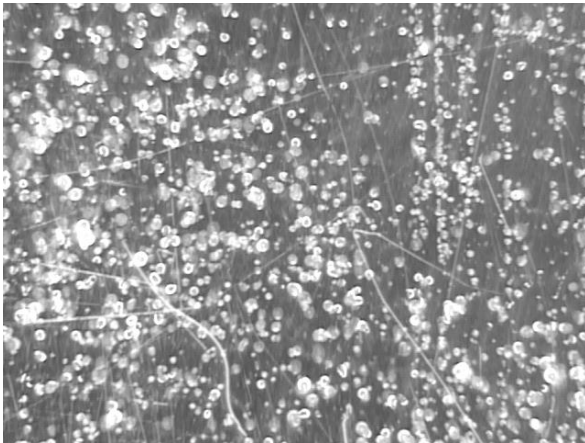
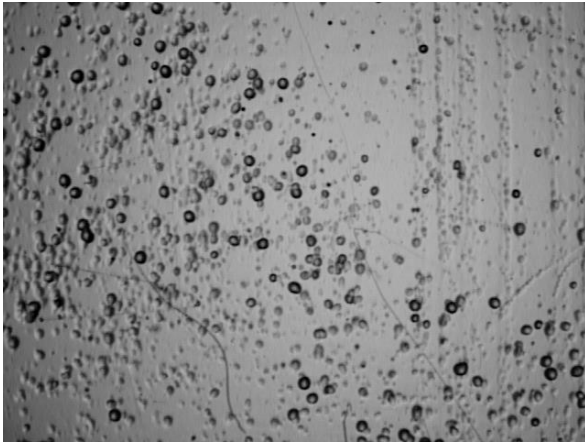
Laser Scanning // CR39

- Laser moves inertially sweeping in given direction (eg, x)
- Time sampling
- Not limited to imaging /size/shape
Could scale up to scanning over whole sample



* Havent forgotten spatial resolution question.
Nominal ~ microns, desired spatial res – adjustable
but this use case is not what eqpt. Was designed for

Makrofol

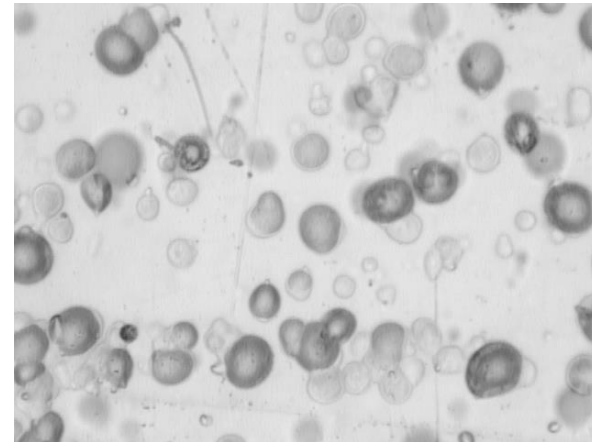


- Halo lighting effect doesn't improve much
- Nor does Laser
Need to calibrate / tune differently for Makrofol

Could use more samples at Queen Mary



- Xenon exposed CR339
- No background
- Not quite representative
- Could be useful for transfer learning



- Makrofol
- Exact Provedence?
- More realistic background. But excessive
- How to turth label?