

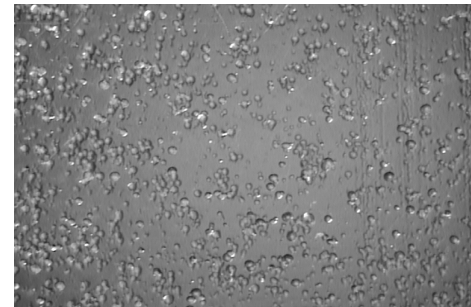
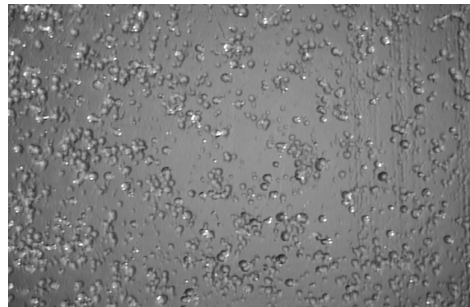
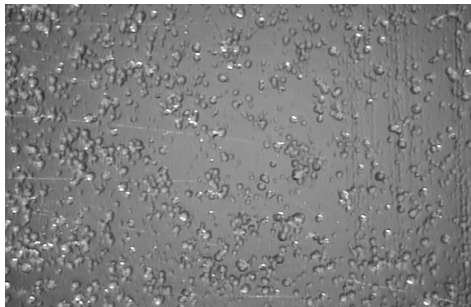


Moedal Update - 13Aug

LMillward

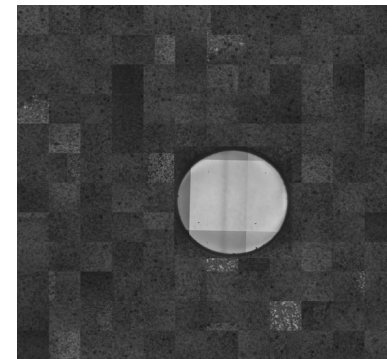
Data Collection

- Found work-around for collecting multi-config images across entire x-y plane.
- Have 4gb+, [440 images] X [10 channels]
8 fresnel + Halo + backlighting
- Can repeat at different configuration if required



Machine learning

- TensorFlow Input pipeline using old, resampled images as template
- Updated to use TF.dataset, and associated methods
- Data organising script
- Dataset generator, + labelling
- CNN
- Run, Train, Test




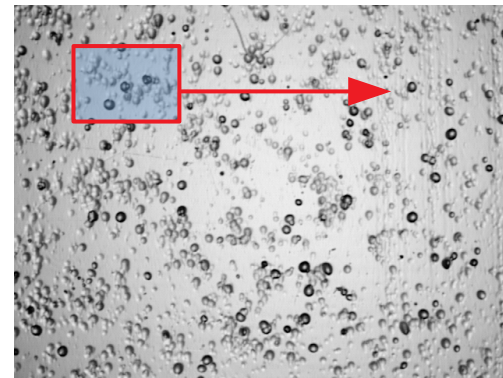
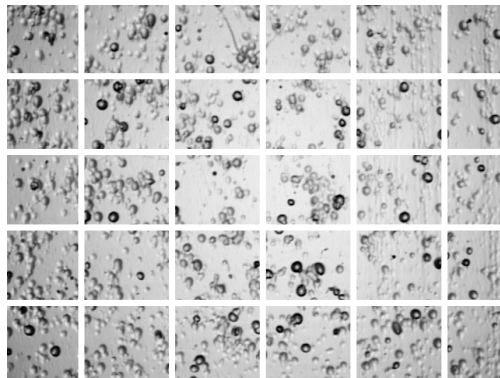


ML with new data

- Need 'target'
- Are we classifying, position regression,....
- Need labeled data;
 - Possible with 10 channel data
 - Not possible with 1 channel data

ML : Input - x

- Region of interest is approx 28x28  ie, MNIST sized. Good starting-Point
- A: Split image, eg Hipster – Patches, OR
- B: Run modular CNN over whole image



ML : Target + labels

- Can create GiFs from the 10 channel data
- Use to ID / label candidates
- Some images not suitable, eg surface scratches, too many holes
-
- Focus on features
- Eg, Count holes
- Identify light holes and dark holes