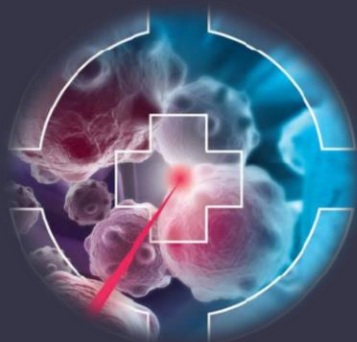


OMA 3rd Topical Workshop

Accelerator Design and Diagnostics

10th - 12th December 2018, GSI, Germany



VENUE

The workshop will take place at GSI: KPW Auditorium
GSI Helmholtzzentrum für Schwerionenforschung GmbH
Planckstraße 1
64291 Darmstadt
Germany

Full Details

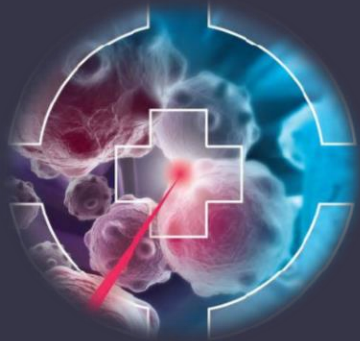
Full details available at: <https://indico.cern.ch/event/744722/>

Wifi Access

Will be provided for each participant upon registration.

This project has received funding from the European Union's Horizon 2020 research and innovation programme under the Marie Skłodowska-Curie grant agreement No 675265.





OMA 3rd Topical Workshop

Accelerator Design and Diagnostics

10th-12th December 2018 , GSI, Germany



CAMPUS MAP

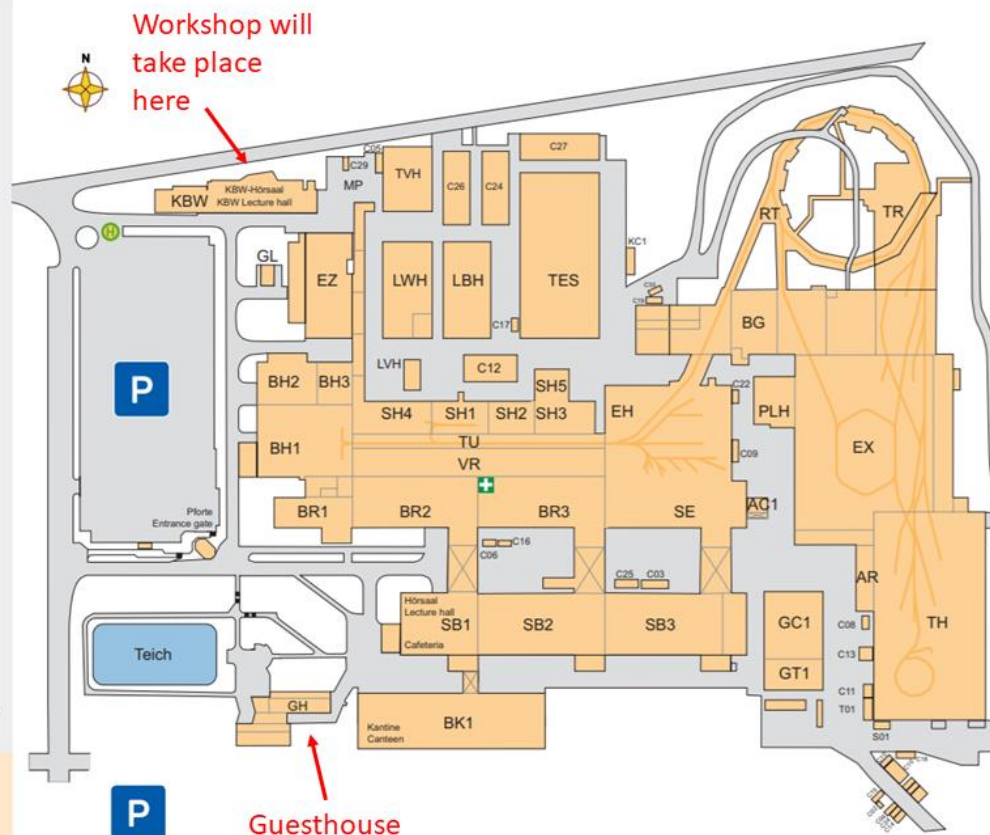
FAIR
GSI

AR	Annex-Radiologie
AC	Annex Container
BG	Betriebsgebäude
BH	Betriebshalle
BK	Büro- & Kantinegebäude
BR	Betriebsräume
C	Container
EH	Experimentierhalle
EX	Neue Experimentierhalle
EZ	Energiezentrale
GC	Green IT Cube
GH	Gästehaus
GL	Gefahstofflager
GT	Green IT Technikgebäude
KBW	Konferenz- und Bürogebäude West
LBH	Leichtbauhalle
LVH	Lager- und Vorfertigungshalle
LWH	Lager- und Werkstatthalle
MP	Wertstoffhof, Müllpresse
PLH	Phelix
RT	Ringtunnel
SB	Südbau
SE	Schnelle Experimente
SH	Stripperhalle
TES	Testinghalle
TH	Targethalle
TR	Transferhalle
TU	Tunnel
TVH	Tankverkupferungshalle
VR	Versorgungsräume

Sanitätsraum/First Aid Ward

Im Notfall bitte die Pforte kontaktieren.
In case of emergency, please contact the entrance gate.
Telefon/Phone: +49 6159 71 2210

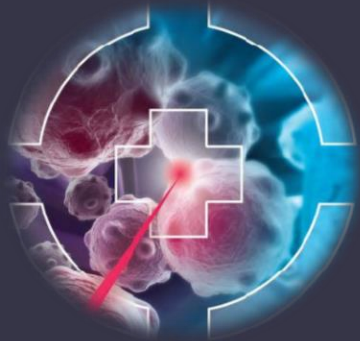
Ortsbezeichnung/Room numbering:
Beispiel/Example: SB2.4.123
SB2. Gebäude/Building
4. Ebene/Level
123 Raumnummer/Room number



OMA 3rd Topical Workshop

Accelerator Design and Diagnostics

10th-12th December 2018 , GSI, Germany



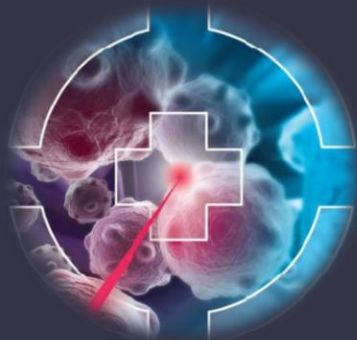
OVERVIEW

Monday 10/12/18	Tuesday 11/12/18	Wednesday 12/12/18
Room: KBW - Auditorium 19:00 - 21:00 Welcome Reception	Room: KBW - Auditorium 9:00 – 12:30 Talks and Discussion 12:30 – 14:00 Lunch, Canteen 14:00 – 17:00 Talks and Discussion 19:30 Conference Dinner (Guesthouse Foyer)	Room: KBW - Auditorium 9:00 – 12:45 Talks and Discussion 12:45 – 14:00 Lunch, Canteen <i>End of Workshop</i>

OMA 3rd Topical Workshop

Accelerator Design and Diagnostics

10th-12th December 2018, GSI, Germany



ACCOMMODATION

Upon arrival, please pick up your keys at the GSI front gate, before walking to your lodging facilities.

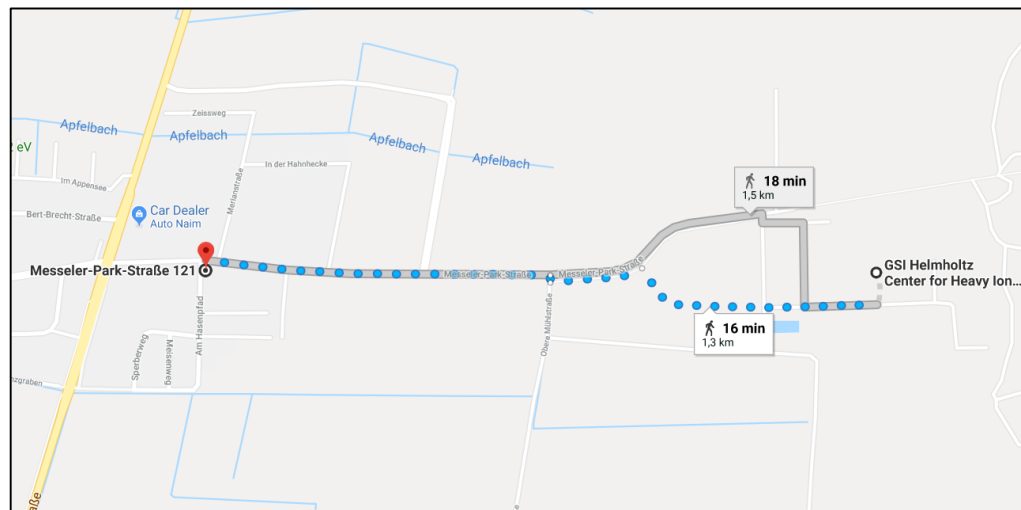
Please note: *The last Bus G from Wixhausen to GSI runs at 19:30. If you arrive later, you will have to travel by foot from Wixhausen Station to the GSI front gate*

Single Accommodation

Workshop participants who are staying in single rooms will stay at the **GSI Guesthaus (On Campus Map)**

Double Accommodation

Workshop participants staying in double rooms will stay at the **GSI Steinhaus (Messeler-Park-Strasse 121, 15 min walking to GSI).**



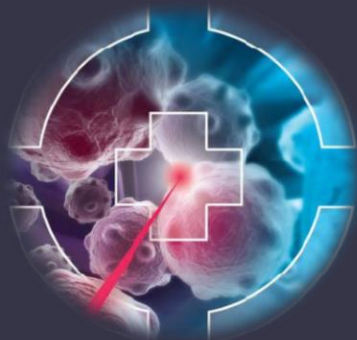
This project has received funding from the European Union's Horizon 2020 research and innovation programme under the Marie Skłodowska-Curie grant agreement No 675265.



OMA 3rd Topical Workshop

Accelerator Design and Diagnostics

10th - 12th December 2018, GSI, Germany



TRAVEL

For details on travel to GSI: <https://www.gsi.de/en/topmenu/an>

From Frankfurt Main Station:

Take S-Bahn (regional train) S3 with direction Darmstadt

Get off at Wixhausen (15 stops)

Use bus route G with direction GSI. Bus starts from bus stop Bahnhof, which is located on the other side of the rails, use the underground crossing.



We look forward to welcoming you to the OMA Workshop!

In case of an emergency:
Samantha +44 077919 41666