



Workshop

An engineering perspective on risk assessment: from theory to practice

CERN (Geneva, Switzerland)

26-27 November 2018



Contact:

Giordana Gai – Giordana.Gai@cern.ch

Jodie Ridewood – Jodie.Ridewood@cern.ch

<https://indico.cern.ch/e/RiskAssessmentWorkshop>



Emergency Procedure of Bd. 80 - Globe



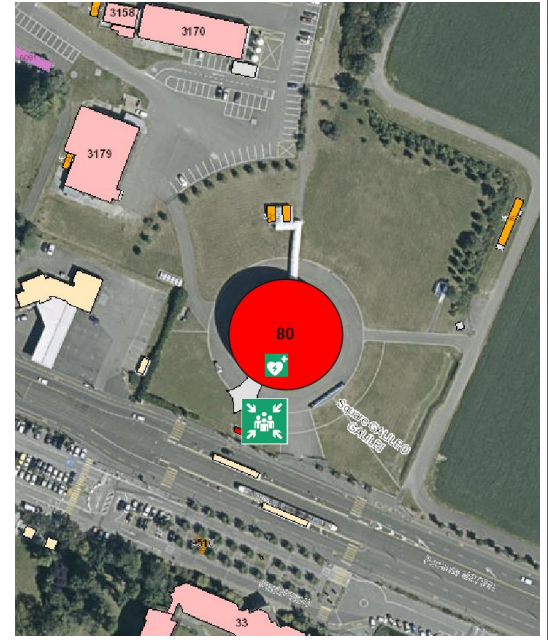
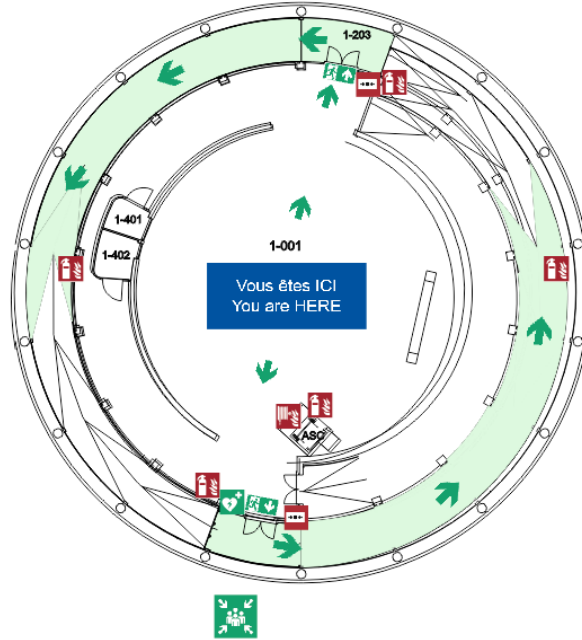
If the alarm rings



Stop your activity



Evacuate following the signs



Do not use the lift



Go to the assembly point



Wait for the Fire Brigade

The program at a glance

SESSION I: Fundamental concepts of risk assessment and management <i>Dr Jose G. Rangel-Ramirez, Marco Andreini</i>	
80-1-001 - <i>Globe of Science and Innovation - 1st Floor, CERN</i>	09:20 - 10:40
BREAKS: Coffee break	
80-1-001 - <i>Globe of Science and Innovation - 1st Floor, CERN</i>	10:40 - 11:10
SESSION II: The role of fire modelling in risk assessment <i>Dr Emanuele Gissi, Oriol Rios</i>	
80-1-001 - <i>Globe of Science and Innovation - 1st Floor, CERN</i>	11:10 - 12:30
BREAKS: Lunch time	
80-1-001 - <i>Globe of Science and Innovation - 1st Floor, CERN</i>	12:30 - 14:00

Morning

SESSION III: Practical applications of risk assessment in process safety <i>Art Arnalich, Ms Helen Boyer</i>	
80-1-001 - <i>Globe of Science and Innovation - 1st Floor, CERN</i>	14:00 - 15:20
BREAKS: Coffee break	
80-1-001 - <i>Globe of Science and Innovation - 1st Floor, CERN</i>	15:20 - 15:50
SESSION IV: Cost effectiveness and damage estimation in risk assessment <i>Giordana Gai, Simon Marsh</i>	
80-1-001 - <i>Globe of Science and Innovation - 1st Floor, CERN</i>	15:50 - 17:10
ROUND TABLE: Wrap-up of the day	
80-1-001 - <i>Globe of Science and Innovation - 1st Floor, CERN</i>	17:10 - 17:50
BREAKS: Networking Cocktail	
80-1-001 - <i>Globe of Science and Innovation - 1st Floor, CERN</i>	17:50 - 18:50

Afternoon



www.cern.ch