


TRD run summary

BD

16.08.2018

LHC schedule

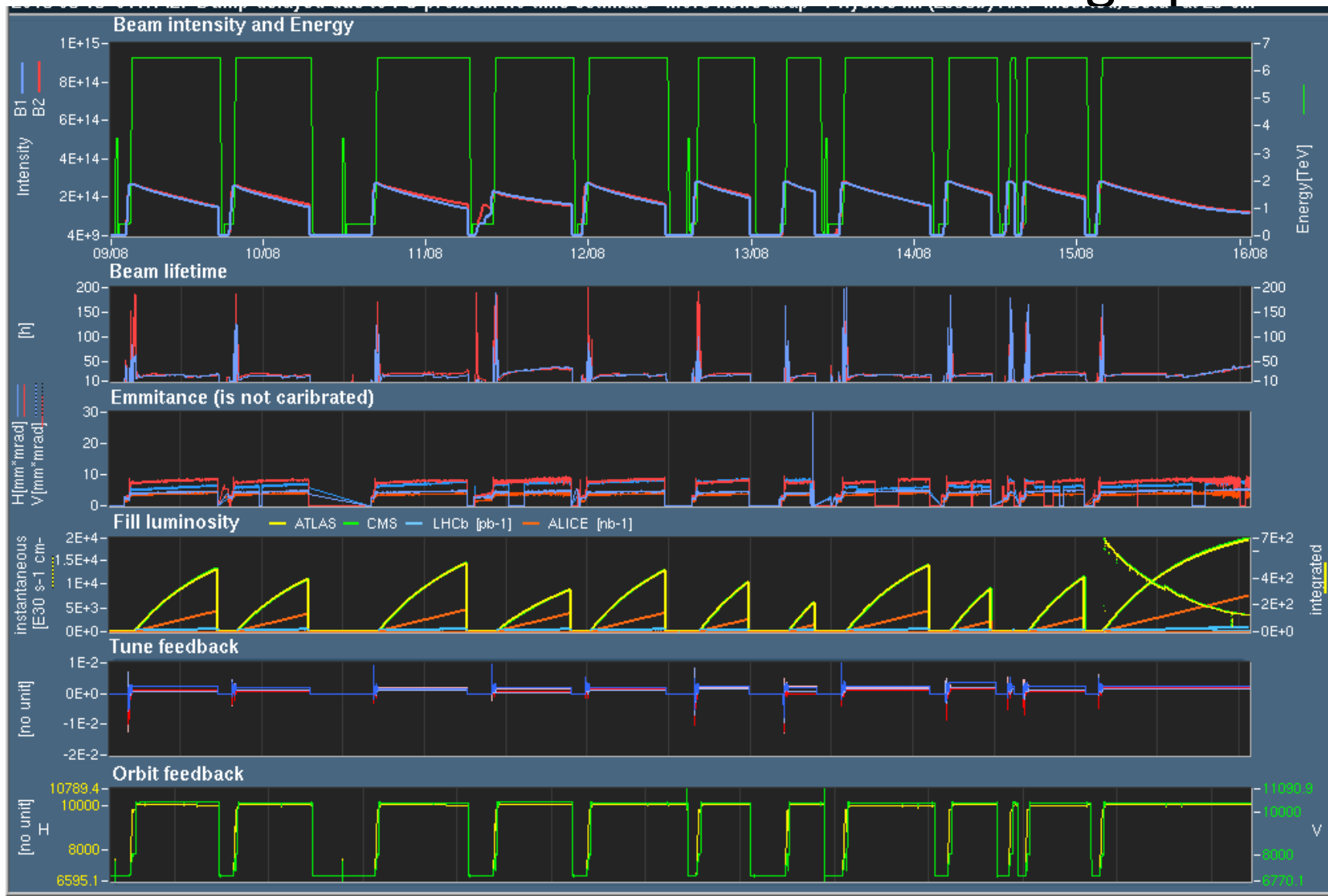
- Technical stop 2 might be shorted from five to three days

	July			Aug					Sep				
Wk	27	28	29	30	31	32	33	34	35	36	37	38	39
Mo	$\beta^* = 90 \text{ m}^2$	9	16	23	30	6	13	20	27	3	10	17	24
Tu	run												
We				MD 2								TS2	
Th										Jeune G.			
Fr											MD 3		
Sa													
Su													

- Run2 Pb-Pb equivalent test will be in the mini-week (starting August 27)
- Run3 PbPb equivalent test remains scheduled for the week before the MD (the week starting September 3)

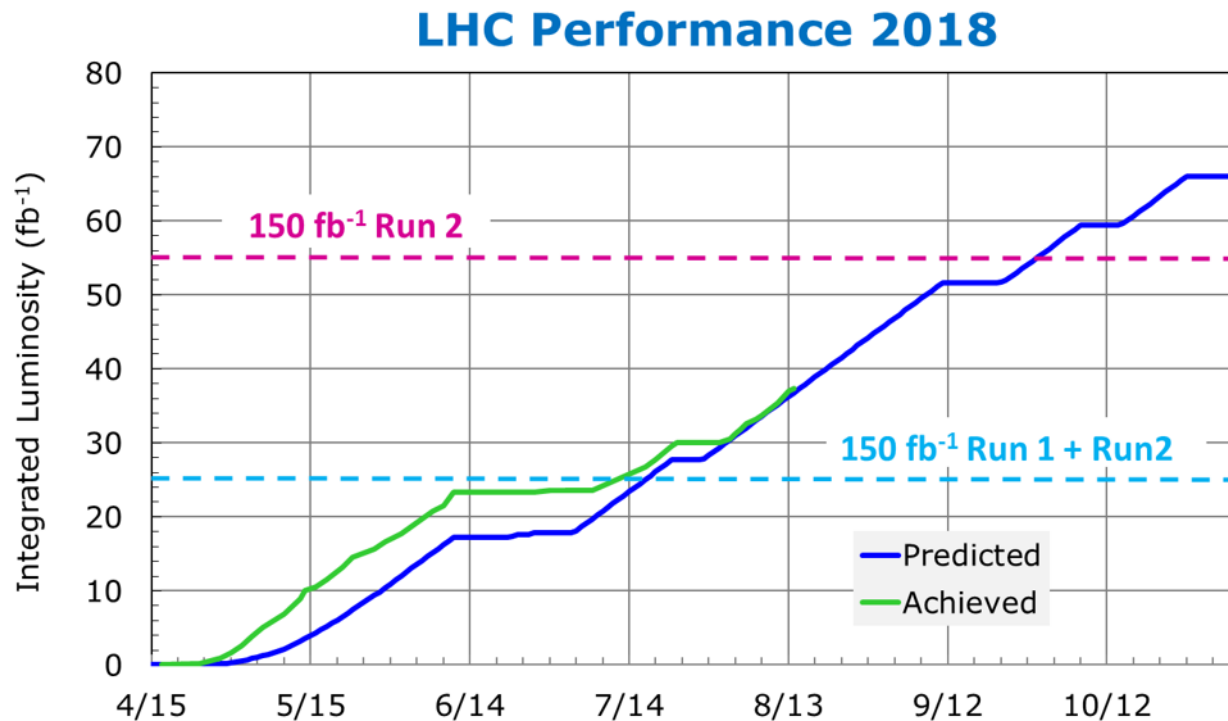
Run summary

- LHC has still some issues but is catching up



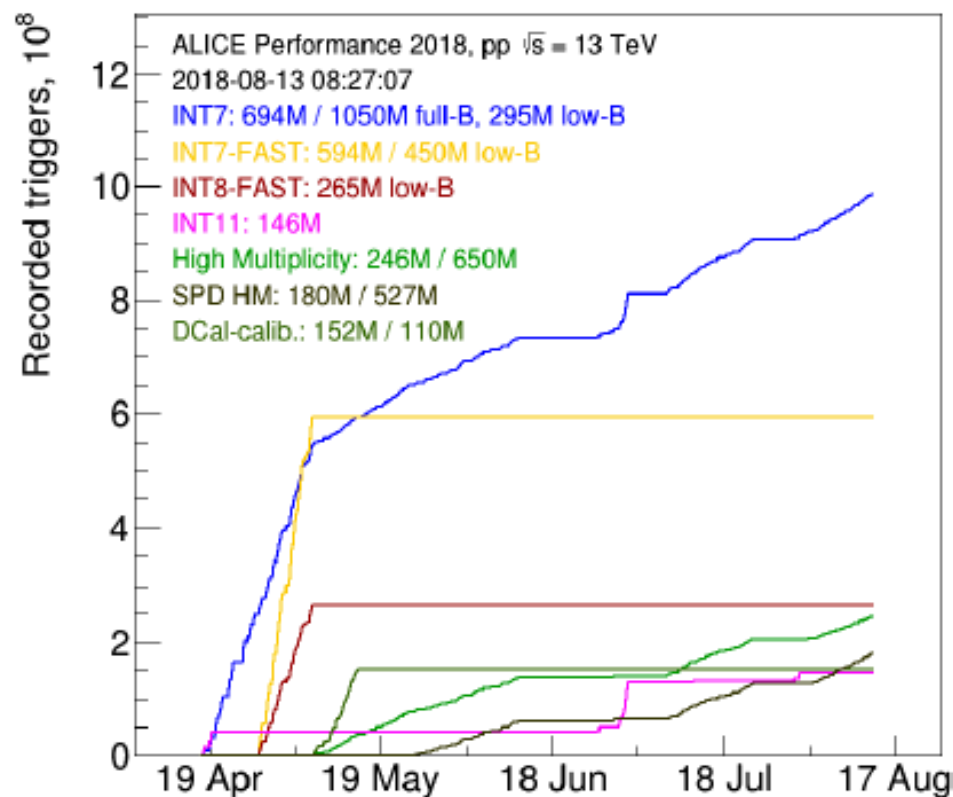
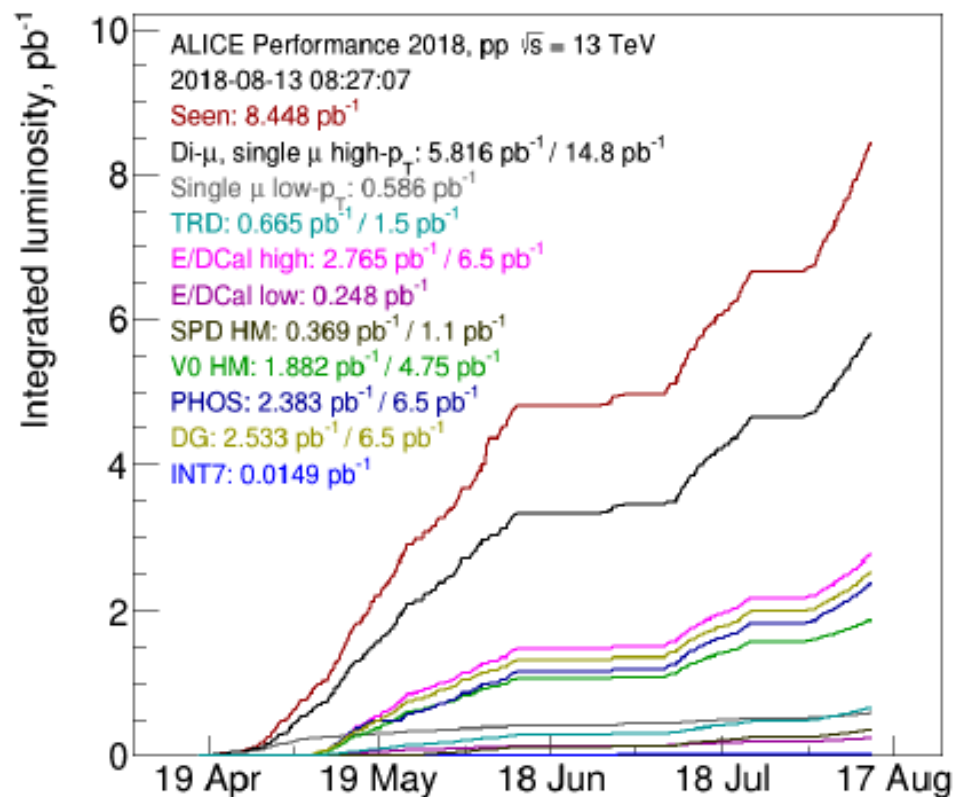
Run summary

- LHC has still some issues but is catching up



Luminosity

- TRD triggers seem to hardly make the expected value



TRD issues

- 10.08.2018 TRD HV was not ramped automatically to SuperSafe
 - Issue with the handshake from DCS side, so the injection state was not properly published and received → after solving the issue from central DCS side everything smooth again
- 12.08.2018 PTSS off, gtucfgtoold crashed
 - DCS board of sector 2 of the GTU was powercycled
 - PTSS off solved by powercycle (remote switching off/on) of wie096
- 12.08.2018 Issues with FED config while B field was off
 - Magnet transition needs a reconfiguration of the TRD
- 14./15.08.2018 GTU went to ERROR once at EOR and once at SOR
 - DIM scripts were not running on wn004 and DCS board to power PC communication failed, solved by powercycle
 - SOR script failed, solved by RECOVER → INITIALIZE → CONFIGURE

TRD issues

- 15.08.2018 TRD went to MIXED while the configuration to cosmics
 - One chamber was stuck in sequence 0 and pretrigger system was not properly configured for cosmics

Miscellaneous

- Shifts have been booked for the full August
- Switch replacement needs an IMPACT (possibly done in TS2)
- Monitor behaviour of wie096 (check for possible replacement)