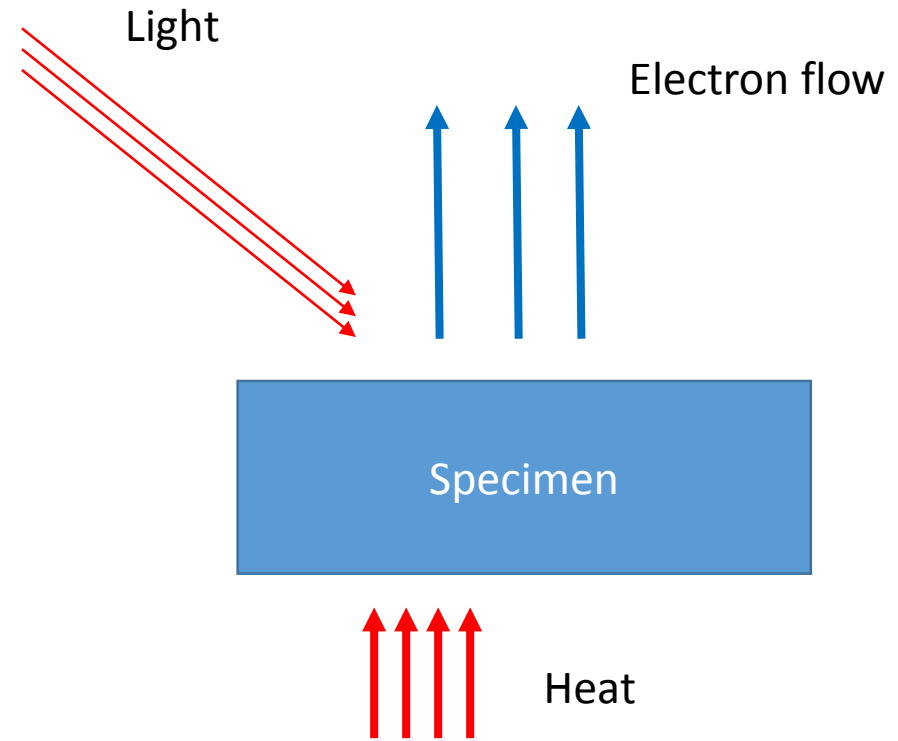
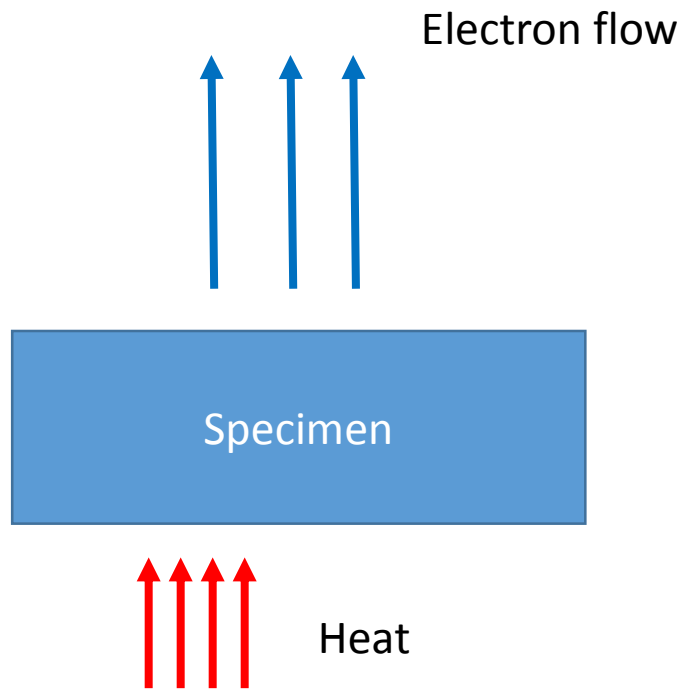


Exoelectron emission



Status on 31.08.2018

Measured and processed:

L8 (Christian's samples)

L16

L20

L21

C10

Measured

L1 (Michael's samples)

L9

L10

L23

C1

Not measured

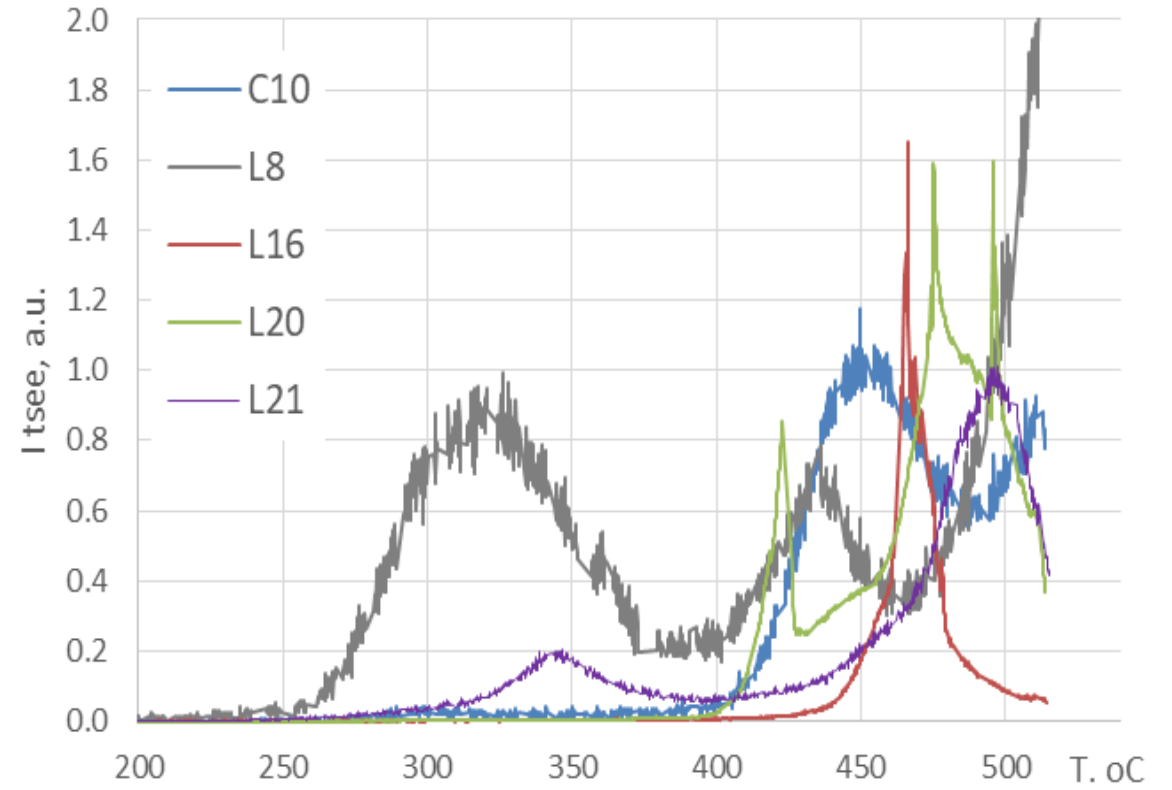
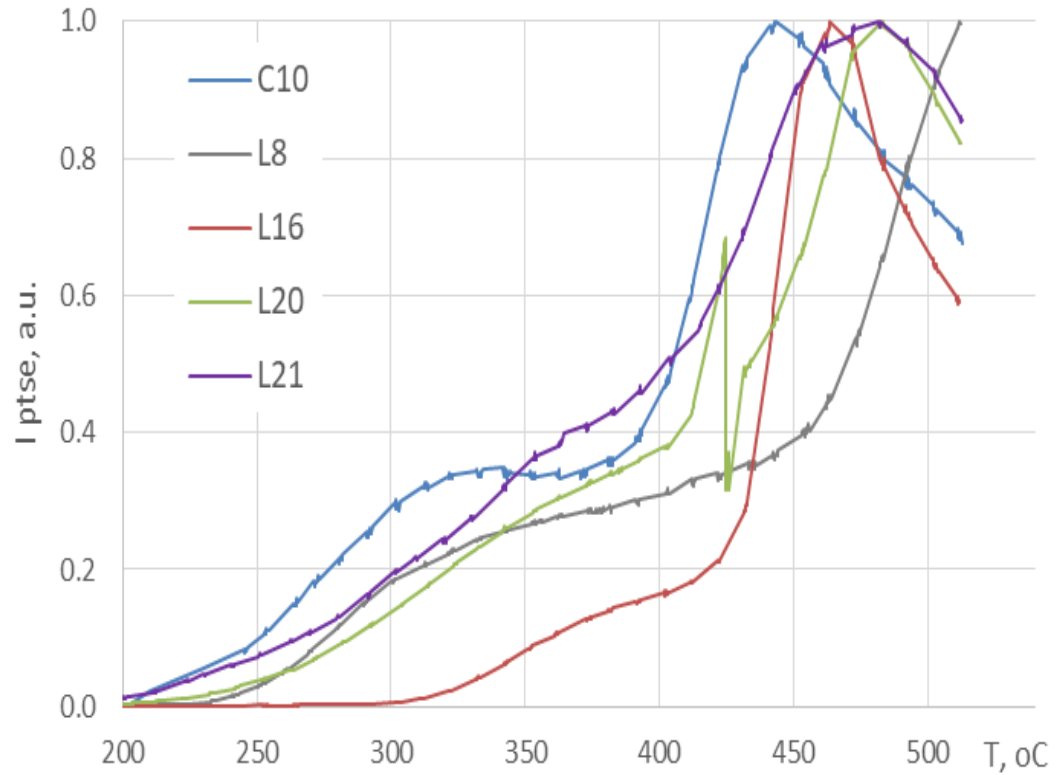
L13 (Reza's samples)

L18

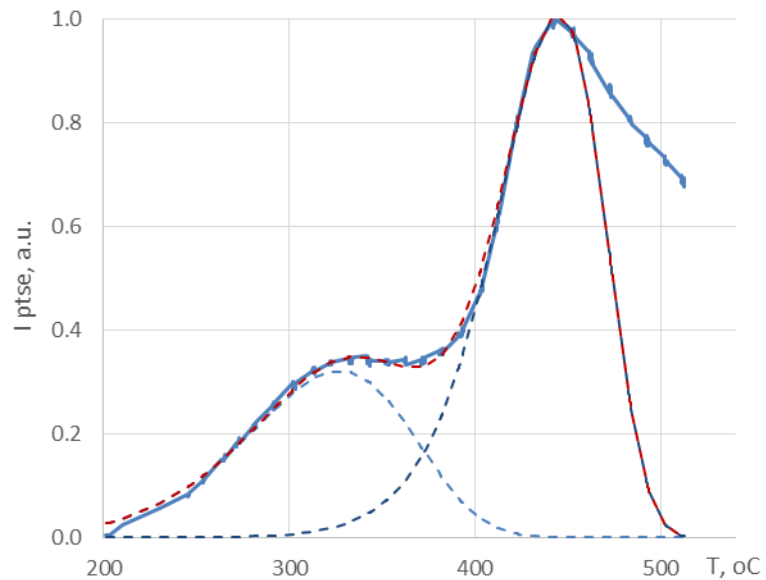
L19

C7

PTSE (left) and TSEE (right) spectra of Nb film on Cu

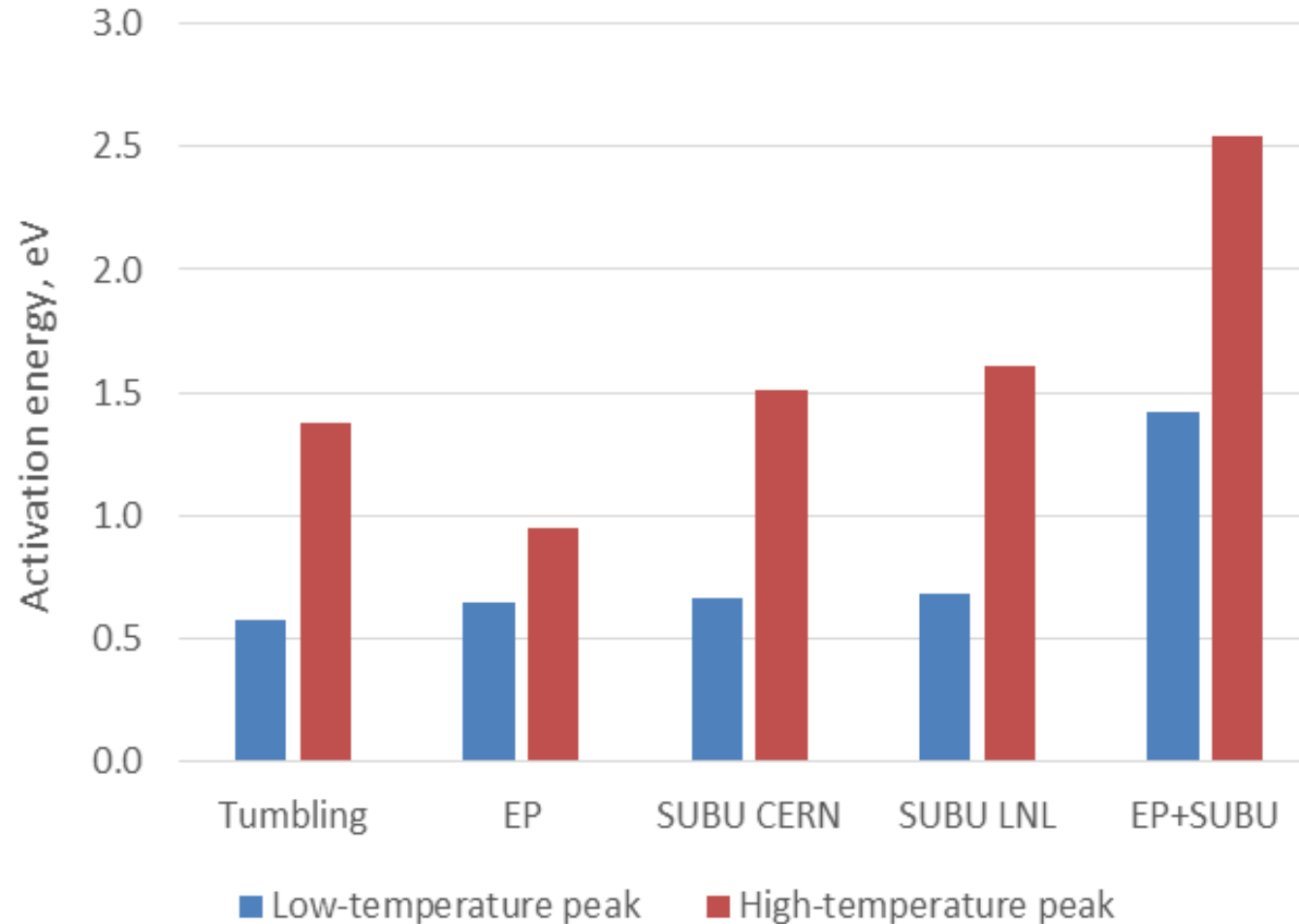


Peak deconvolution



Spec.	PTSE				TSEE	
	Low-temperature peak		High-temperature peak		Low-T peak	High-T peak
	T_{\max} , °C	E, eV	T_{\max} , °C	E, eV	T_{\max} , °C	T_{\max} , °C
C10	320	0.67	450	1.51	310	450
L8	362	0.58	> 500	1.38	320	425
L16	375	1.42	460	2.54	-	470
L20	370	0.68	490	1.61	425	490
L21	342	0.65	480	0.95	347	500

Activation energies for low temperature and high temperature annealing for different CU substrate preparation technologies



Correlation roughness- activation energy

