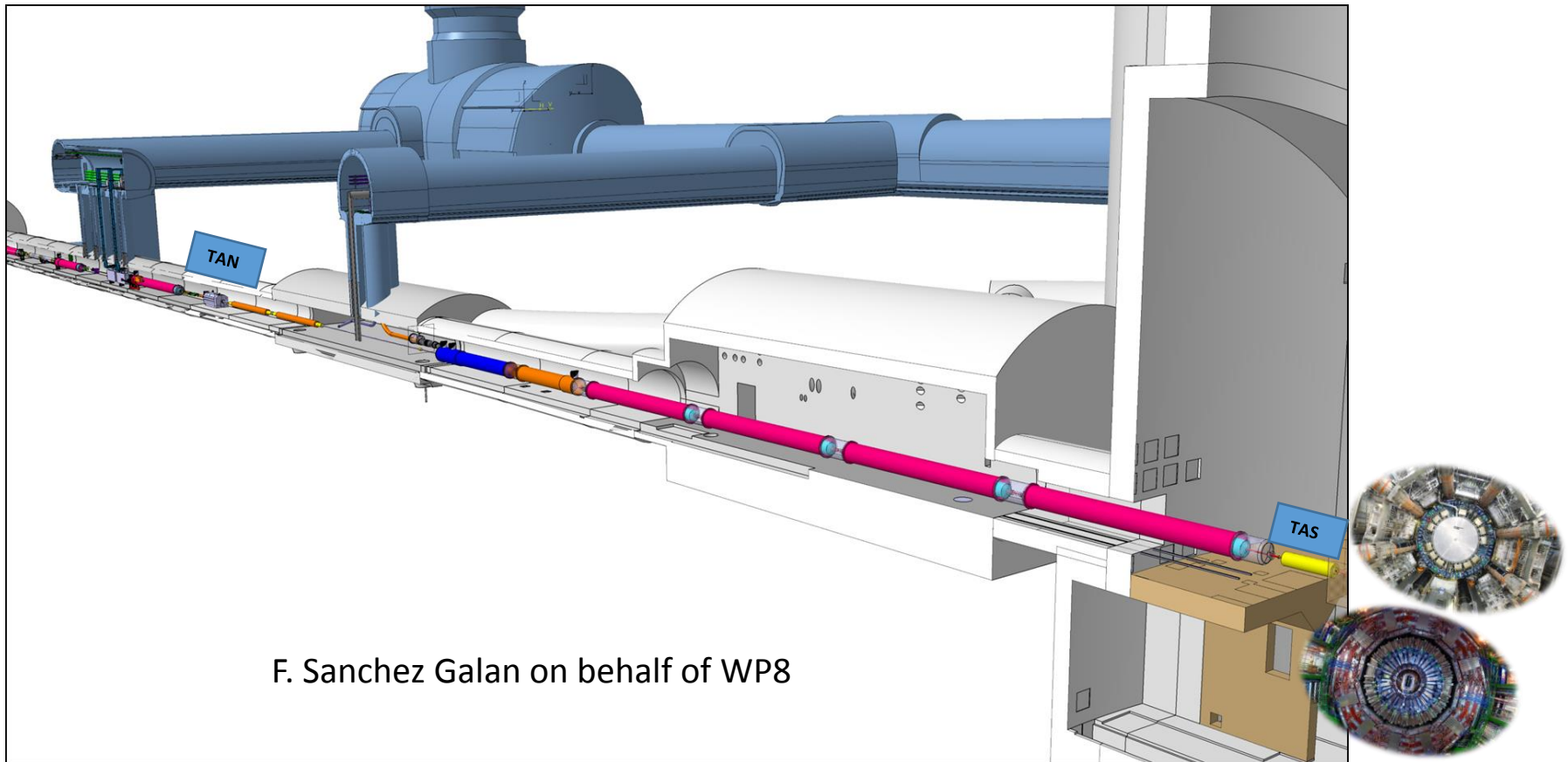


# WP8 Summary of: Expected LS3 Activities Status of procedures



F. Sanchez Galan on behalf of WP8

# TAN (2xIR5 & 2xIR1)

- Removal Forward experiments
- Dismantling services
- Transport TAN



Procedure

- Ongoing
- Ready
- Not started

# TAS (2xATLAS & 2xCMS)



Phase 1 (Q1 in place)

 Decoupling TAS- Beam pipe (Q1 side)


 Removal TAS- Experimental side

Phase 2 (Q1 out)

 Removal services

Phase 3 (Q1 out)

 Re-routing services from/to cavern

 Installation dome+ Ion pump

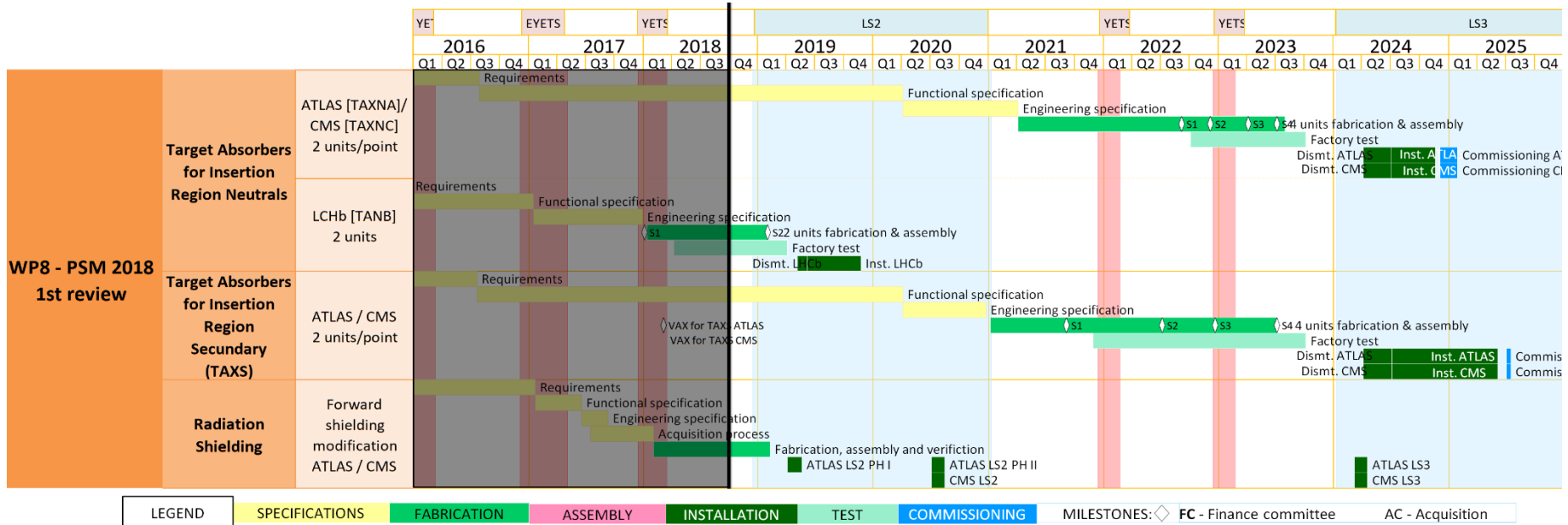
 Installation Q1

# Interfaces & Resources

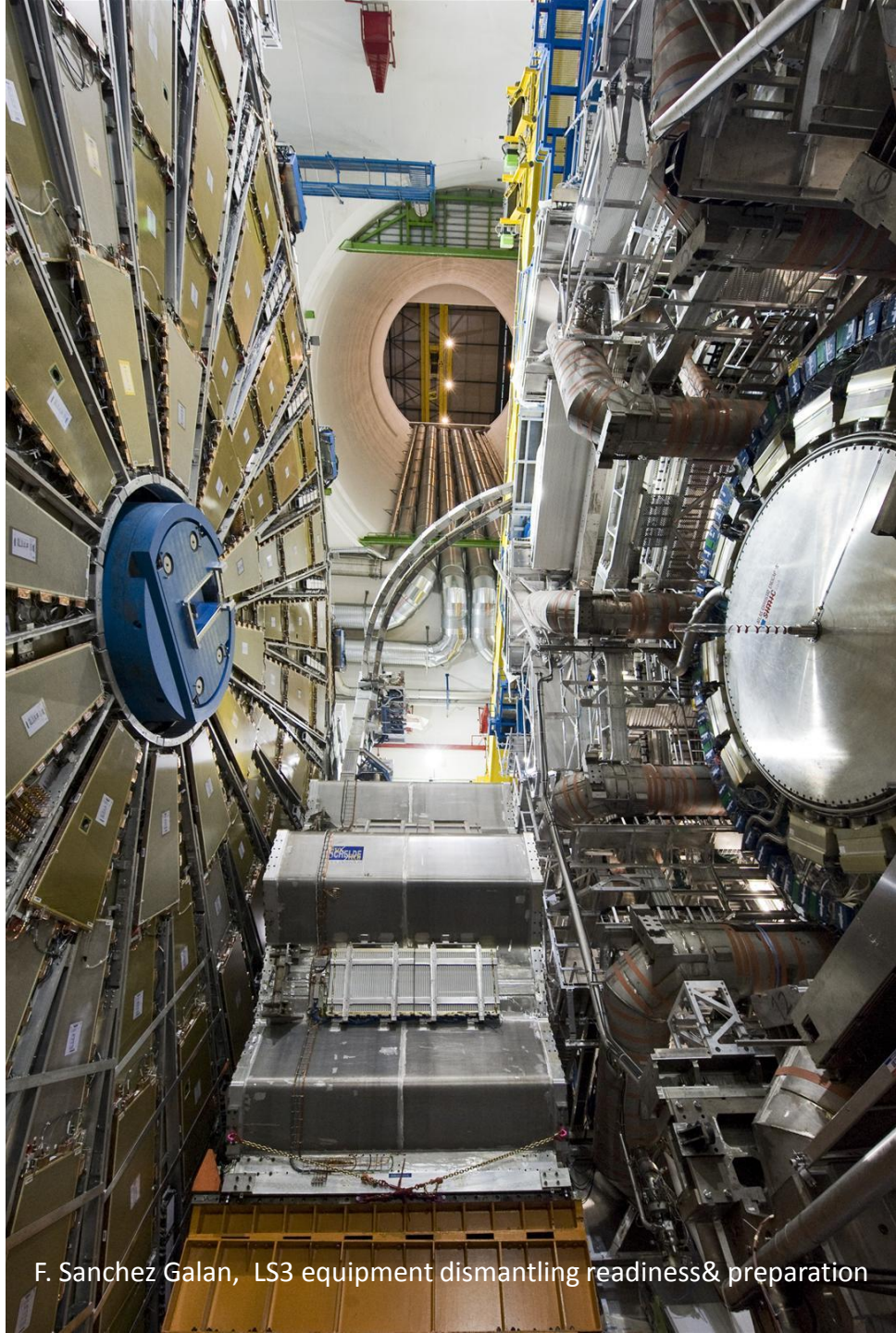
- EN-HE, EN/EL, EN/EA,TE/VSC, TE/VBO, BE-BI, FSU, HSE-RP, ATLAS, CMS, Forward experiments
- Activities will be included in interface document (WPxx-WPxx)
- General planning will be done from Q2-2019
- Budget for TAS & TAN dismantling + services relocation within WP8 (FSU)
- No budget foreseen for remote handling tools @ TAXN region (overhead crane relocation)-> BRAN + no forward physics

# To know the Q1 deinstallation & installation planning is key for us.

Major implication is the coordination with experiments.



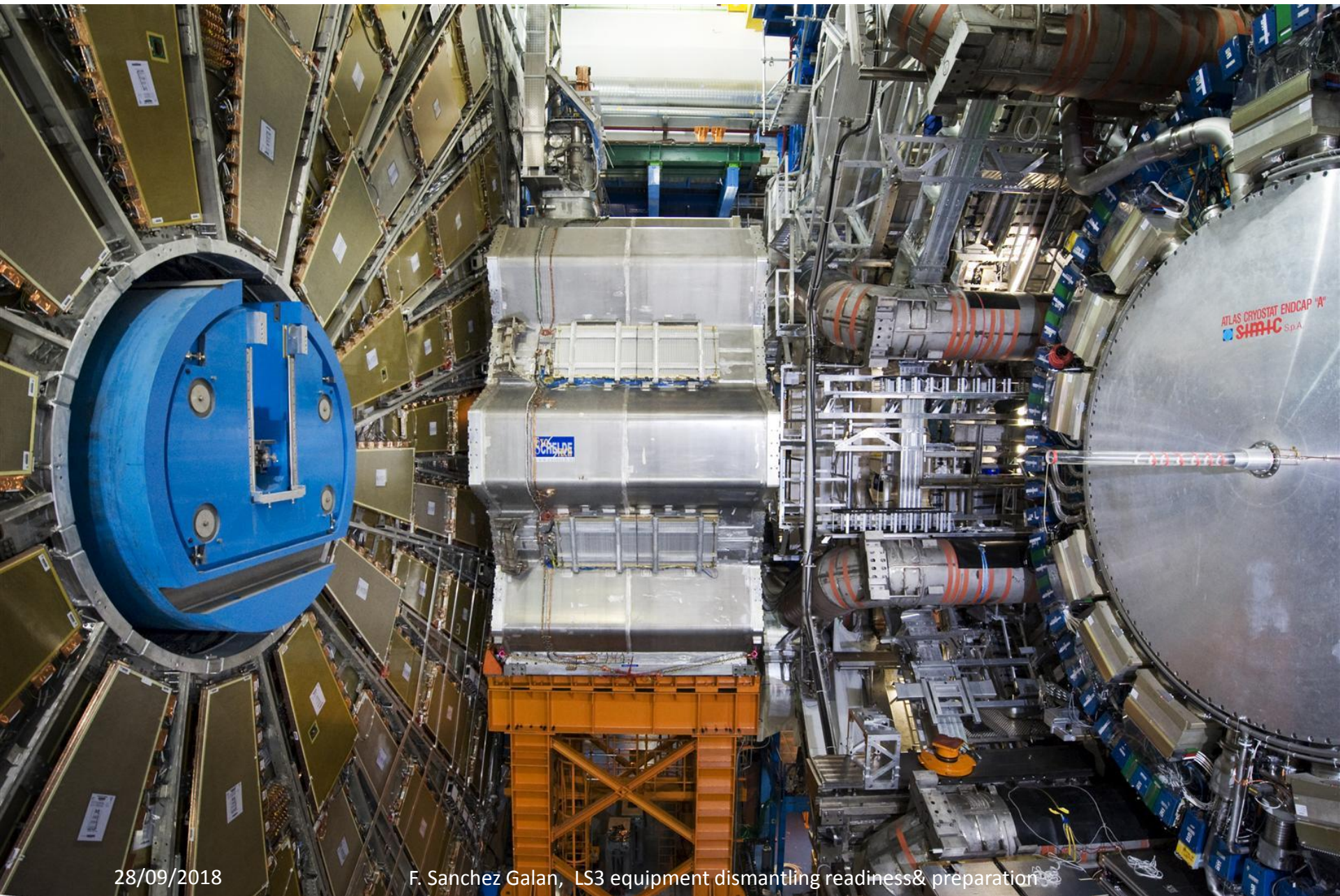




28/09/2018

F. Sanchez Galan, LS3 equipment dismantling readiness& preparation





28/09/2018

F. Sanchez Galan, LS3 equipment dismantling readiness & preparation