

BOLOGNA STATUS REPORT

17/10/2018

Current Etching conditions: 5,5N KOH + 20% Alcohol denatured at 100% with 3% MEK at 45°C

0 - 5h → $\langle v_B \rangle \sim 3,0 \mu\text{m/h}$

5 - 20h → $\langle v_B \rangle \sim 3,0 \mu\text{m/h}$

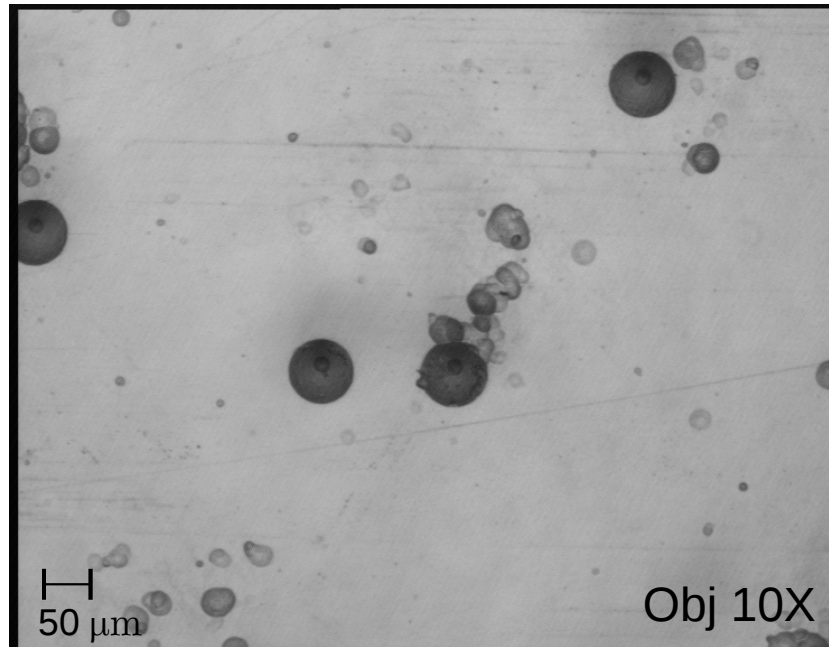
20 - 25h → $\langle v_B \rangle \sim 3,0 \mu\text{m/h}$

Before Etching conditions: 5,5N KOH + 20% Alcohol denatured at 94% with 1% MEK adding manually ~ 1,5% at 40°C

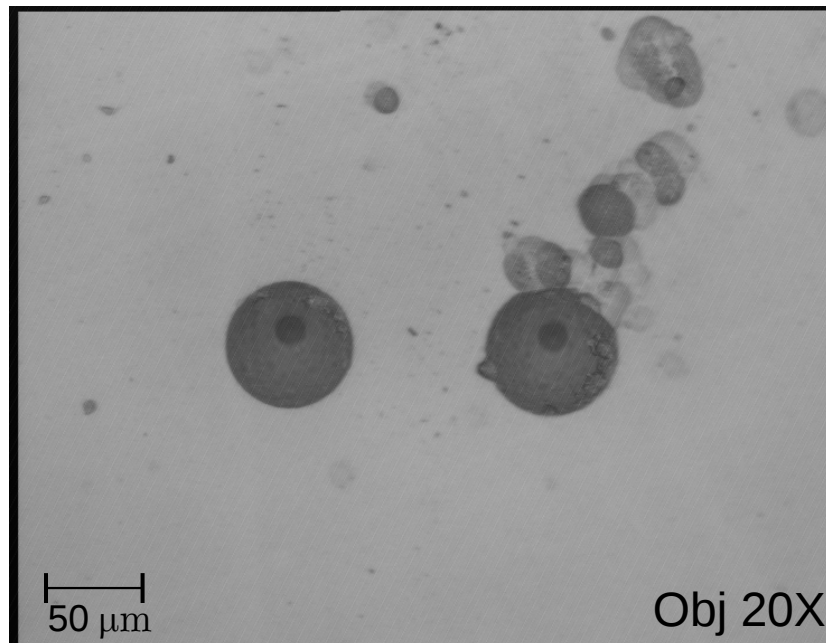
0 - 5h → $\langle v_B \rangle \sim 2,8 \mu\text{m/h}$

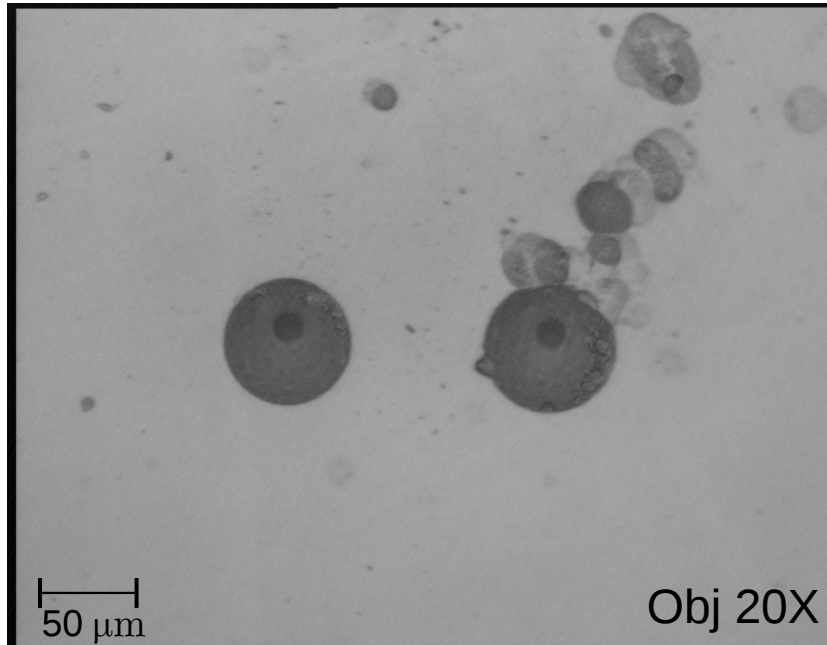
5 - 20h → $\langle v_B \rangle \sim 2,5 \mu\text{m/h}$

Makrofol exposed to Xe beam (2017) Not at LHC

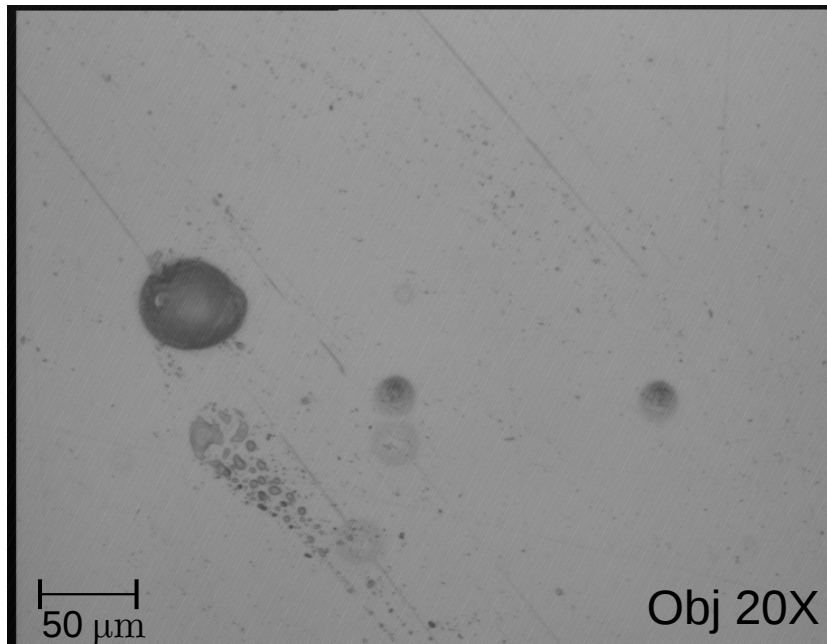


**Eching : 5,5 N KOH +20%[Ethanol + MEK]
45 °C, 25 hours
 $v_B = 3,0 \mu\text{m/h}$**





25 h : $v_B = 3,0 \mu\text{m/h}$



0 - 25 h : $v_B = 2,5 \mu\text{m/h}$

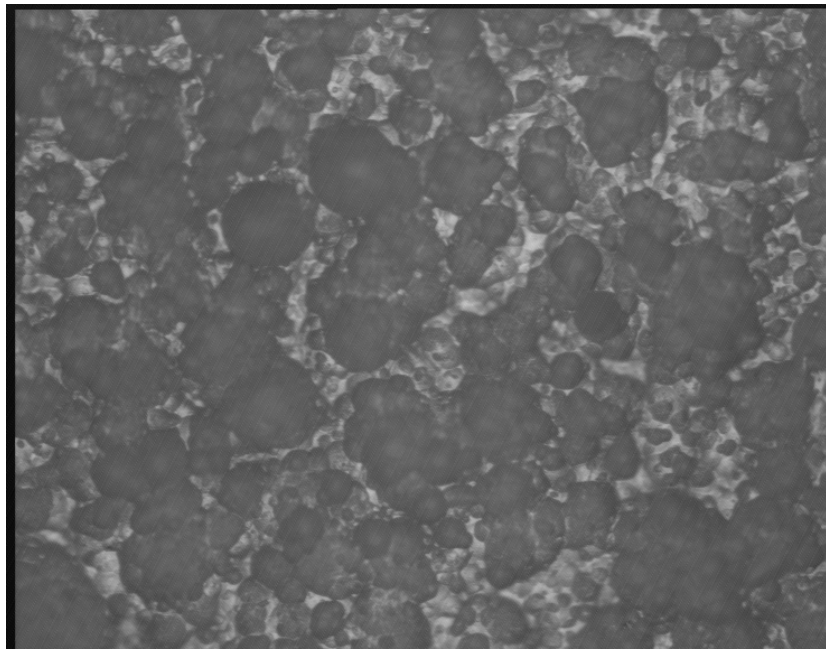
**Previous etchant,
Etching conditions: 40 °C, 25 hours**



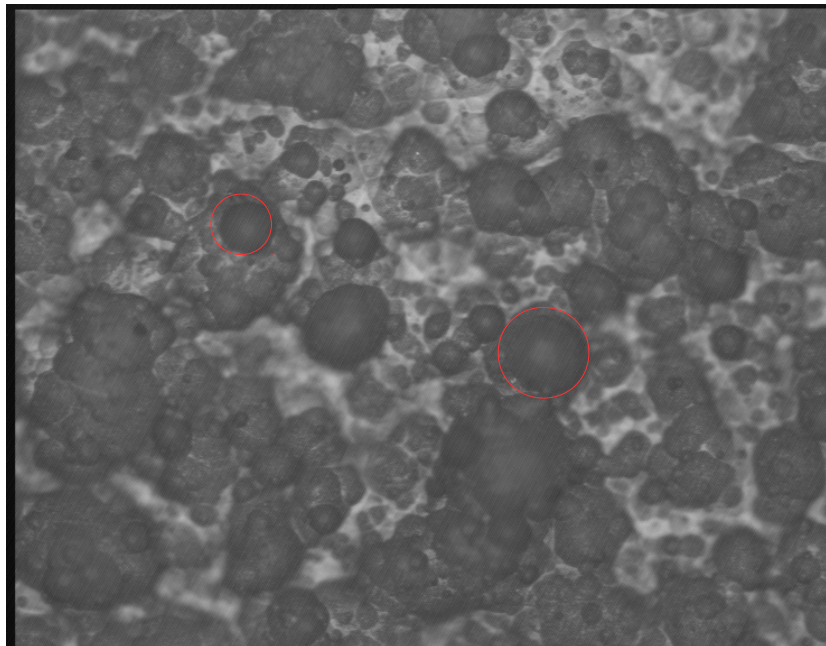
**Xe track
(front and back)**

**Makrofol exposed to
Xe beam, no LHC
Current etchant.**

**Makrofol exposed to
Xe beam, no LHC
Previous etchant.**



Makrofol exposed only to LHC (2016)
Current Etching conditions
 $v_B = 3,5 \mu\text{m/h}$



Makrofol exposed only to LHC + Xe beam
Current Etching conditions
 $v_B = 3,5 \mu\text{m/h}$