

Access to INFN-Pisa Computing Facilities

E. Mazzoni

January 28th, 2019



INFN-Pisa in numbers

- 100sqm room
- About 13000 cores used both for HTC and HPC
- 2PB of disk storage in one GPFS file-system
- More than 20 Grid VO supported
- More than 200 users geographically distributed accessing the site and using resources
- Tier2 for CMS and Belle2
- ... but we are marginally using the facilities for CMSDAS, T2 work will continue as usual



CMSDAS Instructions

All instructions are in

➤ [Wiki](#)

https://twiki.cern.ch/twiki/bin/viewauth/CMS/SWGuideCMSDataAnalysisSchoolPisa2019PreExerciseSetup#Accessing_the_user_interfaces_at

➤ Save it for reference

Here we recall the main points

- Network access
- Login nodes
- Interactive resources

Network access

Wireless networks

- **INFN-Web** open network with captive portal, open a browser and login using credential obtained at registration
- **INFN-dot1x** WPA2 authenticated network only for INFN people (staff and associated)
- **eduroam** WPA2 authenticated network but it does not work with X509 certificates (i.e. CERN users)

Login node

General login machines are

- › gridui1.pi.infn.it (INFN and CERN credentials)
- › gridui2.pi.infn.it (INFN and CERN credentials)
- › gridui3.pi.infn.it (INFN only credentials)

Login there is via

- › Normal ssh also with X11 forwarding if needed
[x2go](#) in case you need better performances X11 (See [here](#))

These are just login machines, NOT the machines where you are supposed to work!!! See next slide

Interactive nodes

Facility dedicated to interactive activity

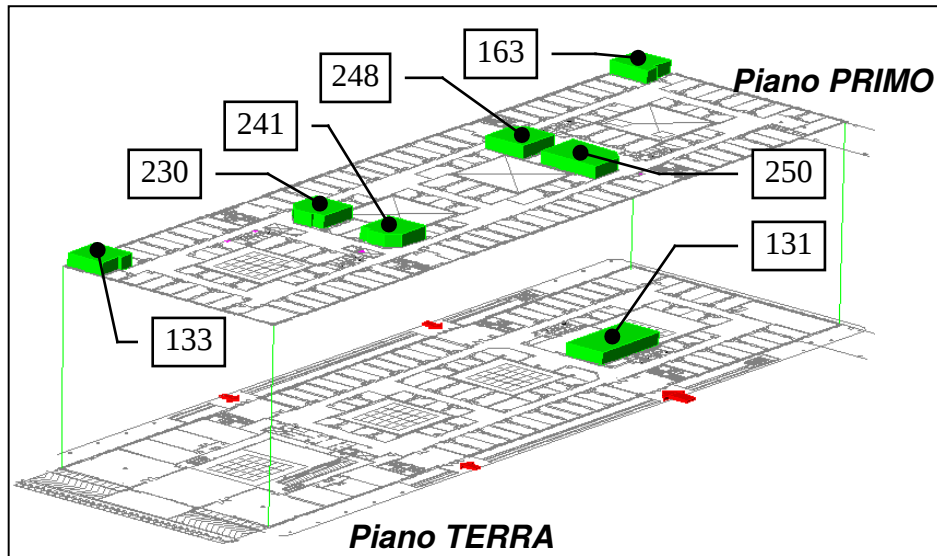
- From a UI you can get access to an interactive node via

```
bsub -ls -q fai -a "docker-ver" /bin/bash
```

Where **ver** could be **sl6** for ScientificLinux 6 environment or **cs7** for CentOS7

- This is opening to you a shell on a machine where you are guaranteed to have 1core with 2GB RAM
- X11 protocol is pass-through, it just works no need of manual action

Logistic info



Useful information

- **Toilets** are available along main corridors
- Four **exits** are located along main corridors nearby meeting rooms
- In case of **emergency** meeting points are down stairs between buildings

Enjoy the school!