

PLI report

F. Pedrosa and J. Coupard



ENGINEERING
DEPARTMENT

Points tackled in this report

- LS2 planning update
- ISTs
- Differential layout drawings
- Drilling, survey marking and equipment supports installation
- General news

LS2 planning update

- All readiness dates will be included in the project files that will be validated by the groups beginning of November 2018
 - We know already that some equipment will not be ready at the announced readiness date available in the documents released in March 2018 (e.g. BTP magnets, Power converters, ...)
- SPS
 - Point 3
 - Dedicated meeting on Monday ([presentation](#)) – Proposal already agreed by CV, EL and RF – detailed report could be given in the next LIU-SPS meeting
 - Point 5
 - Dedicated Fellow (Jonathan) already following the activities and discussions on Frame contact
 - TCDIL
 - Close follow-up by Sebastian

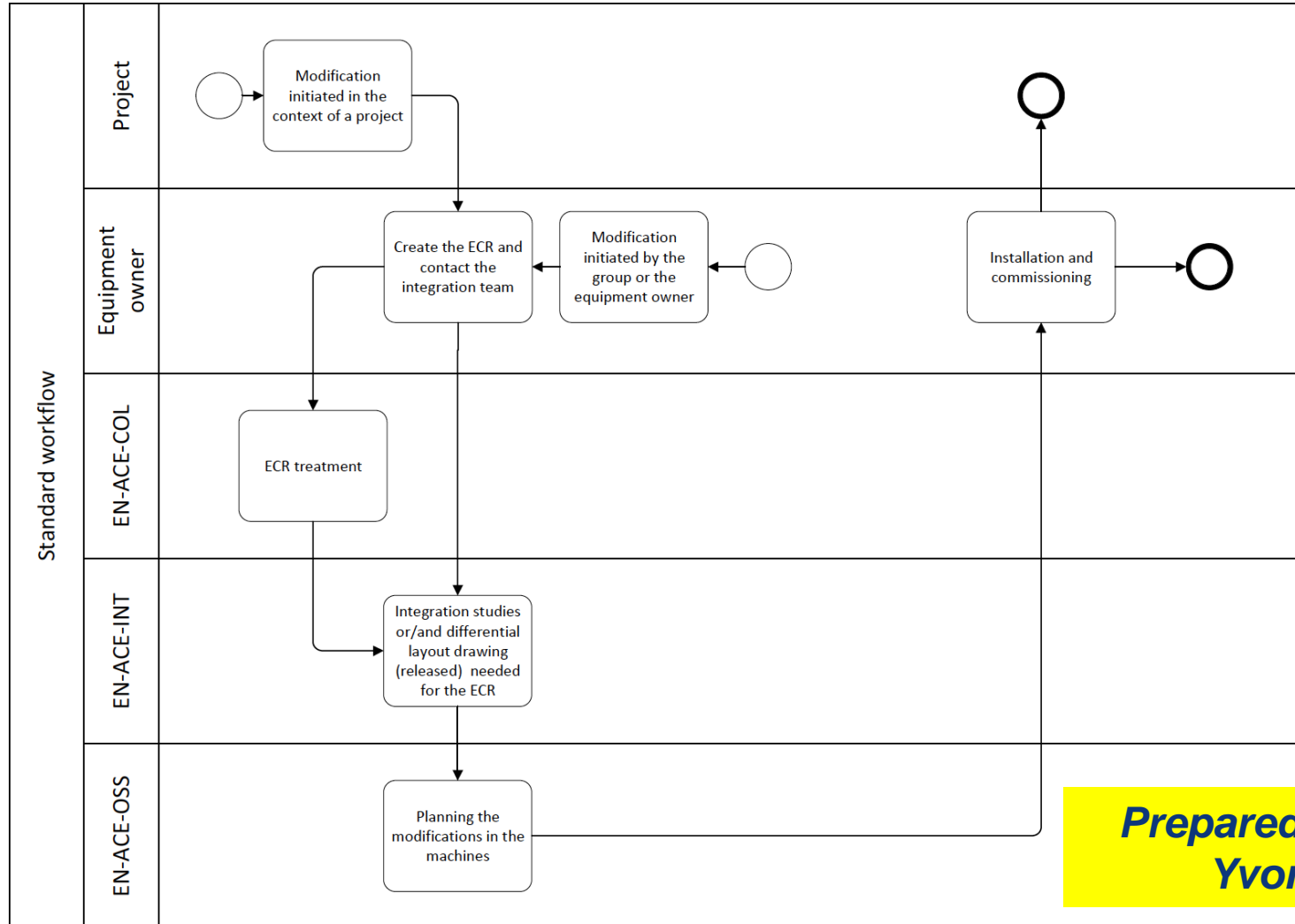
LS2 planning update

- LINAC4 connection
 - Open Days in LINAC4 – associated time to be included in the planning
 - ISTs prior LBE tests will be planned after the open days (some weeks delay with respect to what was presented in the LS2 days on Tuesday)
 - The time for the LBE LINAC4 tests are squeezed by few weeks (should be completed by Xmas2019)
 - EPC confirmed that they can run the power converters without ventilation, but temperature monitoring system should be put in place
 - New Master schedule will include all the above changes and will be sent to the LIU team before presenting it in the LS2C meeting (could be presented as well here before if there is a meeting before the 26th October)
 - The “Mise hors tension” of LINAC4 is responsibility of the LINAC4 Facility Coordinator (BE-ABP)

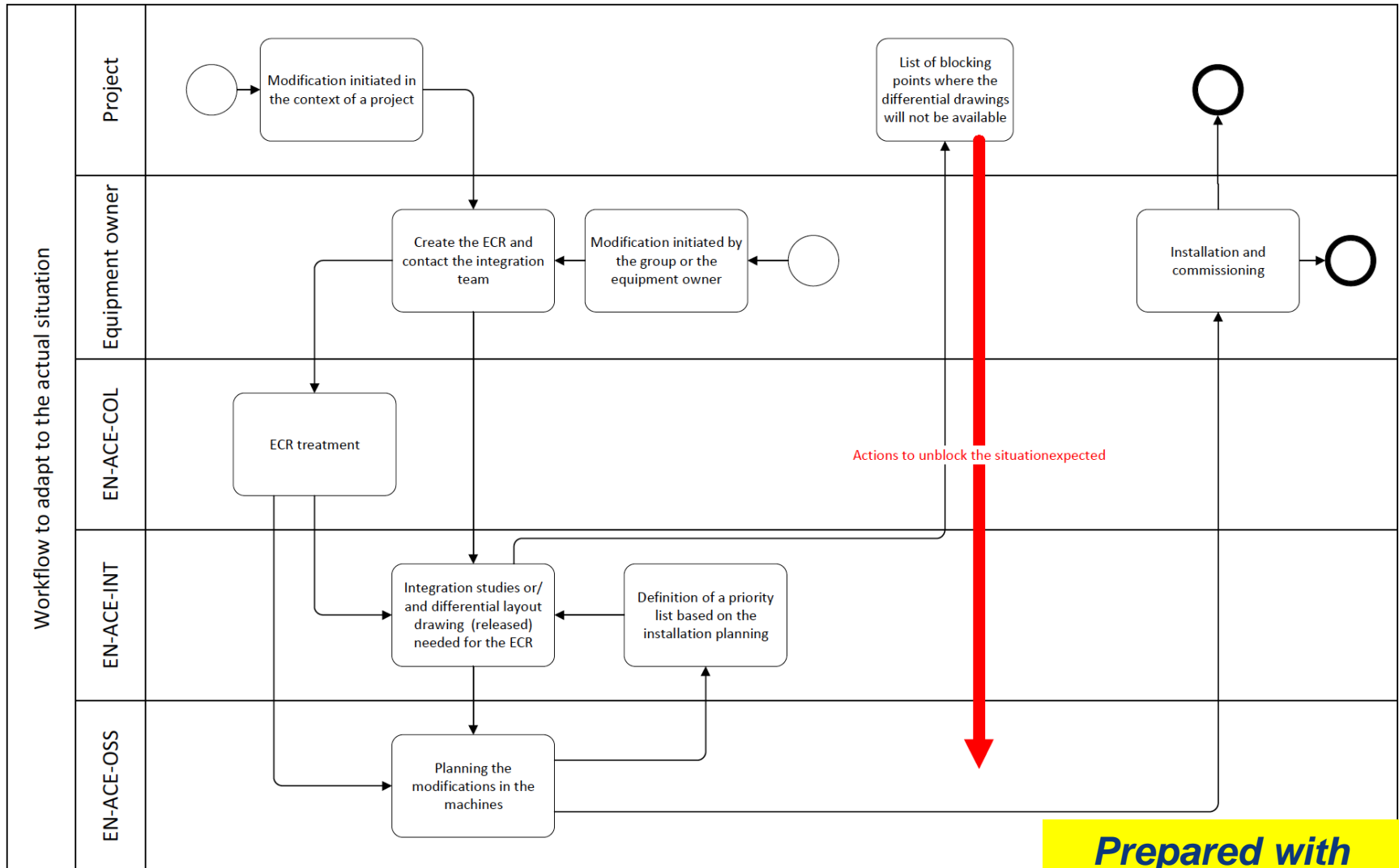
ISTs

- Discussions have been done with Marzia, Verena, Bettina and Ana-Paula
 - IST definition: all tests that cannot be performed with the Facility Coordinator power network separation in place
 - A period of 6 weeks prior to HW commissioning will be allocated in the different machines
 - BE-OP will be involved in the follow-up of this periods
 - If possible these periods will be included in the Master Schedule 1.3 version
 - For some facilities the procedure for the Facility Coordinator power network separation is not yet defined (e.g. PS)

Differential layout drawings – Standard process



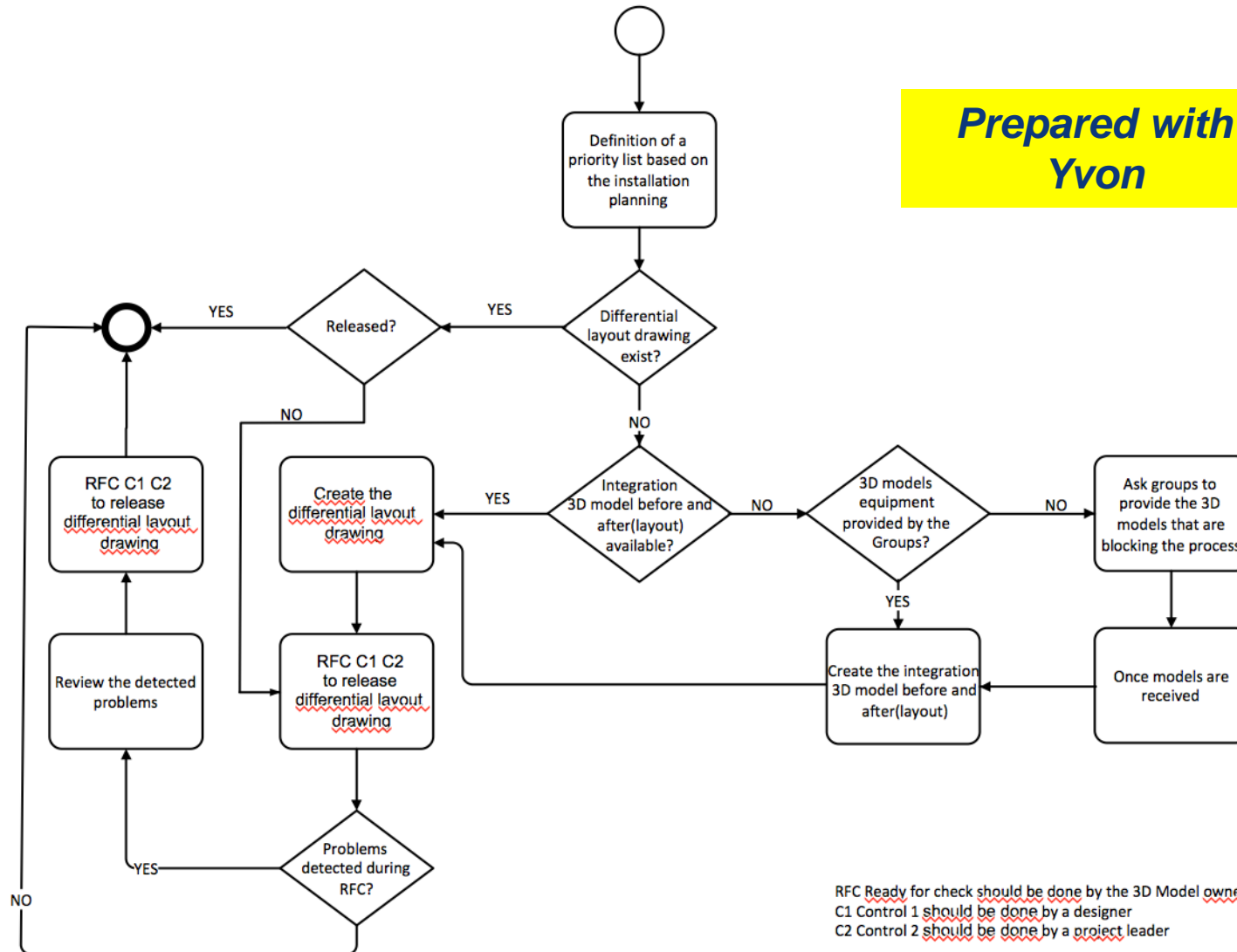
Differential layout drawings – Introduced modification



**Prepared with
Yvon**

Differential layout drawings – Strategy

Prepared with
Yvon



RFC Ready for check should be done by the 3D Model owner
 C1 Control 1 should be done by a designer
 C2 Control 2 should be done by a project leader

Differential layout drawings – Strategy

10/10/18 Suivi des Layouts Différentiels du Complexe PS						JP.Corso
Accélérateur / Ligne	Zone	Secteur	3D Intégration LS2	Plan Layout Différentiel (*) en vert Released	date Installation ou marquage Survey	Commentaires
BI	Booster	Secteur 9	90%	PSBLJ_UI0002	Mai 2019	BTV pas finie
BT	Booster	Secteur 1	OK	à créer	Mai 2019	
BT	Booster	Secteur 2	OK	PSBLJ_UI0011	Mai 2019	
BT	Booster	Secteur 6	80%	à créer	Mai 2019	3D KFA en cours de finition
BT	Booster	Secteur 7	OK	à créer	Mai 2019	
BT	Booster	Secteurs 17-18-19-20-21	60%	PSBLJ_UI0034	Mai 2019	manque Supports EN-MME
BTM	Booster	Section 1	90%	à créer	Mai 2019	manque Supports EN-MME
BTY	Booster	toute la ligne	90%	à créer	Mai 2019	manque modele BCT BE-BI
BTP	PSB / PS	toute la ligne	80%	à créer	Mai 2019	manque Supports EN-MME + Booster & cote PSB a completer (JML)
Booster		Periode 2	????	à créer	Mai 2019	la, je savais meme pas que y'avait quelque chose a faire !
PS		SS25	OK	PS_UI_UI0014	Mai 2019	démontage des aimants
PS		SS73	OK	PS_UI_UI0016	Mai 2019	démontage des aimants
PS		SS33	OK	PS_UI_UI0017	Mai 2019	Remontage des aimants
PS		SS49	OK	PS_UI_UI0015	Mai 2019	Remontage des aimants
PS		SS48	OK	PS_UI_UI0018	Mai 2019	voir avril 2020
PS		SS54	OK	PS_UI_UI0004	Mai 2019	version YETS - version LS2 a faire
PS		SS88	50%	à créer	Juin 2019	Modele RF LS2
LT	Linac 2	Secteur 2	OK	PSBLJ_UI0029	Juin 2019	
Booster		Periode 4	OK	PSBLJ_UI0031	Juin 2019	
Booster		Periode 5	OK	PSBLJ_UI0023	Juin 2019	
Booster		Periode 7	OK	PSBLJ_UI0024	Juin 2019	
LBE		toute la ligne	OK	à créer	Juillet 2019	
LBS		toute la ligne	90%	à créer	Juillet 2019	manque support U coupé

- We started yesterday to implement this new change and we have already an excel table that includes PS, PSB and LINAC4 connection
- We will keep doing this exercise and next week we will provide you an excel that includes as well SPS
- Target defined with the integration colleagues is to have the differential layout drawings at the latest 2 months prior to the defined installation date
 - Your support is essential to keep pushing the groups to provide the information/models/validations and we will update this table on a regular basis to give you a continuous updated vision

Drilling, survey marking and equipment supports installation

- EN-SMM (survey) announced that they will mark on the beam line and the start and end of the equipment
- Equipment owner or activity technical coordinator can ask Michel to perform the drilling (associated cost), but they will need to provide Michel what he needs for the drilling

General news

- Simon Mataguez is officially activity technical coordinator for the LINAC4 connection (instead of Gian Piero) from December 2018 to September 2019