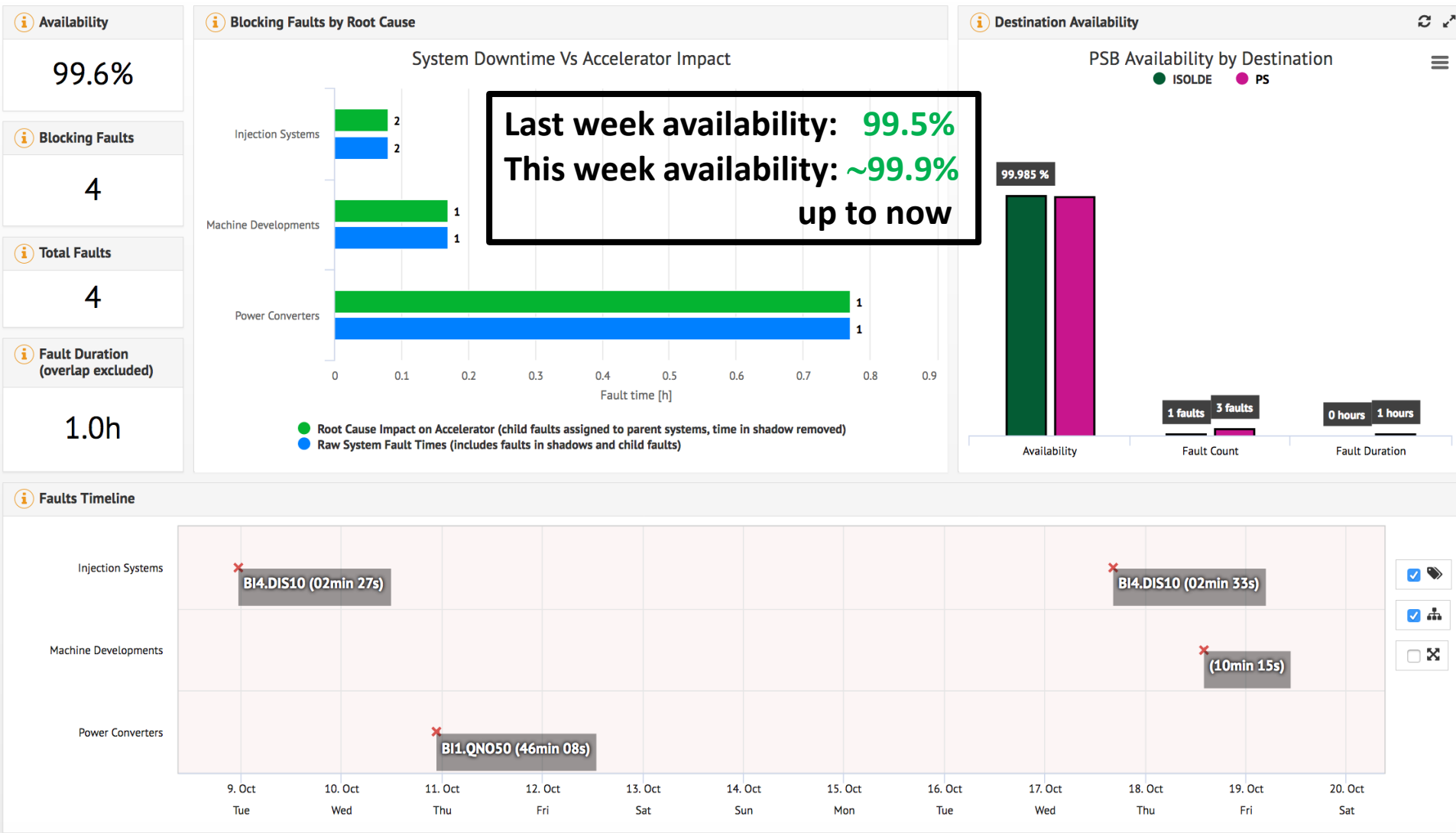


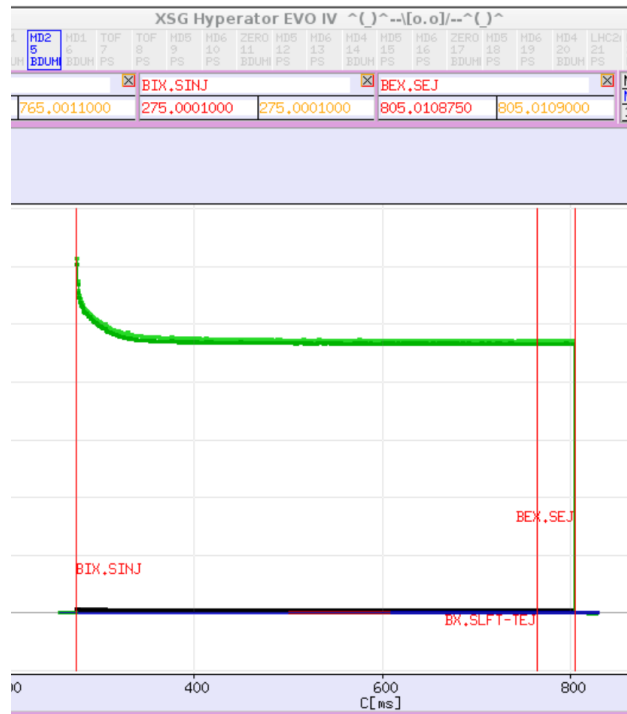
# PSB Operation: Last 2 Weeks



Excellent running last 2 weeks with only a hand-full short faults; a few non-blocking faults of the Finemet cavity degraded R4 intensity for ISOLDE during that period

# Operational and MD Beams Status

- All **operational beams** are available.
- Special beams have been prepared and checked for the **LHC MD4** run next week, including 8b4e (taken yesterday by the SPS)
- **Reference measurements** practically finished; a few still outstanding and data quality checks to be done
- New TFB commissioning advancing very well
  - >900e10 p (R3) of an ISOLDE beam could be accelerated using the R3H new TFB
  - Aim for a mini-reliability run of new TFB for ISOLDE until remainder of the p run



# Operational and MD Beams Status

---

## List of MDs this week so far (apart from reference measurements):

- Resonance compensation: ABP (Foteini) mapped resonances at 160 MeV and proposed corrections → to be applied the next days
- Emittance measurement along the cycle
- BCMS brightness measurements
- Q3 optics
- Q3Q5 cycle studies
- Instability studies
- TFB commissioning
- YASP for PS injection
- Test to implement 8 servo loops for Finemet (for multi-harmonic operation)