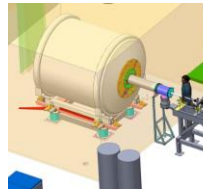




MINIBALL



SCATTERING EXPERIMENTS



ISS



COLLAPS



ISOLTRAP



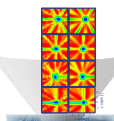
CRIS



IDS



VITO



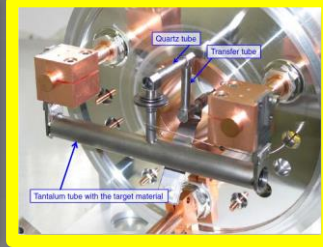
SSP



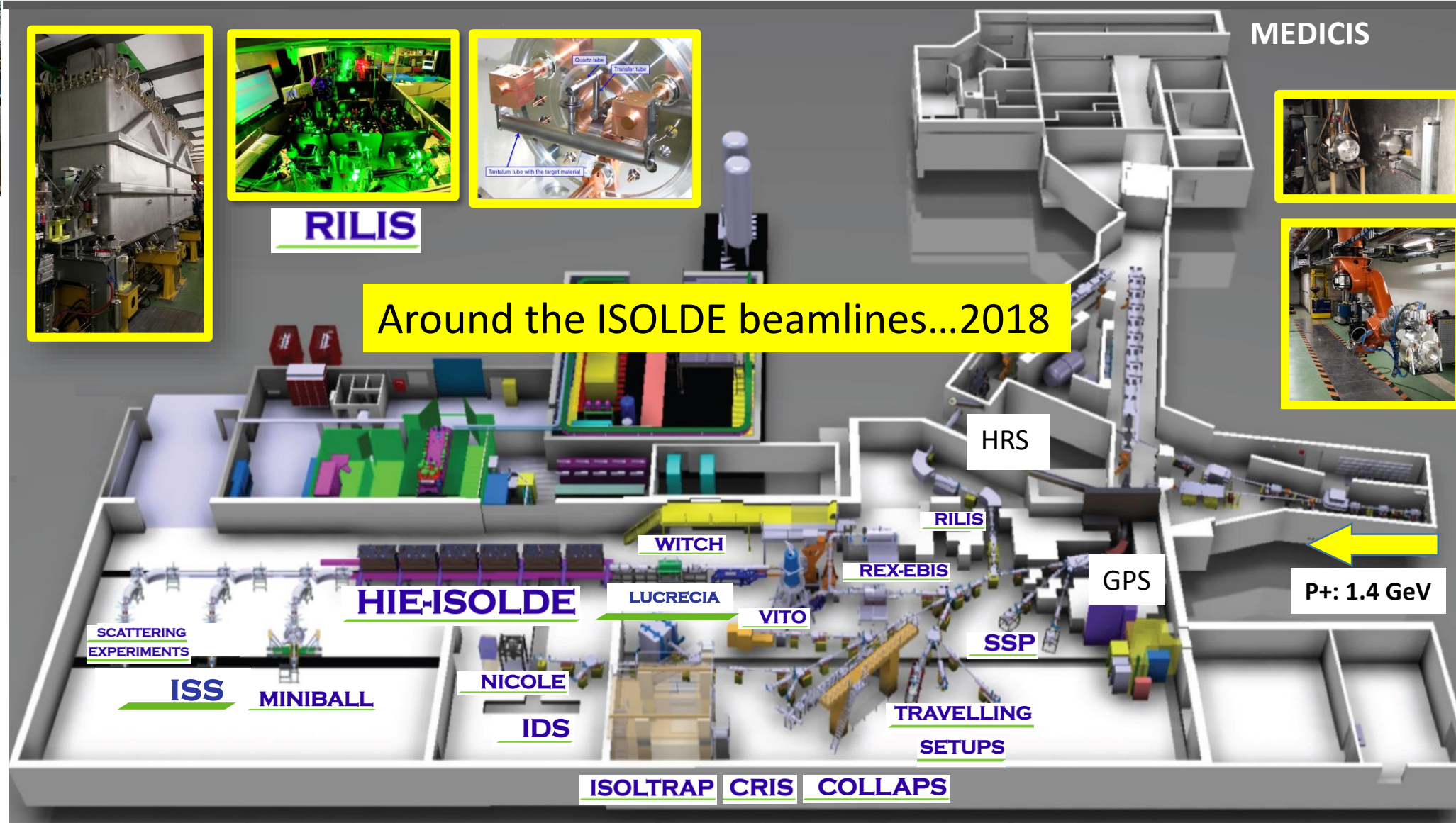
MEDICAL ISOTOPES



RILIS



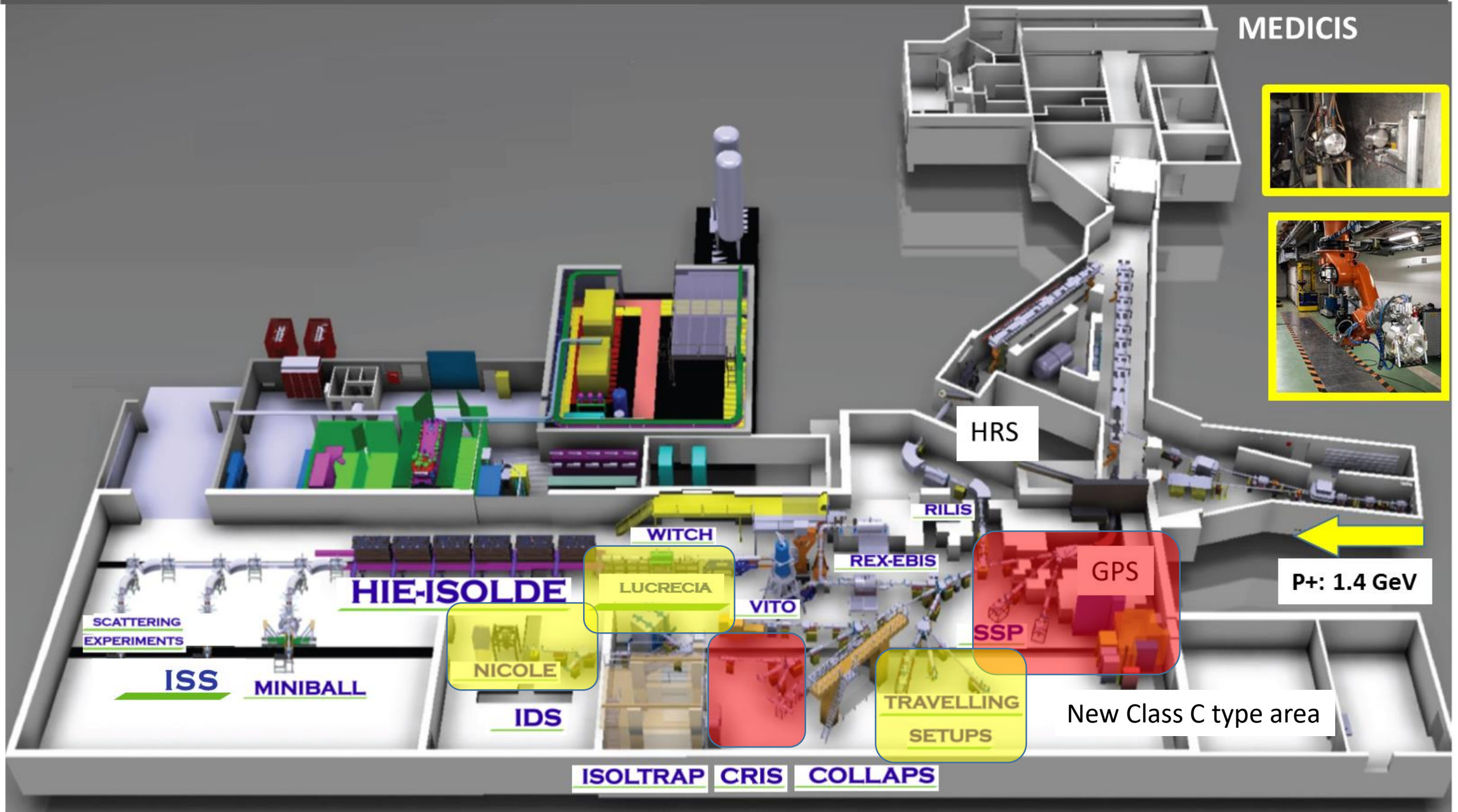
Around the ISOLDE beamlines...2018



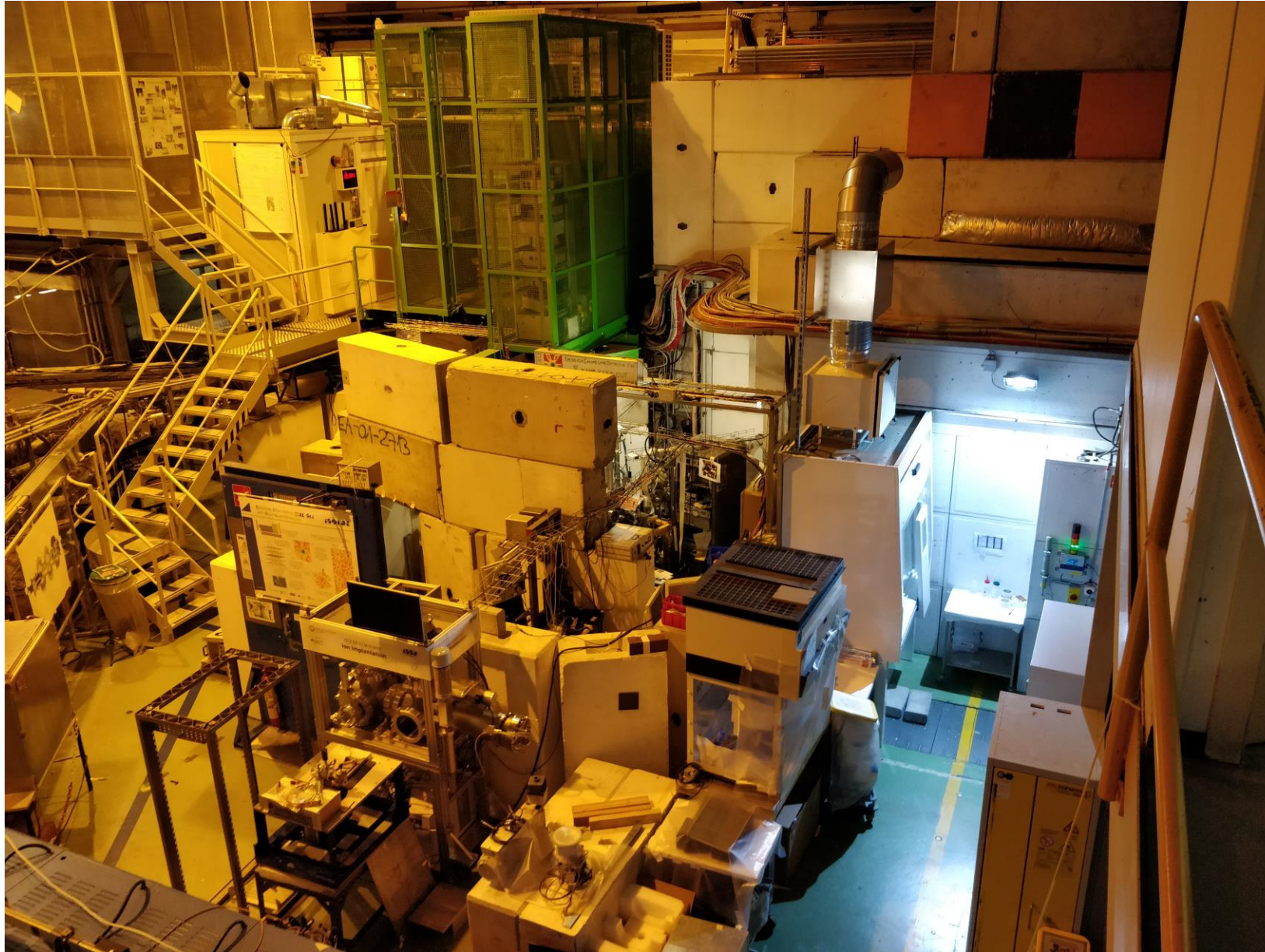
MEDICIS



# MEDICIS



←  
**P+: 1.4 GeV**



GLM/GHM:

Installation of new shielded fume cupboard.

New collection chamber to go online

Redistribution of space and semi-closing for class C workspace.

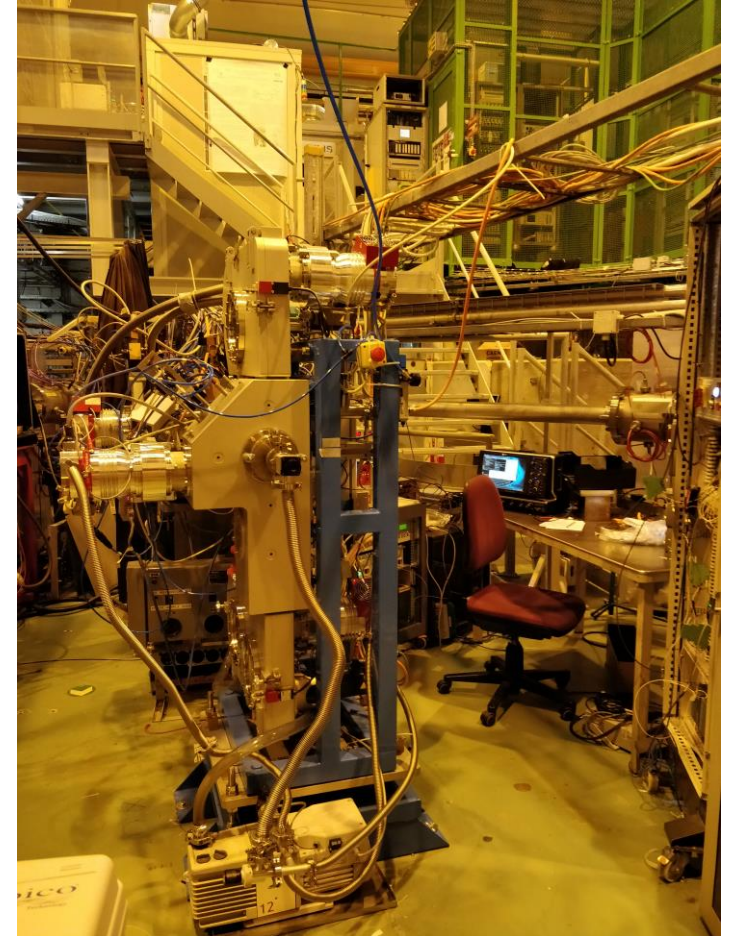
HOWEVER: important to maintain access for visiting/temporary/new setups.



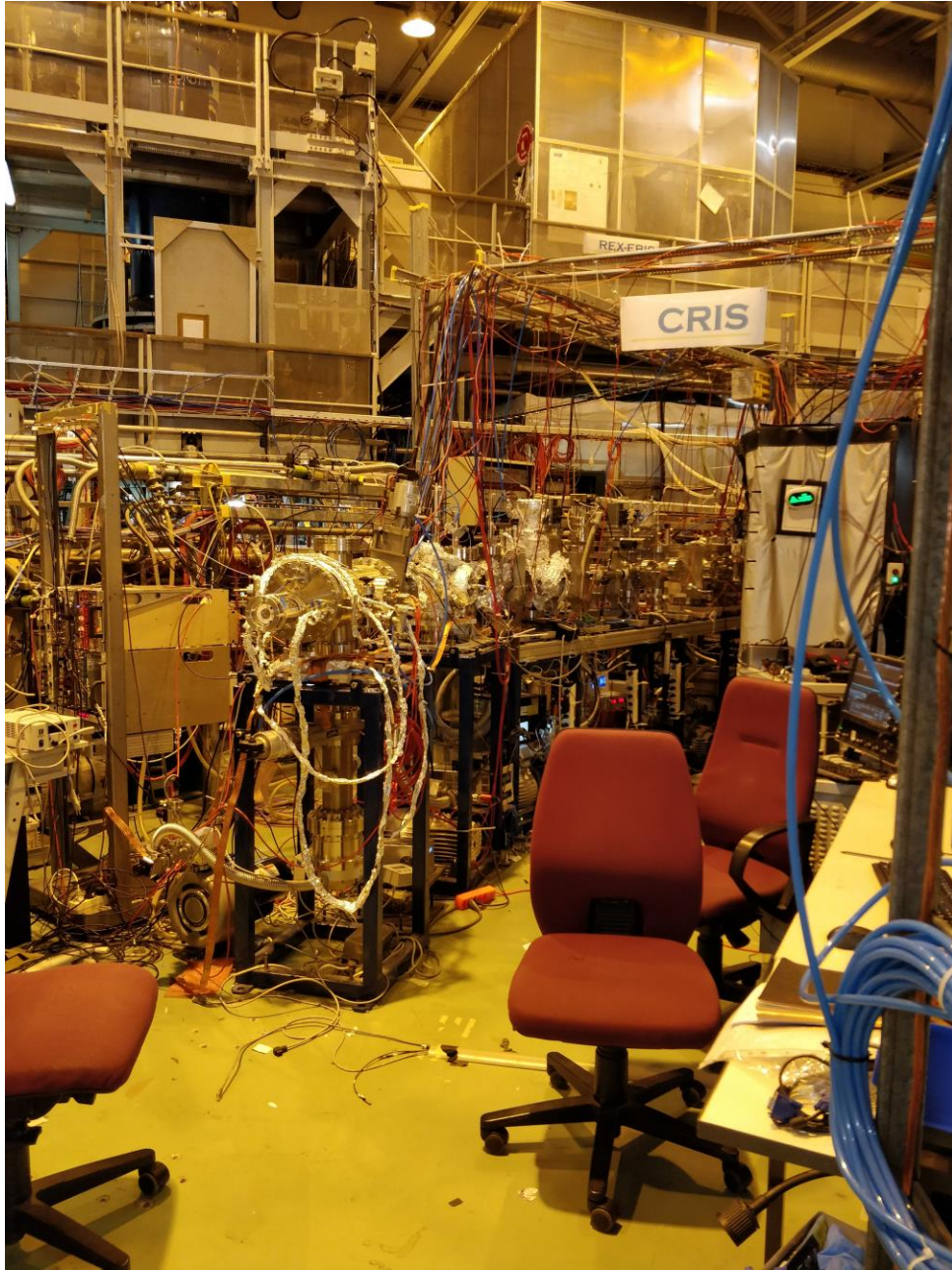
# LA1/LA2



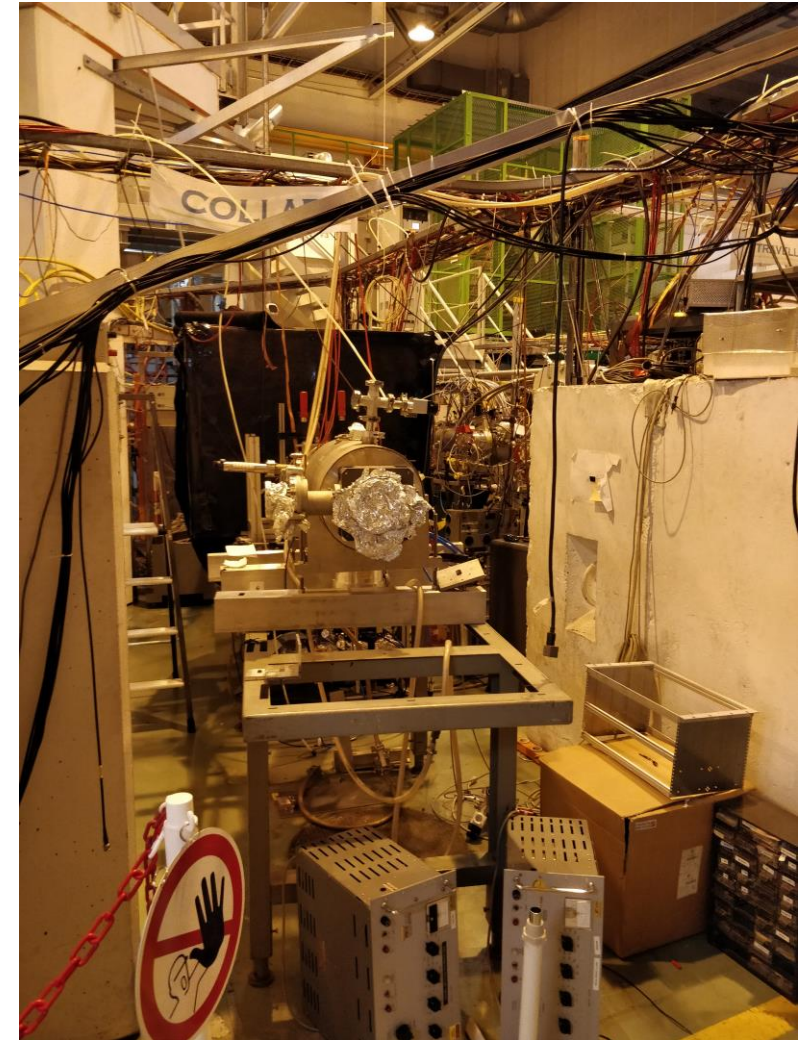
LA1 to be kept for travelling experiments.

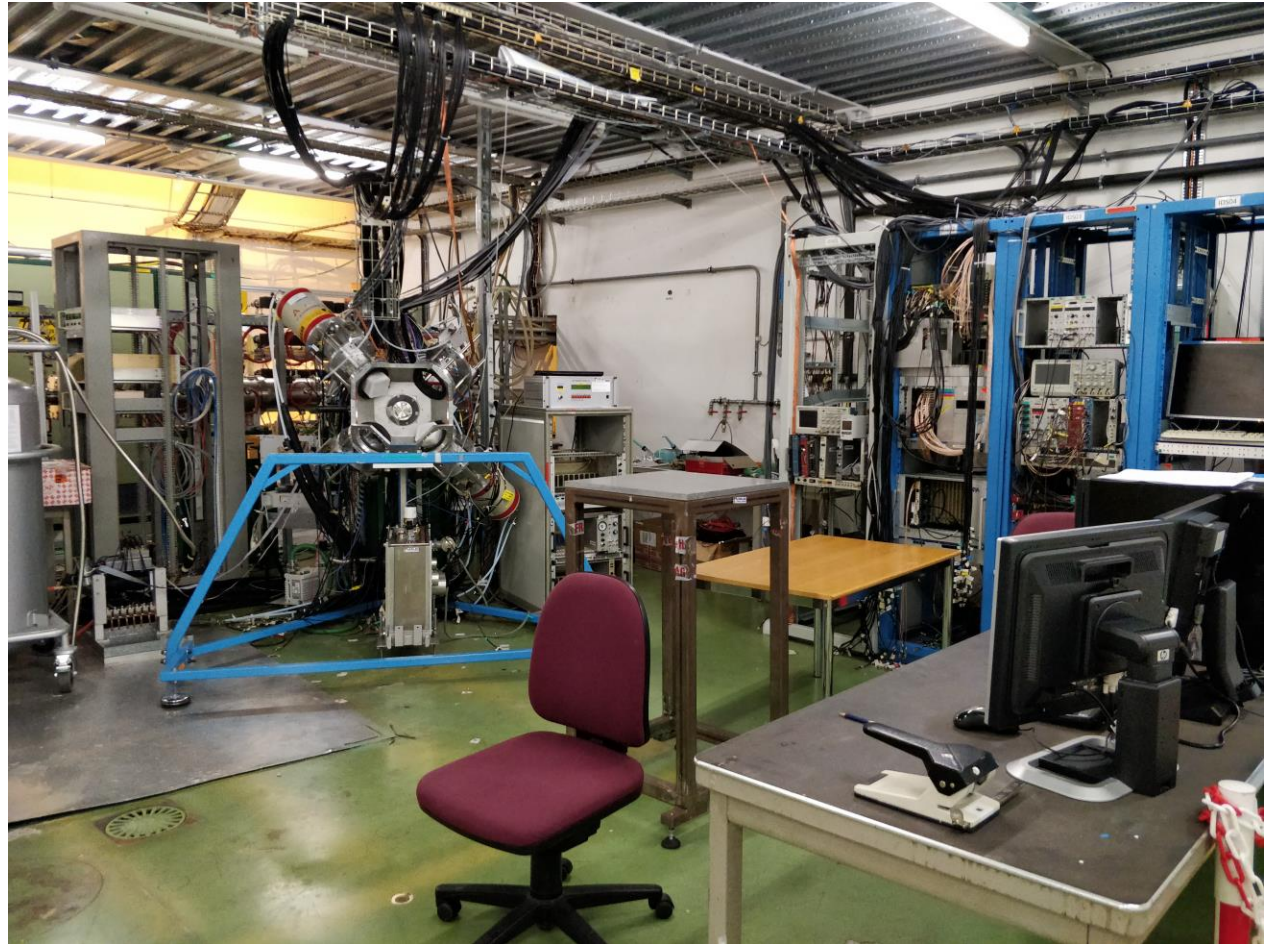
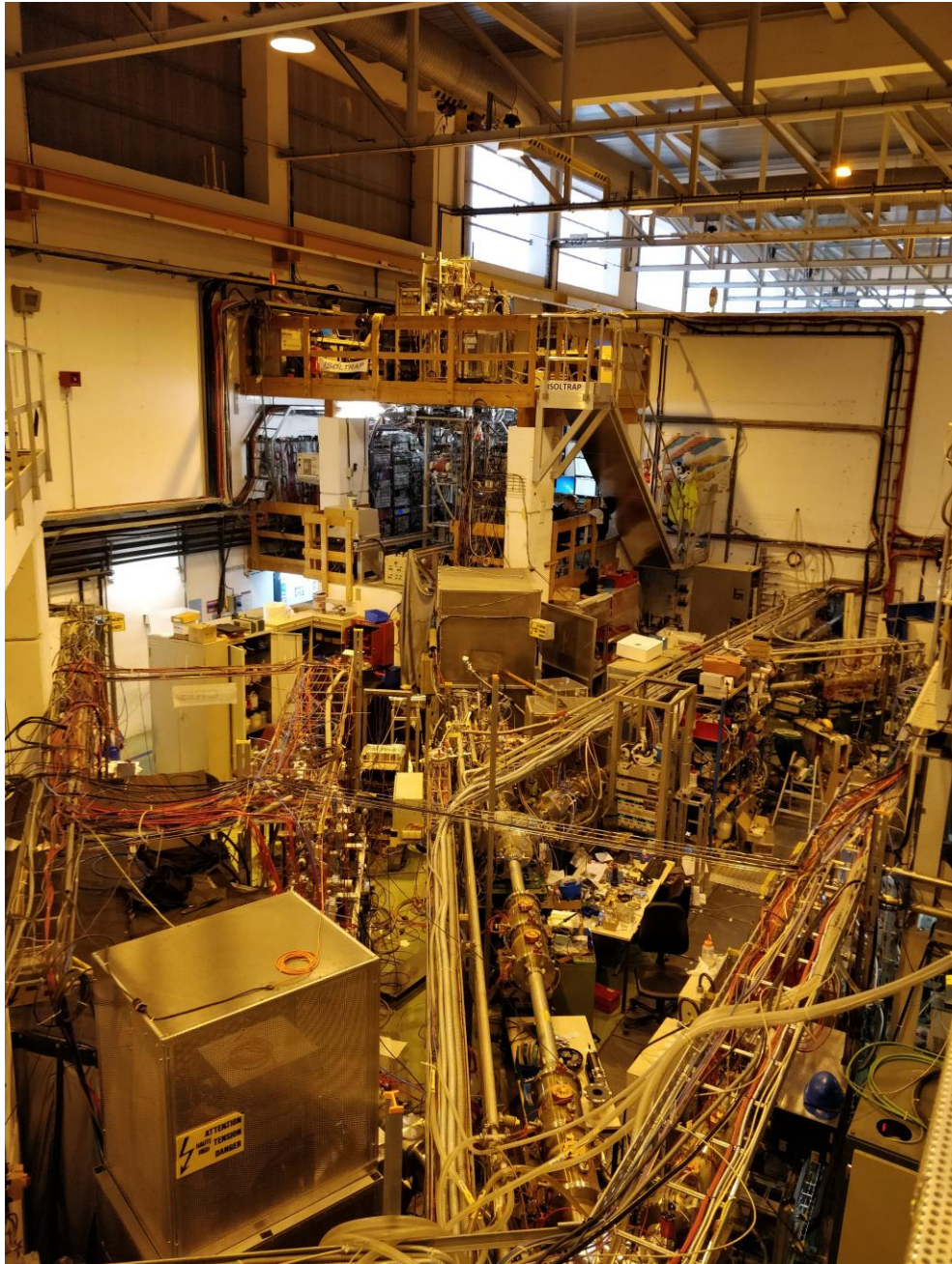


LA2 currently occupied by FTS;  
future site for MIRACLS?



CRIS platform:  
status? Impact on  
neighbouring  
experiments?







## Status of NICOLE?

Cooling underway at the moment. No beam since ~ 2010

How cold can it go? Collaboration?

Interest in the space from other groups....

NICOLE		
IS460	12	12
IS575	17	17

### NICOLE

2007

Magnetic dipole moments of High-K isomeric states in Hf isotopes  
IS460

2013

Beta-delayed neutrons from oriented  $^{137,139}\text{I}$  and  $^{87,89}\text{Br}$  nuclei  
IS575

29

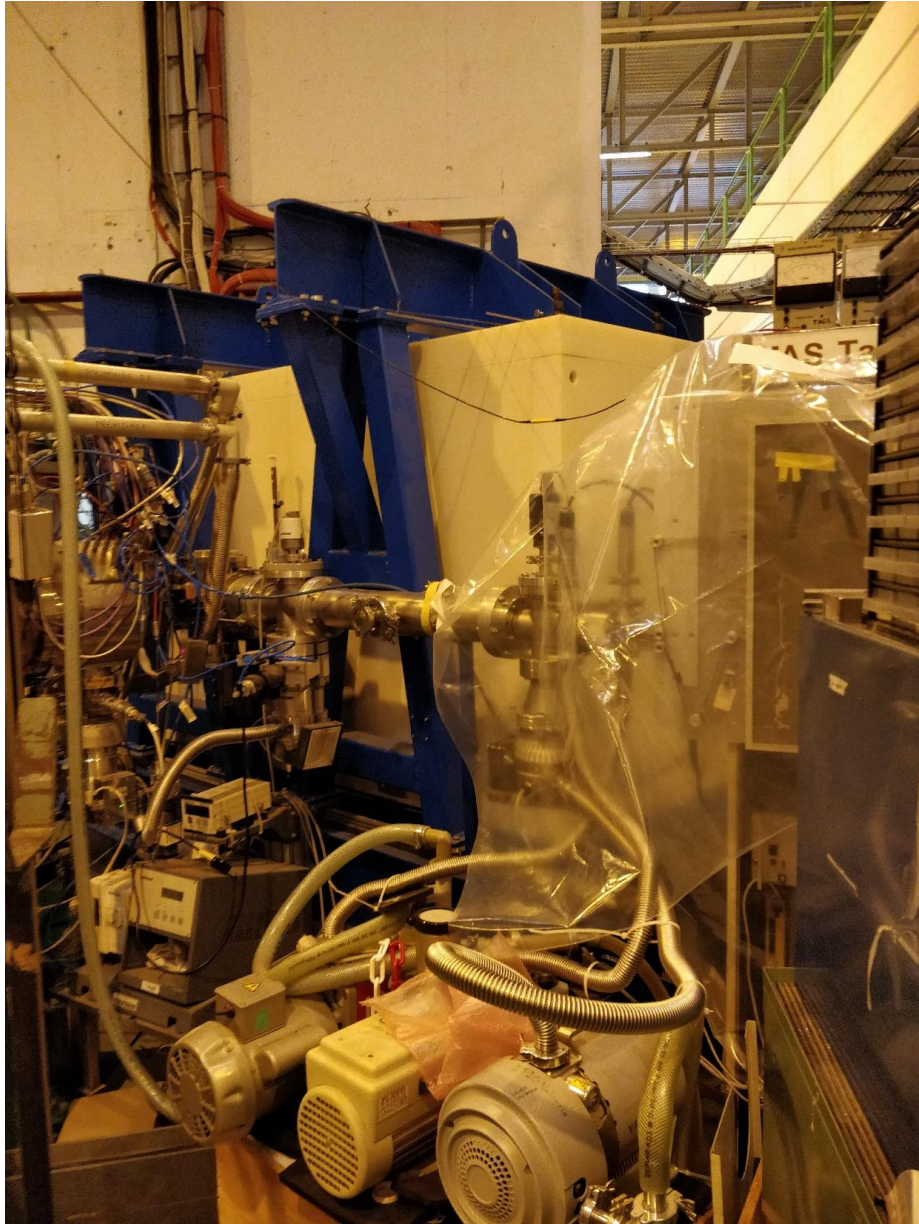
12

12

17

17



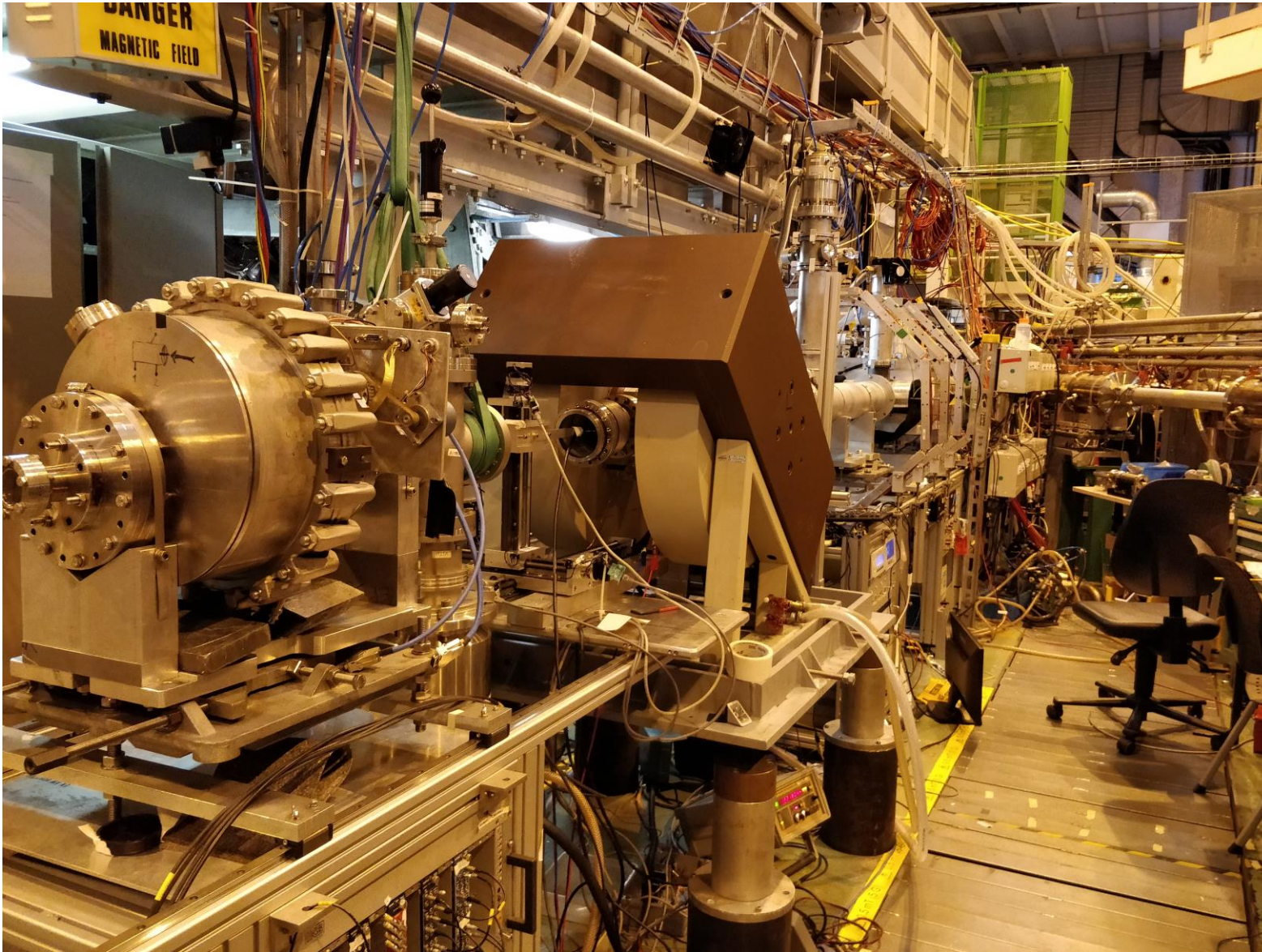


TAS/Lucretia

No current experiments (since RB in September)

Technical modifications needed for future running.

Collaboration are discussing future plans.



VITO:

Setup making continual progress

Still experiments which were envisaged for VITO but unlikely to be possible.

Row Labels	Sum of Shifts remaining (Feb 2018)	Sum of Shifts remaining 2018
<b>Biophysics</b>		
IS582	15	15
IS583	18	18
IS602	17.5	9.5
I-205	3	0





Various upgrades planned during LS2

No longer reliant on ANL

Scattering chamber: getting busy either within or shooting through...



Future setups:

PUMA

Revised (hopefully not the same) ASPIC-type beamline

HIFI 2.0?

New online Mossbauer chamber and PAC setup.

Row Labels	Sum of Shifts remaining 2018
+ BIO	48.5
+ COLLAPS	33.5
+ COLLAPS; VITO	13
+ Collections :7Be	24
+ Collections: 163Ho	6
+ CRIS	30.5
+ ECSLI	2
+ Gandalph	17
+ IDS	47
+ ids -aarhus/madrid	0
+ IDS LA1	2
+ in-source	22.5
+ ISOLTRAP	40
+ la1	15
+ LA1 Bordeaux	12
+ MEDICAL	6.5
+ Miniball	481.5
+ NICOLE	29
+ SSP	59.5
+ TAS	11.5
+ TISD	12
+ VITO	5.5
+ Windmill; ISOLTRAP	0
+ Scattering chamber/Edinburgh	42
+ Scattering chamber/Dubna	12
+ Scattering chamber	31
+ Tilted foils	13
+ MAYA	43
+ Actar	28
+ ISS	3
<b>Grand Total</b>	<b>1090.5</b>



B. 508:

Upgrade to new wifi standard (still some problems however)

Serious issue with roof. Leak due to puncturing of pipes during false ceiling installation.

Requires quite a repair (covered by guarantee) but will be done in January (tbc)