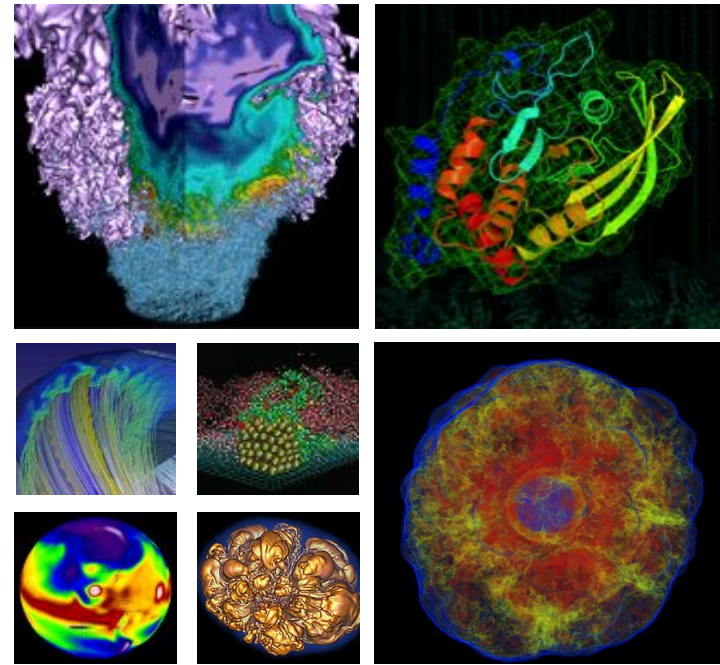


PDSF Site Report



**Georg Rath, James Botts, Jan
Balewski, Jefferson Porter**

HEPIX19 Spring/25.03.2019

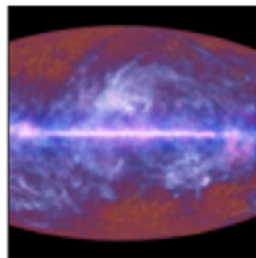
National Energy Research Scientific Computing Center



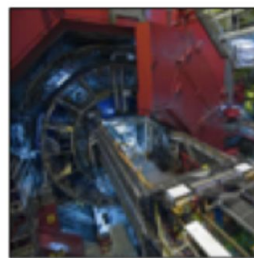
NERSC history of experimental & observational science projects



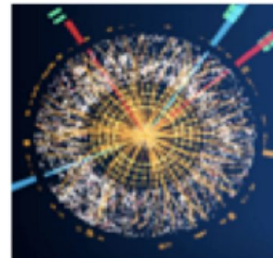
Palomar Transient
Factory
Supernova



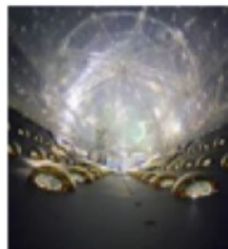
Planck Satellite
Cosmic Microwave
Background
Radiation



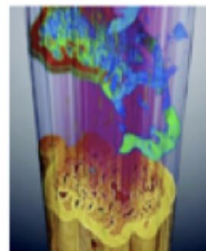
Alice
Large Hadron Collider



Atlas
Large Hadron Collider



Dayabay
Neutrinos



ALS
Light Source

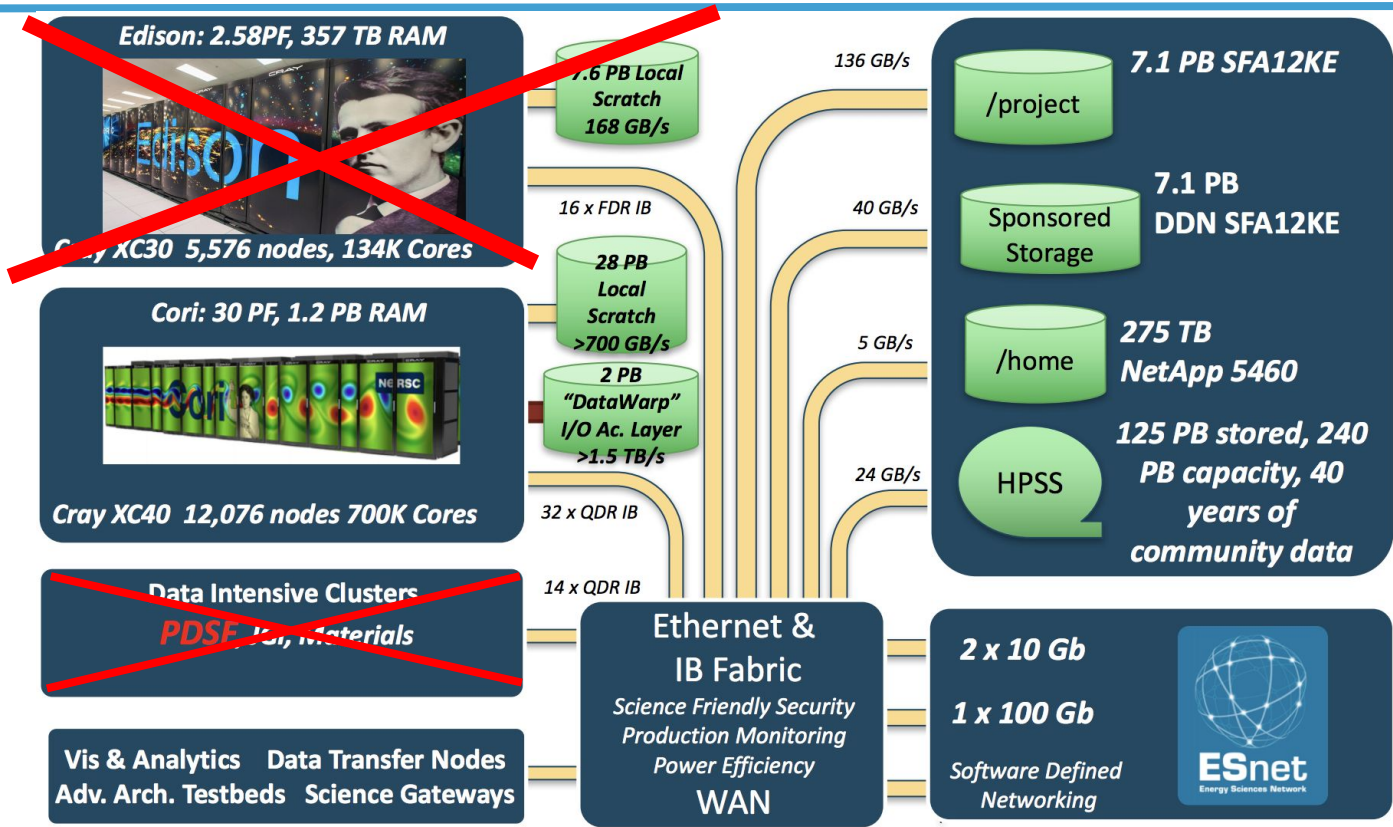


LCLS
Light Source



Joint Genome Institute
Bioinformatics

NERSC Systems Today



PDSF: Parallel Distributed Systems Facility serving the community since 1996



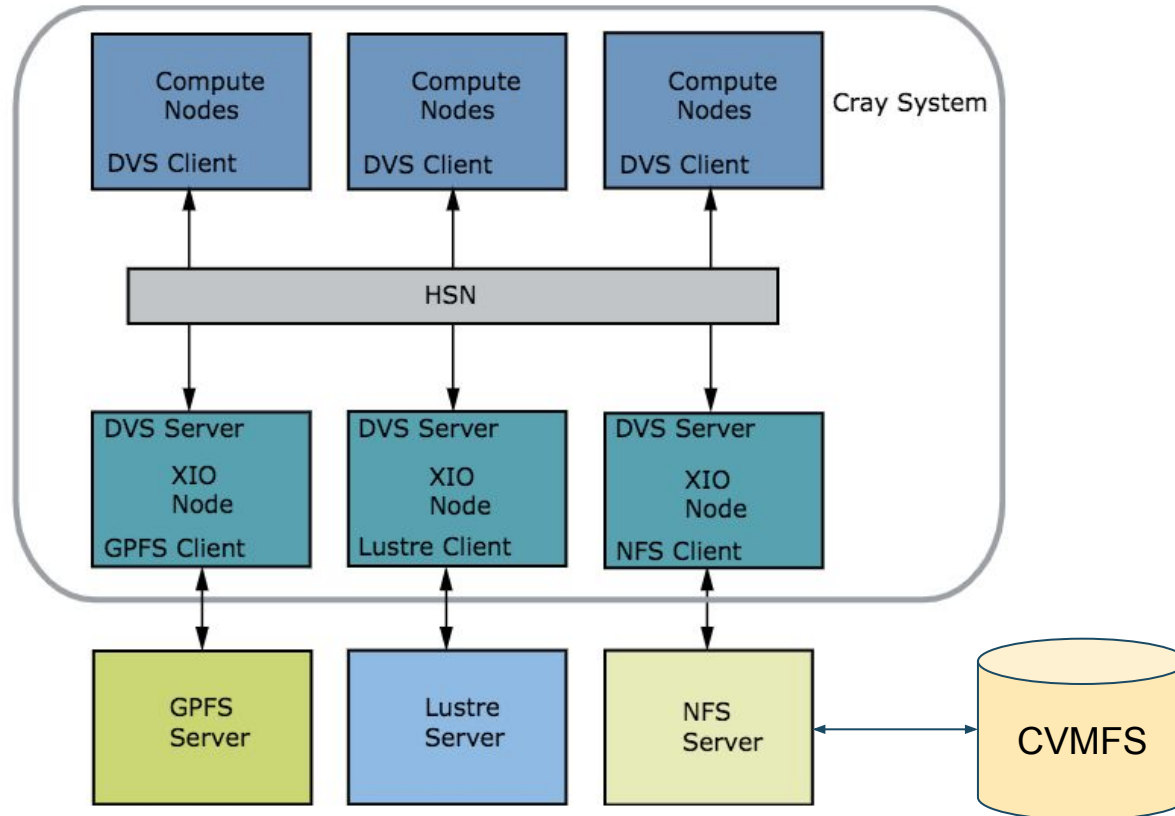
- Serial, high throughput
- Slurm workload manager
- Broad user base
- FairShare scheduling
 - Projects “buy in” to PDSF and the priority is adjusted accordingly
- STAR Tier-1, ALICE Tier-2, ATLAS Tier-3

What happened since last time...



- **PDSF will be turned off by April 2019**
- **Migration to Cori for workloads complete**
 - **50/50 Split of PDSF for ease of migration**
 - **Cray on Commodity**
- **CVMFS on Cori**

CVMFS on Cori via DVS



- **ALICE move to Shifter containers**
- **Edge Services (CVMFS Proxy) moved to SPIN**
- **Edison will be turned off May 13, 2019**
- **PDSF will be shut down in seven days**
 - **Login Nodes will stay online until September**
- **NERSC-9 “Perlmutter”, delivery late 2020**
 - **Converged Data/Simulation System**
 - **Cray Shasta Platform/Slingshot Fabric**
 - **Optimized for Science**



Thank You